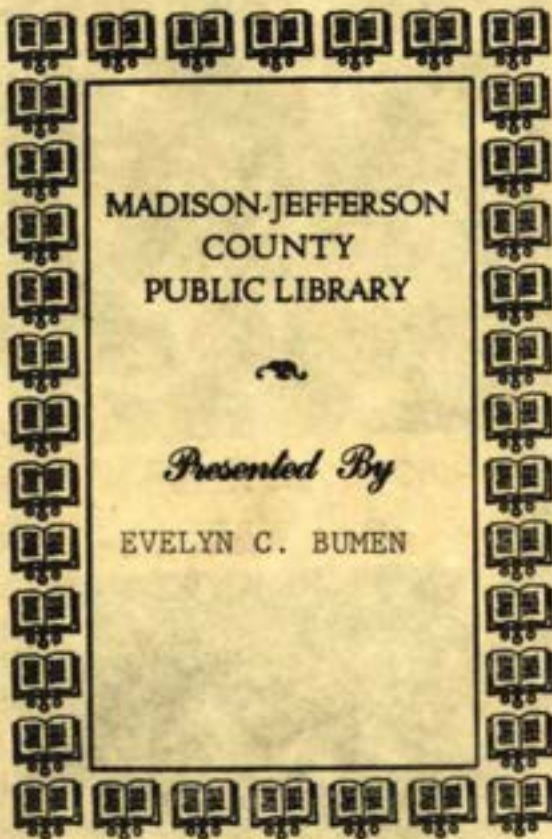




THE REVONAH

1931

IND COL
379.77213
REV

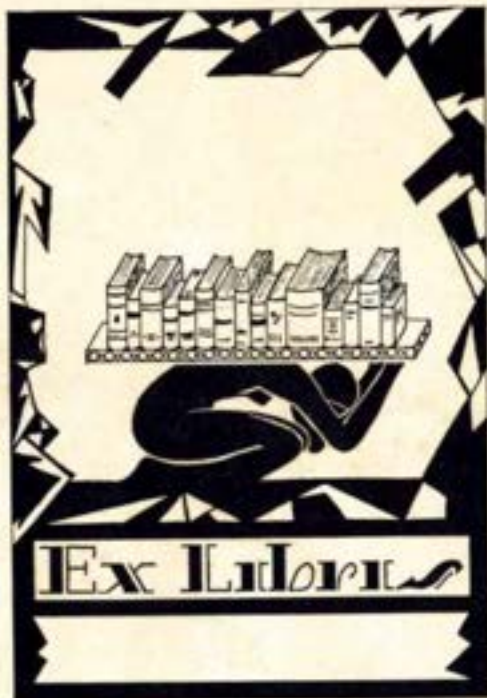


MADISON-JEFFERSON
COUNTY
PUBLIC LIBRARY



Presented By

EVELYN C. BUMEN



The ~ 1931



REVONAH

Published by

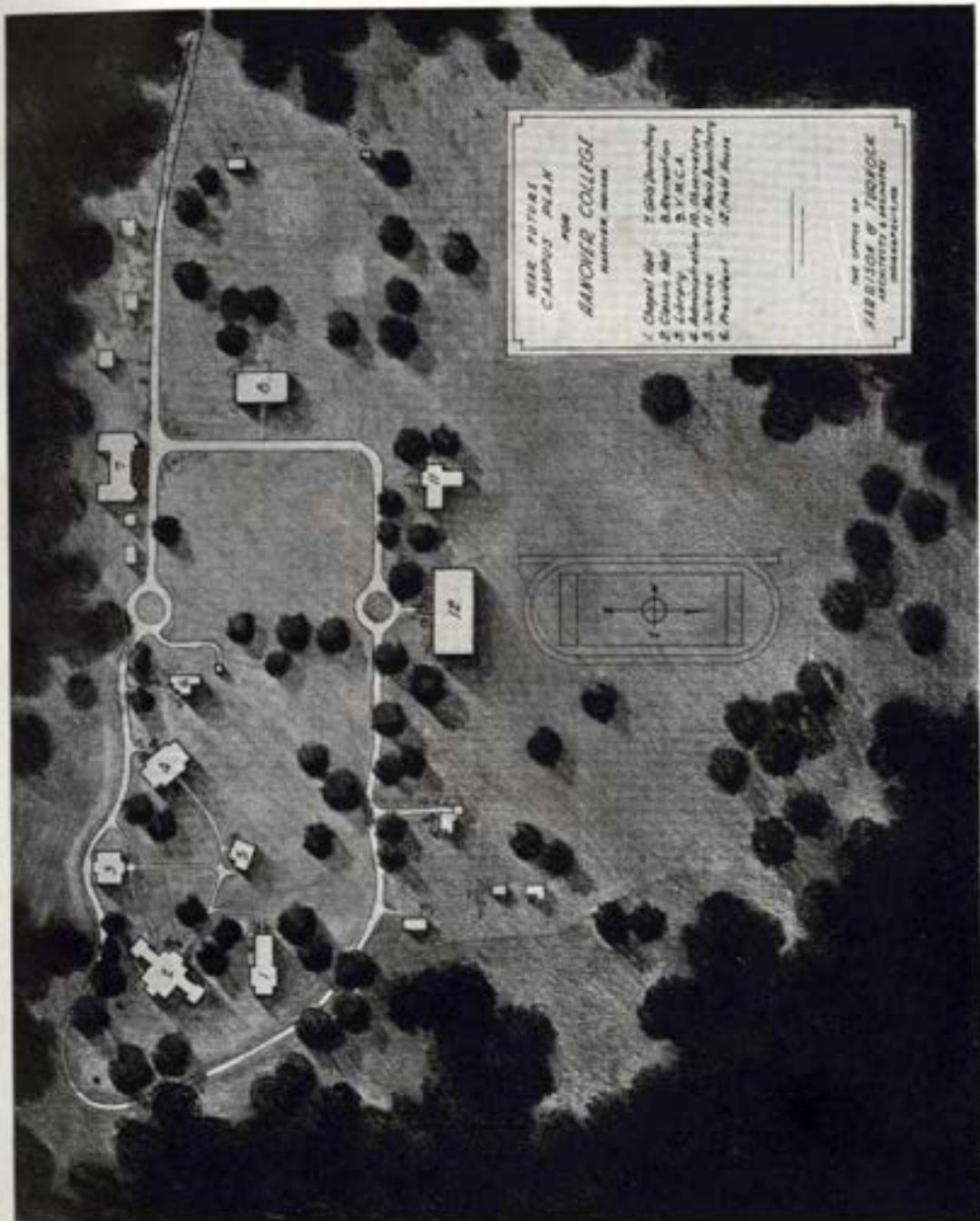
STANLEY ALLISON

Editor

RAY D. STEWART

Business Manager

IND COL
379.77213
REV



**THE FUTURE
CAMPUS PLAN
1931**

HANOVER COLLEGE
NORTHWEST CORNER

1. Chapel Hall	7. Girls' Gymnasium
2. Class. Hall	8. Dispensary
3. Library	9. Y. M. C. A.
4. Administration Bld.	10. Observatory
5. Science	11. Music Building
6. President	12. Hall House

THE OFFICE OF
FRIDSON & TORRICE
ARCHITECTS
INDIANAPOLIS, IND.

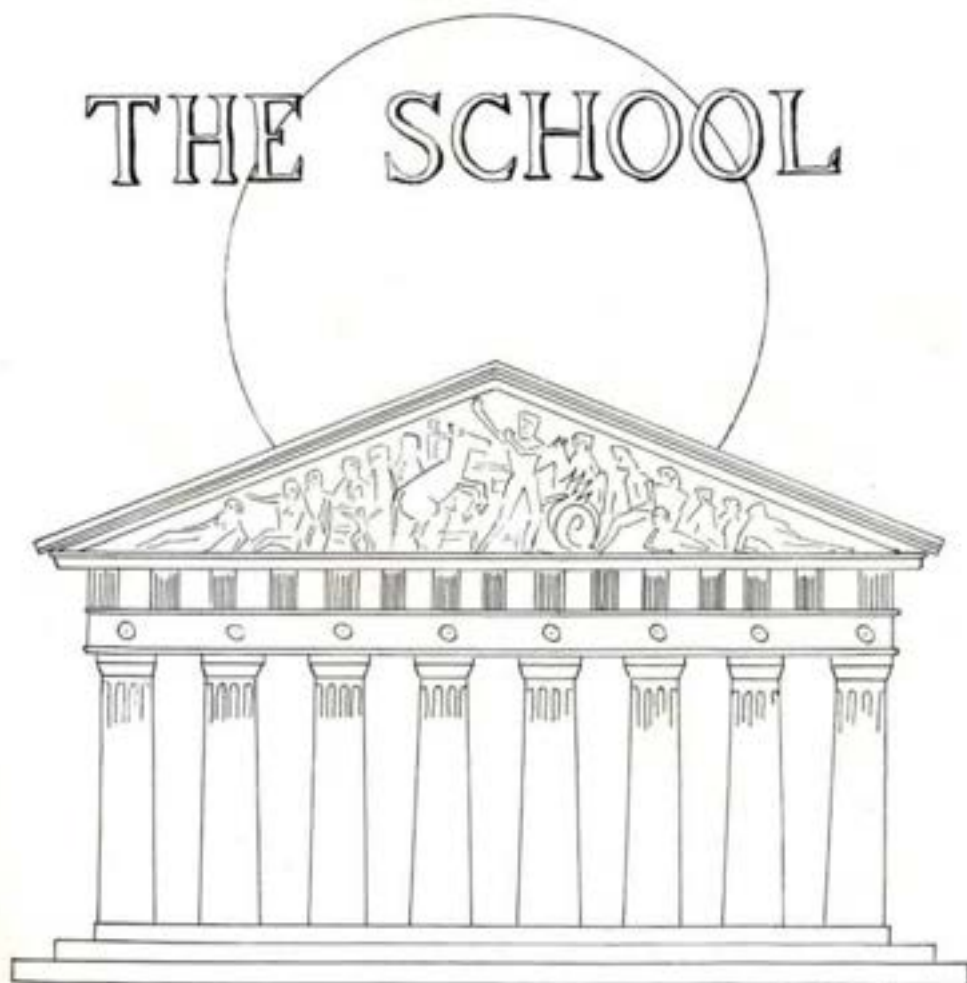
THE HANOVER COLLEGE OF THE FUTURE



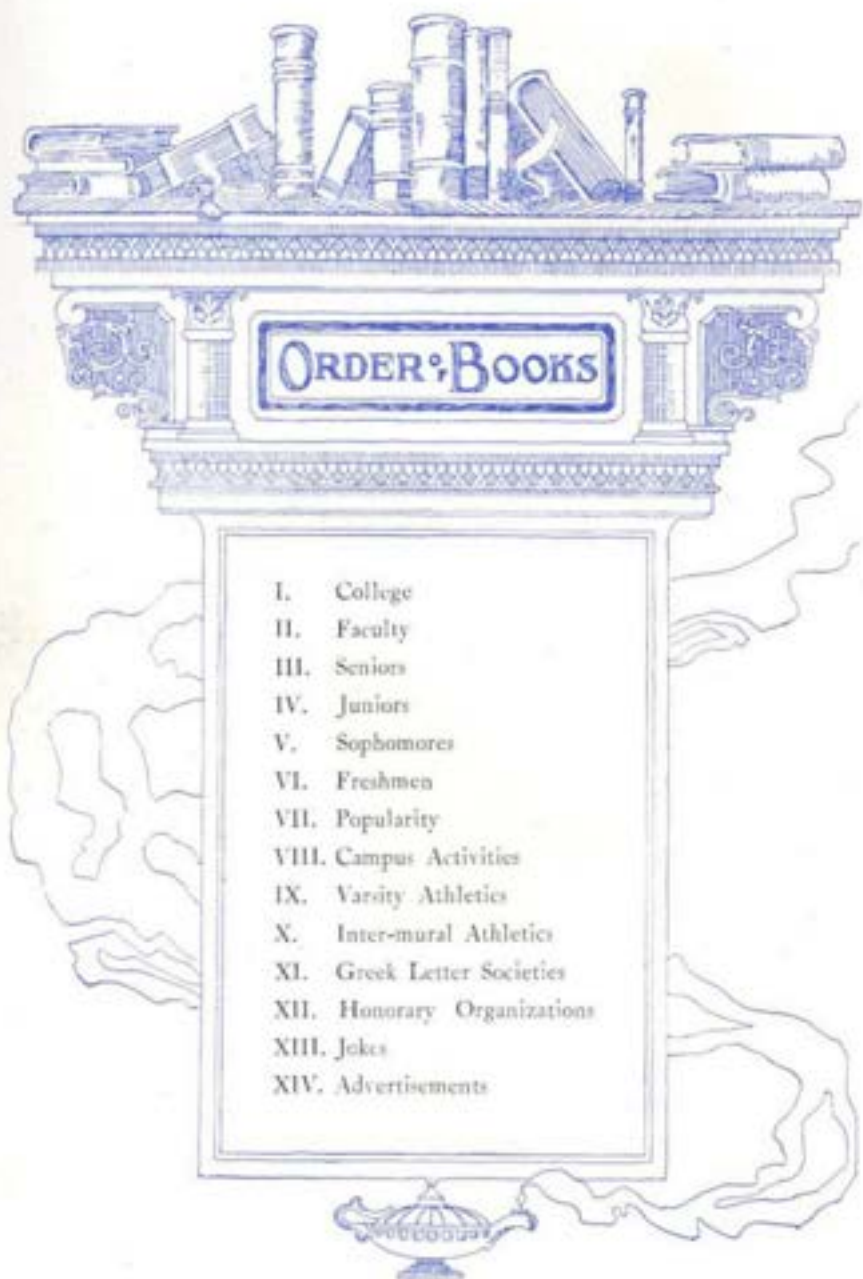
FOREWORD

In future years, may this Revonah recall for you Friendships and Scenes you enjoyed during the year Nineteen hundred and thirty-one.

THE SCHOOL



— THE CITY OF NEW YORK —





ENTRANCE TO CAMPUS



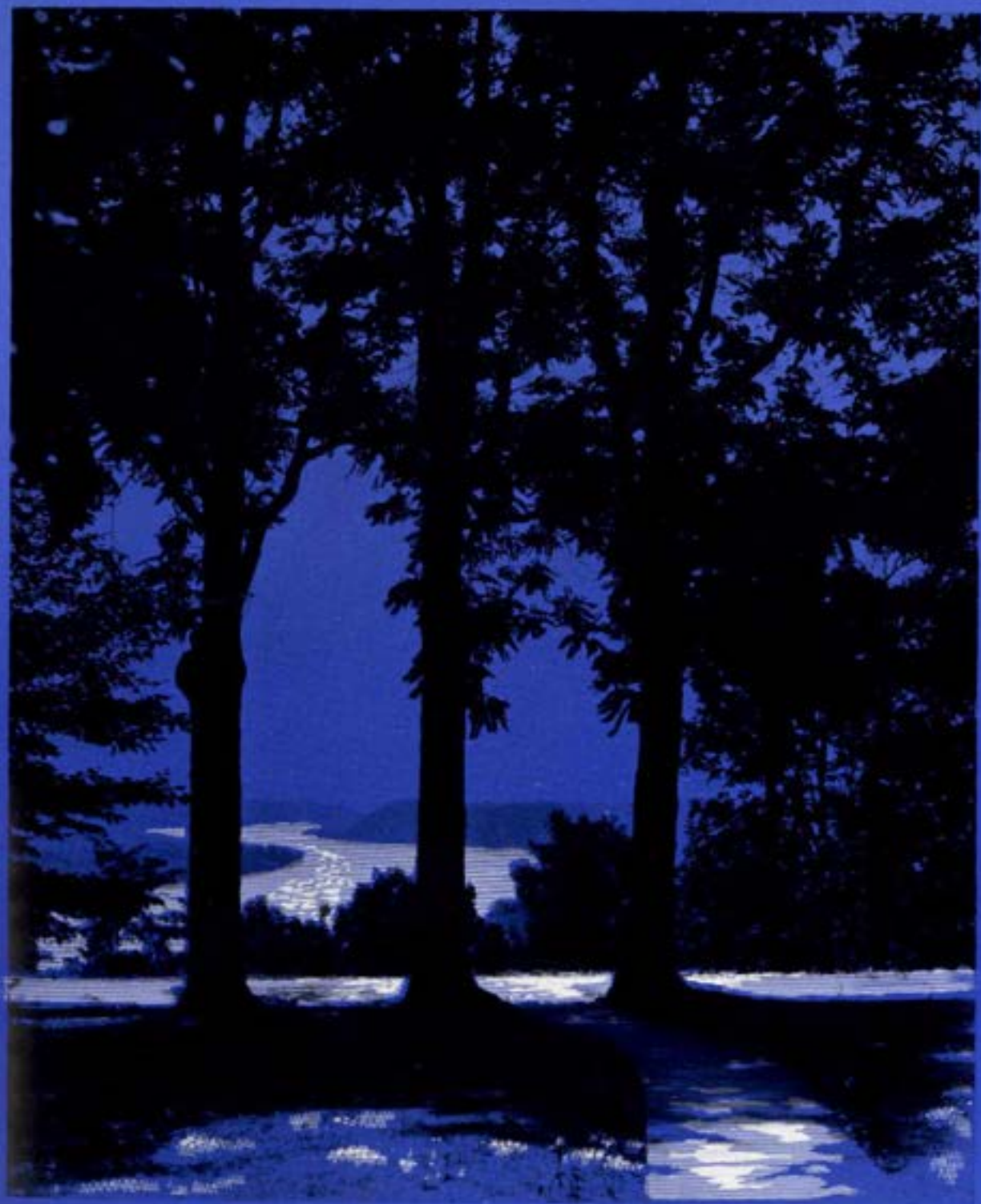
SCIENCE HALL



CLASSIC HALL.



GOLARDEN LODGE



RIVER AS SEEN FROM THE PRESIDENT'S HOME



THE OHIO RIVER AS SEEN FROM CAMPUS





ALBERT GEORGE PARKER, JR.
President

A. B. Park College; B. D. McCormick Theological Seminary; study on a fellowship in Japan and China, 1917-1919; Ph. D. University of Chicago.

HENRY W. BURGER
Secretary-Treasurer

ΦΓΔ

B. S. Hanover College; B. D. McCormick Theological Seminary; A. M. Hanover College; D. D. Hanover College.





ARTHUR H.
WOODWORTH

*Dean and Professor of
Social Science*

A. B. Lafayette College, 1904; A. M. University of Chicago, 1906; Graduate Student of University of Wisconsin, summer 1909; Fellow in Sociology, University of Chicago, 1911-12. Student, college administration, Columbia University, summer, 1930.

HERBERT A. MEYER
Professor of Mathematics

ΣII

B. S. Des Moines University; M. S. University of Iowa; Ph. D. University of Iowa.



KATE ANDREWS

Dean of Women and Assistant Professor of English

A. B. Wellesley College; Graduate work toward Ph. D. at University of Chicago; Columbia University; study in Rome.

RUSSELL M. KUTZ

Professor of Education and Director of Teacher Training

ΦAK

A. B. University of Wisconsin; M. A. University of Wisconsin; Ph. D. University of Wisconsin; Graduate work Teachers' College, Columbia University.



R. EARL MARTIN

Professor of Physics

ΣΞ

A. B. Indiana University; M. S. Lehigh University; Ph. D. Indiana University.

ELIJAH J. JAMES

Professor of History

A. B. Coe College; B. D. McCormick Theological Seminary; M. A. University of Chicago; Ph. D. University of Chicago.





FRANK DIEHL

Professor of Philosophy and Psychology

Ph. B. University of Michigan; Hartford Theological Seminary; Union Theological Seminary B. D.; M. A. Columbia University; M. A. Johns Hopkins University; work on Ph. D.



NED GUTHRIE

Professor of Chemistry

ΦΚΦ, ΣΠ, ΔΕ, ΑΔΑ

B. S. Illinois Wesleyan University; M. S. University of Illinois; Graduate work toward Ph. D. at University of Illinois.



GRANT T. WICKWIRE

Professor of Geology

ΓΑ

Ph. B. Wesleyan University; travel scholarship in the American School of Prehistoric Research, Europe, 1926; M. S. Yale University.

RUSSELL H. FITZGIBBON

Assistant Professor of History

ΦΔΘ, ΑΦΓ

A. B. Hanover College; Ohio State University; University of Chicago; A. M. Indiana University.

MARGARET CURTISS WILSON

*Acting Head Department of English (1930-31)
Assistant Professor*

B. A. in Journalism, University of Wisconsin; M. A. in English Literature, University of Wisconsin.

JOSEPH L. HYATT

Acting Professor of Biology

B. Ed. Illinois State Normal; M. S. University of Illinois; Columbia University.





FRANK O. BALLARD
Professor of English Bible
BØII
 A. B. Ohio University; A. B. University of Wooster; B. D. Princeton Theological Seminary and Union Theological Seminary; D. D. from the University of the City of New York.



MARIE FISHER
Department of Education
 A. B. Ball State Teachers College.



JEAN J. ANDERSON
Professor of Modern Languages
 A. B. Indiana University; A. M. Indiana University; Travel and study in Europe.

MARIE GARTEN
Assistant Professor of Modern Languages
 A. B. Carthage College; A. M. University of Chicago.

CHARLES C. HOWER
Professor of Ancient Languages
 B. A. North Central College, 1927; M. A. University of Illinois, 1928; Instructor, Hendrix College, 1928-29; Assistant in Classics and graduate student, University of Illinois, 1929-30.

W. MAXWELL POLAND
Director of Music
 B. S. Ball State Teachers' College; studied violin at Muncie Conservatory of Music and at the Indiana School of Music and Fine Arts and at the Sherwood School of Music in Chicago.





CLOYD V. MONEY
ΘNE

Director of Physical Education for Men
B. S. Ohio Northern University; work on
M. A. degree University of Michigan, Uni-
versity of Illinois, University of Notre
Dame, Wittenberg College, Indiana Uni-
versity.



VIOLA MITCHELL

Director of Physical Education for Women
A. B. DePauw University; University of
Iowa, 1928, 1929.

MARY LOUISE FITTON

ΑΟΠ. ΦΒΚ
Librarian

A. B. Indiana University; B. S. Columbia
University.



HENRY LEE

Assistant Librarian

A. B. Hanover College.







Senior Class Officers

- PAUL ROCKWELL *President*
NAOMI WHITCOMB *Vice-President*
WILLIAM WALLIN *Treasurer*
FRANCES ALLISON *Secretary*



RALPH ANDERSON

ΦΔΘ

Columbus, O.

Varsity Football 1, 2, 3, 4; Varsity H. 1, 2, 3, 4; President 4; Inter-Fraternity Council 2, 3, 4; Business Mgr. Revonah 3; Y. M. C. A. 2, 3; Inter-Mural Athletics 1, 2, 3, 4; Mgr. 3.

ELLSWORTH BEAR

ΦΔΘ

North Madison

Varsity H. 4; Football Manager 2, 3, 4; Varsity Basketball 2; Inter-Mural Athletics 1, 2, 3, 4.



BETSY BRYANT

ΑΔΠ

El Paso, Tex.

W. A. A. 3, 4; Y. W. C. A. 1, 2, 4; Girls' Athletics 1, 2, 3, 4.

RUSSELL BUTTS

ΘΚΝ

Milan

Inter-Mural Athletics 3, 4; Social Science Club 3, 4.



MARION CARR

ΦΓΔ

Charlestown

Men's Glee Club 3, 4; Central Normal 1, 2; Y. M. C. A. 3; German Club 3, 4.

MARY DEMAREE

ΦΜ

Crawfordsville

Alpha Phi Gamma 2, 3, 4; President 4; Dramatic Club 1, 2, 3, 4; Pan-Hellenic Council 3; Student Government 3; Revonah Staff 3.



MIMREL EWING

Hanover

Gamma Sigma Pi 3, 4; Science Club 3, 4.

HARRY FRANCKE

ΦΔΘ

Henryville

Delta Epsilon 4; Science Club 1, 2, 3, 4; German Club 3; Physics Lab. Asst. 3; Inter-Mural Athletics 1, 2, 3, 4.



IRVIN GATES

Hanover

Y. M. C. A. 4; Fisherman's Club 4; Inter-Mural Athletics 4.

ENID GILTNER

Otto

Social Science Club 2, 3, 4; Y. W. C. A. 1, 2, 3, 4.



WALLACE GREEN

ΘΚΝ

North Madison

Science Club 1, 2, 3; Inter-Mural Athletics 2, 3, 4.

EVERETT HALL

ΒΘΠ

DuPont

Science Club 2, 3, 4; Y. M. C. A. 2, 3, 4; Varsity H. 1; Varsity Track 1; Band 2, 3, 4; Inter-Mural Athletics 2, 3, 4.



RUSSELL HALL

Pekin

Y. M. C. A. 1, 2, 3, 4; Fishermen's Club 4; Social Science Club 2, 3, 4; Science Club 2, 4; Band 2, 4.

ELMER JORDAN

ΑΔΑ

Milan

Social Science Club 2, 3, 4; Inter-Mural Athletics 2, 3, 4; German Club 3, 4.



JAMES T. KELLEY

ΒΘΠ

Eglin, Ill.

Men's Glee Club 4; Triangle Staff 4; Assoc. Editor Triangle (1st Semester); Social Science Club 4.

BUSSEY KY SAR

ΦΔΘ

Commissioner

Varsity Basketball Mgr. 4; Varsity H. 4; Revonah Staff 2; Glee Club 2, 4; Football 2, 3; Social Science Club 2, 4.



WARD MANERS

Hanover

Fishermen's Club 4; Y. M. C. A. 1, 2, 3, 4.

OSCAR NAAB

ΘΚΝ

Markle

Varsity Football 1, 2, 3, 4; Varsity H. 1, 2, 3, 4; Varsity Basketball 1, 2, 3, 4; President Class 2; Varsity Track 1; Most Valuable Player Football Team 4.



PAUL NICELY

ΒΘΠ

Zionsville

De Pauw University 1; Varsity H. 2, 4; Varsity Basketball 2, 4; Editor Triangle 4; Alpha Phi Gamma 2, 4; Y. M. C. A. 2, 3, 4; Inter-Mural Athletics 2, 3, 4; Inter-Fraternity Council, President 4; Varsity Debating 2.

MARTHA PERRY

ΦΜ

Worthville, Ky.

French Club 2, 4; Social Science Club 2, 3, 4; Y. W. C. A. 1, 2, 3, 4.

JOSEPH PETERS

ΔΔΑ

Hanover

Biology Lab. Asst. 4; Fishermen's Club 4; Y. M. C. A. 3, 4; Inter-Mural Athletics 3, 4.



WALTER REED

ΦΓΔ

Indianapolis

Dramatic Club 1, 2, 3, 4; President 3; Glee Club 1, 2, 3, 4; Chapel Choir 1, 2, 3; Inter-Fraternity Council 2, 3, 4; Alpha Psi Gamma 2, 3, 4; Varsity Tennis 2, 3, 4.



GENEVA RISK

Greensburg

Student Government 2, 3, 4; W. A. A. 1, 2, 3, 4; Women's Athletics 1, 2, 3, 4; Delta Epsilon 4; Revonah Staff 3; Y. W. C. A. 2, 3, 4.



GLADYS RISK

Madison

W. A. A. 2, 3, 4; Glee Club 3, 4; Student Council 3; Science Club 3; Y. W. C. A. 1.

IVAN ROGERS

Scottsburg

Gamma Sigma Pi 4; Delta Epsilon 4; Inter-Mural Athletics 2, 3, 4; Social Science Club 3, 4.



ARNOLD RYKER

Madison

Dramatic Club 3, 4; Gamma Sigma Pi 2, 3, 4; Science Club 2, 3, 4; Inter-Mural Athletics 1, 2, 3, 4.

IRVING SCHILLING

Madison

Physical Education Assistant 4.



LEONA SNYDER

ΔΔΠ

Hanover

Gamma Sigma Pi 3, 4; Revonah Staff 3; Delta Epsilon 4; Science Club 4; Class Secretary 2.

DOROTHY STEPHAN

Madison

Gamma Sigma Pi 2, 3, 4; Science Club 2, 3, 4; Delta Epsilon 4; Student Council 3, 4.

RAYMOND STEPHAN

Madison

Inter-Mural Athletics 1, 2, 3, 4; Science Club 2, 3, 4; Social Science Club 3; Band 4.



GERALD WHITSITT

ΘΚΝ
Austin

Varsity Football Manager 1, 2, 3, 4; Inter-Mural Athletics 1, 2, 3, 4; Inter-Fraternity Council 2, 3, 4; Secretary 4.



RUTH WINTERS

ΦΜ
Pittsburg, Pa.

Maryville College 1; W. A. A. 2, 3, 4; German Club 3, 4; Accompanying Pianist, Glee Club and Chapel Choir 2, 3, 4; Y. W. C. A. 2, 3, 4; Revonah Staff 3; Student Government 2, 3, 4; President 3.



JEROME WOOD

ΦΓΔ
Charlestown

Indiana 1; Inter-Mural Athletics 2, 3, 4; Manager Varsity Tennis 4; Dramatic Club 2, 3, 4; French Club 3, 4.



JUNIORS





Junior Class Officers

JOHN TAGGART	<i>President</i>
CLARA FERREE	<i>Vice President</i>
RAY MANAGHI	<i>Secretary</i>
RUTH MATHEWS	<i>Treasurer</i>

BETTY ALLEN
 ΑΔΠ
 Evanston, Ill.
 Y. W. C. A. 1, 2, 3.

STANLEY ALLISON
 ΦΓΔ
 Gardiner, Ill.
 Editor 1931 Revonah; Alpha Phi
 Gamma 3.

PAUL BARBOUR
 ΦΔΘ
 Rising Sun
 Inter-mural Athletics 1, 2, 3; Var-
 sity Basketball 1.

BRUCE BEHMER
 ΦΔΘ
 Columbus, O.
 Varsity Football 2, 3; Varsity B. 2,
 3; Varsity Basketball 2; Inter-mu-
 ral Athletics 2, 3.

HAZEL BOYD
 Dupont
 W. A. A. 2, 3; Girls Athletics 1, 2, 3.

WALTER BRIGHT
 Madison
 Junior Basketball Mgr. 3; Men's
 Glee Club 3; Inter-Mural Athletics
 1, 2, 3.

MARGARET CASEY
 Austin
 DePaul University 1.

IRMA DEAN
 ΑΔΠ
 Hanover
 Pan-Hellenic Council 3; Revonah
 Staff 3; Women's Glee Club 2, 3;
 Orchestra 2, 3.

MILDRED DUGAN
 ΦΜ
 Warsaw, Ky.
 W. A. A. 1, 2, 3; Girls' Athletics
 1, 2, 3.

WELLS FISH
 ΒΘΠ
 Paris Cross'ng
 Football Mgr. 1, 2, 3; Inter-Mural
 Athletics 1, 2, 3; Men's Glee Club,
 1, 2, 3; Triangle Staff 2.

LESLIE FOX
 ΘΚΝ
 Indianapolis
 Bus. Mgr. Triangle 3; Inter-Mural
 Athletics 1, 2, 3.

MAURICE HARDY
 Lexington

ROBERT KELSEY
 ΒΘΠ
 Rising Sun
 Indiana Central 1, 2; Associate Edi-
 tor Triangle 3; Men's Glee Club 3;
 Y. M. C. A. 3; Fishermen's Club 3.

WAYNE KEMPSHALL
 ΦΓΔ
 Gardiner, Ill.
 Band 1, 2, 3; Inter-Fraternity Coun-
 cil 3; Revonah Staff 3; Inter-Mural
 Athletics 1, 2, 3.



DANIEL LEWIS

ΦΔΘ

LaPorte

Pres. Y. M. C. A. 3; Varsity Football 2, 3; Varsity H. 3; Inter-Mural Athletics 2, 3; Debating Team 2, 3.

JOHN M. LEWIS

ΒΘΠ

Washington, D. C.

Cheer Leader 1, 2, 3; Varsity H. 3; Editor Triangle 2; Associate Editor 1; Dramatic Club 2, 3; Varsity Debating 2; Inter-Mural Athletics 1, 2, 3; Inter-Fraternity Council 3.

ELIZABETH MANZ

Athens, O.

ADELBERT MILLICAN

ΘΚΝ

Hanover

Varsity Football 1, 3; Varsity H. 3; Inter-Mural Athletics.

GRACE SIES

Crawfordsville

Gamma Sigma Pi 2, 3.

MARGARET RICKETTS

Rising Sun

W. A. A. 1, 2, 3; Girls' Basketball, Soccer, Volleyball 1, 2, 3; Y. W. C. A.

RAY STAPLES

ΘΚΝ

Henryville

Varsity Football 3; Varsity H. 3; Inter-Fraternity Council 3; Inter-Mural Athletics.

RAY STEWART

ΒΘΠ

Salem

Bus. Mgr. 1931 Revonah; Y. M. C. A. 1, 2, 3; Treasurer German Club 3; Alpha Phi Gamma 3; Science Club 1, 2, 3; Men's Glee Club 3; Inter-Mural Athletics 1, 2, 3.

GENE STONECIPHER

ΒΘΠ

Hagerstown

Men's Glee Club 2, 3; Triangle Staff 2; Revonah Staff 2.

CLARE TALLMAN

ΒΘΠ

St. Paul, Minn.

Student Council 2, 3; President 3; Inter-Fraternity Council, President 3; Men's Glee Club 1, 2, 3; Chapel Choir 2, 3; Dramatic Club 3; Revonah Staff 3; Varsity Football 2; Triangle Staff 1, 2; Inter-Mural Manager 3; Alpha Phi Gamma.

CHARLES THAYER

ΦΔΘ

Chicago, Ill.

Varsity Football 3; Dramatic Club 3; French Club 3.

MARY ELLA WEBER

Brooksbury

Triangle Staff 2; Revonah 3; W. A. A. 1, 2, 3; Girls' Athletics 1, 2, 3; Dramatic Club 2, 3; Y. W. C. A. 1, 2, 3.

MAE WILSON

Lexington

W. A. A. 1, 2, 3; Girls' Athletics 1, 2, 3; Revonah Staff 3.





SOPHOMORE



Sophomore Class Officers

DANA SHELBY *President*
 MABEL RANEY *Vice President*
 VIRGINIA DIDLER *Secretary*
 CHARLES BUTLER *Treasurer*

LEWIS ALLEN
GLENN ARBUCKLE
DOROTHY ARCHIBOLD
FORREST BEMISH



NELSON BOICOURT
LOUIS BOLES
MILDRED BONSETT
FRITZ CHAPMAN



ADAM CHRISTMAN
GEORGE CONWAY
ROBERT COOPER
VITAL CORTIPASSI



VIRGINIA CORYA
CAROLYN DODD
JIMMY DORRELL
DOLLY DRAKE



FARWELL ELLIS
CLARICE ELSTON
EVANGELINE FARRELL
STELLA FIRTH



ELDEAN GARDNER
GLADYS GELVIN
VIRGINIA GIFFORD





MAURICE GRASTON
 JAMES GREEN
 VERA GREEN
 ALLENE GROSS



DALE GUYER
 CARLYLE HALL
 MYRTLE HAWES
 KENNETH HILL



HOWARD HILLIS
 JOHN HOESSLE
 MARTHA HOSTETLER
 FLORENCE JACKSON



LEWIS JACOB
 WILLIAM JOYCE
 JOSEPH JUDKINS
 ROBERT KELLAR



ROBERT KUNKLER
 MAXINE LANE
 MAHLON LEMEN
 JEAN LEWIS



RUTH LOYD
 LELAND LURTON

MARY McCURDY
 DANIEL McNULTY
 OTTO MEASE
 DOROTHY MILES



GEORGE MILLICAN
 ROBERT MONEYHON
 GRACE NIXON
 ELEANOR PICKHARDT



ALBERT PLATT
 HAROLD RAIDT
 EMILY REA
 KENNETH RATTS



FRANK RAZAVICH
 BERNARD RYNEARSON
 JEAN SHEPHARD
 HELEN SMITH



MARGARET SMITH
 WILLIAM SMYTHE
 HENRIETTA TREON
 LUCILLE TURNER



HARRY WEIR
 WILLIAM WILLIS
 RUTH WILSON
 LEAFA YOUNG



FRESHMEN





Freshman Class Officers

DAVID SPANN *President*
MARJORIE NIGHBERT *Vice President*
NEIL DRAKE *Treasurer*
ALLYEEN HOWELL *Secretary*

CLIFFORD ADAMS
 HOWARD BANTA
 LOUELLA BLACK
 CHARLES BRAUN



FLORENCE BRIGHT
 DONALD CAMERON
 CORDIA CHAMBERS
 MARY LOU CLARK



MILDRED CLEETER
 HILBERT COLFIELD
 ROBERT COLKER
 CATHERINE COMPTON



MARY ELLEN COOPER
 FORREST COUCH
 ESTHER CRONE
 HAROLD DEMAREE



KEITH EADES
 LAWRENCE EVANS
 WILLIAM FAULDS
 DALE FERRIS



WOODROW FLEMING
 GRACE FLINT
 JOHN FOSTER
 FRANCIS FRANCKE



MARGARET GALBREATH
 EDWARD GANSERT
 EVELYN GARDNER
 MARGARET GIBBONEY



LOUISE GILLISPIE
 EVELYN GOODSON





JOHN GWIN
 LAWRENCE HAINES
 ALMON HARMON
 ALYEEN HENDERSON

SARAH HENNING
 IKE HERZER
 MAURICE HORTON
 ROY JACKSON

MARY FRANCIS KENNEDY
 VERA KENNEDY
 WILMA KITCHEN
 CARRIE LEATHERBURY

MARGARET LEE
 HOWARD LEE
 PAULINE LEMEN
 VIRGINIA LEMEN

HAZEL LLOYD
 MAXINE LOCKRIDGE
 ELLER LUTES
 WENDELL McCLAIN

MILDRED McKIM
 AVIS MAGGARD
 HAROLD MALONE
 KEITH MALSBARV

LOREN MARTIN
 MAUDE MARK
 JOSEPH MAZIEKAS
 FRANK MENOZI

ROBERT MILLICAN
 MARY ALICE OWINGS

MARIAN PARKER
EARL POMMEREHN
BEATRICE PRALL
HORACE RANSDELL



LILLIAN RAPER
MARGARET REA
ROBERT REED
GENE REYNOLDS



VENIDA RODGERS
MILDRED ROMMERILL
VIOLA RUEFF
MARGARET RYMAN



MARY SCHNELL
EDWARD SMITH
JAMES SNYDER
CLAUDE STEWART



HOWARD STAUFFER
MARGARET TATLOCK
WILLIAM ULBRICH
LORRAINE WEALES



MARGE WEAVER
ROSE WELTY
BETTY WILLEY
LENA WILLIS



GERTRUDE WILSON
JAMES WILSON
CONRAD YOUNG
NADINE YOUNG





MOST
POPULAR
PERSONAGES





FRANCES ALLISON



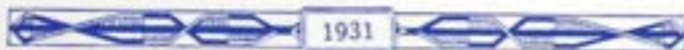
ALVEEN HENDERSON

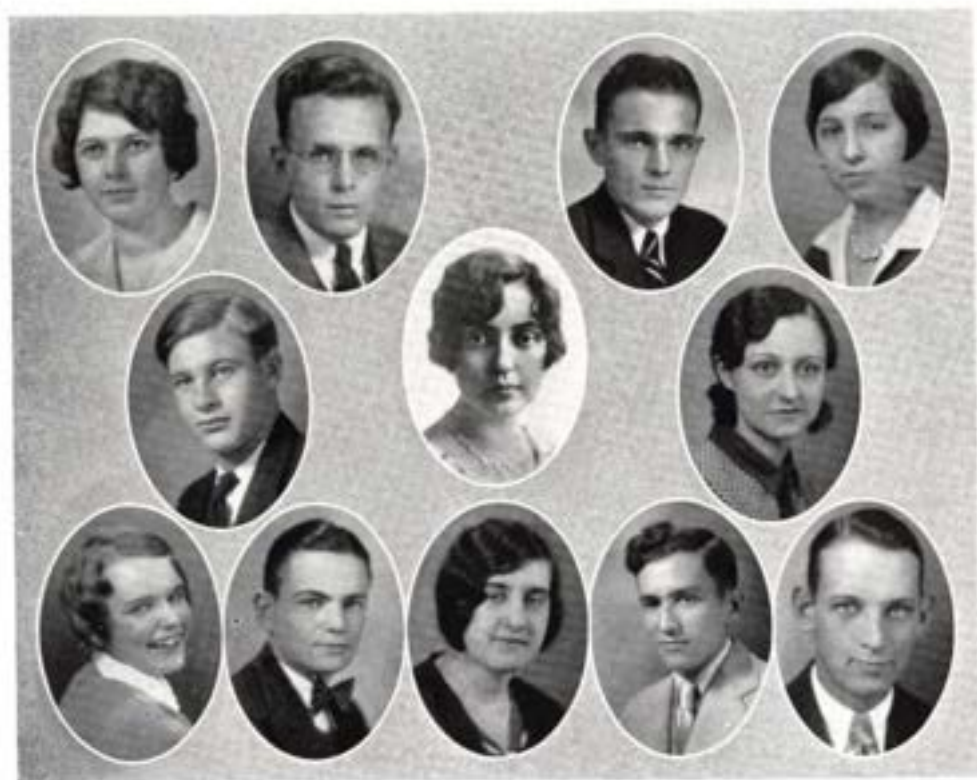


"BUD" FISH



GENE REYNOLDS





Staff of 1931 Revonah

STANLEY ALLISON	<i>Editor-in-Chief</i>
RAY STEWART	<i>Business Manager</i>
IRMA DEAN	<i>Associate Editor</i>
RAY MANAUGH	<i>Advertising Editor</i>
JOHN TAGGART	<i>Athletic Editor</i>
MARGARET RICKETTS	<i>Womens Athletic Editor</i>
GRACE SIES	<i>Calendar Editor</i>
LESLIE FOX	<i>Men's Organization Editor</i>
MAE WILSON	<i>Women's Organization Editor</i>
CLARE TALLMAN	<i>Snapshot Editor</i>
MARY ELLA WEBER	<i>Snapshot Editor</i>
WAYNE KEMPSHALL	<i>Joke Editor</i>



Triangle Staff

PAUL NICELY	<i>Editor</i>
LESLIE FOX	<i>Business Manager</i>
JAMES KELLEY	<i>Associate Editor</i>
ROBERT KELSEY	<i>Associate Editor</i>
CHARLES BUTLER	<i>News Editor</i>
LOREN MARTIN	<i>Social Editor</i>
LAWRENCE EVANS	<i>Men's Sport Editor</i>
MARGARET RICKETTS	<i>Woman's Sport Editor</i>
GERALD WHITSITT }	<i>Columnists</i>
ROBERT COLKER }	
JOHN M. LEWIS	<i>Special Writer</i>
DANA SHELBY }	<i>Circulation Department</i>
RAY MANAUGH }	
PROF. FITZGIBBON	<i>Faculty Advisor</i>

The Triangle is the student publication offered each week by the staff. It is the official organ of the student body, and acts as a recorder of general campus activities. It affords an excellent opportunity for practical journalistic training. Membership on the staff is judged by a competitive try-out.



Dramatic Club

RUTH MATHEWS	<i>President</i>
VIRGINIA DIBLER	<i>Secretary</i>
DANIEL LEWIS	<i>Business Manager</i>
JOHN M. LEWIS }	<i>Stage Managers</i>
CLARE TALLMAN }	

The Dramatic Club is the organization which presents each year for the entertainment of the student body two large plays, one each semester, and several one-act plays the first semester, offered by the freshman members. Membership is restricted to thirty and new candidates must pass a competitive try-out. "Laugh That Off" was the first semester presentation starring Ruth Mathews and Dan Lewis, being a farce of the modern generation, and the second semester, "The Dover Road", Miss Andrews and Miss Wilson are faculty advisors.



TOP ROW—Albert Platt, Ivan Rogers, Fritz Chapman, Charles Butler, Clare Tallman, Dan Lewis, Mahlon Lemen, Lewis Willis.

BOTTOM ROW—Geneva Risk, Dorothy Stebbins, Hazel Boyd, Ruth Winters, Grace Nixon, Jerry Wood, Dana Shelby.

Student Council

The Student Council is comparatively a new organization on the campus, having been formally inaugurated last year. Its purpose is not only being to regulate student conduct, etc., both individually and as to organizations, but to act as the official medium between the faculty and the student body. In addition it sponsors and directs the All-College Boat Ride each spring and the diversions offered on the official holidays. Clare Tallman is president.



Men's Glee Club

The personnel of the club is as follows:

PROF. MAX POLAND *Director*

First Tenor

Kysar
Ransdell
Carr

Second Tenor

Guyer
Stonecipher
Fish
Cameron
Bright
Rynewarson
Shelby
Reynolds
Kelley
Stewart

Boritone

Malsbury
Foster
Joyce
Kelsey
Parker
Kempshall
Lutz
Ellis
Chapman

Base

Tallman
Reed
Graston
Taggart
Cofield
Raidt

CHARLES BUTLER *Pianist*

The club gave several concerts around in different places this year. They often furnish music for the chapel program and render their programs for any special occasion which the college may have. The club was heard over the Radio from station WHAS this year. An extensive trip is planned by the director for the boys next year.



Women's Glee Club

Jean Shephard is president and the club is under the direction of Professor Max Poland.

The Women's Glee Club is composed of about thirty selected voices. Tryouts were held at the first of school. During the year they gave several concerts in chapel and in Madison. A trip to Louisville to broadcast over WHAS is planned.

OFFICERS

JEAN SHEPHERD	<i>President</i>
GLADYS RISK	<i>Secretary-Treasurer</i>
IRMA DEAN	<i>Business Manager</i>



FRONT ROW—Ruth Winters, Clara Ferris, Virginia Coyne, Eleanor Pickhardt, Irma Dean, Lorena Beyman, Naomi Whitcomb.

BACK ROW—Max Poland, Director, Bessy Kysar, Horace Bassell, Eleanor Heberbrand, Jean Shepherd, Eldon Gardner, Walter Reed, Charles Butler, Clare Tallman.

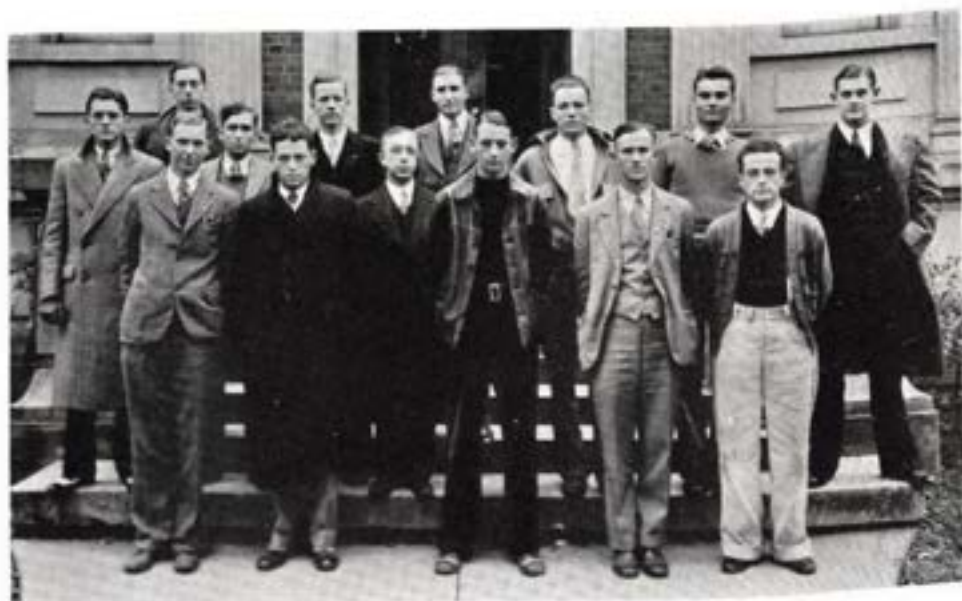
Chapel Choir

The Chapel Choir is one organization that does its part toward the building of a better Hanover College. The Choir is chosen from the best material in the Glee Clubs. Several trips have been made to various churches in Indiana this year. This organization also aids in the production of good chapel programs.



The Orchestra

The College Orchestra was organized last year under the direction of Professor Poland. This organization has developed into one of the most interesting activities in the school. The orchestra, besides playing in chapel, furnishes music for several outside activities. Lemen, Cornell, Raidt, and Joyce, a quartet from those who play trumpets, have furnished music for several occasions this year. The quartet was also heard over the Radio from station WHAS.



TOP ROW—Robert Kelsey, Charles Butler, Leslie Fox, Woodrow Fleming, Elmer Lutes, Albert Platt, Loren Martin, Lewis Jacob.

BOTTOM ROW—Maurice Graston, Dan Lewis, Dr. Martin, faculty adviser, Clare Tallman, Dale Ferris, Paul Nisely.

Y. M. C. A.

The local Y. M. C. A. has the distinction of being the first college organization of its type in the world, having been founded in 1883. Its purpose is to stimulate interest in church work. The "Y" holds joint meetings with the Y. W. C. A. each Sunday evening for devotional services, and meets every Wednesday evening for discussion of campus and world problems. Dan Lewis is president and Dr. Martin is faculty advisor. Membership is open to all students.



Y. W. C. A.

Since its founding in 1885 the Y. W. C. A. has been prominent in promoting worthwhile affairs on the campus. In the fall a reception for the freshmen was sponsored, and during the year get together parties were held. As one of the main features of the organization's work the Y. W. has sole charge of putting on the annual May Day Festival. The past year the Y. M. and Y. W. redecorated the Y. building. Meetings were held each Sunday evening. Membership is open to any woman student of the college.

OFFICERS

FRANCES ALLISON	<i>President</i>
RUTH MATHEWS	<i>Vice President</i>
IRMA DEAN	<i>Secretary</i>
HAZEL BOYD	<i>Treasurer</i>



Social Science Club

The Social Science Club is open to all students interested in social science studies. It meets every fortnight having discussions for the benefits of its members on economic and social problems. Elinor Pickhardt is president and Prof. Woodworth is faculty advisor and sponsor for the organization.



Science Club

HAZEL BOYD	<i>President</i>
MAURICE GRASTON	<i>Vice-President</i>
ARNOLD RYKER	<i>Secretary-Treasurer</i>
DR. MARTIN	}
PROF. HYATT	
PROF. WICKWIRE	
PROF. GUTHRIE	
DR. MEYER	
	<i>Faculty Advisors</i>

The Science Club is for students interested in science and scientific subjects not generally discussed in the college classes. Membership is open to all majoring in the science or mathematics departments. This year astronomy has been stressed proving not only to be quite interesting but very intellectual to all of the members.



Die Deutsche Gesellschaft

OFFICERS

HERR BROWNE	<i>President</i>
HERR RAIDT	<i>Vice-President</i>
FRAULEIN GIBBONEY	<i>Secretary</i>
HERR STEWART	<i>Treasurer</i>
FRAULEIN GARTEN	<i>Faculty Advisor</i>

The German Club is open to all students making a B average in this language. To get a more practical education of the tongue the members of the club have been corresponding with students in Germany. In addition it presents chapel programs and plays. Its purpose is to stimulate interest and to offer a broader education in the German language.



TOP ROW—Carlyle Hall, Dale Gayer, Farwell Ellis, Daniel McNulty, Charles Butler, Joseph Peters,
 BOTTOM ROW—Dillon Dorell, Dorothy Archbold, Senorita Garten, Instructor, Dorothy Miles, Dana Shelby.

Spanish Club

The Spanish Club is one of the few modern language clubs recently installed on the Hanover campus, with the aims of not only encouraging constructive interest in the Spanish language but to offer students a further education. Membership is elective with a requirement of a B average in the language. Each year it offers a program in chapel and various Spanish plays. Senorita Garten is faculty advisor and Dana Shelby is president.



French Club

The French Club is open to students majoring in that department. Its purpose is not only to stimulate interest in this modern language, but to offer its members a more thorough study. It meets every two weeks, and like its sister organization, the Spanish Club, presents numerous plays and programs both in chapel and in their meetings. Martha Perry is president and Miss Anderson faculty advisor.



TOP ROW—Robert Kelsey, Loren Martin, Howard Lee, Russell Hall.
 BOTTOM ROW—Ward Manners, Dale Ferris, Irvin Gates, Joseph Peters.

Fishermen's Club

The Fishermen's Club is an organization similar to the Y. M. C. A., only stressing even further devotional services. It holds meetings each week. It takes the place of the former Gospel Team, by holding services in the surrounding churches occasionally, thereby offering its members experience in ministerial work. Membership is open to all.





COACH C. V. MONEY
Head Coach



Varsity H Club

This is the fourth year of existence of the Varsity H. Club on the Hanover Campus. All those who have earned a major letter in any sport are eligible for membership. The club sponsored a dance the second semester. The Varsity H. Club is always behind anything that is for the good of the College.



Horace Ransdell

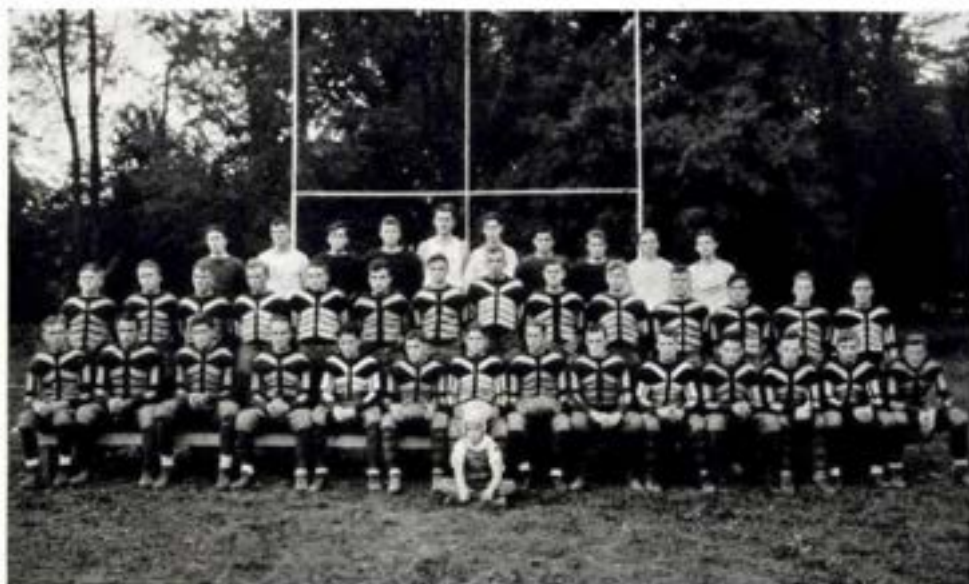
John M. Lewis

Bill Faulds

Cheer Leaders

The cheer leaders are chosen by a system of tryouts. Those who show the most ability are elected. A good cheer section plays a big part toward winning a hard game. These three boys have done their parts in great style and deserve credit for their work. A varsity sweater was given Lewis this year for his work.

The Panthers



FRONT ROW—Nabb, Gansert, Gwin, Millican, Lewis, Guyer, Anderson, Rockwell, Hills, Staples, Man-
augh, McNulty, Smith, Wallin.

MIDDLE ROW—Sorrell, Thayer, Mesikow, Hill, Haines, Meese, Hoende, Spann, Jacobs, Taggart, Cruch,
Winney, Shelly, Behmer.

BACK ROW—Whitsitt, Ranavich, Fox, Stouffur, Coach C. V. Money, Cameron, Menzel, Fracke, Fish,
Ellis.



The Panthers

C. V., the Coach, worked under a great handicap this year. The mainstays of last years line and several of the backfield men were not in school this year. Starting the season with only five veterans, Rockwell at center, Wallin and Nabb, ends; Taggart, guard; and Captain Anderson at quarterback, C. V. soon developed Hillis for the other guard, Millican and Lewis, tackles, Gansert and Meese, halfbacks, and Haines for the fullback job. Joe Mazickas, a Freshman, also saw action in the backfield. With Razavich eligible next year and several other good prospects for varsity material, the Panthers should have one of the strongest teams of any of the smaller colleges next year.



**C. V. MONEY***Coach*

This year was C. V.'s fourth year at Hanover. The Freshmen that C. V. started with four years ago, graduate this year. The sportsmanship and all around ability that these boys displayed, illustrate the superior moral character and teachings of our Coach.

FRANK RAZAVICH

Frank was ineligible this year but coached one of the best second teams that Hanover has had in several years. We expect Frank to be a great assistance in Varsity competition next year.

RALPH ANDERSON*Captain and Quarter Back*

Clown was very small in stature but was very smart in his open field running. Clown also displayed good ability in calling signals this year and we feel that his position will be hard to fill next year.

RAY MANAUGH*Tackle*

Ray came into his own this year after two seasons hard work. With a grim determination behind a solid physique, Ray proved to be a tower of strength in the line this year. Ray is a Junior this year.

RAY STAPLES*Guard*

Although this was Demons first year on the Squad, he played his position in fine style. Ray should develop into a real star next year.

WILLIAM WALLIN

End

During Swede's Sophomore year he decided to come out and give the boys a break. Since that time his work at end has made him one of the outstanding players on the team. Swede graduates this year.

PAUL ROCKWELL

Center

This was Rocky's fourth year of real football for the Panthers. His accurate passes, efficient blocking, and good tackles, made him a very valuable man to the team. We lose another good player through his graduation this year.

JOHN TAGGART

Fullback

Taggart started the season at tackle but was shifted to the backfield after a few games. His long suits were blocking, tackling, and backing up the line. John is a Junior.

DELBERT MILLICAN

Guard and Tackle

Del, another Junior, played his first year season on the varsity in fine style. His hard charging and tackling upset the plans of many of our opponents this year. Del has one more season for varsity football.

BRUCE BEHMER

Halfback

Bruce was the smallest man on the team and is another proof for the statement "That good things can come in small bundles." Bruce was always a fast and elusive runner and a good pass receiver. This was his second year on the team.



EDWARD SMITH

End

Eddie was a utility end and was used in most of the games. Ed is only a Freshman. He should develop into an allstate end by the time he is a Senior.

EDWARD GANSERT

Tackle

Ed, the largest man on the team, was a tower of strength on the forward wall. Ed was very fast and therefore was a very good man. He will not be back next year.

JOHN GWIN

Tackle

John is a big boy and can play a big game. He is only a Freshman and with three more years of experience should be one of the best players that Hanover has ever turned out.

ELMER MEESE

Halfback

Otto, a Sophomore, played his first year at half. His passing and running kept the opponents guessing all of the game. He could always make a few yards when they were most needed.

JOE MAZIEKAS

Quarter and Halfback

Joe was another Freshman who made the Varsity. His short compact body and his speed enabled him to gain yards through the opponent's line and to skillfully elude would be tacklers. Joe came from a town where they really play football and it looks like he will be a whizz here for the next three years.



HOWARD HILLIS*Guard*

This was Howard's first year on the squad but he forged ahead by his willingness and ability to learn. Howard is only a Sophomore this year.

DALE GUYER*Center and Guard*

Not above the average size, but Guyer always plays a big mans game. Most of Dale's tackles were made in the opponents backfield. Two more seasons as regular center will give us all state material.

OSCAR NABB*End*

Consistency is only a synonym for Oss on the Gridiron. Oss received the award that was given to the most valuable man on the team this year. His ability to stop the opponents in their tracks, and to go down under long punts makes us realize his value to the team. Oss graduates this year.

LAWRENCE HAINES*Halfback*

Lary was the tripple threat man on the team this year. His educated toe, his passes, and his runs were always helping the Panthers gain ground.

DANIEL LEWIS*Guard and Tackle*

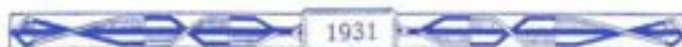
After working at nearly all positions, Dan found the right place this year and played it in fine shape. Dan has one more year.





1931-32 *Football Schedule*

- Sept. 18—Central normal, night, here.
Sept. 25—University of Dayton, night, there.
Oct. 3—University of Louisville, night, there.
Oct. 10—Earlham, day, there.
Oct. 17—Rose Poly, day, there.
Oct. 24—Oakland City, night, here.
Oct. 30—Evansville, night, here.
Nov. 6—Indiana Central, day, here.
Nov. 14—De Pauw University, day, there.



BASKETBALL





DAN McNULTY

Forward

Dan was the Panthers best man under the hoop. His follow in shots and uncanny shooting from the field gave him the honor of being the best net sniper on the squad. Pike has two more years for basketball.

WILLIAM WALLIN

Forward

Swede was another four letter man this year, and ranked fifth in the state in scoring. He was a good passer, dribbler, and could hit the hoop when the Panthers needed some points. The team will miss Swede next year.



PAUL NICELY

Guard

Paul was the smallest man on the team, but made up for this with speed and willingness to mix with the largest of them. It is unfortunate that Paul was a Senior and will not be back next year.

MALCOLM LEMEN

Guard

Red, a Sophomore, played his first year at guard. He was very fast and was good on the offense. Red was the best foul shooter on the team. He has two more years to play.



PAUL ROCKWELL*Captain
Forward and Center*

Rocky played at center and forward this year. His accurate net sniping and his accurate passes together with extreme height gave him all the things necessary for a great star. Rocky will be missed by the Panthers next year.

OSCAR NABB*Guard*

Oss was the man who could settle the team at any time by his consistent playing. They never came too big for Oss to guard. He was also the long shot artist of the team. This four letter man will be missed next year.

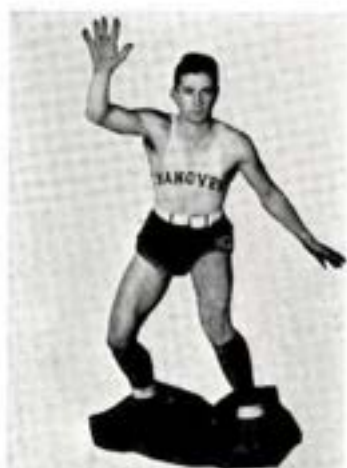
TOM JACKSON*Forward*

Tom was a fast man and was always willing to fight. He became ineligible the second semester and had to quit the team. We hope to have the services of Tom for the next three years.

JOHN GWIN*Guard and Center*

John was a Freshman and didn't hit his stride until the season was well under way. But when he finally got a chance to play guard he did it in excellent style. John is only a Freshman and we believe with three more years of experience he should be material for allstate team.





ROBERT REED

Guard

Bob started the season late but did some very good work while he was out. Bob was just a Freshman this year.

JOE MAZIEKAS

Guard

Joie was a Freshman this year but put up a good battle for a position on the team. Joe has three more years for varsity work.

ELMER MEESE

Guard

Otto, a Sophomore, played his first year on the squad this year. He was a good dependable backguard.



FRANK RAZAVICH

Forward

Frank became eligible the second semester and played a fast game at forward. Frank can hit the hoop from any angle and can get the points when they are most needed. He has two more years of basketball.



DAVID SPANN

Center

Dave played a good game at center—his extreme height gave him a decided advantage over his opponents. He became ineligible at the end of the first semester. He has three more years for varsity work.

JOHN TAGGART

Guard

Taggart, a Junior, made the grade this year at guard. He was always out to win. John has one more year.

HOWARD STOUFFER

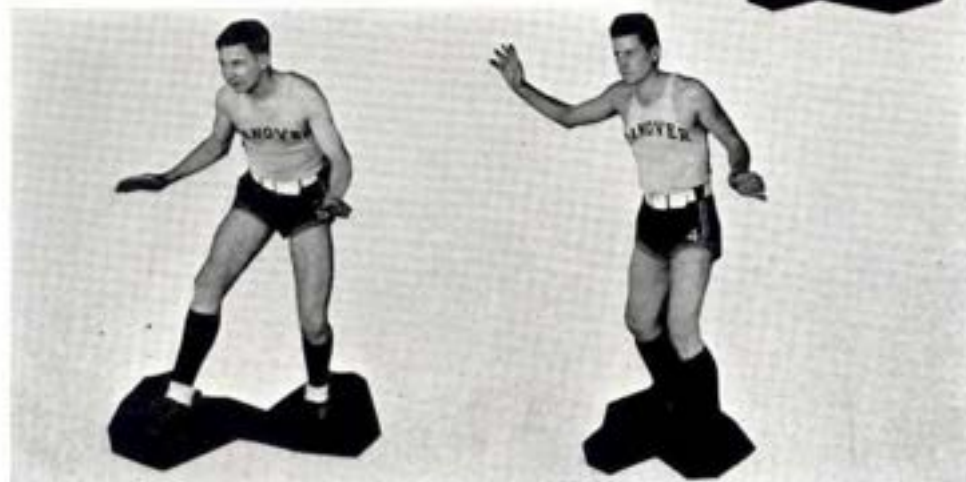
Guard

Howard, a Freshman, was one of the hardest workers on the squad. He did not play in enough games to win his letter, but he has three more year to show his ability.

EDWARD SMITH

Guard

Eddie was another Freshman who showed a good brand of ball. He played a consistent game at floor guard and got to prove his worth in several games. In his next three years he should be an outstanding man to the Panthers.



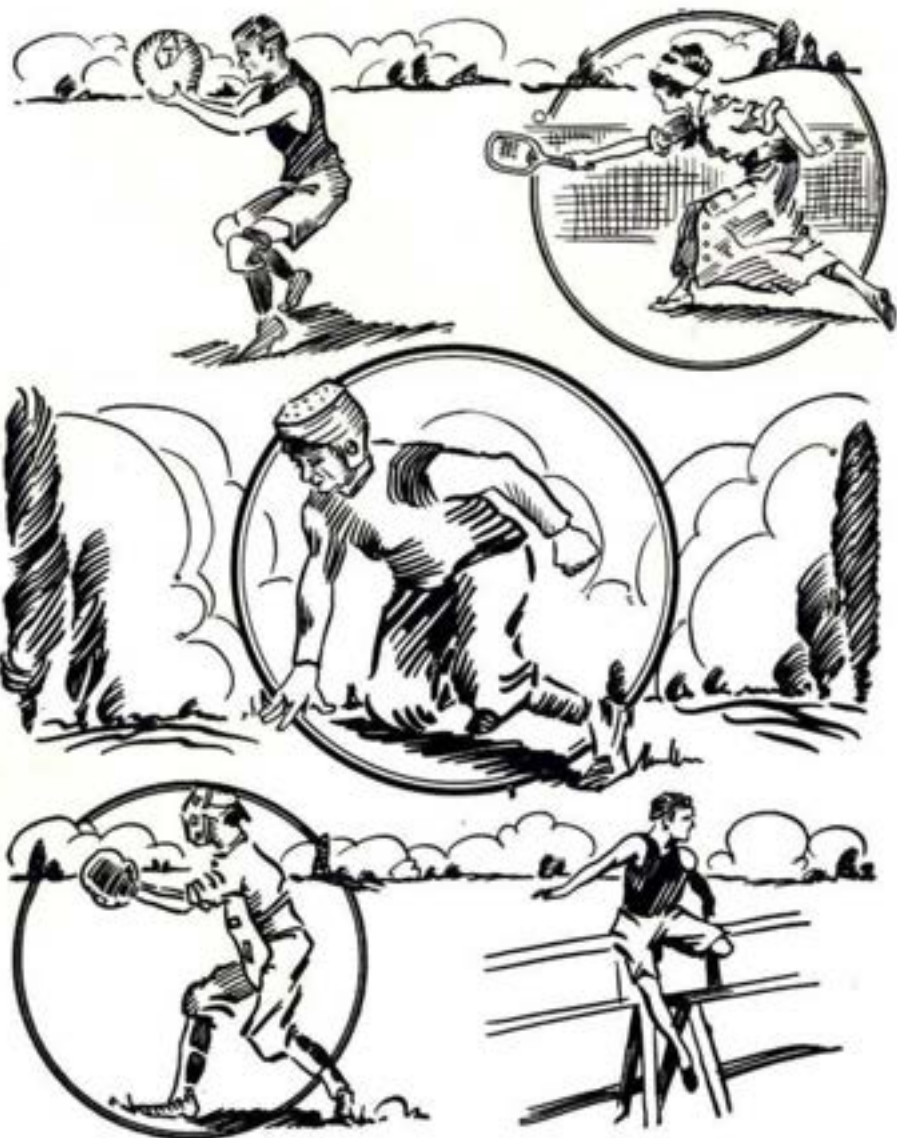


Front Row: C. V. Money, Coach, Paul Nicely, John Taggart, Oscar Sabb, Paul Rockwell, William Wallin, Dan McNulty, Mahlon Lemen, Busby Kysar, Senior Manager.
 Second Row: Robert Reed, Howard Stouffer, Tom Jackson, Dave Spann, John Gwin, Ed Smith, Elmer Moser, Frank Hanavich, and Joe Marlekas.

Basketball Team

The team started the season with a whizz by winning the first three games. The team then hit a slump and lost several games before they could regain their stride. Ineligibility of several of the new men dealt a severe blow to the team at the end of the first semester. Then the Danville game seemed to put some of the old fight back into the boys and they finished the season strong by winning the last four games. Wallin ranked high in the state in individual scoring. The team will miss the services of Rocky, Swede, Oss and Nicely next year, but there is plenty of material left to give Hanover a real basketball team.

INTRAMURAL





William Fuller, Bruce Behmer, James Green, Dale Guyer, Paul Rockwell, Paul Bill, coach, Lyman Thayer, Graham Miller, Bunsey Kaiser, and Robert Cooper.

Inter-Mural Track Winners

In the spring track meet held each year under the Inter-Mural department, the Phi Delt aggregation captured first place with the Phi Gams following immediately behind. Much of the success for the Phi Delt victory goes to Rockwell and Fuller, individual stars and high point scorers of the meet.



Mahlon Lemen, Zaring Hudson, Ray Staples, Del Millican, Kenneth Telle, Oscar Naab, Ray Garriott, Russell Butts, and James Millican.

Inter-Mural Recreation Ball Winners

The Theta Nus smothered all opposition last spring to win the Inter-Mural recreation ball tourney to finish the season with an unbroken string of victories. Success for their unusual victory is due to three factors: first, the sensational heavy batting of their nine; second, the superb defense of the outfield; and third, the sensational pitching of Jim Millican, southpaw.



Gates, Malone, Martin, Willis, Evans, Arbuckle.

Intra-Mural Volleyball

The Volley Ball tourney was a royal battle from the first game through to the last one when the unorganized beat the Betas to gain first honors. The unorganized boys won because of their steadiness and their ability to serve with accuracy. Arbuckle and Martin were probably outstanding for the winners.



Managh, Barbour, Guyer, Hill, Cooperider, Herzer, Anderson.

Intra-Mural Basketball

The Phi Delt's upheld their reputation of being tough to beat in athletics and won the Basketball race with ease. The same thing happened in the Inter-Fraternity Tournament. The Betas were again their strongest foes but the Phi Delt boys won 26 to 24 and thus won some points toward winning the cup which is given the organization winning the most points. The Phi Delt's look like sure winners this year.



Fuller, Hervey, Hill, Cooverider, Jackson, Spann, Stoffeur, Barbour, Razavich, Maliskas, Middleton.

Inter-Fraternity Basketball

The Phi Delts were very good in most of the inter-mural sports this year and along with victories in some of the other sports they easily captured the basketball trophy. They conquered the Betas in the first game which was a very poor game the first half but the Betas came back strong the second and made a more interesting game. The Phi Delts then ran rough shod over the Theta Kapps who had beaten the Phi Gams, and thus won the inter-fraternity trophy. Razavich and Jackson were outstanding for the winners.





MISS VIOLA MITCHELL
Physical Education, Director for Women.



Girls' Varsity Basketball

Basketball is the favorite of winter sports. Almost every girl who is interested in athletics was out for the various teams. In the inter-class tournament, the Upperclassmen team was victorious. The Alpha Delts won the silver trophy in the intra-mural tournament. There is always much excitement over the contest for this cup and the games are always full of pep. The Phi Mus won it last year and the Alpha Delts the year before. There was also a color team round robin tournament which created much interest.



Girls' Varsity Volleyball

Volleyball started at the same time as soccer and ended the last of November. This was the first year we were offered this sport. Under the direction of Miss Mitchell several of the girls became very skilled players and so the Varsity which was chosen was a good one. In fact, volleyball was very popular and will probably become a greater favorite next fall. In the tournaments the Phi Mus won the intra-mural and the Sophomores the inter-class.



Girls' Varsity Soccer Squad

Soccer is the most popular of outdoor sports and is played during October and November. Almost every girl in school was out for some team this year.

There were three tournaments and the first was the color team tournament. Next came the interclass tournament in which the Freshmen and Upperclassmen tied for first place. The last one was the intra-mural tournament in which the Unorganized were the winners.

In the spring we play speed-ball, which is much like soccer and consequently is very much favored.



Woman's Athletic Association

Coed sports at Hanover are conducted under the joint supervision of the Department of Physical Education for Women and the Women's Athletic Association. Most universities and colleges conduct their athletics on the same plan if they are members of the Athletic Conference of American College Women, a national organization to which most W. A. A. groups belong. National and Sectional conferences are held for the purpose of discussing coed sports.

W. A. A. of Hanover usually has a membership of approximately fifty people and is one of the most wide-awake organizations on the campus. Under a national ruling, intercollegiate competition is forbidden but groups may engage in telegraphic meets with other schools. We defeated DePauw last year in a telegraphic track meet.

Coeds may engage in as many as three sports a season and thus the W. A. A. motto is carried out, "A sport for every girl and every girl in a sport." At present we have four girls who are wearing the "H". They are Frances Allison, Naomi Whitcomb, Geneva Risk, and Hazel Boyd. Two of these girls, Frances Allison and Hazel Boyd have received the "H" blanket which is the highest award offered by W. A. A.



GREEK LETTER SOCIETIES

Hanover is fortunate in numbering among its realm some of the foremost Greek Letter Organizations in the fraternity world.

These societies play a great share in the Extra-Curricular Life of the College Student.



Beta Theta Pi



Founded at Miami University 1839
Colors: Light Pink and Light Blue
Flower: American Beauty Rose
IOTA CHAPTER
Installed 1853
MEMBER ON FACULTY
DR. FRANK BALLARD

Row One

Fritz Chapman, '33, Madison.
 Robert Colker, '34, Mitchell.
 Wells Fish, '32, Paris Crossing.
 John Foster, '34, Attica.
 William Faulds, '34, Cincinnati, Ohio.

Row Two

Carlyle Hall, '33, Rising Sun.
 Everett Hall, '32, Dupont.
 Joseph Judkins, '33, Hanover.
 Leland Lurton, '33, Commiskey.
 Robert Kelsey, '32, Rising Sun.

Row Three

Robert Kunkler, '33, Indianapolis.
 James Kelley, '32, Elgin, Illinois.
 John M. Lewis, '32, Washington, D. C.
 Keith Malsbary, '34, Lafayette.
 Robert Moneyhon, '33, Connersville.

Row Four

Paul Nicely, '31, Zionsville.
 Harold Raidt, '33, Hanover.
 Horace Ransdell, '34, Connersville.
 Robert Reed, '34, Charlestown.

Row Five

Gene Reynolds, '34, Hagerstown.
 Ray Stewart, '32, Salem.
 Gene Stonecipher, '32, Hagerstown.
 Clare Tallman, '32, St. Paul, Minnesota.

Absent

Loren Martin, '34, Greensburg.





Phi Gamma Delta



Founded at Washington and Jefferson College 1840

Color: Royal Purple

Flower: Purple Clematis

TAU CHAPTER

Installed 1864

MEMBER ON FACULTY

HENRY R. BURGER

Row One

Lewis Allen, '33, Chicago, Ill.
Stanley Allison, '32, Gardner, Ill.
Forrest Bemish, '33, Butlerville.
Marion Carr, '31, Charlestown.

Row Two

Hilbert Cofield, '34, Madison.
Forrest Couch, '34, Cincinnati, Ohio.
Keith Eads, '34, Connersville.
Farwell Ellis, '33, French Lick.

Row Three

Ed Gansert, '34, Connersville.
John Gwin, '34, Connersville.
Wayne Kempshall, '32, Maroa, Ill.
Daniel McNulty, '33, South Wilmington,
Ill.

Row Four

Frank Menozi, '34, Gardner, Ill.
Kenneth Ratts, '33, New Washington.
Walter Reed, '31, Indianapolis.
Dana Shelby, '33, Charlestown.
Ed Smith, '34, Petersburg.

Row Five

William Smythe, '33, Louisville, Ky.
John Taggart, '32, Charlestown.
William Ulbrich, '34, South Wilmington,
Ill.
William Wallin, '31, Gardner, Ill.
Jerome Wood, '31, Charlestown.

Absent

Charles Browne, '33, Indianapolis.
Charles Horuff, '34, Madison.





Phi Delta Theta



Founded at Miami University 1848

Colors: Argent and Azure

Flower: White Carnation

INDIANA EPSILON CHAPTER

Installed 1868

MEMBER ON FACULTY

R. H. FITZGIBBON

Row One

Ralph Anderson, '31, Columbus, Ohio.
Paul Barbour, '32, Rising Sun.
Bruce Behmer, '32, Columbus, Ohio.
Charles Butler, '33, Columbus.
Robert Cooper, '33, Henryville.

Row Two

Donald Cameron, '34, Bedford.
Dillon Dorrell, '33, Rising Sun.
Harry Francke, '31, Henryville.
Francis Francke, '34, Henryville.
James Green, '33, North Madison.

Row Three

Dale Guyer, '33, Laporte.
Kenneth Hill, '33, Columbus.
Ike Herzer, '34, Garrett.
Lawrence Haines, '34, Greenfield.
Roy Jackson, '34, North Madison.

Row Four

Busy Kysar, '31, Conniskey.
Daniel Lewis, '32, Laporte.
Ray Manauagh, '32, Hanover.
Elmer Mease, '33, Oak Park, Ill.
Paul Rockwell, '31, Rochester.

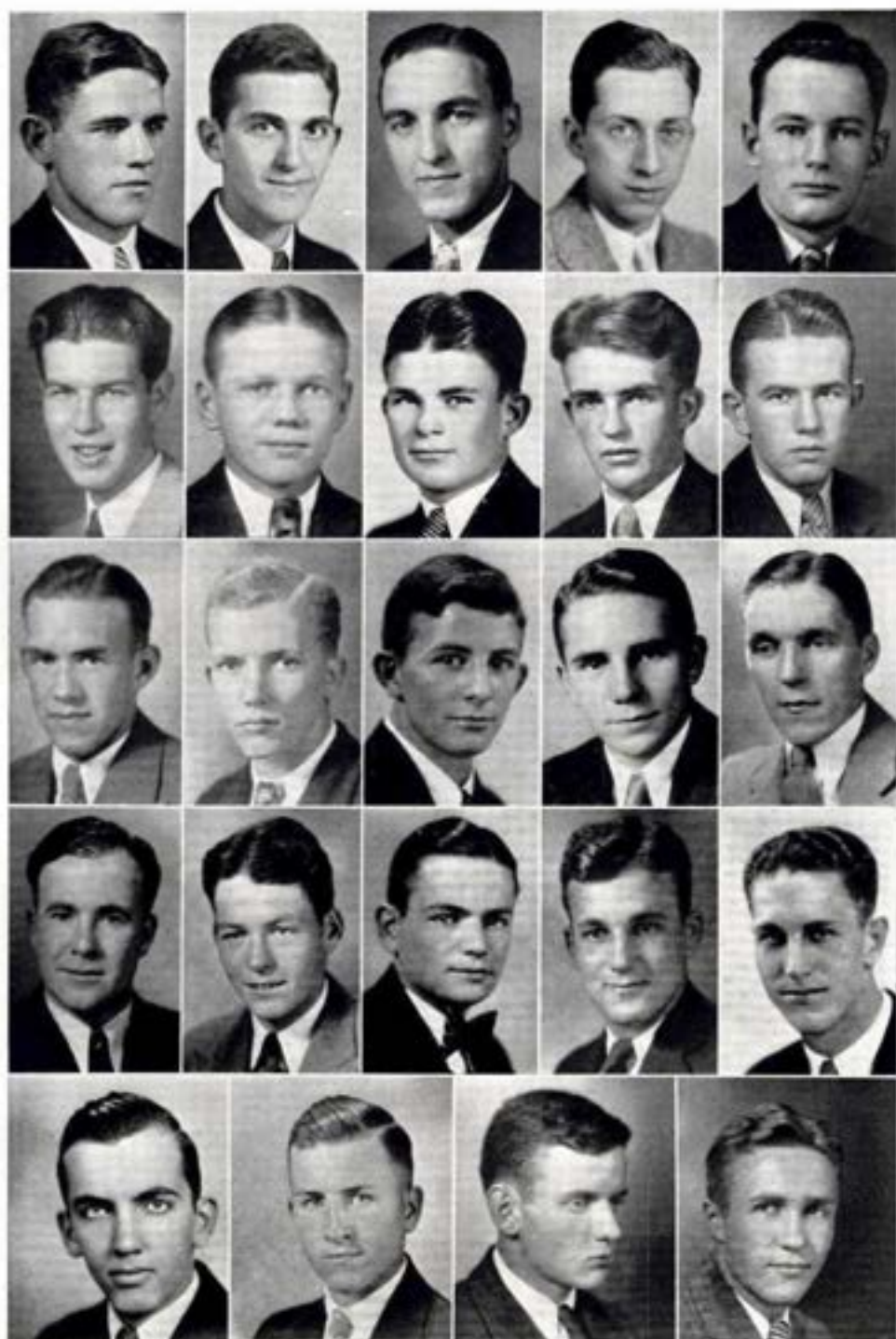
Row Five

David Spann, '34, Madison.
Howard Stouffer, '34, Lagro.
James Snyder, '34, Ashland, Ky.
Charles Thayer, '32, Chicago, Ill.

Not in Picture

George Middleton, '32, Ridgeville.
Allen Cooperider, '33, Scottsburg.
William Fuller, '33, Vevay.
Frank Razavich, '33, Westville, Ill.
Joe Mazickas, '34, Westville, Ill.







Theta Kappa Nu



Founded at Drury College 1924

Colors: Crimson, Argent, and Sable

Flower: White Rose

INDIANA ALPHA CHAPTER

Installed 1924

Row One

Nelson Boicourt, '33, Madison.

Russell Butt, '31, Milan.

Leslie Fox, '32, Indianapolis.

Row Three

Robert Millican, '34, Hanover.

George Millican, '33, Hanover.

Oscar Nabb, '31, Markle.

Ray Staples, '32, Henryville.

Row Two

Wallace Green, '31, North Madison.

Mahlon Lemen, '33, Holton.

Adelbert Millican, '32, Hanover.

Row Four

Claude Stewart, '34, Austin.

Jerry Whitsitt, '31, Austin.

Harry Weir, '33, Salem.

Not in Picture

Lawrence Evans, '34, Columbus.

William Ross, '31, Princeton.

Charles Earnshaw, '34, Okeana, O.







Alpha Delta Alpha



Founded at Coe College 1919
Colors: Purple, Red, and White
Flower: Red Rose

ZETA CHAPTER

Installed 1928

MEMBER ON FACULTY

NED GUTHRIE

Row One

Woodrow Fleming, '34, Milan.
Dale Ferris, '34, Dupont.
Maurice Graston, '33, Dupont.
Lewis Jacob, '33, Sunman.
Elmer Jordan, '31, Milan.

Row Two

Eller Lutes, '34, Eaton.
Joseph Peters, '34, Versailles.
Albert Platt, '33, Youngstown, Ohio.
Bernard Ryncarson, '33, Hanover.







TOP ROW—Paul Nicely, Fritz Chapman, Clare Tallman, Walter Reed, Forrest British, and Wayne Kempshall.

BOTTOM ROW—Ralph Anderson, Ray Manough, Dale Guyer, Jerry Whitsett, Mahlon Lomen, and Ray Staples.

Inter-Fraternity Council

OFFICERS

PAUL NICELY	<i>President</i>
RALPH ANDERSON	<i>Vice-President</i>
JERRY WHITSETT	<i>Secretary</i>
WALTER REED	<i>Treasurer</i>

The Inter-Fraternity Council is an organization of all men Greek Letter societies on the campus to act as their governing body for all fraternal relations. Each semester it sponsors a dance, and each year stages a basketball tournament for the Russell H. Fitzgibbon Plaque for the winning basketball team.



Frances Allison,

Irma Dean,

Ruth Mathews,

Ruth Winters, President.

Pan Hellenic Council

The Pan-Hellenic Council is made up of representatives of two sororities on the campus and acts as their official governing body in all matters pertaining to the organizations as a whole. Each semester it sponsors a dance.

Alpha Delta Pi



Founded at Wesleyan College 1851

Colors: Blue and White

Flower: Violet

PHI CHAPTER

Installed 1913

MEMBER ON FACULTY

Mrs. R. H. FITZGIBBON

Row One

Betty Allen, '32, Evanston, Ill.
 Frances Allison, '31, Gardner, Ill.
 Betsy Bryant, '31, El Paso, Texas.
 Cordia Chambers, '34, Madison.
 Mary Ellen Cooper, '34, Clarksburg.

Row Two

Virginia Corya, '33, Dupont.
 Irma Dean, '32, Hanover.
 Virginia Dibler, '33, Madison.
 Carolyn Dodd, '33, Columbus.
 Dolly Drake, '33, Madison.

Row Three

Clara Ferree, '32, Logansport.
 Stella Firth, '33, Madison.
 Margaret Gibboncy, '34, Seattle, Wash-
 ington.
 Myrtle Hawes, '33, Jeffersonville.
 Pauline Lemen, '34, Madison.

Row Four

Jean Lewis, '33, Madison.
 Dorothy Miles, '32, Madison.
 Marjorie Nighbert, '34, Hanover.
 Mabel Raney, '33, Madison.
 Emily Rea, '33, Madison.

Row Five

Margaret Rea, '34, Madison.
 Jean Shephard, '33, Dupont.
 Leona Snyder, '31, Hanover.
 Betty Willey, '34, Baltimore, Md.







Phi Mu



Founded at Wesleyan College 1852

Colors: Rose and White

Flower: Enchantress Carnation

RHO CHAPTER

Installed 1913

Row One

Mary Lou Clark, '34, Ladoga.
Mary Demarce, '31, Crawfordsville.
Mildred Dugan, '32, Warsaw, Ky.

Row Three

Allene Howell, '34, Jeffersonville.
Maxine Lockeridge, '34, Madison.
Ruth Mathews, '32, Madison.
Grace Nixon, '33, Portland.

Row Two

Evangeline Farrell, '33, Hanover.
Margaret Galbreath, '34, Denver, Colorado.
Allene Gross, '33, Aurora.
Alycen Henderson, '34, Ridgeville.

Row Four

Mary Owings, '34, Vevay.
Martha Perry, '31, Worthville, Ky.
Eleanor Pickhardt, '33, Southport.
Margaret Ricketts, '32, Rising Sun.

Row Five

Lucille Turner, '33, Moores Hill.
Mary Ella Weber, '32, Madison.
Naomi Whitcomb, '31, Vernon.
Ruth Winters, '31, Pittsburg, Pa.







TOP ROW—Ralph Anderson, R. H. Fitzgibbon, Marion Carr, Dean A. H. Woolworth.
 BOTTOM ROW—Margaret Rickotts, Grace Sles, Dr. E. J. James, Bussy Kysar, Elmer Jordan.

Pi Gamma Mu

OFFICERS

- BUSSY KYSAR *President*
 ELMER JORDAN *Vice President*
 RUSSELL FITZGIBBON *Secretary and Treasurer*

Pi Gamma Mu, national honorary social science fraternity, was founded at Southwestern College, Winfield, Kansas, December 1, 1924. The purpose of this fraternity is to encourage young men and women in the scientific study of all social problems and to promote co-operation between the several branches of social science.

Indiana Beta was installed on the Hanover Campus in 1930. At present there are approximately one hundred chapters in various colleges and universities throughout the United States.

Membership in this fraternity requires high scholastic standing in the field of social science.



HONORARY ORGANIZATIONS





TOP ROW—P. Allison, S. Allison, Anderson, Butler, Demaree, Kynar.
 BOTTOM ROW—Nixely, Res, Reed, Stewart, Tallman.

Alpha Phi Gamma

Alpha Phi Gamma was founded at Ohio Northern University at Ada, Ohio, in 1921. This organization was the first national honorary fraternity to be established on the Hanover campus. The purpose of this organization is to promote all student publications and maintain a high standard of journalism on the campus.

Students are eligible for membership who have done outstanding work on the school paper or year book.

Our College as well as the local chapter of Alpha Phi Gamma is honored by having Professor R. H. Fitzgibbon as National President of the fraternity.

OFFICERS

MARY DEMAREE	<i>President</i>
WALTER REED	<i>Sec.-Treas.</i>
RALPH ANDERSON	<i>Bailiff</i>



TOP ROW—Frances Allison, Charles Butler, Howard Hills, Maxine Lane, Mabel Kanev.
 BOTTOM ROW—Arnold Ryker, Dana Shelby, Leona Snyder, Dorothy Stephan, Ruth Winters.

Gamma Sigma Pi

OFFICERS

DOROTHY STEPHAN	<i>President</i>
LEONA SNYDER	<i>Vice-President</i>
ARNOLD RYKER	<i>Secretary-Treasurer</i>

Gamma Sigma Pi is a local honorary scholastic fraternity formally installed in Hanover College in 1926. Its purpose is to stimulate academic interest and to reward in some way high scholastic attainments. In its five years of existence in Hanover College, it has aided in culminating its purpose by numbering among its members some of the most worthy students who have graduated from Hanover. Membership is open to all with the requirement that all neophytes have attained a 2.5 average or better for two semesters out of three.



TOP ROW—Harry Francko, Geneva Hisk, Ivan Rogers.
 BOTTOM ROW—Arnold Ryker, Leona Snyder, Dorothy Stephan.

Delta Epsilon

Delta Epsilon was founded at Colorado College in 1921, the Hanover chapter being installed in 1929. The fraternity encourages its members to work toward a general knowledge of all the sciences and a higher knowledge in a particular science. Any person to be eligible for membership in this fraternity must have a B average in their science Major. Professors Martin, Guthrie, Wickwire, and Hyatt are faculty members who belong to this fraternity.



C A L E N D A R

September

M T W T F S

1	2	3	4	5	6
8 Football Prac- tice begins.	9 Oh! Oh! these football appet- ites! !	10 Freshmen be- gin to arrive.	11 Freshmen re- gister.	12 Reception for Freshmen at Dr. Ballard's home.	13 Upperclassmen register.
15 Classes begin.	16	17 W. A. A. walk- out at Hanover Beach.	18	19 Oh, how we hate to get to work for class- es.	20
22 Class elections —Rocky is Senior Pres.	23 Freshman and Sopho- more scrape! ! We wonder who won? We rush the show.	24 Phi Mu Formal Rush Party.	25 Alpha Delta Pi Formal Rush Party at Cravenhurst.	26 First football game—We beat Lindsey- Wilson	27
29	30 Sorority Pledge Services				



October

M	T	W	T	F	S
		1 Dramatic Club Tryouts	2	3 Pep session— Beat Louisville	4 Hanover vs. Louisville. We lose.
6 Make-up ex- ams.	7 Miss Lois El- der of Persia speaks in chapel.	8 Dramatic Club Tryouts.	9	10 Pep Session Sophs vie with Freshies for yelling honors.	11 Inter-Frat Dance.
13 We hear how student tax is spent.	14	15 How we love to walk on rocks every time we step in Hanover!	16	17 Pep Session— Everyone is ready for a big day.	18 Homecoming Dedication of Ball Drive Football Game Dance. Betas win cup.
20 Musical Pro- gram in chapel.	21	22 Beta Pledges entertain with Inter-Frat Pledge Smoker.	23	24 Pep Session	25 Hanover vs. Oakland City 6-6.
27 Academic Assembly Dr. Harry L. Crane is speak- er.	28 Women stage night Soccer game. Pajama party at Dorm.	29	30 Hallow'en Party Bob Cooper makes hit as Miss Hanover.	31 Hanover vs. Evansville.	



November

M	T	W	T	F	S
					1 Phi Mu Dance
3	4 Some people are lucky enough to get to vote—in other words, they have a vacation.	5 Dramatic Club Freshmen give three plays.	6	7 Men's Glee Club Entertains us in Chapel.	8 Hanover vs Earlham 7-7. Robt. McG. Money arrives.
10 Whooper! Vacation! We rush show and have a dance.	11 Armistice Day	12	13	14 Hanover vs. Wilmington.	15 Alpha Delta Pi Dance.
17 Violin recital in Chapel by Prof. Poland.	18	19 Pi Gamma Mu Installation and Dinner	20 Academic Assembly Dr. James W. Milligan is speaker.	21	22 Phi Delt Dance
24 Oh, boy! Just two more days till vacation.	25	26 Thanksgiving vacation begins.	27	28	29





December

M	T	W	T	F	S
1 Vacation ends	2	3	4 Indiana Academy of Science meets at Franklin College.	5 Theta Kappa Nu Dance.	6 First B. B. game Hanover vs. N. A. G. U.
8 W. A. A. Awards made in Chapel. Soccer Varsity Chosen.	9 Academic Assembly Dr. Thurman Rice is speaker.	10 Dr. Rankin comes to teach Dr. Ballard's classes.	11	12 Alpha Delta Alpha Dinner and Theater Party.	13 Phi Gamma bold dance.
15 Hanover Community Orchestra plays in Chapel.	16	17 We wonder if vacation will ever come?	18	19 Gamma Sigma Pi Initiation Freshman Dance	20 Pan Hell Dance
22 Student sing of carols in Chapel.	23 Xmas vacation begins.	24	25	26	27
29	30	31			



January

M	T	W	T	F	S
			1	2	3
5 <small>Vacation Ends</small>	6	7 <small>Freshmen Declamation Contest. A. Henserson wins first prize.</small>	8 <small>Academic Assembly Dean Stanley Coulter is speaker. Hanover vs Oakland City We win!</small>	9	10
12 <small>S. S. Basketball League begins tourney.</small>	13 <small>Faculty vs Seniors. What a wow!</small>	14	15 <small>Hanover vs Danville Normal. We lose.</small>	16 <small>Hanover vs Evansville.</small>	17 <small>Dramatic Club present "The Patsy".</small>
19 <small>Piano Recital in chapel by Mrs. Montgomery.</small>	20	21 <small>Registration for second semester begins.</small>	22 <small>Hanover vs Indiana Central.</small>	23 <small>Dr. Rankin leaves Hanover.</small>	24 <small>Hanover vs Manchester.</small>
26 <small>Blue Monday Exams begin.</small>	27 <small>Oh, dear! What do these profs mean?</small>	28 <small>It grows worse.</small>	29 <small>Exams End. Hooray! Vacation Begins</small>	30	31

February

M	T	W	T	F	S
2	3 <small>Second Semester begins.</small>	4 <small>Dr. Ballard resumes his teaching after a long illness.</small>	5	6 <small>Hanover vs Indiana Central.</small>	7 <small>Susan Lynette Parker arrives.</small>
9 <small>Violin recital by Max Poland in chapel.</small>	10	11	12 <small>Hanover vs Louisville.</small>	13 <small>Pep Session</small>	14 <small>Valentine Day Dorm mail overflows with boxes of candy.</small>
16 <small>Concert in chapel by Women's Glee Club.</small>	17 <small>Hanover vs K. M. I. We win.</small>	18	19	20 <small>Hanover vs Wilmington</small>	21 <small>Debate with Indiana Law School. We lose.</small>
23 <small>Student Committee for Triangle contest chosen during chapel hour.</small>	24 <small>Hanover vs Vincennes</small>	25	26	27 <small>Musical Program in chapel by students.</small>	28 <small>Lucky break for calendar editor. No more days to fill in.</small>



March

M	T	W	T	F	S
<p>2</p> <p>Piano Recital in chapel by Ruth Winters.</p>	<p>3</p> <p>Fitz and his Amer. Govt. students visit the Legislature. Wonder why Bussy went?</p>	<p>4</p>	<p>5</p> <p>Academic Assembly Dr. Rainey of Franklin is the speaker Phi Deltas win inter-frat b. b. trophy.</p>	<p>6</p>	<p>7</p>
<p>9</p> <p>Violin Recital in chapel by Prof. Poland.</p>	<p>10</p>	<p>11</p>	<p>12</p>	<p>13</p> <p>Women's Glee Class gives program in chapel.</p>	<p>14</p> <p>Alpha Delta Pi Open House.</p>
<p>16</p> <p>Men's Glee Club sings in chapel.</p>	<p>17</p>	<p>18</p> <p>Women's Basketball Varsity vs Subs in Men's Gym.</p>	<p>19</p> <p>Mrs. Montgomery and Prof. Poland broadcast over WHAS.</p>	<p>20</p>	<p>21</p> <p>Phi Mu Pledges hold a breakfast Dance for actives at Hillside.</p>
<p>23</p> <p>Varsity H Club presents football certificates in chapel.</p>	<p>24</p>	<p>25</p> <p>Delta Epsilon initiates new members.</p>	<p>26</p> <p>Men's and Women's Glee Clubs give a concert at Lutheran Church in Madison.</p>	<p>27</p> <p>Pan Hell Dance</p>	<p>28</p> <p>W. A. A. holds annual Play Day for high school girls.</p>
<p>30</p>	<p>31</p> <p>Easter Egg hunt is staged for students by faculty.</p>				





Compliments of

Dr. Henderson
DENTIST

Madison, Indiana

Phones: Office 516, Home 241

Highest Grade
DOMESTIC COALS

MADISON COAL
and
SUPPLY COMPANY

Packard, Willeys Knight
and Whippet

24 HOUR SERVICE

Phone 158

Body and Fender Work
a Speciality

WOOLEY'S

Jeweler and Optician
Expert Repairing

WOOLEY'S

Coleman Motor
Company

Chevrolet Sales and Service
Genuine Chevrolet Parts

Madison, Indiana

Ohio River Elevator
Company

Plymouth Coal
Sand and Gravel

Phone 139

Madison, Indiana

Lou Perry's Toggery

MADISON, INDIANA

Students Shop



Also Manager

*Lou Perry's Footwarmers
Hanover's Favorite Orchestra*

PYROFAX

*The Ideal Fuel Beyond
The Gas Mains*

FOR

COOKING, WATER HEATING

AND

INDUSTRIAL USE

Madison Light & Fuel Co.

Phone 282

What We Say We Substantiate

That's the Vail Custom

What We Sell We Guarantee

That's the Vail Policy

What We Do Is Done Well

That's the Vail Service

VAIL OF MADISON
FURNITURE, RUGS
HOME FURNISHINGS

"A Century of Reliability"

That's the Vail Slogan

EARL ELDRIDGE

—GROCER—



Most Complete Line
of
Students Needs
in Hanover



Delivery Service

Phone 22

Compliments of



Bill's Shoe Shop



Hanover, Indiana

*We're Supporters of the
"Revonah" and we want
Hanover College Students to
Support us*

**STANDARD NUT
and
MARGARINE CO.**

Indianapolis, Indiana

R. McKIM

Dealers in

*High Grade Campbell's
Creek Lump and Egg Coal*

MADISON, INDIANA

J. CLARK HILL DEAN C. HILL
Established January 1899

**J. C. HILL & SON
MERCHANTS**

NO sale is satisfactory to us until it is
satisfactory to our customers. Ask us for
unusual articles that the ordinary store
does not carry in stock.

HANOVER, INDIANA

Try KYLES For
FANCY GROCERIES

*Government Inspected Meats
Quality Service
Courteous Treatment*

Raymond Kyle
PHONE 76

DR. PAUL FEWELL
DENTIST
X-RAY DIAGNOSIS

Phones:

Office 626

Residence 663-X

MADISON, INDIANA

*"Say It With Flowers
Say It With Ours"*



L. E. HITZ

*See OSCAR
For the Latest Style in
JEWELRY
and Expert Repair Work*

OSCAR C. BEAR
Jeweler and Optician

M. Ernst and
Company
*The Right Hat
at the
Right Price*

STANTON'S
Good Shoe

*Madison's Leading Shoe Store
Since 1858*

C. A. Stanton's Sons
MADISON, INDIANA

HERTZ'S
*Madison's
Favorite
Shoe Store*
MULBERRY STREET

N. HORUFF'S SONS
Madison's Leading Shipping Center

*"The Last Word in Style
Quality and Pure"*

Dry Good's
Ready To Wear Garments
Floor Coverings

Latest Fashions in Smart
Wearing Apparel
Gordon Silk Hosiery
Worn by Fashionable Women

Daily and Roth
Company

"The Busy Store"

MADISON, INDIANA

Rodger's Bros.
Coal Co.

Dealers In The Best

KANAWHA RIVER COAL

Hanover, Indiana

Compliments of



Hanover Hotel



J. O. TAFF, Prop.

Compliments of

Krue Dry Cleaning
Works

Madison, Indiana

Phone 521-L

Compliments of

IRELAND OF COURSE
C. H. ROUSCH'S BOOK STORE
COFIELD & BARBER
STEVE THE BARBER
WYKOFF & FEURESTIN SHOE REPAIRING
HENTZ BAKING COMPANY
HEN & BEN THE SHOE MEN
ELMER E. SCOTT WHOLESALE DEALER



Dodd's Studio

SCOTTSBURG, INDIANA

Phone 150



BRANCHES

Madison, Indiana
121 E. Main St.

Rising Sun, Indiana
2nd Floor
Masonic Building



PORTRAIT
COPYING
COLORING

COMMERCIAL
ENLARGING
FRAMING

AMATEUR SUPPLIES AND FINISHING



*All Negatives are Kept on File for Convenience
of our Customer*

MAIL ORDERS GIVEN PROMPT ATTENTION



One Hundred Twenty-five



*Every Student Should Read
A Daily Paper*



The Madison Courier



*Will Be Found In
The College Library*



One Hundred Twenty-six



*Let's Take
a Swim
at
Nor-Rose
Pool*



(Tested by the State Board of Health)

*Compliments
of*
College Confectionery
JAY C. TAFF

*Compliments
of*
A Hanover Booster



One Hundred Twenty-seven



*Food Should be Kept Fresh and Pure
by Refrigeration*

Electric Refrigeration is the Best and Cheapest Method

*General Electric Refrigerators
for sale by*

Madison Light & Power Company

PHONE: 287

W. H. Miller & Sons

Wholesale and Retail

Lumber and Millwork

Sidney E. Haigh
Funeral Directors
Invalid Cars
Ambulance Service
Flowers for all Occasions
Phone 72 or 672
Madison, Indiana



One Hundred Twenty-eight



*High Class Printing for Every Need
of the Business and the Fraternity*

LETTER HEADS, ENVELOPES, BUSINESS FORMS
AND FRATERNITY PUBLICATIONS

Democrat Printing Company

Down on West Street

Madison - - - - Indiana

Compliments of

J. P. Michael
Company

Indianapolis - Indiana

*Specializing in gallon canned
foods for College and
Fraternity use*

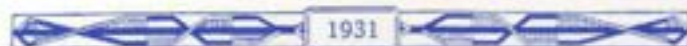
J. P. M. and Fayette Brands

☞

KNOEBEL
DRY CLEANERS
PRESSERS
DYERS

Madison - Indiana

☞





Compliments
of
The
Hanover Deposit
Bank

Note Books, Loose Leaf and Bound
Fountain Pens, Sheaffer, Parker
Carter and Educator
College Jewelry and Pennants
Orders for Books Solicited
Start Building Your Library
Used Books Sold for Students
Hanover College Book
Store
HENRY M. LEE, Manager

F. E. ZEPF & CO.
DRY GOODS

☞
Madison, Indiana
Phone 348

BOICOURT'S
Beauty Shoppe

☞
Phone 679
Madison, Indiana

☞
KNOEBEL'S
Madison's Best
Clothing
House

Compliments of
THE
LODGE
HARDWARE
COMPANY
Madison, Indiana





Hillside Hotel



Located on Cool Bluff, Overlooking the Ohio River
at Eastern Edge of City



Fine, Clean, Modern Accommodations



*Private Dinners and Banquets
a Specialty*



G. E. DENNY, Proprietor
MADISON, INDIANA





WITH A THEATRE TICKET FOR A PASSPORT
YOUR DESIRE FOR STRANGE PORTS MAY
BE REALIZED.

AN HOUR OR TWO AWAY FROM FAMILIAR
SCENES, TIRESOME DRUDGERY - - AND YOU
ARE BACK REFRESHED - - READY TO
TACKLE THE JOB BEFORE YOU.

THE MADISON AND GRAND THEATRES

BRING STRANGE PORTS TO YOU EVERY
WEEK - - MAKE IT A HABIT TO VISIT
THESE THEATRES OFTEN. THE PICK'O
THE PICTURES - - PROPERLY REPRODUCED

Compliments of

National Branch Bank

and

Madison Safe Deposit & Trust Company

Madison

Indiana



THE HANOVER GARAGE



SENIORS--Here's wishing you the breaks.

JUNIORS, SOPHOMORES AND FRESH--We hope to see you all next term.

Everything For An Automobile

FRANK BOVARD

Phone 25
HANOVER, IND.



"CRAVENHURST"

R. R. No. 5--ON STATE ROAD No. 29
MADISON, IND.

Rooms for Guests

*Bridge Luncheons, Club Dinners
and Chicken Dinners*

BY RESERVATION

Phone 242

"The LaGranges"

PARDY'S RESTAURANT



On January 1st, 1906, Pardy's Restaurant was opened to the public and to the present time has continued it's policy of good foods.

Dinners or night lunches are served at reasonable prices. Their slogan "*Pardy's, where Friends Meet.*" is true of the students of Honover or in Madison.

"Meet You At Pardy's"



If it's to be had in a Drug Store, Inglis has it
 Phone 10 Madison, Indiana

Advanced Frigidaire Refrigeration
EDWARD ECKERT & SONS
 Madison, Indiana

The L. G. Balfour Company
 ATTLEBORO, MASSACHUSETTS

Manufacturers of
 Badges, Rings, Favors, Programs, Stationery,
 Fraternity Jewelry, Memorial Tablets, Emblem Insignia,
 Athletic Figures, Metals, Cups, Medallions, Plaques, Door Plates

"Known Wherever There Are Schools and Colleges"

Taste Tells
Glasses Velvet Ice Cream

Glass Dairy Company

Established 1845

MADISON, INDIANA

Taste Tells



If it's to be had in a Drug Store, you can get it at
Rogers Madison's Modern Drug Store

Constantly Searching



For centuries astronomers have looked into the skies searching for new worlds, constellations and stars. Aside from their interesting research work, they have learned much that is of practical scientific value.

Similarly, in the field of student publications, the Indianapolis Engraving Company searches constantly for new ideas, plans and methods that will assist year-book staffs to publish successfully books characteristic of their school and community. The results of these efforts are gratifying.

The Annual Planning and Designing Department welcomes your inquiries for further information.

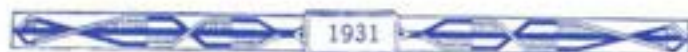
Established 1897

INDIANAPOLIS ENGRAVING COMPANY
 Department of Annual Planning and Designing
 INDIANAPOLIS, INDIANA





Autographs



14858

For Reference

Not to be taken from this room

IND COL
379.77213
REV

For Reference

Not to be taken

from this library

MADISON-JEFFERSON COUNTY PUBLIC LIBRARY



3 9391 00036761 3

Hanover College/Revonah
IND COL 379.77213 REVV C.1 INDIANA 19