

IND COL
379.77213
REV



THE
REVONAH



MADISON-JEFFERSON COUNTY PUBLIC LIBRARY



COPYRIGHT

WILLIAM FAULDS
Editor-in-Chief
HILBERT COFIELD
Business Manager

IND COL
379.77213
REV



The
REVONAH

PUBLISHED BY THE JUNIOR CLASS OF
HANOVER COLLEGE • • HANOVER, INDIANA

1933



CLASSIC HALL

In the minds of Hanover students will ever remain the picture of Classic Hall. It has stood in its familiar place for many years welcoming students coming to and lamenting those going from its halls. If it could but speak, many are the tales it could tell.

It could tell of the river flowing between the towering hills; it could tell of the stately trees growing from mere shrubs to their now outstanding beauty; it could tell of Father Time changing its surroundings, perhaps sighing at the loss of a once-loved environment, but being consoled in the thought of new and grandeur beauty.

May the students of today remember Classic Hall and reverence it, as have the students of yesterday.





A familiar scene to the students of the College: the end of the fourth hour, signifying home and lunch, with company on the way.



CONTENTS

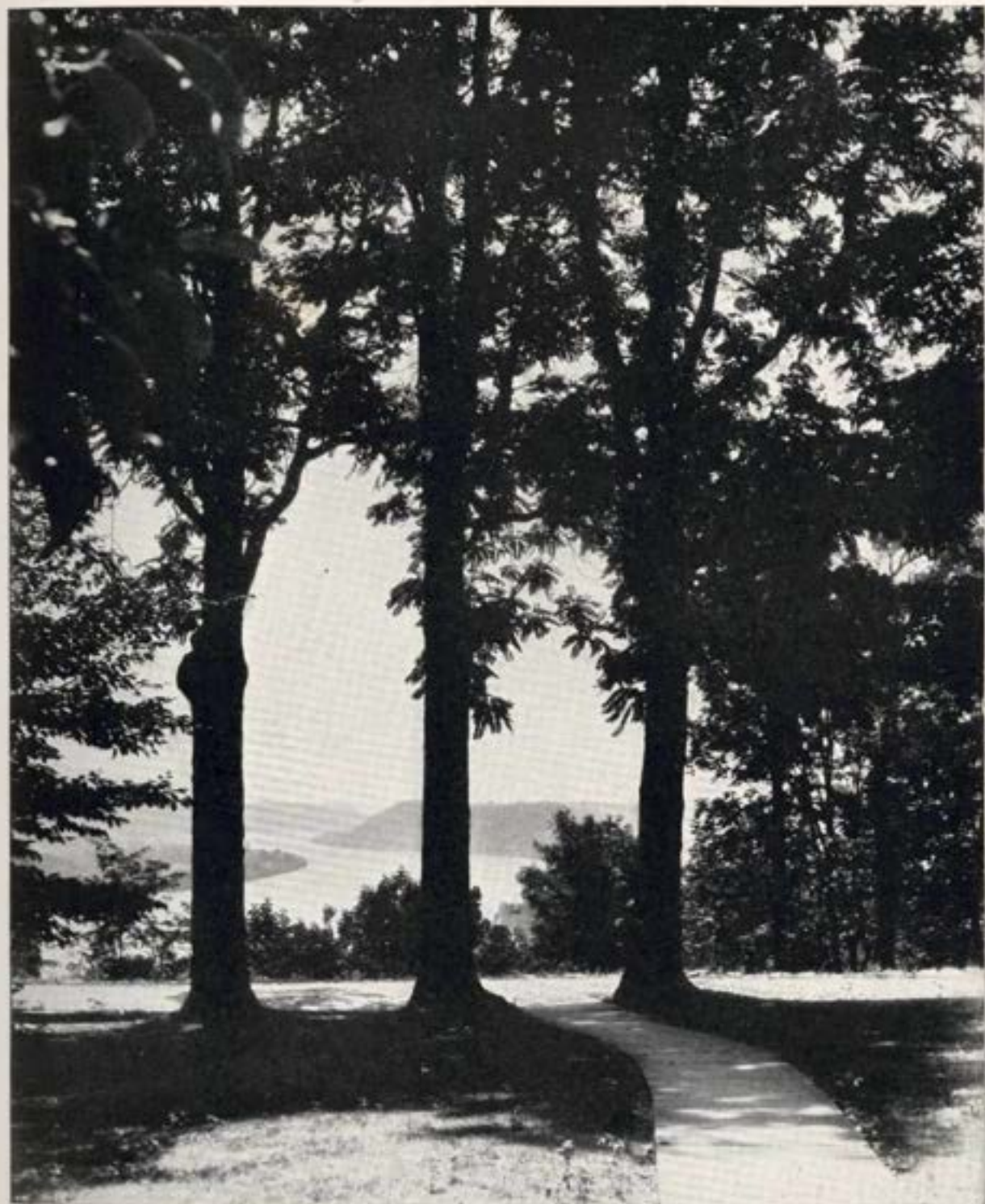
● 
COLLEGE

● 
ACTIVITIES

● 
ATHLETICS

● 
FEATURES







Madison From the Hills

The city of Madison, once the most important on the Ohio River, is as rich in its early history and tradition as any other in the state. In it is the famous Lanier Memorial, the home of the Lanier family, which has been restored in every detail, and now, under the State Board of Parks, presents an accurate conception of life in the golden days of the Ohio River steamboats. This view of Madison, taken from the observation point at Cragmont, is typical of the scenes about Hanover, all dominated by the sight of the river flowing majestically through its deep valley.



Ball Memorial Rock

The Lucina Ball Memorial Rock, standing on the very edge of the bluff from which Hanover looks out over the Ohio, commends the gift of the Ball family to Hanover of the paved drive which encircles the campus.

Classic Hall

Classic Hall, which contains the classrooms and chapel of the Liberal Arts School, is, since its redecoration, a college building which has no superior in beauty, architecture or tradition in the country.





Crowe Falls

This view of Crowe Falls looking towards the Hanover Campus, presents a scene typical of the many valleys and trails about our school. Here one may enjoy waterfalls and rock formations equal to any in the country and untouched by the hand of man.

Well House

The Well House, built of many kinds of rock, serves as a popular meeting-place for all, and as a field trip close at home for the geology classes.





The President's Home

This historic old house, which has been standing almost as long as Hanover College, has housed the presidents of the College in their many years at the head of the institution. Its recent repainting and redecorating show the forward trend which is so evident on the Campus of today.



Faculty Row

The recently constructed homes for the faculty are modern in every respect, symbolizing the "New Hanover", and its undeniable upward progress under the administration. The graduates as well as the students may well be proud of their Alma Mater.



COLLEGE



Dr. Albert George Parker, Jr. is enjoying his fourth year in the capacity of President of Hanover College. Previous to taking over the reins of this institution, he was a missionary in China.

He is an accomplished man of letters. His foresight and precision have brought many student contacts. He has to his credit an A. B. from Park College, B. D. Presbyterian Theological Seminary of Chicago, Ph. D. University of Chicago, and LL. D. bestowed by Wabash College.

During his administration drastic changes have been made not only in the physical aspects of the campus but also in the faculty and curriculum.



PAUL S. CONKLIN
Professor of English
B. S. Northwestern University;
A. M. University of Wisconsin;
additional work at the Universities
of Wisconsin and Chicago.

HENRY W. BURGER
Secretary-Treasurer
B. S. Hanover College; B. D.
McCormick Theological Seminary;
D. D. Hanover College.



HENRY M. LEE
Assistant Librarian and Manager of the Book Store
A. B. Hanover College.

JOHN M. VAN LIEW
Director of Physical Education
B. S. Illinois; additional work
—Illinois, Columbia, Notre
Dame, Harvard, Drake.

RUSSELL H. SEIBERT
Professor of History
A. B. Wooster College; additional
work — Bowling Green
State College; A. M. Chicago.

OSCAR K. DIZMANG
*Professor of Social Science
and Business Administration*
B. S. Kans State Coll. of Agric.;
M. A. Chicago; additional
work—two years at Chicago.



HERBERT A. MEYER
Professor of Mathematics
B. S. Des Moines University;
M. S. University of Iowa; Ph.
D. University of Iowa.

LEO V. BARKER
Prof. of Philosophy and Bible
A. B. Princeton; B. D. Union
Theological Seminary; A. M.
Columbia University; additional
work at Columbia University.



KATE ANDREWS

*Dean of Women and Assistant
Professor of English*

A. B. Wellesley College; additional work at the Universities of Chicago and Columbia, and at Rome.



VIOLA MITCHELL

*Director of Physical Education
for Women*

A. B. DePauw University; graduate work at University of Iowa.

NED GUTHRIE

Professor of Chemistry

B. S. Illinois Wesleyan University; M. S. University of Illinois; one year graduate work at the University of Illinois.



GRANT T. WICKWIRE

Professor of Geology

Ph. B. Wesleyan University; M. S. Yale University.



R. EARL MARTIN

Professor of Physics

A. B. Indiana University; M. S. Lehigh University; Ph. D. Indiana University.

JOSEPH L. HYATT

Professor of Biology

B. Ed. Illinois State Normal University; M. S. University of Illinois; additional work at Indiana University.



W. MAXWELL POLAND

Director of Music

B. S. Ball State Teachers' College; additional work at the University of Michigan.

CHARLES C. HOWER

Professor of Ancient Languages

A. B. North Central College; A. M. University of Illinois; additional work at the University of Illinois.



RUSSELL M. KUTZ
*Professor of Education and
 Director of Teacher Training*
 A. B. University of Wisconsin;
 A. M. University of Wisconsin;
 Ph. D. University of Wisconsin.

MARY LOUISE FITTON
Librarian
 A. B. Indiana University; B. S.
 (Library Service) Columbia
 University.



JEAN J. ANDERSON
Professor of Modern Languages
 A. B. Indiana University; A. M.
 Indiana University; travel and
 study in Europe.

MARIE GARTEN
*Assistant Professor of Modern
 Language*
 A. B. Carthage College; A. M.
 University of Chicago; additional
 work—University of Iowa.

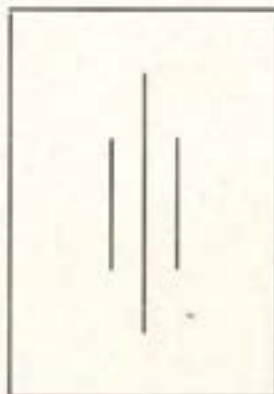
MARK L. ENTORF
*Professor of Social Science
 and Psychology*
 A. B. Grinnell College; addi-
 tional work—one year at Co-
 lumbia, one year at Chicago,
 two years at Harvard.



ANNA MARIE FISHER
Instructor in Education
 B. S. Ball State Teachers' Col-
 lege.

(No Picture)
RUSSELL H. FITZGIBBON*
Assistant Professor of History
 A. B. Hanover College; A. M.
 Indiana University.
 *Absent on leave 1932-33.

(No Picture)
MRS. ALBERT H. WATTS
Instructor in Education
 A. B. Franklin College; B. S.
 Franklin College.





SENIORS



ROBERT COOPER

CARLETON GREGG

At Hanover, as in all institutions of higher learning, it is the seniors to whom we look for guidance and wisdom. They have experienced what the rest of us are to experience; theirs have been the years which we are now living. Naturally, because of their place of seniority they have the leadership in campus activities, classrooms, and fraternity life. Upon them rests the burden of rationalizing the freshmen; the final mellow joys of college life are for them.

Because of their place, they gain first position in the record of our school year. Their own leaders for the year have been Robert Cooper, President; Carleton Gregg, Vice-President; Grace Nixon, Secretary, and Carlyle Hall, Treasurer.

This year they will tread the planks of the village church, then leave the halls and hills of the college for their places in life. Here's to them! May they be both prosperous and happy.

GRACE NIXON

CARLYLE HALL



CHARLES BUTLER

Φ Δ Θ

Columbus, Ind.

Triangle Staff 1, 2, 3; Gamma Sigma Pi 2, 3, 4; Dramatic Club 1, 2, 3, 4; Student Council 2, 3, 4; Alpha Phi Gamma 2, Pres. 3, 4; Glee Club 1, 2, 3; Chapel Choir 1, 2, 3; Y. M. C. A. 1, 2; Social Science Club 1, 2, 3; Science Club 1, 2, 3, 4; German Club 3, 4; Spanish Club 1, 2, 3; Class Treas. 2.

DANIEL McNULTY

Φ Γ Δ

So. Wilmington, Illinois.

Philal. Union 1; Spanish Club 1, 2, 3; Varsity "H" 1, 2, 3, 4; Football 2, 3; Basketball 1, 2, 3, 4, Captain 3, 4; Intramurals 1, 2, 3, 4; Science Club 1, 2.

EVANGELINE FARRELL

Φ M

Hanover, Ind.

Glee Club 1, 2, 3; W. A. A. 1, 2, 3, 4; Science Club 1; Orchestra 1, 2, 3; Varsity Soccer 1, 2, 3, 4; Speedball 2; Basketball 1, 2; Volleyball 2, 3, 4.

MAXINE LANE

New Albany, Ind.

W. A. A. 1, 2, 3, 4; Gamma Sigma Pi 2, 3, 4; French Club 1, 2, 3, 4, Vice-Pres. 2; Women's Student Govt. Ass'n Vice-Pres. 4; Y. W. C. A. Cabinet 3, 4; Social Science Club 1, 2; Science Club 2; Dramatic Club 2, 3, 4; Eloise Mills Declamation Contest Prize 1.

CHARLES THAYER

Φ Δ Θ

Berwyn, Ill.

French Club 2; Dramatic Club 3, 4; Social Science Club 3; Football 3, 4.

JOSEPH JUDKINS

Β Θ Η

Hanover, Ind.

Band 1, 2, 3, 4; Science Club 1, 2, 3, 4; Chapel Choir 4.



ROBERT KUNKLER

Β Θ Η

Indianapolis, Ind.

Football 1; Triangle Staff 1; Intramurals 1, 2, 3, 4; Student Council 4; Social Science Club Vice-Pres. 4.

FORREST BEMISH

Φ Γ Δ

Battleville, Ind.

German Club 1, 2, 3; Science Club 1; Intramurals 1, 2, Mgr. 3, 4; Student Council 2, 3; Interfraternity Council 2, 3, 4; Triangle Staff 2, 3, 4; Philal. Union 1.



JAMES CHVATAL

Φ Γ Δ

Cicero, Illinois

Morton Junior College 1, 2, 3; Social Science Club 3, 4; Intramurals 2, 4.

GLADYS GELVIN

Versailles, Ind.

Science Club 2, 3, 4; French Club 2; Gamma Sigma Pi 2, 3, Pres. 4.



FRANK RAZAVICH
Φ Δ Θ

Westville, Ill.

Univ. Ill. 1; Varsity Football 2, 3, 4; Varsity Basketball 2, 3, 4; Interfraternity Council Pres. 4.

GRACE NIXON
Φ M

Portland, Ind.

Women's Student Gov't 3, 4; Sec'y 3, Pres. 4; Student Council 2, 3, 4; French Club 1, 2, 3, 4; Vice-Pres. 1, Treas. 2, Pres. 3; W. A. A. 1, 2, 3, 4, Pres. 3; Y. W. C. A. 1, 2, 3, 4, Vice-Pres. 4; Sec'y Senior Class Glee Club 3; Social Science Club 1; Science Club 1; Varsity Soccer 3, 4; Varsity Hockey.



ROBERT COOPER
Φ Δ Θ

Henryville, Ind.

Philal. Union 1; Science Club 1, 2, 3; Social Science Club 1, 2, 3; Intramurals 1, 2, 3, 4; Senior Class Pres. 4; Baseball Mgr. 3, 4.

DILLON DORRILL
Φ Δ Θ

Rising Sun, Ind.

Science Club 1, 3; Social Science Club 2; Spanish Club 1, Vice-Pres. 2; Class Treasurer 3; Varsity Football 1, 2, 3, 4; Intramurals 1, 2, 3, 4.



VIRGINIA CORVA
Α Δ Η

Dupont, Ind.

Glee Club 1, 2, 3; Sec'y 1, Treas. 3; Chapel Choir 2, 3, 4; Sec'y 4; Gamma Sigma Pi 2, 3, 4; Sec'y 4; W. A. A. 1, 2, 3, 4; Sec'y 3, 4; French Club 1, 2, 3; Social Science Club 4.

EMERY GARRIOTT
Σ Φ Ε

Scottsburg, Ind.

Purdue U. 1, 2; Science Club 4; Social Science Club 4.

FARWELL ELLIS
Φ Γ Δ

French Lick, Ind.

DePauw U.; Spanish Club 2, 3; Glee Club 2, 3; Intramurals 2, 3, 4; Go-Getters Club 3; Football Mgr. 2, 3, 4.

ALBERT PLATT
Α Δ Α

Youngstown, Ohio

Student Council 2; Y. M. C. A. 1, 2; Epsilon Staff 3; Science Club 3, 4.



CLAUDE COMMONS
New Washington, Ind.

Dramatic Club 3, 4; Student Council 3, 4.

ELIZABETH ALLEN
Α Δ Η

Chicago, Ill.



LEAFA YOUNG
Θ K N

North Madison, Ind.

Science Club 1, 2, 3, 4; In-
tramurals 1, 2; Bus. Mgr.
Records 2.

ALDENE GARDNER
Π B Φ

Scottsburg, Ind.

I. C. 1; Dramatic Club 3, 4;
Triangle Staff 3; Glee Club 2,
3; Chapel Choir 2; French
Club 2, 3, 4.



HARRY WEIR
Θ K N

Salem, Ind.

Band 1, 2, 3, 4; Science Club
1, 2.

JOHN HOESLE
Charlestown, Ind.

Science Club 1, 2, 3, 4; Stu-
dent Council 4.



LORRAINE KEE
Φ M

Cicero, Ill.

Morton Junior College 1, 2;
Y. W. C. A. 3, 4; French Club
3, Pres. 4; Women's Student
Gov't 4.

ROBERT KELLER
Α Δ Α

Madison, Ind.

Science Club 1, 2, 3, 4; Ger-
man Club 1, 2.



ADELBERT MILLICAN
Θ K N

Madison, Ind.

Varsity Football 1, 3, 4; In-
tramurals 1, 2, 3, 4; Classical
Club 1, 2; Science Club 1, 2;
Social Science Club 2, 3, 4.

JEAN SHEPHERD
Α Δ Η

Dupont, Ind.

W. A. A. 1, 2, 3, 4, Pres. 3;
Chapel Choir 1, 2, 3, 4, Pres.
4; Y. W. C. A. 1; French
Club 2; Class Sec'y 3; Sports
Mgr. W. A. A. 1; Varsity
Soccer, Baseball, Basketball,
Track, Speedball 1, 2.



MAY LOU CONNER
Δ Z

Columbus, Ind.

Franklin College 1, 2, 3;
Social Science Club 4.

WILLIAM D. SHELBY
Φ Γ Δ

Charlestown, Ind.

Dramatic Club 1, 2, 3, 4, Bus.
Mgr. 2; Class Pres. 2; Foot-
ball 1, 2; Spanish Club 1, 2,
3, Pres. 2; Glee Club 1, 2;
Student Council 2, 3, 4; Bus.
Mgr. Triangle 2, 3; Varsity
Tennis 2, 3, 4; Intramurals 1,
2, 3, 4; Gamma Sigma Pi 2,
3, 4; Philal. Union 1; Y. M.
C. A. 1, 2; Science Club 2, 3.



FRITZ CHAPMAN
BΘII

Madison, Ind.

Interfraternity Council 2, 4;
Social Science Club 2; Intramurals 1, 2, 3, 4; Chapel Choir 2, 4; Glee Club 1, 2, 3;
Triangle Staff 1, 4; Student Council 2.

EMILY REA
AΔII

Madison, Ind.

W. A. A. 1, 2, 3, 4; French Club 1, 2; Vice-Pres. Class 1;
Triangle Staff 2; Dramatic Club 1, 2, 3, 4; Pan-Hellenic Council 2, 4, Pres. 3; Varsity Basketball 2; Varsity Soccer 1; Gamma Sigma Pi 1, 2, 3, 4; Alpha Phi Gamma 2, 3, 4.



WILLIAM SMYTHE
ΦΓΔ

Louisville, Ky.

Varsity Tennis 1, 2, 3, 4;
Yell Leader 4; Y. M. C. A. 1, 2, 3, Vice-Pres. 4; Triangle Staff 1; Intramurals 1, 2, 3, 4; German Club 1, 2, 3, 4.

CARLYLE HALL
BΘII

Rising Sun, Ind.

Science Club 2, 3, 4; Student Council 4; Triangle Staff 1, 2;
Revsnak Board Of Control 2.



MARY BLANCHE JACKSON
Hanover, Ind.

Glee Club 1, 2, 2; Orchestra 1, 2, 2; Student Council 2, 4.

MAURICE W. GRASTON
AΔA

DuPont, Ind.

Y. M. C. A. 1, Treas. 2, 3, 4; Glee Club 1, 2; Band 1, 2, 3, 4; Bus. Mgr. 3; Science Club 1, 2; Social Science Club 1, 2, Pres. 4; Varsity Debating 2, 4; Editor '32 Revsnak; Intramurals 1, 2; Gamma Sigma Pi 3, 4; Intramural Debating 4.

CARLETON GREGG
ΘKN

Urbana, Ohio

Detroit U.; Urbana U.; Ohio Northern; Football 2, 4; Basketball 3; Baseball 3, 4; Social Science 3; Science 4; Vice-Pres. Class 4; Interfraternity Council 4; Intramurals 4.

ARTHUR MEISE
ΦΔΘ

Oak Park, Ill.

Purdue 1; Science Club 2; Social Science Club 2; Varsity Basketball 2, 4; Football 2, 3, 4; Intramurals 2, 3, 4.



LEWIS WILLIS
ΘKN

Bedford, Ky.

Biology Lab. Ass't. 5; Intramurals 1, 2, 3, 4; Science Club 1, 2, 3, 4, Pres. 3; Student Council 1, 2, 3, Pres. 4; Band 1, 2, 3, 4; Go-Getters Club 2.

MARY JEAN DRAKE
AΔII

Madison, Ind.

French Club 2; Social Science Club 2.



RONALD BEARD
ΣΦΕ

Topeka, Kan.

U. of Kansas 1, 2, 3; Social
Science Club 4.

MARLON LEMEN
ΟΚΝ

Holton, Ind.

Varsity Basketball 1, 2, 3, 4;
Varsity H. Club; Football 3;
Intramurals 1, 2, 3, 4; Inter-
fraternity Council 4.

NELSON BOSCOURT
ΟΚΝ

Madison, Ind.

Science Club 1, 2, 3, 4; Var-
sity Football 1, 3, 4.

JEAN LEWIS
ΑΔΗ

Madison, Ind.

W. A. A. 1, 3; Dramatic
Club 1, 2, 3, 4; Glee Club
1, 2; Science Club 3, 4;
Social Science Club 3, 4.

DOBOTHY MILES
ΑΔΗ

Madison, Ind.

W. A. A. 1, 2, 2, 4; Science
Club 1; Spanish Club 1, 2,
Sec'y 2; Y. W. C. A. 1, 2, 3,
4; Renewal Staff 3; Gamma
Sigma Pi 2, 3, 4; Varsity
Basketball, Baseball, Volley-
ball, Speedball, Track 1, 2.

MABEL RANNEY
ΑΔΗ

Madison, Ind.

W. A. A. 1, 2; French Club
2; Student Council 1, 2, 3, 4;
Vice-Pres. Class 2; Renewal
Board of Control 2; Y. W.
C. A. Cabinet 2, Vice-Pres. 2,
Pres. 4; Gamma Sigma Pi 2,
4, Pres. 2.



CHARLES BROWNE
ΦΓΔ

Madison, Ind.

WILLARD DAILEY
ΣΦΕ

Danville, Ohio

STELLA FIFTH
ΑΔΗ
Brooksbury, Ind.





JUNIORS



KEITH MALSBARV

EVELYN GARDNER

The Juniors, better than sophomores and less than seniors, find that much of the hard work of college life falls upon them. They are almost on the last lap of their campus career, and so busy in organizing publication staffs, clubs, and working off their majors and minors that they fairly seem to fly about the school. Yet they find time to aid the seniors in subduing the freshmen and in manipulating the campus machinery. They have been a hard-working, purposeful class, and so have more than earned their place in our year-book, second only to the seniors.

Junior class officers this year are Keith Malsbary, President; Howard Lee, Vice-President, Evelyn Gardner, Secretary, and Eller Lutes, Treasurer.

Hanover may look forward to a successful year next fall when the present Juniors assume the position of full-fledged Seniors.

HOWARD LEE

ELLER LUTES



LOREN MARTIN
BOII

Greensburg, Ind.

Triangle Staff 1, 2, 3; Science Club 1, 2, 3; Varsity Debating 2, 3; Y. M. C. A. Cabinet 1, 2, 3; Intramurals 1, 2, 3; French Club 2; *Recess* Staff 2; Pres. Y. M. C. A.

HENRY M. COOMBS
ΦΓΔ

Indianapolis, Ind.

DePaul U. 1; Triangle Editor 2; Adv. Mgr. 2; Band 2.

WILLIAM ULBRICH
ΦΓΔ

South Wilmington, Ill.

German Club 1, Vice-Pres. 2, 3; Triangle Staff 2, 3; Intramurals 1, 2, 3; Science Club 1, 2, 3; Jr. Mgr. Basketball 2.

MARY JO KRUMMEL
ΔΦ

Vevey, Ind.

DePaul U. 1; Social Science Club Sec'y 2; Y. W. C. A. 2, 3; French Club 2, 3; Gosselin Club 2.

HAROLD MALONE
OKN

Borden, Ind.

Recess Board Of Control 2; Science Club 1, 2, 3; Intramurals 1, 2, 3; Band 1, 2; Student Council 1, 2, 2.

JAMES SNYDER
ΦΓΔ

Ashland, Ky.

Alpha Phi Gamma 2, 3; Gamma Sigma Pi 2; Triangle Staff 1, Bus. Mgr. 2; Spanish Club 1, Pres. 2; Dramatic Club 1, 2, 3; Social Science Club 2; Science Club 1; Student Council 2, 3; Intramurals 1, 2; Y. M. C. A. Cabinet 2, 3.

EVERETT CARLSON
ΦΔΘ

Berwyn, Ill.

Junior Football Mgr.; Social Science Club 2; Morton Junior College 1, 2.

MARY ALICE OWINGS
ΦM

Vevey, Ind.

Y. W. C. A. 1, 2, 3; W. A. A. 1, 2; Science Club 1, 2, 3; Social Science Club 1, 2; French Club 1, 2; Varsity Hockey 2, 3, Baseball, Volleyball 2.

KEITH MALSBARY
BOII

Lafayette, Ind.

Spanish Club 1, Pres. 2; Triangle Staff 2; *Recess* Board Of Control 2; Intramurals 1, 2, 3; Tennis 1, 2, 3; Basketball 2; Interfraternity Council 2; Glee Club 1; Intramural Board 2.

WILLIAM FAULDS
BOII

Cincinnati, Ohio

German Club 1, Pres. 2, 3; Y. M. C. A. 1, Cabinet 2, Pres. 2; Social Science Club 2; Editor-in-Chief '33 *Recess*; Yell Leader 1, 2; Intramurals 1, 2, 3; Sec'y State "Y" 2.

BERNARD CORSON
ΦΔΘ

Berwyn, Ill.

Morton Junior College 1, 2; Adv. and Bus. Mgr. Triangle 2; Social Science Club 2; Football 2; Dramatic Club 2; Intramurals 2.

MILDRED MCKIM
Laconia, Ind.

Y. W. C. A. 1, 2, 3; Social Science Club 2.





JOHN D. FOSTER

B O II

Attica, Ind.

Glee Club 1, 2; Science Club 1, 2, 3; Intramurals, 1, 2, 3; Student Council 2, 3; Editor 22-23 *Handbook*; *Triangle* Staff 3; Band 1, 2; Y. M. C. A. 1, 2, 3.



KELSO MYERS

A X O

Wabash, Ind.

Purdue U. 1, 2; Dramatic Club 3; Social Science Club 3; *Recess* Associate Editor 3; Y. W. C. A. 2.



DONALD R. MOYSEY

Φ Δ O

Berwyn, Ill.

Morton Junior College 1, 2; Intramurals 3; Social Science Club 2.



WILLIAM WARN

O K N

Milan, Ind.

Intramurals 1, 2, 3; Science Club 1, 2, 3; Baseball 2, 3.



GEORGE BURKERT

B O II

Indianapolis, Ind.

Butler U. 1, 2; Tennis 3; Intramurals 3; Alpha Delta Sigma; Kappa Kappa Psi.



MARJORIE NIGHBERT

A Δ II

Hanover, Ind.

French Club 1, 2, 3; Glee Club 1, 2; Chapel Choir 2, 3; Science Club 1, 2.



DILLON HERZER

Φ Δ O

Garrett, Ind.

Intramurals 1, 2, 3; Football 2, 3; Basketball 1, 2, 3; Science Club 1, 2, 3.



CLIFFORD ADAMS

A Δ A

Rockville

Science Club 1, 2, 3; Social Science Club 1, 2, 3; Y. M. C. A. 1, 2, 3; Student Council 1, 2, 3.



ELLER LUTES

A Δ A

Muncie, Ind.

Y. M. C. A. Cabinet 1, 2, 3; Science Club 1, 2, 3; Chemistry Lab. Ass't 2, 3; Student Council 2, 3; Delta Epsilon.



ALICE VAUGHN CONNER

New Albany, Ind.

Recess Staff 3; *Triangle* Staff 2, 3; French Club 3; Randolph Mason 1; U. of Louisville 2.



LAWRENCE EVANS

O K N

Columbus, Ind.

Student Council 1, 2, 3; *Recess* Board Of Control 3; Intramurals 1, 2, 3; Social Science Club 3; Y. M. C. A. Cabinet 3; *Triangle* Staff 1, 2, 3; Publicity Director 2.



JOSEPH MAZIEKAS

Φ Δ O

Westville, Ill.

Football 1, 2, 3; Basketball 1, 2; Intramurals 1, 2, 3; Varsity H Club 1, 2, 3; Social Science Club 1, 2, 3; Science Club 1, 2; Intramural Board 2.

CLARK TRUESDALE
B O II

Hanover, Ind.
Maryville College 1; Intramural Athletics 2, 3; German Club 2.

MARGARET LEE
Hanover, Ind.
Social Science Club 1, 2.



ALMON HARMON
Lexington, Ind.
Science Club 1, 2, 3.

HILBERT COFIELD
Φ Γ Δ
Madison, Ind.

Spanish Club 1, Pres. 2; Men's Glee Club 2; Student Council 2, 3; Varsity Debate 1, 3; Triangle Staff 1, 2; Bus. Mgr. *Reensah* 2.



MARY LOU CLARK
Φ M
Ladoga, Ind.
Reensah Staff 3; Women's Athletics 1, 2, 3; Women's Student Gov't Assn.; Triangle Staff 2; Student Council 2, 3; Y. W. C. A. 1, 2, 3; Social Science Club 2.

BERNICE TURNER
Madison, Ind.



JOSE FARFAN
Peru, South America
Social Science Club 4.

MORRIS HORTON
Hanover, Ind.



EARL THURSON
Φ Δ Θ
Berwyn, Ill.
Martin Junior College 1, 2; Football 3, 4; Baseball 3, 4; Varsity H 3, 4; Intramural Athletics 3, 4.

HORACE RANDELL
B O II
Connersville, Ind.
Glee Club 1, 2, 3; Chapel Choir 1, 2, 3, Bus. Mgr. 2; German Club 1, 2; Band 1, 2; Treas. 2; Triangle 2, 3.



EVELYN GARDNER
Bennington, Ind.
Y. W. C. A. 1, 2, 3; Fresh Club 1, 2, 3; W. A. A. 1, 2, 3; Varsity Soccer, Volleyball, Baseball 1, 2, 3.

VIRGINIA LEMEN
Hanover, Ind.
Y. W. C. A. 1, 2, 3; Science Club 1, 2.





FRANK MENOZI

Φ Γ Δ

Gardner, Ill.

Basketball 1, 2, 3; Football 2; Intramural Athletics 1, 2, 3; Varsity H 1, 2, 3; Science Club 1, 2, 3.

DOROTHY ZOE HENDRON

Κ Κ Γ

Bloomfield, Ind.

Indiana U. 1, 2, 3.



LOWELL ANDERSON

Φ Δ Θ

Berwyn, Ill.

Martin Junior College 1, 2; Football 3; Intramural Athletics 3.

LAWRENCE PRATHER

Θ Κ Ν

Charlestown, Ind.

Intramural Athletics 1, 2, 3; Science Club 1, 2, 3; Go-Getters Club 2; Football 1, 2.



MARY ELLEN COOPER

Δ Δ Η

Clarksburg, Ind.

JULIA CLARK

Bloomfield, Ind.



HOWARD LEE

Hanover, Ind.

Class Vice-Pres. 2; Class Treas. 2; Science Club 1, 2; Student Council 1, 2, 3.

CHARLES EARNSHAW

Θ Κ Ν

Okeana, Ohio

Miami U. 1; Football 2, 3; Baseball 2, 3; Intramural Athletics 2, 3; Basketball 2; Interfraternity Council 2.



NATHAN WILSON

Deputy, Ind.

Science Club 1, 2, 3; Intramural Athletics 1, 2, 3.

FORREST COUCH

Φ Γ Δ

Cincinnati, Ohio

Football 1, 2; Chapel Choir 2, 3; Band 1, 2, 3; French Club 1, Treas. 2; Science Club 1, 2; Go-Getters Club 2; Glee Club 1; Resonant Staff 2.



JOHN GWIN

Φ Γ Δ

Connersville, Ind.

Football 1, 2, 3; Basketball 1, 2, 3; Varsity H 1, 2, 3; Science Club 3; Resonant Staff 3; Interclass Sports 1, 2, 3; Interfraternity Council 2, 3.

CONRAD YOUNG

Carrollton, Ky.

Science Club 1, 2, 3; Social Science Club 1, 2.



SOPHOMORES



FLOYD NEERIEMER



MARY SHOOK



RUTH CLARK



FRANCIS JOHNSON

As soon as the Sophomores mingle with the freshies in one grand free for all at the first of the year, they immediately assume the responsibility of making these very Rhinies as good sophomores as they themselves are. There are many hilarious (to all but the freshmen) sessions at the campus gates at which the sophomores give their underlings reminders concerning such matters as freshman caps and matches. In addition, the sophomores fill a distinct place on the campus. Their natural ability, combined with the size of their class, makes them a valuable aid to any project and a force with which to reckon. They have many offices and positions of responsibility and doubtlessly will continue in the years to come in their valuable place to the college.

Their officers are, Floyd Neeriemer, President; Mary Shook, Vice-President; Ruth Clark, Secretary, and Francis Johnson, Treasurer.

LOSCHÉ
MORRELL
ALLEN



CANFIELD
RANEY
SCALES



MARTIN
GILLESPIE
MANNIX



THURMAN
HUTCHINSON
DAVIS



BLANKENSHIP
HUMPHREY
SHELBY



FENWICK
SNYDER
SHINE





THOMSON
HINDS
KELSEY



NEERIEMER
SMITH
SCHONFELD



HUGHES
GUENTHER
ROSS



THURMAN
HALE
WILLIAMS



JACKSON
DAVIS
HART



LEMEN
COFFEY
STUCKEY

PELTZER
CLARK
DUNCAN



HOKE
ELLIS
BOYD



MINER
HUGHES
MAKOWSKY



BRAUN
MANN
HINSHAW



HANNAH
SHOOK
JOHNSON



CRIM
FLICK
ROGERS





WELCH
SHANKLIN
McKEAND



STINES
PAVEY
LASHER



COMPTON
WILLIAMS
SHAW



YOUNG
McKAY
WEIR



COLLIER
MILLICAN
BREEDING



ALLEN
GRAVES
KVETINSKAS

HUNTER
RISK
BROWN



HARVEY
MANNIX
SIEGLITZ



CARPENTER
BRIGGS
SMITH



WICHMANN
GRALER
FOSTER



MATHEWS
HASKETT
PRICE



GUENTHER
CALHOUN
BOWMAN







FRESHMEN



DUDLEY HULSE



GEORGE F. WARN



ANNE ROBERTSON



ROBERT JACOBS

Last we must mention the freshmen. They are the new-comers, the greenies, the rhinies; sum it all up in one word and you have— Freshmen. Yet they have demonstrated their intelligence, their amiability, their capability, and in the years to come we may hope that they will be as good a class as ever Hanover has known. Powerful in numbers, but ignorant of tactics, they descended upon the college, engaged in the virile freshman-sophomore fight; then settled down to studies, green caps with red bills, and the process of making a place for themselves in the campus world.

Leaders for their first year are, Dudley Hulse, President; George F. Warn, Vice-President; Anne Robertson, Secretary, and Robert Jacobs, Treasurer. As we said for the seniors, so for the freshmen; "Here's to them!" May they grow, prosper, and in turn prosper their school.

THOMSON
HOUGH
FOSTER
PENN



FRIEDERSDORF
HINES
GREY
ANDERSON



SMITH
BERSCH
HULSE
TAFT



CLARK
BRAMEIER
SCOTT
HARRIS



CROOKE
ESPEY
SMITH, R.
DAVIS



JACOBS, W.
TAGGART
GOHMAN
MOSER



MCCULLOCH
YOUNG
SMITH, B.
FEWELL



REGAN
FURNISH
FRANKLIN, E.
HOLCROFT





OTTER
WHALLON
HEALY
RADY



RITZMANN
SWENGEL
ROBERTSON
DEMAREE



PARK
HUMPHREY
BUTLER
HOLSAPPLE



FIRTH
FRANKLIN, E.
DENTON
GILLILAND



WILLIS
MCDONALD
WEYMOUTH
JACOB, R.



THOMAS
RAYMOND
ADAMS
CALDWELL



MCCONNELL
REA
MURPHY
BRUCE



FOX
BECK
THORNTON
JACOBS, R.

WIMER
MARTIN
BURKHARDT
SNYDER



DAVIS, H.
GILL
MORGAN
MAHAN



PERIN
NORCROSS
BAKER
MERZ



MEDCALF
MARSHALL
HASKETT
STUTSMAN



CLARK, J.
YOUNG
GRAY
HOLMES



WARN, F.
SHACKLETTE
HAMBLEN
WHEELER



BAIRD, L.
HEICHELBECH
HANCOCK
TRUESDALE



MONROE
AUXIER
WILEY
PHIPPS





PICKETT
WORRALL
RHODES



GRIMES
BROOKS
BECKER



RINE
MCINTOSH, J.
BRIDGINS



SCHULER
MCINTOSH, B.
DENTON



HOEHN
ELLIOTT
BILLINGSLEY



RANKIN
WALDON
HARGIT



ACTIVITIES



HENRY COOMBS

JAMES SNYDER

Triangle

The Triangle is the weekly news publication of the student body, portraying news and events of interest to the Hanover student. The Journalism Department headed by Miss Mary Louise Fitton, is in charge of the paper.

The Triangle has been a great success this year, due to the splendid work of the editor and business manager, Henry M. Coombs and James Snyder, with complete cooperation from their staffs.

TRIANGLE STAFF





Student Council

The Student Council is the governing body of Hanover students, its policy being a "Bigger and Better Hanover". It is composed of representatives of all organizations on the campus with Dr. R. M. Kutz as sponsor and Lewis Willis as President. One of the accomplishments of the organization this year was the purchase of new uniforms for the band.



LEWIS WILLIS

Dramatic Club

The Dramatic Club, under the leadership of Miss Kate Andrews, sponsors two plays each year. The first semester play this year was "Under Cover".

Membership in the club is voted on after tryouts have been held, the number of members being limited to thirty. Charles Butler is President and Herman Allen is Business Manager.



CHARLES BUTLER

Educational Club

The Educational Club is open to all students in the Education Department. The club meets regularly and holds some very interesting meetings. All of the members take part in some program during the year. It is under the leadership of Miss Anna Marie Fisher and is presided over by Carrol Thurman.



CARROL THURMAN



Classical Club

The Classical Club was formed late this year by Professor Hower, professor of Ancient Languages, and several students interested in the Classics.

The club holds regular meetings and subjects of interest to the student of classical times are presented. Slides have been shown of Rome and of Athens accompanied by talks on the features of interest in each of these.

The organization is open to any student showing an interest in the men and matters of antiquity.

The president of the organization is Lewis Thomas and the Faculty Adviser is Professor Hower.



LEWIS THOMAS

Gamma Sigma Pi

Gamma Sigma Pi is a local honorary scholastic fraternity which was founded on the Campus in 1926. Its membership is open to all students making a two-point five average two out of three consecutive semesters and not falling below "B" in any subject.



GLADYS GELVIN

Independent Women

This year the girls on the campus who were without fraternity affiliations decided to form an organization and to become prominent on the campus with their group. The organization was formed and Evelyn Gardner was elected as president for the year.

This has proved to be one of the most lively organizations on the campus and the girls have made a name for their group. They have presented programs in Chapel and staged parties for the benefit of the unorganized women. Meetings are held regularly.



EVELYN GARDNER



Varsity Debate Team

The Varsity Debating season started with the tournament at North Manchester, late in February. Eighty-two teams, from thirty-two schools, took part. Hanover was represented there by its two teams, with alternates. Maurice Graston was captain of the Affirmative, and was supported by Ruth Smith, Lewis Thomas, and William Graler. Hilbert Cofield had charge of the Negative, supported by Loren Martin, Herman Allen, and Evelyn Crim.

The final record, as chalked up in victories and defeats is mixed. After a few victories at the tournament, two debates were dropped to Manchester on the home platform. At Terre Haute, our Negative lost to Rose Poly. Then the tide turned, and we defeated in succession Earlham, Rose Poly, and Anderson twice, once at home, and again on their platform.

Two of Hanover's debaters, Maurice Graston and Lewis Thomas debated with equal facility on both teams.

All in all, the season ended happily for all concerned.

Freshman Debaters

This is the second year that the English department under the direction of Professor Conklin, has sponsored the freshman debates. These debates have proved a valuable means of selecting varsity material.

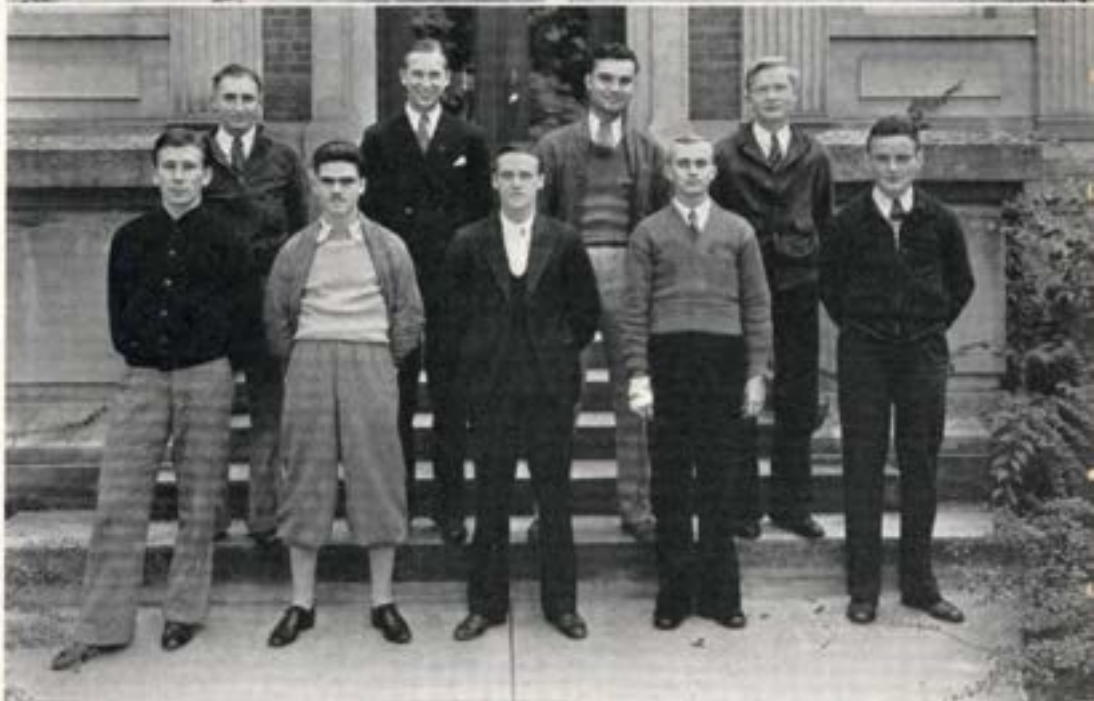
Eight teams were in competition for the coveted freshman trophy this year. Each organization and each of the independent groups were represented in this tournament.

The members of the advanced debating class acted as coaches for the various teams. Enthusiasm ran high not only from the debaters standpoint but also from the coaching angle.

This year the Beta Theta Pi freshman team won the silver loving cup signifying debating supremacy. Arthur Whallon, Burkert Friedersdorf, and Lewis Thomas composed the winning team. They were most ably coached by Herman Allen. The Phi Mu team coached by William Graler was defeated in the final contest of the tournament.

Intramural Debaters

This year the Intramural Debate Trophy was again in circulation. The debaters produced some very fine material on the question, "Resolved, that the United States should cancel all War Debts owing to her, contracted by the Allied and Central Powers." The debates, under the able chairmanship of Prof. Dizmang, were won by the Independent Men.



Band

The band is an organization of musically inclined students who play band instruments. It is under the able direction of Prof. Poland. This year the Student Council voted an appropriation for band uniforms for all of the members. The President of the organization is Forrest Couch.



FORREST COUCH

Y. M. C. A. Cabinet

The Y. M. C. A. Cabinet is the governing body of the Young Men's Student Christian Association, composed of upperclassmen. This year the cabinet was very active in the celebration of the fiftieth anniversary of the founding of the "Y" in 1883. The faculty advisor is Prof. Leo V. Barker and the President is William Faulds.



WILLIAM FAULDS

Y. W. C. A. Cabinet

The Young Women's Christian Association in Hanover is composed of the women under the direction and guidance of the "Y" Cabinet. Many projects are arranged and carried out each year by the organization. Perhaps the best is the May Day celebration. The President of the organization is Mabel K. Raney.



MABEL RANEY



Science Club

The Science Club is open to all students enrolled in the Science Department. Its meetings are held regularly and are usually in charge of students. At various times during the year, the faculty members of the Science Department conduct experiments at the meetings. The President of the club is Lewis Jacob.



LEWIS JACOB

Chapel Choir

The Chapel Choir is an organization of men and women, membership being won through competitive tryouts. This year the choir made several trips to the neighboring towns, singing in some of the churches and official gatherings. The choir is under the supervision and direction of Prof. Maxwell Poland, with Jean Shepherd as its President.



JEAN SHEPHERD

Social Science Club

The Social Science Club has been organized this year and its membership is open only to upperclassmen upon invitation. The meetings were very interesting this year, various members talking upon current problems of thought. The club has as four of its members, Professors Mark Entorf, Leo V. Barker, Oscar K. Dizmang, and Russell H. Seibert. The President is Maurice Graston.



MAURICE GRASTON



Die Deutsche Gesellschaft

Die Deutsche Gesellschaft was founded at Hanover by Miss Garten a few years ago. Its success has been great and it is an important organization on the campus. Membership is open to all students in the German Department making an average of "B" each semester. The club presents a Christmas Play in the Chapel every year. The President is William Faulds.



WILLIAM FAULDS

La Sociedad Espanola

The Spanish Club is open to all students in the Spanish Department. It has had some very interesting meetings this year, besides presenting a Spanish play in the College Chapel. The club is under the direction of Miss Marie Garten, and Herman Allen is its President.



HERMAN ALLEN

Le Cercle Francais

The French Club was organized several years ago on the Hanover campus to enable the students in the French Department to cultivate the conversational aspect of the language. The membership is limited to thirty and is open to students showing a vital interest in the French language. Miss Jean Anderson is the sponsor and Lorraine Kee the President.



LORRAINE KEE



WILLIAM FAULDS

HILBERT COFIELD

Revonah Staff

The *Revonah* is the annual publication of the Junior Class of Hanover College. The supreme council is the *Revonah* Board of Control consisting of three Faculty members and four students.

The Board elects the Editor and the Business Manager who in turn appoint their staff with the approval of the Board.

The success of this annual portraying the life and events in the life of Hanover College for the year 1932-33, is due to the excellent work of the Staff and to the valued advice of Professor Oscar K. Dizmang, the Faculty Adviser.

REVONAH STAFF





GREEKS



EMILY REA

GRACE NIXON

JOY KELSEY

MARY LOU CLARK

Pan-Hellenic Council

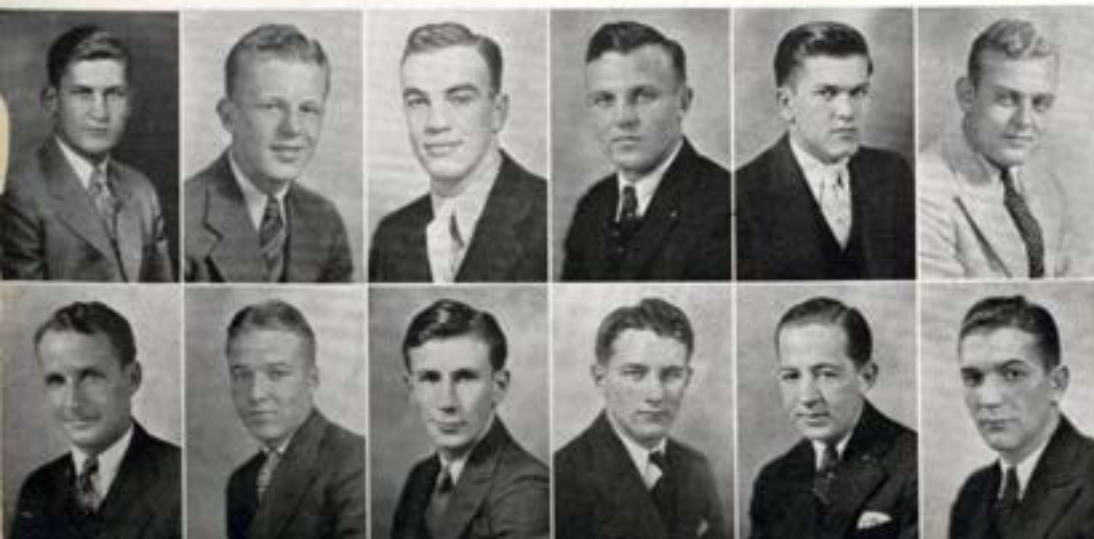
The Pan-Hellenic Council is an organization of representatives from the women's Greek letter societies on the campus, chosen to act as their governing body for all fraternal relations. Grace Nixon, President.

Interfraternity Council

The Interfraternity Council is an organization of representatives from all the men's Greek letter societies on the campus, which acts as their governing body for all fraternal relations. Frank Razavich, President.

Row One: John Gwin, Fritz Chapman, Charles Earnshaw, Frank Razavich, William Ulbrich, Vincent Guenther.

Row Two: Carleton Gregg, Keith Malsbary, Herman Allen, Joe Mazickas, Forrest Bemish, Mahlon Lemen.





Beta Theta Pi

FOUNDED AT MIAMI UNIVERSITY 1839

Colors: Pink and Blue

Flower: American Beauty Rose

IOTA CHAPTER

Installed 1853

COLUMN ONE

Fritz Chapman, Madison, Ind. '33
William Faulds, Cincinnati, Ohio, '34
Paul Martin, Santa Claus, Ind. '36
Elbert Lasher, Seymour, Ind. '35
William Ritzmann, Lawrenceburg, Ind. '36
Raymond Hinds, Salem, Ind. '35

COLUMN TWO

Robert Kunkler, Indianapolis, Ind. '33
Keith Malsbary, Lafayette, Ind. '34
James Shanklin, Hammond, Ind. '35
Worth Sieglitz, Vevay, Ind. '35
Vern Hutchinson, Indianapolis, Ind. '35
Lewis Thomas, Detroit, Mich. '36

COLUMN THREE

Horace Ransdell, Connersville, Ind. '34
John Foster, Attica, Ind. '34
Roger Williams, Greensburg, Ind. '35
Orville Mann, New Albany, Ind. '35
Arthur Whallon, Richmond, Ind. '36
Hugh Espey, Rising Sun, Ind. '36

COLUMN FOUR

Joseph Judkins, Hanover, Ind. '33
Clark Truesdale, Hanover, Ind. '34
Harry Becker, Booneville, Ind. '36
Bruno Kvetinskas, Westville, Ill. '35
Dallas Gilliland, Greensburg, Ind. '36
Vincent Young, Osgood, Ind. '35

COLUMN FIVE

Carlyle Hall, Rising Sun, Ind. '33
Loren Martin, Greensburg, Ind. '34
Herman Allen, Kokomo, Ind. '35
George Burkert, Indianapolis, Ind. '34
Burkert Friedersdorf, Madison, Ind. '36
Edward Billingsley, Rising Sun, Ind. '36



Beta Theta Pi came to the Hanover campus in the year 1853, overcoming the resistance against Greek organizations in 1855. The fraternity has contributed many prominent men to the success of Hanover and some of its alumni are world-famous. It claims as one of its most distinguished members in Hanover life, Dr. John Finley Crowe, the founder of the college.





Phi Gamma Delta

FOUNDED AT WASHINGTON AND JEFFERSON COLLEGE 1840

Color: Royal Purple
Flower: Purple Clematis

TAU CHAPTER
Installed 1864

MEMBER ON FACULTY
HENRY R. BURGER

ROW ONE

Daniel McNulty, So. Wilmington, Ill. '33
William Smythe, Louisville, Ky. '33
Forrest Couch, Cincinnati, O. '34
Randolph Shelby, Charlestown, Ind. '35
Buford Mannix, Charlestown, Ind. '35
Russel McDonald, Hanover, Ind. '36

ROW TWO

William D. Shelby, Charlestown, Ind. '33
Farwell Ellis, French Lick, Ind. '33
Henry Coombs, Indianapolis, Ind. '34
Clayton Snyder, Hanover, Ind. '35
William Ellis, French Lick, Ind. '35
John Caldwell, Terre Haute, Ind. '35

ROW THREE

Forrest Bemish, Butlerville, Ind. '33
Hilbert Cofield, Madison, Ind. '34
John Gwin, Connersville, Ind. '34
Harold Losche, Indianapolis, Ind. '35
William Clark, Seymour, Ind. '36
Mark Butler, Milton, Ky. '36

ROW FOUR

James Chvatal, Cicero, Ill. '33
William Ulbrich, So. Wilmington, Ill. '34
Frank Menozi, Gardner, Ill. '34
Richard Williams, Canton, O. '35
Max Healy, Indianapolis, Ind. '36
Jacob Bersch, Madison, Ind. '36

NOT IN PICTURE

William Fields, Bloomfield, Ind. '35
Dudley Hulse, Greenwood, Ind. '34
Ralph Holmes, Chicago, Ill. '35
Charles Hutchings, Indianapolis, Ind. '36
Charles Brown, Madison, Ind. '33
Edward Claxton, French Lick, Ind. '34

Kenneth Owen, West Baden, Ind. '34
Wilbur Gill, New Albany, Ind. '35
Robert Graham, Indianapolis, Ind. '36
Langdon Gueotal, Indianapolis, Ind. '36
Bernard Smith, Winchester, Ind. '36



The second fraternity to be installed on the Hanover Campus was Phi Gamma Delta in the year 1864. The quality of men turned out by this chapter, Tau, is shown by its alumni as well as by its actives of today.

Two of these alumni are: Thomas C. Moffet and John B. Allison. Forrest Bemish, a senior has just retired from the office of Vice-President of the Indiana State Interfraternity Council.





Phi Delta Theta

FOUNDED AT MIAMI UNIVERSITY 1848

Colors: Argent and Azure

Flower: White Carnation

INDIANA EPSILON CHAPTER

Installed 1868

TOP ROW—Left to Right

Dillon Dorrell, Rising Sun, Ind. '33
Frank Razavich, Westville, Ill. '33
Earl Thureson, Berwyn, Ill. '34
Robert Cooper, Henryville, Ind. '33
Arthur Otto Meese, Oak Park, Ill. '33

ROW ONE

Charles Butler, Columbus, Ind. '33
Everett Carlson, Berwyn, Ill. '34
Wesley Pelzer, Oak Park, Ill. '35
Gordon Hough, Oak Park, Ill. '36

ROW TWO

Charles Thayer, Berwyn, Ill. '33
James Snyder, Ashland, Ky. '34
Robert Schuler, Henryville, Ind. '35
John Harvey, Zionsville, Ind. '35

ROW THREE

Donald Moysey, Berwyn, Ill. '34
Bernard Corson, Berwyn, Ill. '34
Gordon Rancy, Jeffersonville, Ind. '35
Jack Firth, Madison, Ind. '36

ROW FOUR

Joe Maziekas, Westville, Ill. '34
Vincent Guenther, Jeffersonville, Ind. '35
William Makowsky, Sellersburg, Ind. '35
Emerson Weymouth, Lagrange, Ill. '36

BOTTOM ROW—Left to Right

Hendon Harris, Jr., Madison, Ind. '36
Eddie Anderson, Columbus, Ohio, '36
Robert Smith, Southbend, Ind. '36
Harry Regan, Sellersburg, Ind. '36
Lowell Anderson, Berwyn, Ill. '34

NOT IN PICTURE

James Corkey, Logansport, Ind. '35
Dillon Herzer, Garrett, Ind. '34
Schuler Baird, Jeffersonville, Ind. '36
Cleo Baker, Rising Sun, Ind. '36
Paul Stines, Westville, Ill. '35
Francis Warn, Milan, Ind. '35



Indiana Epsilon of Phi Delta Theta was a newcomer to the campus in 1868. Its existence on the campus has been characterized by the number of athletes it has produced on Hanover's athletic teams. Two of its most prominent alumni are: Judge Taggart, Jeffersonville, Indiana and Charles Evans.





Theta Kappa Nu

FOUNDED AT DRURY COLLEGE 1924

Colors: Crimson, Argent, and Sable

Flower: White Rose

INDIANA ALPHA CHAPTER

Installed 1924

ROW ONE

Harry Weir, Salem, Ind. '33
Mahlon Lemen, Holton, Ind. '33
Harold Malone, Henryville, Ind. '34
John Blankenship, Indianapolis, Ind. '35
Adelbert Millican, Madison, Ind. '33

ROW TWO

Leafa Young, North Madison, Ind. '33
Lawrence Evans, Columbus, Ind. '34
Carleton Gregg, Urbana, Ohio '33
Robert Foster, Indianapolis, Ind. '36
David Fox, Indianapolis, Ind. '36

ROW THREE

Lewis Jacob, Guilford, Ind. '33
Lawrence Prather, Charlestown, Ind. '34
Robert Millican, Madison, Ind. '35
Charles Earnshaw, Okeana, Ohio '34
Robert Jacobs, Indianapolis, Ind. '36

BOTTOM ROW—Left to Right

Lewis Willis, Bedford, Ky. '33
Nelson Boicourt, Madison, Ind. '33
Walter Martin, New Salisbury, Ind. '35
Charles Stuckey, Thorntown, Ind. '35

NOT IN PICTURE

William Warn, Milan, Ind. '34
William Graler, Cincinnati, Ohio '35
Harold Denton, Butlerville, Ind. '35
Harold Flick, Butlerville, Ind. '35
Gerald Miner, Scottsburg, Ind. '35
Edward Boone, Shanghai, China, '35
Donald Medcalf, Dale, Ind. '36
Burgess Boone, Shanghai, China '36



Theta Kappa Nu has been coming to the front steadily since its advent on the campus in 1924. The members of the fraternity are prominent in all extra-curricular activities. Indiana Alpha chapter has produced some fine athletics since its beginning, and its alumni are gaining recognition in the business world.





Alpha Delta Pi

FOUNDED AT WESLEYAN COLLEGE 1851

Colors: Blue and White

Flower: Violet

PHI CHAPTER

Installed 1913

ROW ONE

Jean Shepherd, Dupont, Ind. '33
Mary E. McKeand, Madison, Ind. '35
Mary Welch, Vevay, Ind. '35
Margaret Wiley, Scottsburg, Ind. '36
Sarah Rankin, Brownstown, Ind. '36
Martha Ann Hamblen, Winchester, Ind. '36
Janice Clark, Winchester, Ind. '36
Polly Gill, New Albany, Ind. '36

ROW TWO

Virginia Corya, Dupont, Ind. '33
Emily Rea, Madison, Ind. '33
Marjorie Nighbert, Hanover, Ind.
Caroline McKay, Brooksbury, Ind. '35
Martha Carpenter, Mitchell, Ind. '35
Mary C. Truesdale, Hanover, Ind. '36
Ella Gohman, New Albany, Ind. '36
Annette Fewell, Madison, Ind. '36

ROW THREE

Elizabeth Allen, Chicago, Ill. '33
Mary Jean Drake, Madison, Ind. '33
Mary Frances Hale, Shelbyville, Ind. '35
Evelyn Crim, Hanover, Ind. '35
Helen Brooks, Wabash, Ind. '36
Mary Helen Taft, Madison, Ind. '36
Lucile Shacklette, Jeffersontown, Ky. '36
Mary Ellen Cooper, Clarksburg, Ind. '34

ROW FOUR

Mabel Raney, Madison, Ind. '33
Dorothy Miles, Madison, Ind. '33
Joy Kelsey, Rising Sun, Ind. '35
Thelma Ernest, Seymour, Ind. '35
Rosabelle Bridgins, Huntington, Ind. '36
Louise Graves, Georgetown, Ky. '35
Olive Smith, Madison, Ind. '36
Ruth Otter, Madison, Ind. '36

NOT IN PICTURE

Jean Lewis, Madison, Ind. '33
Marthanne Hinshaw, Fortville, Ind. '35
Stella Firth, Brooksbury, Ind. '33
Helen Merz, Cincinnati, O. '36



Phi Chapter of Alpha Delta Pi was installed on the Hanover campus in 1913. Members of the sorority have been prominent in all Hanover activities since its founding. It has the distinction of owning the only sorority house on the campus at the present time.





Phi Mu

FOUNDED AT WESLEYAN COLLEGE 1852

Colors: Rose and White

Flower: Enchantress Carnation

RHO CHAPTER

Installed 1913

ROW ONE

Ruth Clark, Bloomfield, Ind. '35
Louise Pavey, Indianapolis, Ind. '35
Mary McCullough, New Albany, Ind. '36
Elizabeth Baird, Jeffersonville, Ind. '36
Amelia Auxier, Shelbyville, Ind. '36

ROW TWO

Lorraine Kee, Cicero, Ill. '33
Josephine Taggart, Hanover, Ind. '36
Mary Dee Snyder, South Bend, Ind. '36
Evangeline Farrell, Hanover, Ind. '33
Mildred Elliott, South Bend, Ind. '36

ROW THREE

Elizabeth Calhoun, Kokomo, Ind. '35
Dorothy Breeding, Edinburg, Ind. '35
Mary Lou Clark, Ladoga, Ind. '34
Martha Rady, Jeffersonville, Ind. '36
Margaret Penn, Jeffersonville, Ind. '36

ROW FOUR

Margaret Scott, Columbia City, Ind. '36
Mary Alice Owings, Vevay, Ind. '34
Grace Nixon, Portland, Ind. '33
Anne Robertson, Elkhart, Ind. '36
Emily Holmes, Jeffersonville, Ind. '36

NOT IN PICTURE

Thelma Price, Sunman, Ind.
Sarah Henning, Hanover, Ind. '34
Jane Hummel, Kokomo, Ind. '35
Mary Shook, Cincinnati, O. '35
Mona Beery, South Bend, Ind. '36
Marion Marshall, LaPorte, Ind. '36
Ethel Park, Greenville, Ill. '36



Rho Chapter of Phi Mu was founded in Hanover at the same time as Alpha Delta Pi, 1913. Its members have distinguished themselves in all phases of Hanover life, and continue to do so. The sorority is planning to build a chapter house in the near future.

NO CHAPTER HOUSE



Stray Greeks

To the stray Greeks on the campus, we dedicate this page, endeavoring to show them some recognition. Although their organizations have no chapter in Hanover, they are prominent in all college activities.

MAY CONNER
 Δ Z
 Columbus, Ind.

EMERY GARRIOT
 Σ Φ E
 Scottsburg, Ind.

ALDINE GARDNER
 Π Β Φ
 Scottsburg, Ind.

KELSO MYERS
 Α Χ Ω
 Wabash, Ind.

MARY JO KRUMMEL
 Α Φ
 Vevay, Ind.

DOROTHY ZOE HENDREN
 Κ Κ Γ
 Bloomfield, Ind.



ATHLETICS



Coach John M. Van Liew

Coach Van Liew before coming to Hanover was coach at Knox College where he guided his football team to a "Little Nineteen" Championship. He coached the Peruvian athletes for the Olympic Games and is well known in the sport world.

His work in Hanover is appreciated and he has the backing of the entire student body, alumni, and faculty.



"BUD" WEYMOUTH

Yell Hanover



JEAN LEWIS



"BILL" SMYTHE

The Varsity "H" Club

In the fall of 1927, there appeared on the Hanover Campus an organization called the Varsity "H" Club. It was organized by former Coach C. V. Money to foster a better spirit among the letter men and to give them something in common, outside of the sport they were interested in.

Although Coach Money has gone, the organization is still progressing and has added several new members to its rolls this year. Initiation is held in the Spring for the men making letters.

The president of the organization this year is Dan McNulty, a four-year letter man.





FOOTBALL



NEERIEMER, *Center*



RAZAVICH, *Fullback*

Hanover's Red and Blue 1932 Panthers completed the most successful gridiron season that the college has had in recent years, ending the season with five won, three lost and one tied.

A rather ragged beginning was compensated by a brilliant climax. Once the right combination was found, the team swept relentlessly over five opponents for five consecutive triumphs.

Truly it was a great season and did much to put Hanover on the map athletically.

In the first game of the season, a big, fast University of Cincinnati team crushed Hanover 51-0. The reserves of the Queen City aggregation had much to do with the large score.

The Panthers gained essential experience in this game.

MANN, *R. Guard*



BECKER, *R. Tackle*





HAY, R. *Halfback*



THURESON, *Quarterback*

Rose Poly got a break on a blocked kick and won from the Panthers, 7 - 6. A heart-breaking defeat!

The Evansville Purple Aces played inspired football to hold the Panthers to a scoreless tie in the third game of the season.

Then came the DePauw game and Coach Van Liew watched his proteges lead the Methodists for three quarters. However in the final minutes, the Tigers' reserve strength showed itself and after a fine game DePauw won, 13 - 7.

Homecoming was next in order and the Panthers sent a crest-fallen group of once-hopeful warriors back to Earlham on the wrong end of a 12 - 0 score. The Van Liewmen really hit their stride in this game.

STUCKEY, R. *End*



DAILEY, L. *End*





THAYER, R. End



BLANKENSHIP, L. Halfback

Oakland City was the next team to fall victim to the Panthers' prowess. The final score was 26 - 0, in a game in which Hanover's reserves starred.

Danville Normal was the next to take the tumble in a really sensational affair. The teams took turn about scoring, but in the end the Panthers had scored 27 points to Danville's 25.

The Oaks were not satisfied that Hanover was the better team, so the Panthers administered another defeat to them, the score again being 26 - 0.

Thanksgiving Day Charleston Normal College fell beneath the crushing Red and Blue juggernaut, 20 - 0. This was the last game of the season and served as a brilliant finish to the gridiron season.

BOICOURT, Center



STINES, L. Guard





MEESE, *Fullback*



GUENTHER, *Center*

This game marked the end of the college gridiron days for Hanover's seniors, Big Bill Dailey, Frank Razavich, Carleton, Gregg, Lewis Jacob, Nelson Boicourt, Otto Meese, Jimmy Dorrel, and Farwell Ellis, senior manager, who sang their swan song to the college gridiron on this day.

Hanover experienced a very successful season even although the team had a very poor start. The records of the season show that the players came through in fine style for the glory of their Alma Mater.

Much of the credit for the showing is due to the work of Coach Van Liew or "Van" as he is called. He inspired the men with confidence in their own ability which they showed in the later games.

GWIS, *L. Tackle*



MAZIEKAS, *L. Halfback*



Results of the Season

Hanover	0	University of Cincinnati...	51
Hanover	6	Rose Polytechnic	7
Hanover	0	Evansville	0
Hanover	7	DePauw University	13
Hanover	12	Earlham	0
Hanover	26	Oakland City	0
Hanover	27	Danville Normal	25
Hanover	26	Oakland City	0
Hanover	20	Charleston Normal	0





BASKETBALL



MENOZI

McNULTY

LEMEN

Hanover's Red and Blue hardwood warriors closed the 1932-33 season with six games won and eight lost. The Panthers invaded new territory and kept their colors high in all games.

The season started successfully with the Panthers scoring a 42 - 21 victory over Indiana Law School.

Victory remained with the boys and in the next game with Franklin they registered a brilliant 38 - 30 triumph over the Baptists.

Miami University gave Hanover its first defeat 39 - 27. The game was played at Oxford after a long cold drive from Hanover, the team arriving just before game time.

Danville handed the Panthers a 28 - 26 setback in the next game which was close and fast.

The Panthers then gained favor with Dame Victory by winning from Oakland City 31 - 30, but in the return game Hanover was defeated 30 - 23.

The next game was with Eastern Illinois and after a rough and ready game the locals were vanquished 48 - 42.

DAILEY

GWIN

HERZER





HULSE

SCHULER

MEESE

Joliet could do nothing to stop the powerful Panther offense and as a result was handed a 37 - 23 defeat on their own floor.

Then came the game with Mexico's traveling "Ambassadors of Goodwill", the Falcons. Two games were played, both resulting in victories for Hanover. The first game was won by a 46 - 36 score and the second by 40 - 36.

Danville won another close game. At the gun the score was Danville 33, Hanover 32.

The Purple Aces of Evansville continued to put Hanover further in the red by trouncing the local netmen 27 - 24.

Then came the game with Earlham's high scoring quintet. The Panthers played hard and well but the Tigers were a little too much for them, the final result being 31 - 24 in their favor.

Franklin came back to avenge a previous defeat and left victorious by a 35 - 23 score.

In this the last game of the season, four seniors sang their swan song to college basketball. These men were Dailey, Razavich, McNulty, and Meese.

GILLILAND

RAZAVICH

RANEY



Games and Scores

Hanover 42	Indiana Law	21
Hanover 38	Franklin	30
Hanover 27	Miami	39
Hanover 26	Danville	28
Hanover 31	Oakland City	30
Hanover 23	Oakland City	30
Hanover 42	Eastern Illinois	48
Hanover 37	Joliet	23
Hanover 46	Mexico	36
Hanover 40	Mexico	36
Hanover 32	Danville	33
Hanover 24	Evansville	27
Hanover 24	Earlham	31
Hanover 23	Franklin	35





BASEBALL



"BUD" FISH

"DEMON" STAPLES

"BILL" WARN

The Hanover Baseball team was very successful last year and the men on the team deserve a great deal of credit.

The squad consisted of:

Pitchers — Staples, Harrell, Millican, Warn, Fish and Herzer.

Catchers — Lemen, Goss.

1st Base — Thureson.

2nd Base — Dailey.

Short Stop — Blankenship.

3rd Base — Reid.

Outfielders — Gregg, Menozi, Earnshaw, Denton, Guenther, Middleton, Young, Francke, Allen, Martin and Maziekas.

Professor Hyatt was a great aid in the coaching of this team.

The games and their scores are as follows:

Hanover vs. Danville, at Danville. Score 6 to 4 in favor of Hanover. Pitcher Harrell, catcher Menozi.

Hanover vs. Oakland City, at Madison. Score 15 to 7 in favor of Oakland City. Pitcher Harrell, catcher Lemen.

Hanover vs. N. A. G. U. at N. A. G. U. Score 12 to 7 in favor of Hanover. Pitcher Harrell, catcher Lemen.

"DEL" MILLICAN

"BILL" DAILEY

"CHICK" EARNSHAW





CARLETON GREGG

"RED" LEMEN

FRANK MENOZI

Hanover vs. K. M. I. at K. M. I. Score 7 to 4 in favor of Hanover. Pitchers Warn, Staples, catcher Lemen.

Hanover vs. K. M. I. at Hanover. Score 9 to 4 in favor of Hanover. Pitcher Fish, catcher Lemen.

Hanover vs. Cedarville at Cedarville. Double header. Score 1 to 0 in favor of Hanover. Pitcher Staples, catcher Lemen. Second game. Score 5 to 2 in favor of Hanover. Pitcher Harrell, catcher Lemen.

Hanover vs. Oakland City at Oakland City. Score 10 to 5 in favor of Hanover. Pitcher Harrell, catcher Lemen.

Hanover vs. Franklin at Franklin. 10 innings. Score 4 to 3 in favor of Franklin. Pitcher Staples, catcher Lemen.

Hanover vs. N. A. G. U. at Hanover. Score 7 to 2 in favor of Hanover. Pitcher Staples, catcher Lemen.

Hanover vs. Franklin at Hanover. Score 9 to 1 in favor of Hanover. Pitcher Staples, catcher Lemen.

Hanover vs. Cedarville at Hanover. Double header. Score 10 to 8 in favor of Hanover. Pitchers Warn, Staples, catcher Lemen. Second game, score 7 to 1 in favor of Cedarville. Pitcher Harrell, catcher Menozi.

Hanover vs. Danville at Hanover. 10 innings. Score 7 to 6 in favor of Hanover. Pitcher Staples, catcher Lemen.

"BOB" REED

"JOHNNIE" BLANKENSHIP

EARL THURSON



SEASON TOTAL:

Eleven games won.

Three games lost.

We scored 94 runs to 69 for our opponents. We had an average of 6.7 runs per game.

PITCHERS' RATING:

Staples . . . won 5 lost 1.

Harrell . . . won 4 lost 1.

Fish . . . won 1 lost 0.

Warn . . . won 1 lost 0.

Millican . . . won 0 lost 1.



MINOR AND
WOMEN'S
SPORTS



Varsity Tennis

The Hanover College Tennis Team, coached by Professor Leo Vaughn Barker, had a fairly successful season. The team had several veterans back and they showed up exceptionally well for the short time they had to practice and for the schedule which they had.

The first match was with Indiana State Normal and after a hard fought match, the State boys were victorious. It was a tough one to lose but we took it on the chin with a grin.

Next in order came Oakland City and, having been defeated once, the boys were determined that it should not happen this time. They settled down and took the match from Oakland City. In a return match later in the season, the Oaks came here to avenge their defeat but they went back crestfallen having lost again.

Earlham, the next in line, proved a little too strong and they defeated us in both matches, one here and one there.

In two hard-fought matches with Kentucky Military Institute, the home town boys came off victorious in both, proving the old adage, that a man may be down but he is not out until he is counted out.

In a match at Danville, Kentucky, with Centre College, the opposition proved too strong and too experienced for Hanover and the result was a defeat.

North Vernon Tennis Club then visited Hanover and left with a mark chalked up in the lost column.

The members of the team were: Malsbary, Karnell, Evans, Shelby, Stewart, Smythe, and Taggart.

Four of this team are back this year and from all indications they should form the foundation for a strong team which should be as good as any in the State. Here's hoping.

MALSBARY

SMYTHE

EVANS

SHELBY





Interfraternity Basketball

The Beta Theta Pi Fraternity annexed the coveted interfraternity basketball trophy by defeating the Theta Kappa Nu team in the finals of the tourney.

This trophy is in the form of a plaque and was presented by Russell S. Fitzgibbon of the class of '19, and a member of the Phi Delta Theta Fraternity.

This trophy becomes the permanent possession of the organization winning it three times in succession. To date the Phi Gamma Delta Fraternity has won the trophy twice in succession on two different occasions and the Phi Deltas have performed the same feat on one occasion.

Last year the plaque rested within the halls of Phi Gamma Delta.

Intramural Basketball

The Theta Kappa Nu Fraternity added to their laurels the intramural basketball championship by virtue of their standing at the close of the basketball season.

This combination lost only two games during the season but was run a close second by a fast-advancing Phi Gamma Delta aggregation.

The entire season was featured by overtime games and consistent hard-driving throughout. Practically all scores were small and only a few points marked the gap between victory and defeat.

Flick proved to be the mainstay of the winning team. His cool, reserve manner installed confidence and command among his teammates.





Intramural Volleyball

The Betas gained several points toward the Intramural cup by winning the volleyball championship the past season. It was a hard fight all the way through and the Betas were pressed hard by the Theta Nus and Independents, the decision not being cinched until the final game was played.

The teams were all evenly matched and several stars of former teams were participating. The Betas closed the season undefeated and the Theta Nus lost only two games, to the winners.

Intramural Recreation Ball

The Phi Gamma Delta Fraternity cinched the recreation ball championship by downing a stubborn Independent Nine in the deciding game of the series.

The Independent Crew repeatedly threatened the championship crown throughout the series. The Independents were tied with the winners prior to the final game.

Gwin and Williams, composing the battery for the winners, proved to be the main cogs in the Fiji machine throughout the season. Although there is no trophy in this sport, it is included in the point system toward the coveted intramural trophy.



Miss Viola Mitchell

Those who can remember what the Physical Education Department of Hanover was before Miss Viola Mitchell came six years ago as Director of Physical Education for the Women, are able to appreciate the great thing and development she has brought about. From what was a department in name only she has built up a curriculum of women's sports which has won recognition not only for Hanover, but also for her, personally. In addition to the time and labor she spends in conducting her classes, she

serves as sponsor for the W. A. A. and willingly cooperates in all its functions.



Women's Athletic Association

The Women's Athletic Association is one of the most active clubs on the Hanover campus. There is always something to do for everyone interested in sports or just in a good time. There are picnics, pajama dances, walkouts, banquets, and to climax everything an overnight hike to the beach in the spring. The Association has promoted play days, and it has added its bit to May Day festivities.

The organization owes its success to Miss Viola Mitchell who has been acting as Director of Women's Physical Education for six years. She has been sponsor of the organization during that time. She has organized a splendid curriculum of activities for Hanover girls. For her hard work and devoted service, she deserves a vote of thanks from every girl in Hanover College. For through her leadership, the Women's Athletic Association and the Department of Physical Education for Women has developed and improved.





Volleyball

Volleyball is a funny game. Seven players arrange themselves in a certain formation on each side of an elevated tennis net and proceed to bat an unoffending ball back and forth over this net. Surely there must be quite an element of excitement for the shrieks and screams are almost deafening sometimes. In warm weather the game is played outside, but if the weather happens to be slightly temperamental the net can be stretched across a gymnasium and the game goes merrily on. One of the nice things about volleyball is that it is a little less strenuous than most sports. As in all other sports interclass and intramural tourneys are held and an honorary varsity is chosen.

Hockey

Hockey has an enthusiastic following among Hanover co-eds. Since this is just the second season for this sport the skill of the players is not so great that the hockey stick does not prove rather clumsy and unwieldy at times. But then the shins of every girl are carefully protected so no real harm comes from a few misplaced drives. Like soccer, this game is played by eleven players on a team. The object of the game seems to be to see who can run the fastest down the field, at the same time pushing a little white ball with a peculiar curved club. Then when the race to the goal is won the player attempts to drive the ball through the shin guards of the goal keeper and score a point for her team.





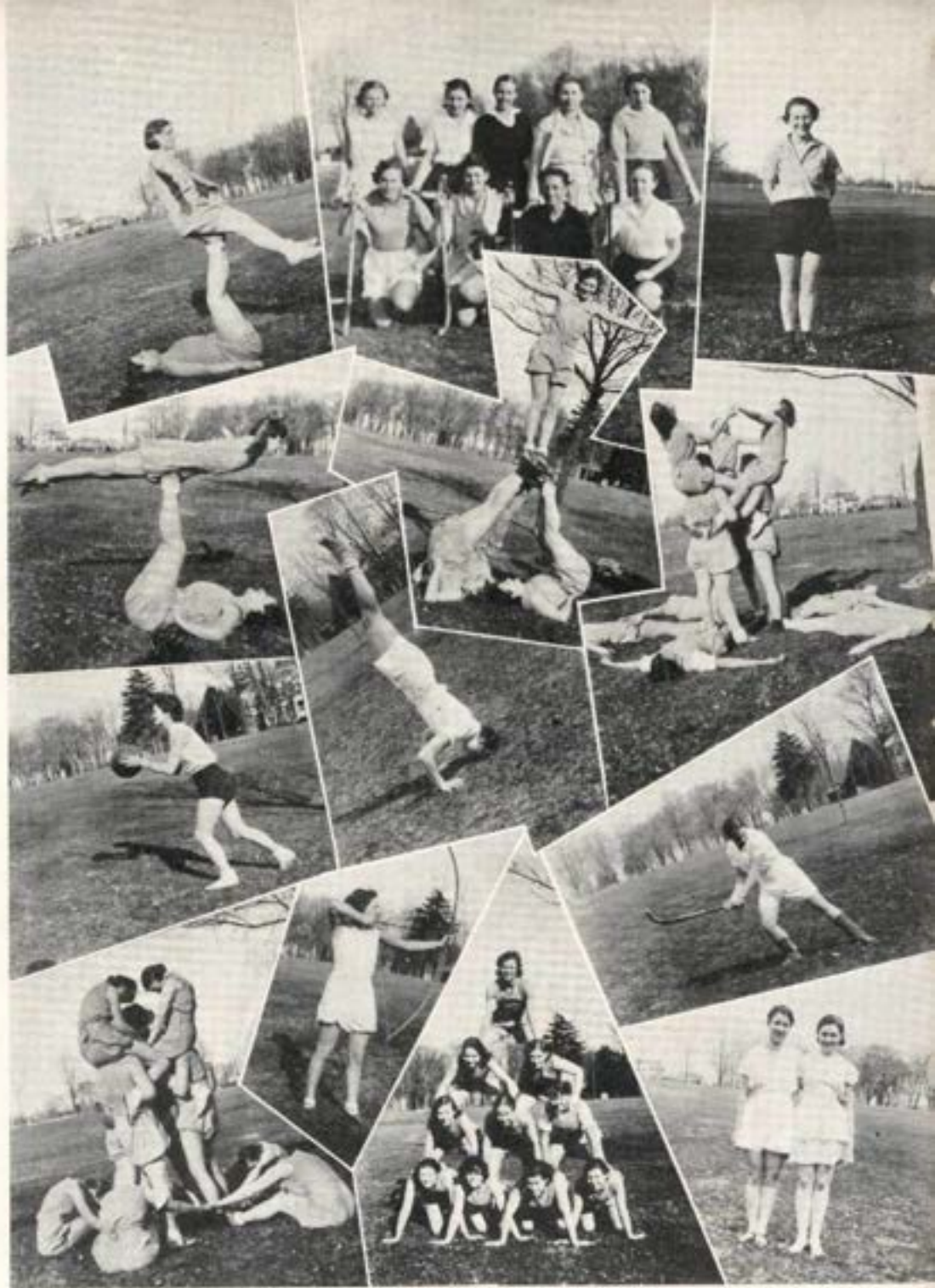
Basketball

Basketball will always reign supreme as king of winter sports. In every girl's heart there is a desire to try her luck on the hardwood. There is a chance to play for everyone. There are beginning classes, intermediate classes, and advanced classes. The competition for a place on the varsity is strong from the beginning of the season to the very last day. The tournaments are well played and well attended. There are two trophies given, interclass and intramural. Beside these two there is a free throw trophy given. This year the varsity team played the University of Louisville girls' varsity. One game was on the Hanover floor and a return game was played at Louisville. The season was brought to a close with a basketball banquet.

Soccer

Soccer is one of the most enjoyed sports on the Hanover campus. What could be a more fitting picture for a crisp fall day than twenty-two "pinney" clad girls chasing an animated pig skin over a comparatively large area. One thing that adds to the interest of this sport is the fact that hands are of no use whatsoever to the players. In fact, many players have expressed the idea that if they were armless, soccer would be very easy to play. It takes real courage to stand patiently with head bowed low while a ball whizzes through the air in direct line with that head. But then the person is only testing the strength of her frontal bone, and is trying to "head" the ball. At the close of the season a varsity is chosen—and who wouldn't be proud to be a player of this jolly game.







FEATURES

Representative Students

Each of us have our ideas of what a college student should be—one who makes a consistently good scholastic record, who participates earnestly and willingly in several worthwhile campus activities, who is well liked by the student body and faculty, who has enough culture and refinement to enable him to be at ease in any situation. Since we realize that a well-rounded individual is too often a rarity on a college campus, we are happy and proud to give recognition to the persons who, in the opinion of their fellow students, are the most truly representative students of Hanover.



JEAN LEWIS



FRITZ CHAPMAN







25336

For Reference

Not to be taken from this room

IND COL
379.77213
REV

For Reference

Not to be taken
from this library

