

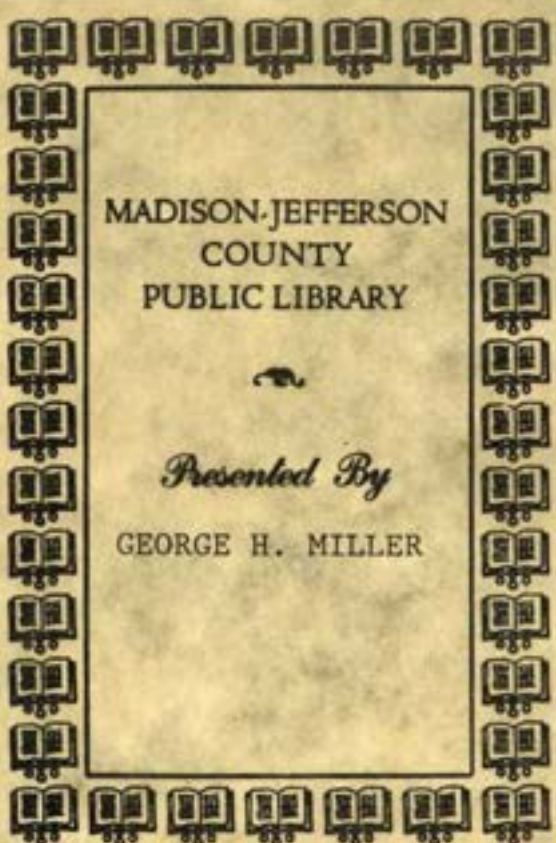
The

Revonah

1994

IND COL
379.77213
REV





MADISON-JEFFERSON
COUNTY
PUBLIC LIBRARY



Presented By

GEORGE H. MILLER

For Reference

Not to be taken from this room




THE
REVONAH

PUBLISHED IN MAY, 1934
HERMAN ALLEN, EDITOR
HEROLD LOSCHE, BUS. MGR.

For Reference

Not to be taken from this room

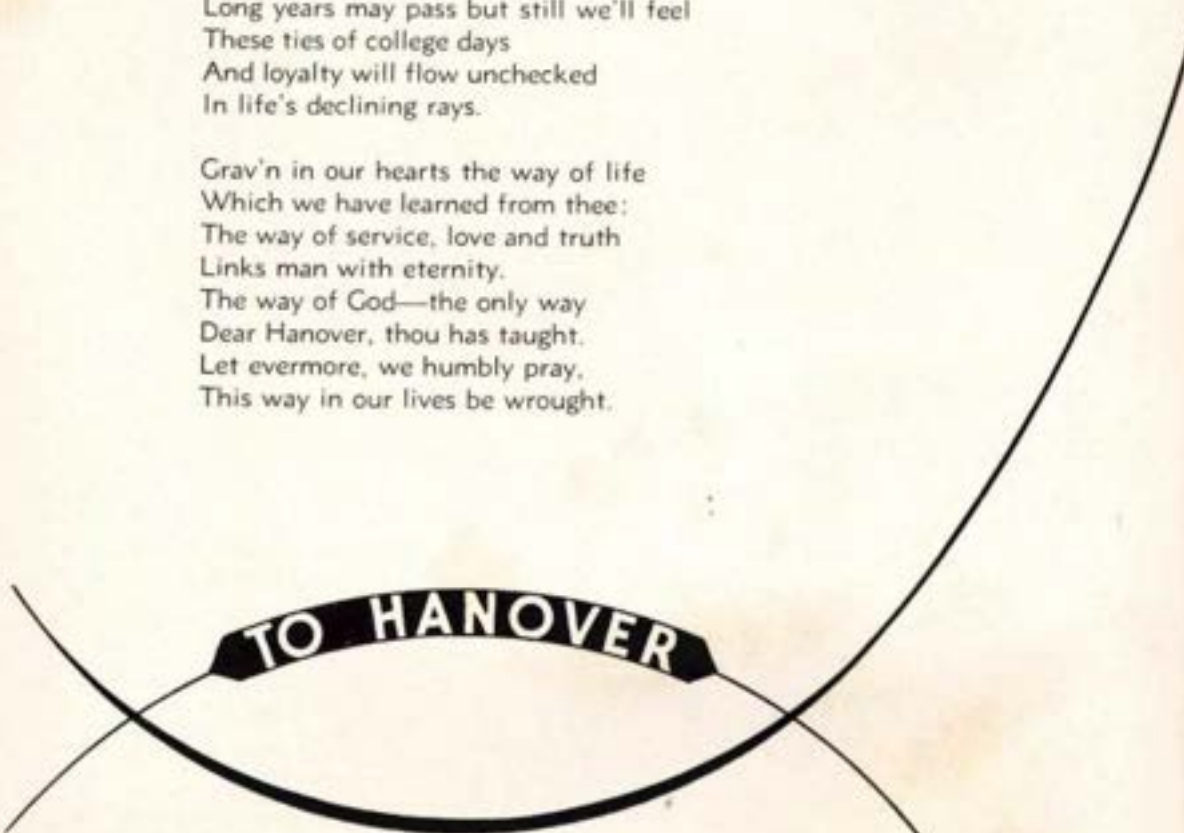


TO HANOVER

Sealed in our hearts such beauty rare
As ne'er forgot can be
And though far, far away,
We'll remember with deep poignancy,
Such beauty rare o'erfloods the soul
And lifts it unto God,
That man henceforth lives of the spirit
No longer of the clod.

Burned in our hearts these friendships sweet
Which fill our lives with zeal.
As comrades share these joy-filled days
We find a joy that's real.
Long years may pass but still we'll feel
These ties of college days
And loyalty will flow unchecked
In life's declining rays.

Grav'n in our hearts the way of life
Which we have learned from thee:
The way of service, love and truth
Links man with eternity.
The way of God—the only way
Dear Hanover, thou has taught.
Let evermore, we humbly pray,
This way in our lives be wrought.



TO HANOVER

IND COL
379.77213
REV

Redonah

PUBLISHED BY THE
JUNIOR CLASS
HANOVER COLLEGE
HANOVER INDIANA





TO that spirit which prompts youth to seek, to grasp, and to use the truths of life, this book is dedicated.

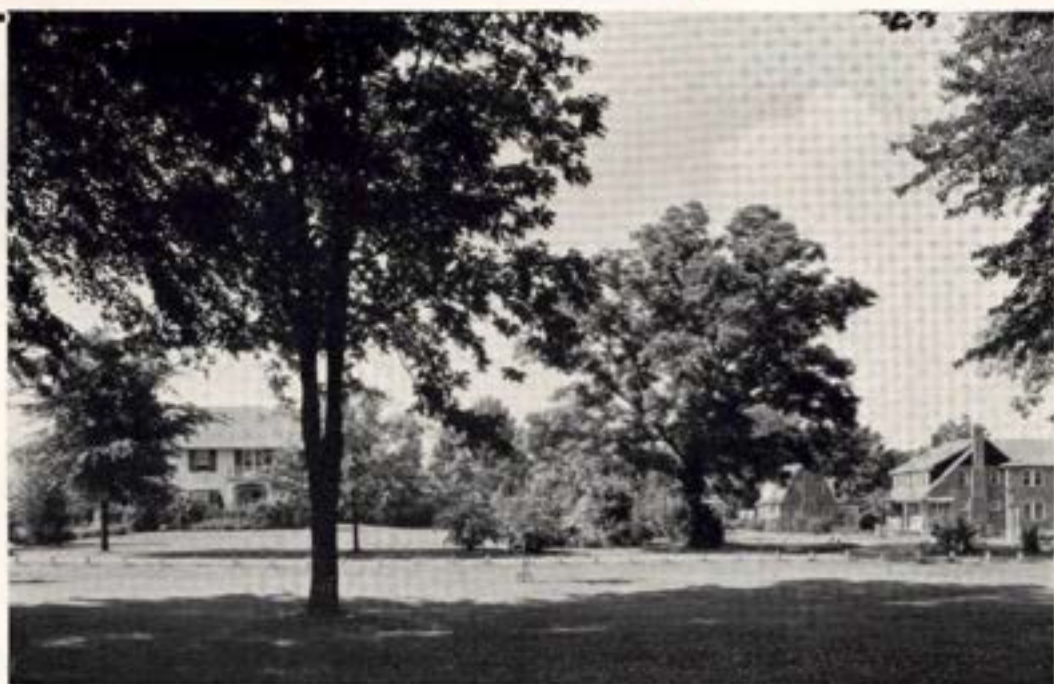
May these fragments of campus life serve as a source of pleasant memories to the faculty and to the students of Hanover College.





*F*OR countless centuries a great stream of water has entrenched itself deeper and deeper into the earth, winding its way for nine hundred and seventy-five miles from Pittsburgh to the Mississippi River into which it flows. The Ohio River is a mirror that reflects the moods of nature, the color of the sky and the wooded hills along the shore or it is a powerful force surging onward and onward in unbounded strength—yet always it is a magnificent work of nature.

*T*HROUGHOUT each season of the year the beauty of Golarden Lodge, the home of Dr. Ballard, attracts the attention of all lovers of beauty. Surrounded by innumerable varieties of both native and imported shrubbery, the house, with its quiet and restful dignity, never fails to charm all who see it. To the right of Golarden Lodge, three of the recently constructed houses comprising faculty row are situated.




THE citizens of Hanover have a great deal of civic pride as is evident from the many well kept homes and yards along the pleasant streets of the little town. This view is of "She" street located only a short distance from the campus. It has received its name because of its popularity as a promenade for dates. Here also live many students who enjoy listening to the old timers tell of the early days of Hanover College.






*F*ROM the turn in the driveway before the president's home, one receives his first impression of the Hanover College Campus. Within a naturally beautiful setting of tall and stately trees, Classic Hall, Science Hall, and The Thomas Hendricks Library are situated far above the wide expanse of the Ohio River. Within this quiet and peaceful setting Hanover College students for the past seventy-seven years have worked and played.


COLLEGE





SINCE its founding on January 1, 1827 by Rev. John Finley Crowe, Hanover College has successfully struggled against adversity in many forms. Tornadoes, fires, changes in location, and above all financial difficulties have placed great obstacles in the way of the advancement of the college that we of the present student body hardly realize. Had it not been for the grim determination and the self-forgetting devotion to the task of the founders, Hanover College would now be an unrealized dream, but through strong perseverance and an absolute belief in prayer, these pioneers kept alive their ideal to establish an institution to develop young men for service to God and man.

The first hundred and seven years have ended successfully for the college and she looks back upon the difficulties she has overcome, and upon the work she has accomplished, and forward to the future which holds brightness and great promise for a greater Hanover.







Dr. Albert George Parker, Jr.

DURING the five years that Dr. Albert George Parker, Jr. has served as president of Hanover College, he has initiated many plans for the development of the college. Under his tireless efforts the college has had an increase in enrollment and in financial aid and also much has been done toward the beautification of the campus.

Dr. Parker served as the head of the department of Social Science, Shantung Christian University, Tsinan, China, for eight years. He has received degrees from Park College, Presbyterian Theological Seminary, The University of Chicago, and Wabash College.

HENRY W. BURGER
Secretary-Treasurer
B. S. Hanover College
B. D. McCormick Seminary
D. D. Hanover College
Phi Gamma Delta



JEAN J. ANDERSON
Professor of Modern
Languages
A. B. Indiana University
A. M. Indiana University
Travel and Study in Europe
one year



RUSSELL H. FITZGIBBON
Professor of History
A. B. Hanover College
A. M. Indiana University
Ph. D. Univ. of Wisconsin
Phi Delta Theta
Alpha Phi Gamma
Pi Gamma Mu
Gamma Sigma Pi



NED GUTHRIE
Professor of Chemistry
B. S. Illinois Wesleyan
M. S. Illinois
Additional work at Illinois
Alpha Delta Alpha



PAUL S. CONKLIN
Professor of English
B. S. Northwestern
A. M. Wisconsin
Additional work at the Uni-
versity of Chicago and
Wisconsin



GRANT T. WICKWIRE
Professor of Geology
Ph. B. Wesleyan College
M. S. Yale University
Alpha Zeta



HERBERT A. MEYER
Professor of Mathematics
B. S. Des Moines U.
M. S. Iowa University
Ph. D. Iowa University



RUSSELL M. KUTZ
Professor of Education and
Director of Teacher Training
A. B. Wisconsin University
A. M. Wisconsin University
Ph. D. Wisconsin University



R. EARL MARTIN
Professor of Physics
A. B. Indiana University
M. S. Lehigh University
Ph. D. Indiana University



JOSEPH L. HYATT
Professor of Biology
B. Ed. Illinois State Normal
M. S. Illinois University
Additional work at Indiana
University

MARK L. ENTORF
Professor of Social Science
and Psychology
A. B. Grinnell
Additional work at the
University of Columbia,
Chicago, and Harvard



ELIOT PORTER
Professor of Philosophy
and Bible
A. B. University of Kansas
A. M. Princeton University
Ph. D. University of Chicago
Phi Beta Kappa
Alpha Tau Omega

KATHERINE S. TUBBS
Professor of Ancient
Languages
A. B. Bates College
A. M. Illinois University
Ph. D. Illinois University
Phi Beta Kappa



VIOLA MITCHELL
Director of Physical
Education for Women
A. B. DePauw University
M. A. University of Iowa

JOHN M. VAN LIEW
Director of Physical
Education
B. S. Illinois; additional work
—Illinois, Columbia, Notre
Dame, Harvard, Drake



KATE ANDREWS
Dean of Women and
Ass't Professor of English
A. B. Wellesley College
Graduate work at Chicago,
Columbia, and University
of Rome

MARIE GARTEN
 Assistant Professor of
 Modern Languages
 A. B. Carthage College
 A. M. Chicago University
 Additional work at Univer-
 sity of Iowa



MARY LOUISE FITTON
 Librarian and Instructor
 in Journalism
 A. B. Indiana University
 B. S. Co'lumbia University
 Phi Beta Kappa
 Mortar Board
 Alpha Omicron Pi
 Alpha Phi Gamma



W. MAXWELL POLAND
 Director of Music
 B. S. Ball State College
 Additional work at Univer-
 sity of Michigan



ANNA MARIE FISHER
 Assistant Professor of
 Education
 B. S. Ball State College



OSCAR K. DIZMANG
 Professor of Social Science
 and Business Administration
 B. S. Kansas College of Agricul-
 ture and Applied Science,
 M. A. Chicago, and additional
 work at the University of
 Chicago.
 Kappa Sigma Pi
 Pi Gamma Mu
 Pi Kappa Delta
 Omicron Delta Gamma



MRS. ALBERT H. WATTS
 Instructor in Education
 A. B. Franklin College
 B. S. Columbia University
 Pi Beta Phi



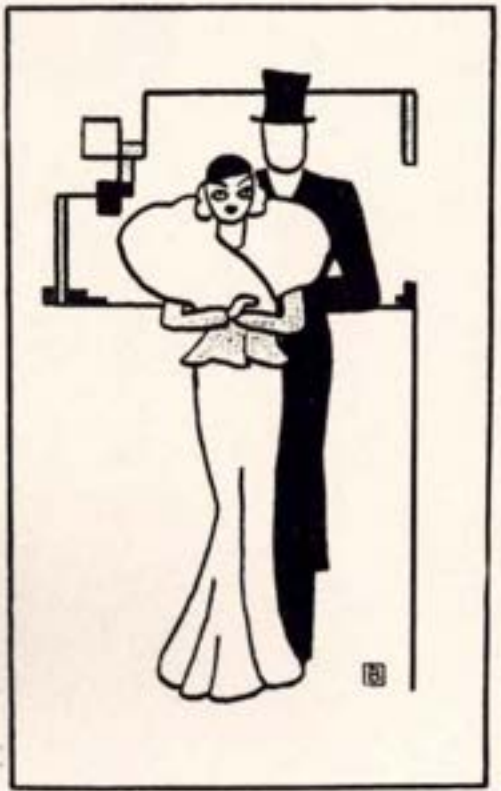
WILLARD G. DAILEY
 Instructor in D:ology
 Assistant Coach
 B. S. Hanover College



JEAN W. SHEPHERD
 Instructor in Physical
 Education
 A. B. Hanover College



HENRY M. LEE, Assistant Librarian and Manager of Book Store
 LYMAN R. THAYER, Instructor in Psychology
 CHARLES W. BROWNE, Tutor in History
 MABEL K. RANEY, Tutor in English and Mathematics



SENIORS



COOMBS

CLARK

NIGHBERT

EVANS

Seniors

*T*HROUGH four years of the world's worst economic crisis we of the senior class have pursued our college career amid many unfavorable circumstances and now we stand facing a world that apparently neither needs us nor even wants us. But we are unafraid for we have absolute confidence in what we are able to do. We have graduated from a college that for almost a century has faced untold hardships yet by honest hard work and perseverance it has weathered every storm and has instilled in us its spirit of courage. There can be no limit to the number of trained men and women that the world can use and surely if ever society was in need of capable citizens now is the time; therefore we stand at the beginning of our careers eager and unafraid.

LOWELL ANDERSON

Φ Δ Θ

Berwyn, Illinois

Morton Jr. College 1, 2; Varsity Football 3, 4; Varsity H. Club 3, 4; Intramural Athletics 3, 4.

**MARYLOU CLARK**

Φ M

Lagoda, Indiana

Y. W. C. A. Cabinet 1, 2; W. A. A. 1, 2, 3, 4, Pres. 3, 4; Glee Club 1, 2; Science Club 2; French Club 1, 2; Sec'y. of Sr. Class 4; Women's Varsity Athletics 1, 2, 3, 4; "Revonah" Staff 3; Triangle Staff 2; Women's Sports Editor of Triangle 3; Winner Maid Marian Archery Cup 3; Women's Student Government Organization 1, 3; Pan-Hellenic Council 3, 4; Y. W. C. A. 1, 2, 3, 4.

HILBERT COFIELD

Φ Γ Δ

Madison, Indiana

Student Council 2, 3, Pres., 4; "Revonah", Business Mgr. 3; Varsity Debate 1, 3; Intramural Debate 3, 4; Spanish Club 1, Pres., 2; Social Science Club 3, 4; Triangle, Board of Control 1, 2.

**BERNARD CORSON**

Φ Δ Θ

Berwyn, Illinois

Morton Junior College 1, 2; Football 3; Baseball 3, 4; Social Science Club 3, Vice-Pres., 4; Dramatic Club 3, 4; Intramurals 3, 4; Business Manager, Triangle 3, 4; Sphinx Club Pres., 4; Intramural Debates 3.

FORREST D. COUCH

Φ Γ Δ

Rochester, New York

Football 1, 2; Choir 2, 3, 4; Bus. Mgr., 4; Band 1, 2, 3, 4, Pres., 3, 4; French Club 1, 2, Treas., 2; Triangle Staff 4; Science Club 1, 2.

**HENRY M. COOMBS**

Φ Γ Δ

Indianapolis, Ind.

DePauw University 1; Triangle Sports Editor 2; Editor-in-Chief 3; Band 2; French Club 3; German Club 4; Sphinx Club, Sec.-Treas., 4; Senior Class Pres.; Student Social Committee 4; Cheer Leader 4; Intramurals 3, 4.

VELMA DILTS

Φ M

Rising Sun, Indiana

Y. W. C. A. 1; Girl's Glee Club 1; Chapel Choir 1; Classical Club 1, 3; W. A. A., Sec., 1; Science Club 1; Miami University 2, 3.

**LAWRENCE T. EVANS**

Θ K N

Columbus, Ind.

Interfraternity Council 3, 4, Pres., 4; Student Council 2, 3, 4; Triangle Staff 1, 2, 3, 4, Editor-in-Chief 4; Senior Class Treasurer 4; Y. M. C. A. Cabinet 3, 4; "Revonah" Board of Control 3; Publicity Director 3; Varsity Tennis 2, 3, 4; Science Club 1, 2; Spanish Club 1, 2; Fisherman's Club 1; Intramurals 1, 2, 3, 4.

WILLIAM FAULDS

B Θ II

Cincinnati, Ohio

Y. M. C. A. 1, Cabinet 2, 4, Pres. 3; German Club 1, 4, Pres. 2, 3; Social Science Club 3, 4; "Revonah", Editor 3; Triangle 4; Sphinx Club 4; Intramurals 1, 2, 3, 4; Interfraternity Council 4.

**JACK FOSTER**

B Θ II

Attica, Ind.

Intramurals 1, 2, 3, 4; Band 1, 2; Student Council 2, 3, 4; Interfraternity Council 4; Glee Club 1, 2; Editor Hand Book 2; Triangle 2, 4.

JOHN GWIN

Φ I Δ

Connersville, Indiana

Football 1, 2, 3, 4; Basketball 1, 2, 3, 4; Track 3, 4; Varsity H Club 1, 2, 3, 4; Social Science Club 2; Interfraternity Council 2, 3, 4; "Revonah" Board of Control 3; Intramurals 1, 2, 3, 4.

**EVELYN GARDNER**

Bennington, Indiana

Social Science Club 3, 4; Triangle Staff 3, 4; W. A. A. 1, 2, 3, Vice Pres.; Y. W. C. A. 1, 2, 3, Treas.; Class Secretary 3; Gamma Sigma Pi 2, 3, 4; Independent Women's Club 3, Pres.; Women's Varsity Athletics 1, 2, 3, 4.

ALMON HARMON

Lexington, Indiana

German Club 1, 2; Science Club 4; Y. M. C. A. 3, 4.

**SARAH E. HENNING**

Φ Σ

Hanover, Indiana

German Club 1, 2, 4; Glee Club 1; W. A. A. 1, 2; Science Club 1, 2; Y. W. C. A. 4; German Club 1, Sec.; Treas., 2.

Gladys L. Hetherington

Lexington, Indiana

Orchestra 1, 2; Glee Club 1, 2, 3; Y. W. C. A. 1, 2, 3, 4; Latin Club 3; Church Choir 3.

**MARY JO KRUMMEL**

Δ Φ

Vevay, Indiana

DePauw University 1; Gamma Sigma Pi; Y. W. C. A. Cabinet 3, 4; Student Council 3, 4; Choir 4; Social Science Club 3, 4, Sec.; 3; French Club 2, 3; Girls' Glee Club 2, Pianist.

MARGARET LEE

Hanover, Indiana

French Club 2; Y. W. C. A. 1, 2; Social Science Club 2, 3; Science Club 1, 2.

**HOWARD LEE**

Hanover, Indiana

Student Council 1, 2, 3, 4, Vice-pres.; 3; Y. W. C. A. 1, 2; Soph. Class Treas.; Junior Class Vice-Pres.; Independent Men's Club, Pres.; Fishermen's Club 1, 2, Pres. 2.

ELLER B. LUTES

Δ Δ Δ

Gaston, Indiana

Y. M. C. A. 1, 2, 3, 4, Pres.; 4; Science Club 1, 2, 3, 4, Treas.; 3, 4; Student Council 2, 3; Sphinx Club 4, Vice-Pres.; German Club 2, 3; Delta Epsilon 2, 3, 4.

**MILDRED MCKIM**

Laconia, Indiana

Y. W. C. A. 1, 2, 3, 4; Social Science Club 2; Classical Club 3; Independent Women's Organization.

HAROLD L. MALONE
Borden, Indiana

Student Council 1, 2, 3, 4;
Intramurals 1, 2, 3, 4; Tennis
3, 4; German Club 2, 3,
4; Science Club 1, 2, 3, 4;
Pres. 4; "Revonah" Board 3.



JOE MAZE

Φ Δ Θ

Westville, Illinois

Varsity Football 1, 2, 3, 4;
Baseball 2, 3; Track, Varsity
3, 4; Varsity H Club 1, 2,
3, 4; Intramural Mgr., 3, 4;
Interfraternity Council 3, 4;
Brown Hall, President 4; Y.
M. C. A. 1, 2; Intramurals
1, 2, 3, 4; Science Club 1,
2, 3; Social Science Club 1,
2.

KELSO MYERS

Α Χ Ω

Wabash, Indiana

Purdue University 1, 2; Social
Science Club 3, Pres. 4;
Y. W. C. A. Cabinet 3, 4;
"Revonah", Associate Editor
3; Triangle Staff 4; Dramatic
Club 3, 4.



FRANK E. MENOZZI

Φ Γ Δ

Gardner, Illinois

Basketball 1, 2, 3, 4; Base-
ball 2, 3, 4; Football 1, 2;
Intramurals 1, 2; Social Sci-
ence Club 1; Interfraternity
Council 1, 2; Varsity H Club
1, 2, 3, 4; Science Club 1, 2.

DONALD R. MOYSEY

Φ Δ Θ

Berwyn, Illinois

Morton Jr. College 1, 2; Social
Science Club 3, 4;
French Club 4; Triangle
Staff 3, Adv. Mgr., 4; Stu-
dent Council 4; Intramurals
3, 4.



MARJORIE L. NIGHBERT

Α Δ Π

Hanover, Indiana

Class Vice-Pres., 4; Class
Vice-Pres., 1; Girl's Glee
Club 1, 2; College Choir 1,
2, 3, 4; W. A. A., 1, 2;
French Club 1, 2; Y. W. C.
A., 1, 2, 3, 4; Pan-Hellenic
Council 1, 2; Science Club
1, 2, 3.

MARY ALICE OWINGS

Φ Μ

Vevay, Indiana

Y. W. C. A. 1, 2, 3, 4, Sec'y.
3; W. A. A. 1, 2, 4; Women's
Varsity Athletics 1, 2, 3,
4; Social Science Club 1, 2;
Science Club 2, 3, 4; Women's
Student Government Associa-
tion 1, 2, 3, Pres. 4.



THELMA PRICE

Φ Μ

Sunman, Indiana

College Choir; Y. W. C. A.,
1, 2, 3, 4; University of Cin-
cinnati 1, 2; Women's Stu-
dent Government Organiza-
tion 3, 4.

HORACE RANDELL

Β Ο Π

Connersville, Indiana

Varsity Debate 1; Intra-
murals 1, 2, 3, 4; Glee Club
1, 2; Chapel Choir 1, 2, 3, 4;
Bus. Mgr., 3; Band 1, 2, 3,
Treas., 3; Interfraternity
Council 2; German Club 1, 2;
Science Club 1; Yell Leader
1; Football 4; Triangle Staff
2, 3.



RUTH SCHOLZ

Α Φ

Mitchell, Indiana

University of West Va., 1,
2, 3; French Club; Basket-
ball 4.

JAMES T. SNYDER

Φ Δ Θ

Ashland, Kentucky

Alpha Phi Gamma 3, Pres., 4; Spanish Club 1, Pres., 2; Dramatic Club 1, 2, 3, Pres., 4; Social Science Club 3, 4; Gamma Sigma Pi 3, 4; Sphinx Club; Science Club 1, 2; Triangle Staff 1, Bus. Mgr., 3; Student Council 2, 3; Football Mgr., 2, 3.



EARL THURESON

Φ Δ Θ

Berwyn, Illinois

Morton Jr., College 1; Football 2, 3; Baseball 2, 3, 4; Varsity H Club 2, 3, 4; Intramurals 2, 3, 4.

LA VERNE TURNER

Madison, Indiana

Western College for Women
1, 2; Y. W. C. A., 3, 4.



WILLIAM E. ULBRICH

Φ Γ Δ

South Wilmington, Ill.

Intramural Board 3; Triangle Staff 1, Circulation Mgr., 2; Revonah Staff 2; Sports Editor 3; German Club 1, Vice-Pres., 2, 3, Pres., 4; Intramurals 1, 2, 3, 4; Science Club 1, 2, 3, 4; Basketball Mgr., 3, 4; Interfraternity Council 4.

NATHAN WILSON

Deputy, Indiana

Science Club 1, 2, 3; Social Science Club 1, 2; Intramurals 1, 2, 3, 4.



CONRAD E. YOUNG

Port Royal, Kentucky

Science Club 1, 2, 3; Social Science Club 1, 2, 3; Intramurals 1, 2, 3, 4.

KEITH MALSARY

B Θ Π

Lafayette, Indiana

Purdue 1 semester; Basketball 2, 4; Tennis 1, 2, 4; Track 3, 4; Intramurals 1, 2, 3, 4; Interfraternity Council 3; Glee Club 1; Triangle 2, 3, 4; Revonah 3; Spanish Club 1, 2, Pres., 2; President Junior Class; Junior Baseball Mgr.; Varsity "H" Club 3, 4.



DOROTHY ARCHBOLD

Detroit, Michigan

Women's Varsity Athletics 1, 2, 4; W. A. A. 1, 2, 4; Y. W. C. A. 1, 2, 4; Spanish Club 1, 2, 4; Alpha Phi Gamma 2, 4; Triangle Staff 2; Dennison University 3.



JUNIORS



EARNSHAW

HALE

BREEDING

PELTZER

Juniors

EARLY in the fall of 1931, one hundred sixty-seven extremely lost and homesick freshmen wandered about Hanover campus. We had begun our long and difficult quest of higher learning with the aid of little red handbooks, freshman caps, and encouraging pats rendered by upperclassmen on various portions of our anatomy. By the end of the first week, half of us were ready to turn back and by the time of the class fight all of us were ready, but after we had emerged from a coating of ancient tomatoes to find ourselves victorious in the class fight, we gained enthusiasm and ended the year most successfully.

During the following two years we have continued to keep up the record that we set during our first year. We have furnished our share of representatives in all activities and have taken an active part in campus affairs.

CLIFFORD ADAMS
A Δ A
Rockville, Indiana
Gamma Sigma Pi.



HERMAN F. ALLEN
B Θ II
Kokomo, Indiana

Y. M. C. A. Cabinet 2, 3;
Varsity Debate 1, 2, 3; In-
terfraternity Council 2, 3,
Vice President 3; Dramatic
Club 1, 2, 3, Business Mgr.,
2, 3; Spanish Club 1, 2, 3,
President 2, 3; Triangle Staff
2, 3, Asst. Editor 2; Revonah
Asst. Editor 2, Editor-in-
Chief 3; Gamma Sigma Pi
2, 3; Sphinx Club 3.



GEO. C. BURKERT, JR.
B Θ II

Indianapolis, Indiana
Alpha Delta Sigma; Kappa
Kappa Psi; Butler University
1; Intramural Sports 2, 3;
Tennis 2, 3; Revonah Board
of Control 3; Band 2, 3.



EDGAR R. BURNS
B Θ II

Ford City, Pa.
Triangle Staff 1; Glee Club
1; Dramatic Club 1, 3;
French Club 1, 3; German
Club 3; University of Pitts-
burgh 2.



ESTEL COFFEY
Salem, Indiana

Gamma Sigma Pi; French
Club 1, 2; Independent
Women's Organization.



CATHERINE COMPTON
Boggstown, Indiana



CARLINE McKAY
A Δ II
Madison, Indiana



WOLFORD W. ALLEN
Φ Γ Θ

Pleasureville, Kentucky
Asst. Football Mgr., 1, 2,
Mgr., 3; Track Mgr., 3; So-
cial Science Club 1, 2; Intra-
murals 1, 2, 3; Varsity H
Club 3; Baseball 1.



JOHN BLANKENSHIP
Φ K N

Indianapolis, Indiana
Science Club 1, 2, 3; Intra-
murals 1, 2, 3; Varsity Base-
ball 1, 2, 3; Varsity Football
2, 3; Revonah Board of Con-
trol; Interfraternity Coun-
cil; Student Council; Var-
sity H Club 2, 3.



WILMONT B. BOONE
Shanghai, China



DOROTHY E. BREEDING
Φ M

Edinburg, Indiana
Alpha Phi Gamma 2, 3, Vice-
pres., 3; Y. W. C. A. 1, 2,
3, Pres., 3; W. A. A. 1, 2;
Science Club 1; Dramatic
Club 1, 2, 3, Vice-pres., 3;
Choir 1, 2, 3; Social Science
Club 3; Sec'y., Junior Class;
Winner Eloise Millis Contest
1; Student Council 2, 3,
Sec'y 3; Member of W. S. C.
Committee 3; French Club
1, 2; Associate Editor of Re-
vonah 3; Triangle Staff Copy
Editor 2.



EVELYN CRIM
A Δ II

Hanover, Indiana
W. A. A. 1, 2; Science Club
1, 2; Classical Club 2, 3;
Varsity Debate 2, 3; Winner
James E. Blythe Contest 2;
Y. W. C. A. 2, 3.



EDWARD CLAXTON
Φ Γ Δ

French Lick, Indiana
Intramurals 1, 2, 3; Varsity
Baseball 3, 4.



French Club 1, 2, 3; Science
Club 1, 3; Y. W. C. A. 1, 2,
3; Pan-Hellenic Council Vice-
Pres., 3; Student Gov't., 2;
W. A. A. 1, 2.



THELMA ERNEST

A Δ II

Seymour, Indiana
 Choir 1, 2, 3; Dramatic Club
 1, 2, Sec'y. 3; Freshman De-
 bates; Science Club 1; W.
 A. A. 1, 2, Sec.-Treas., 3; W.
 A. A. Board 3; German Club
 1, Sec.-Treas., 2, 3; Gamma
 Sigma Pi 2, Sec.-Treas., 3;
 Y. W. C. A. 1, 2, 3; Social
 Science Club 2, Sec., 3; Stu-
 dent Government Council 3.

**CHARLES EARNSHAW**

O K N

Okeana, Ohio

Football 1, 2, 3; Baseball 1,
 2, 3; Basketball 1; Intra-
 murals 1, 2, 3; Science Club
 1, 2; Interfraternity Council
 2, 3; Junior Class President;
 Varsity H Club 1, 2, 3.

HAROLD FLICK

O K N

Butlerville, Indiana

Intramurals 1, 2, 3; Varsity
 H Club 3; Football 1, 2, 3;
 German Club 1; Go Getters
 Club 1.

**LEODA M. FENWICK**

Floyd Knobs, Indiana

Y. W. C. A. 2, 3; Classical
 Club 2, 3; Student Council
 3.

WILLIAM H. GRALER

O K N

Cincinnati, Ohio

Football 1, 2, 3; Track 2, 3;
 Intramurals 1, 2, 3; Fresh-
 man Debates 1; Intramural
 Debating 2, 3; Varsity De-
 bating 2; Dramatic Club 2, 3.

**GERALD J. HAY**

Σ N

Boonville, Indiana

Indiana University 1; Varsity
 H Club; Football 2, 3;
 Track 2, 3.

MARY FRANCES HALE

A Δ II

Shelbyville, Indiana

French Club 1, 2, Treas., 2;
 Science Club 1; Social Sci-
 ence Club 2, 3; W. A. A. 1;
 Y. W. C. A. 1, 2, 3, Sec.-
 Treas., 3; Revonah Staff 3;
 Student Council 3; Women's
 Student Gov't., 3; Gamma
 Sigma Pi 2, 3; Vice-Pres.,
 Junior Class.

**HARVEY L. HANNAH**

A Δ A

Bloomfield, Indiana

Spanish Club 1, 2, 3; Stu-
 dent Council 3.

DILLON HERZER

Φ Δ Θ

Garrett, Indiana

Science Club 1, 2, 3, 4; So-
 cial Science Club 1, 2; Y.
 M. C. A. 1, 2; Intramurals 1,
 2, 3; Basketball 2, 3, 4;
 Football 2, 3, 4; Baseball 2,
 3; Varsity H Club 2, 3, Pres.
 4.

**ROWENA HOKE**

Salem, Indiana

Gamma Sigma Pi 2, 3; Stu-
 dent Council 2, 3; French
 Club 1, 2; Science Club 3;
 Independent Girl's Club 1, 2,
 3; Y. W. C. A. 2, 3.

FRANCIS M. JOHNSON

Union City, Indiana

French Club 1, Vice-Pres., 2;
 Freshman Debates; College
 Choir 1, 2, 3; Social Science
 Club 3; Varsity Debates 3;
 Soph., Treas.; Student Coun-
 cil 1, 2, 3.

**THELMA W. JACKSON**

Hanover, Indiana

W. A. A. 1, 2, 3; Choir 1,
 2, 3; Science Club 1.

BERNARD LEMEN
Canaan, Indiana



ELBERT LASHER
B O II
Seymour, Indiana
Football 1, 2, 3; Intramurals
1, 2, 3; Glee Club 1; Social
Science Club 1.

HEROLD H. LOSCHE
Φ Γ Δ
Indianapolis, Indiana
Spanish Club 1, 2, 3; Sec-
Treas. 3; Triangle, Circulation
Manager; Social Science
Club; Sphinx Club; Business
Manager of Revonah 3.



WALTER C. MARTIN
O K N
New Salisbury, Indiana
Track 2; Baseball 1, 2, 3.

LUCILLE MORRELL
Osgood, Indiana
Independent Women's Or-
ganization, Pres. 3; French
Club 1, 2; Social Science
Club 3; Gamma Sigma Pi 2,
3; Vice-Pres., 3; Intramurals
2, 3; Freshman Debates 1.



GERALD MINER
O K N
Scottsburg, Indiana

BUFORD MANNIX
Φ Γ Δ
Charlestown, Indiana
Intramurals 1, 2, 3; Science
Club; Student Council 2, 3;
Interfraternity Council 2, 3;
Educational Club 1, 2.



MARY E. McKEAND
A Δ II
Madison, Indiana
Science Club 1; Spanish Club
1, 2, 3; Vice-Pres. 1, 2; Stu-
dent Council 1, 2; Y. W.
C. A. 1, 2, 3; Pan-Hellenic
Council III, Pres. 3; Social
Science Club 3.

ORVILLE W. MANN
B O II
New Albany, Indiana
Varsity H Club 2, 3; Spanish
Club 1, 2, 3; Triangle Staff
3; Track 2, 3; Revonah Staff
3; Intramurals 1, 2, 3, Mgr.,
Intramurals 3.



FLOYD E. NEERIMER
A Δ A
Salem, Indiana
Sophomore Class Pres.; Tri-
angle, Associate Editor, 2;
German Club 1, 2, President
3; Science Club 1, 2, 3;
Football 1, 2, 3; Varsity H
Club; Intramurals 1, 2, 3.

WESLEY PELTZER
Φ Δ Θ
Oak Park, Illinois
German Club 1, 2, 3; Intra-
murals 1, 2, 3



LOUISE PAVEY
Φ M
Martinsville, Indiana
Student Council 3; Women's
Student Gov't 3; Spanish
Club 1, 2, 3; Chapel Choir
1; Science Club 1; Triangle
Staff 2, 3, Copy Editor 3;
Y. W. C. A. 1, 2, 3, Cabinet
1; Pan-Hellenic Council 2, 3,
Treas. 3.

GORDON RANEY

Φ Δ Θ

Jeffersonville, Indiana

Student Council 2, 3; Basketball 1, 2, 3; Sphinx Club 3; Revonah Staff 3; Interfraternity Council 2, 3; Intramurals 1, 2, 3; Varsity H Club 2, 3; Revonah, Board of Control 3.

**JAMES SHANKLIN**

Β Θ Π

Hammond, Indiana

Kemper Military School 1; French Club 2; Band 2, 3; Intramurals 2; Choir 3; Revonah 3; Orchestra 2.

**CLAYTON SNYDER**

Θ Γ Δ

Hanover, Indiana

Science Club 1, 2; Intramurals 3; German Club 1, 2, 3; Interfraternity Council 2.

**MILDRED THOMPSON**

Carrollton, Kentucky

Student Council 2, 3; W. A. A. 1, 2; Educational Club 1, 2, 3; Y. W. C. A. 3; Independent Women's Organization 1, 2, 3; Women's Varsity Sports 1, 2.

**WILLIAM WARN**

Θ Κ Ν

Milan, Indiana

Chicago Technical College 1; Football 2; Baseball 2, 3, 4; Varsity H Club 3, 4; Science Club 2; Student Council 3; Intramurals 2, 3, 4.

**RICHARD WILLIAMS**

Θ Γ Δ

Canton, Ohio

Social Science Club 3; Dramatic Club; French Club 1, 2; Varsity Debating 1; Intramurals 2, 3; Varsity Tennis 2, 3; Triangle, Board of Control 2, 3; Revonah, Board of Control 3.

**HELEN J. ZELEZNICK**

Berwyn, Illinois

**MARGARET ROGERS**

Seymour, Indiana

Student Council 1, 2, Treas., 2; Y. W. C. A. Cabinet 2, 3; Dramatic Club 1, 2, 3; Chapel Choir 1, 2, 3; Gamma Sigma Pi 2, 3; Social Science Club 2, 3; French Club 1, 2; Revonah, Associate Editor 3; Independent Girl's Organization, Pres. 2; Women's Student Government Association 1, 2, Treas., 2; Editor Handbook 2.

RUTH SMITH

Hanover, Indiana

Freshman Debates 1; Varsity Debates 1, 2; Glee Club 1; French Club 1; College Choir 2, 3; Y. W. C. A. 3; Social Science Club 3; Independent Women's Organization 3.

PAUL STINES

Φ Δ Θ

Westville, Illinois

Football 1, 2, 3; Varsity H Club 2, 3; Science Club 1, 2, 3; Revonah 3; Junior Basketball Mgr., 3; Intramurals 1, 2, 3.

ADOLPH WHITE

Λ Δ Δ

Mexico D. F., Mexico

ROGER W. WILLIAMS

Greensburg, Indiana

Band 1, 2, 3; Science Club 1, 2, Vice-Pres., 3; Scholarship Cup 2; Hamilton Ethics Prize 2; Gamma Sigma Pi 2, Pres., 3; German Club 3; Student Council 2.

VINCENT YOUNG

Θ Κ Ν

Osgood, Indiana

Band 1, 2, 3; Baseball 1; Student Council 1, 2; Science Club 2.

Morton Junior College 1, 2; Dramatic Club 3; French Club 3.



RALPH A. HOLMES
 ◆ Γ Δ
 Oak Park, Illinois
 Morton Junior College 1;
 University of Michigan 2;
 Y. M. C. A. 3.

WILLIAM FRANKLIN
 Versailles, Indiana
 DePauw University 1, 2; So-
 cial Science Club 3.

PAUL DAVIS
 Hanover, Indiana
 Science Club 1, 2; Intra-
 murals 1, 2.

Second Semester Freshmen

These students will remain in College during the summer to complete their freshman work and will enroll as Sophomores in September.







UNDERCLASSMEN



ANDERSON

CLARK

BILLINGSLEY

Class of 1936



Sophomores

*T*WO years ago we were humble freshmen wandering wonderingly amid antagonistic upperclassmen who laughed at us and wielded huge paddles to impress us with their superior abilities. During the class fight we most gallantly offered ourselves as victims to the sophomore class. After the fight we felt that we were thoroughly initiated into the life of Hanover College, so that we began to make ourselves known in all forms of college life. In scholarships, athletics, and extra-curricular activities, the ability of the class became evident. During our sophomore year we again lost the fight but maintained and even strengthened our previous year's record.



Thirty-five



GRAFFIS

WOOD

BARNES

Class of 1937



Freshmen

*O*UR history is brief but we have managed to accomplish much in a short period of time. We began our year by defeating the sophs in the class fight and thereby gained a certain amount of prestige. Although we have not participated actively in many activities yet it is quite evident that we have capable members who within the next three years will take their places as leaders on the campus.



Thirty-seven



A

CTIVITIES





*H*ANOVER College has several worthy clubs and organizations which play an important part not only in furthering the work of the classroom but also in giving the students a certain amount of social life. The language, the educational and the science clubs augment the work of the classroom, while five fraternities, two sororities, and an organization of independent women give the students a certain amount of social activity and tend to draw the student body into a closer union.





Gamma Sigma Pi

Founded in 1926 this honorary society is designed for the purpose of giving recognition to students of marked character and scholastic ability. Membership is conditional depending on a scholastic average of two-point five. Dr. Russell H. Fitzgibbon is faculty adviser of Gamma Sigma Pi which has as its president Roger Williams.

FRONT ROW: Mary Jo Krummel, Iris Wimer, Margaret Scott, Evelyn Gardner, Lucille Morrell, Jean Shepherd.

SECOND ROW: Kelso Myers, Mary Frances Hale, Margaret Rogers, Estel Coffey, Myra Davis.

THIRD ROW: Rowena Hoke, Dr. Russell H. Fitzgibbon, faculty adviser; Thelma Ernest, Ruth Perin.

FOURTH ROW: James Snyder, Roger Williams, president; Herman Allen, Clifford Adams.

Not in picture—Hilbert Cofield.





LAWRENCE EVANS, Editor DONALD MOYSEY, Adv. Mgr.

Triangle

Although a number of students who were members of the Triangle Staff last year either graduated or were forced to drop the Journalism course, the Triangle has steadfastly pursued its policy of being "bigger and better than ever" each year.

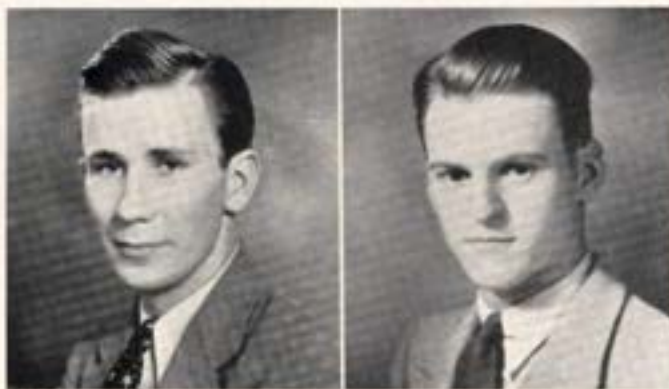
Under the leadership of Lawrence Evans as Editor and Bernard Corson as Business Manager, the Triangle has added several new features to the service it gives its readers. During this year Collegiate Digest, a special rotogravure supplement for college papers was distributed each week. The Triangle itself was given a broader scope by the addition of the Intercollegiate Press service and the Associated Collegiate Press service. Instead of being strictly a local paper, the Triangle this year carried national collegiate news.

Members of the editorial staff this year have been Lawrence Evans, editor; Mildred Holsapple, associate editor; Burkert Friedersdorf, sports editor; Louise Pavey, copy editor; William Faulds, news editor; Evelyn Gardner, women's sports editor; Marcus Brooner, assistant men's sports editor; Helen Merz, society editor; and Anne Robertson, columnist.

The business department included Bernard Corson, business manager; Donald Moysey, advertising manager; Robert Foster, circulation manager; with Clifford Murphy, Adolph White, and Robert Smith, assistants.

Miss Mary Louise Fitton again acted as Faculty Adviser to the Triangle.





HERMAN ALLEN, Editor HEROLD LOSCHE, Bus. Mgr.

Revonah

This year the Revonah staff has attempted to make changes in the plan of the year book so as to keep within the bounds of a well defined financial budget. Yet the task of portraying the life of Hanover College remained with the staff. The pictures and events contained in this book represent a humble attempt to record the life of Hanover College. Indeed it is a humble attempt for significant events have been omitted because of lack of space and finances. However, the Revonah staff hopes that this book will be a treasured reminder of Hanover College for the year of 1933-34.

This book has been made possible by the cooperation of the editor and business manager with the faculty adviser, Oscar K. Dizmang, who has given time and advice to the staff.

It would be unfair not to mention H. Hannah, P. Stines, G. Raney, Max Healey, A. Whallon, B. Barnes, J. Shanklin, Prof. Entorf, Miss Fitton, M. F. Hale, D. Breeding, M. Rogers, and H. Dye for their service in the compilation of this book.

The Editor and Business Manager are selected in the spring by a control board. The control board for 1933-34 consisted of Prof. Conklin, Prof. Dizmang, Miss Fitton, R. Williams, G. Burkert, J. Blankenship, and G. Ranzy.





Social Science Club

The Social Science Club was organized last year with its membership restricted to upperclassmen upon invitation. The interesting meetings of this group provide opportunity for round table discussion of problems both on the local campus and outside. The discussions concern topics and events which have a bearing upon the interest and welfare of the entire student body. Faculty sponsors of the Social Science body are Professors Mark L. Entorf, Oscar K. Dizmang, and Doctors Eliot B. Porter and Russell H. Fitzgibbon. Its president is Miss Kelso Myers.

Science Club

All students of the Science Department are welcome to membership in this organization which constitutes the scientific group of the campus. Various experiments are conducted in the meetings under the supervision of faculty members of the department. The president of the science group is Harold Malone.

Y. W. C. A. Cabinet

This group corresponds to the same governing body of the men's organization. The cabinet arranges projects which are in turn carried out in the interest of the students. The cabinet also directs plans for the annual May Day celebration which is presented in collaboration with the Y. M. C. A. The president of the women's organization is Dorothy Breeding.



Sphinx Club

The Sphinx Club was rejuvenated on the Hanover campus this year by a group of seniors. Ten years ago the organization was founded here but died shortly after its birth.

The Club is composed of nine upperclassmen and one faculty member, Dr. Fitzgibbon. It has for its function the making of freshman rules and regulations.

The president of the club this year is Bernard Corson, a member of the Phi Delta Theta Fraternity.

Teacher Training Sophomores

This year marks the end of the college life for the teacher training Sophomores. They have been here but two years, yet they have left an indelible mark upon the student life of Hanover College. They are now ready to instruct youngsters in the rudiments of education. With more and more emphasis being placed upon the early training of children, these students have been especially prepared to meet a very difficult task.

Independent Women

This organization which was formed last year is for the purpose of uniting those women of the College who are without affiliations. Regular meetings are held and social functions in the form of parties are provided by the members. The head of the organization this year is Miss Ruth Smith.



Y. M. C. A. Cabinet

This cabinet is the governing body of the Young Men's Christian Association on the Hanover Campus. Its chief function is to discuss and decide upon constructive measures which are of direct interest to the students as a body. The local organization is one of the oldest college organizations of its kind, being founded in 1870. Dr. Eliot B. Porter acts as faculty adviser; the president of the cabinet is Eller Lutes.

Die Deutsche Gesellschaft

Die Deutsche Gesellschaft is one of the three language groups on the campus. Its chief function is to cultivate an interest in the German language and its meetings and programs are directed toward this end. Eligibility for membership is a "B" average for students in the German department. The organization is under the faculty sponsorship of Miss M. Garten; Floyd Neerimer is president.

Le Cercle Francais

The French Club, under the direction of Miss Jean Anderson, departmental head, is maintained for the purpose of increasing the conversational aspects of the language among the members of the group. A constant limited membership is maintained and only students evincing particular interest in the language are selected. The club is presided over by Martha Anne Hamblen.



Student Council

The legislative power of the student body is invested in this august body composed of the representatives of the various sororities, fraternities and independent groups on the campus. Matters of student welfare, taxation, and the like are placed in the hands of the council for consideration. At the present time the membership of the body has been reduced so that it now has but ten representatives, all of whom are selected from either the Senior or Junior classes. Dr. Russell M. Kutz acts in the capacity of faculty adviser to the body which is headed by Hilbert Cofield.

Dramatic Club

The Thespian talent of the College is recognized by membership in the Dramatic Club under the supervision of Miss Kate Andrews. Fall semester try-outs are held for the purpose of selecting new members. The first semester presentation of the club was "East Lynne". Miss Andrews also coaches the productions of the organization. Langdon Gueotal is technical director and James Snyder is president.

La Sociedad Espanola

All students of the Spanish Department are eligible for membership in this language organization. The group was originally founded and continues at the present time under the direction of Miss Garten. Regular meetings are held, and a Spanish dramatization is presented to the entire student body each semester. Herman Allen is president.



Varsity Debating

This year's varsity debating squad with but two veterans on the three teams was quite successful. The proposition used in the debates was that used in all schools which are members of the Indiana League and dealt with Japan's policy in the Far East. The forensic season opened with a tourney attended by over forty Mid-Western colleges and universities at North Manchester. Three teams, two negative and one affirmative, argued for Hanover. Of these the best record was made by the negation composed of Herman Allen, Richard Williams, and Max Healey with the latter as captain. Losing to Manchester they went on to gain decisions over Evansville, Taylor, and Wabash Colleges. The affirmative captained by Lewis Thomas with Francis Johnson and Hendon Harris as colleagues won from both Purdue and Bowling Green. A second triumph over Purdue was scored by the other negative composed of Evelyn Crim, Jack DeWitt, and Burkert Friedersdorf; the latter was captain. The first defeat on the regular schedule was suffered at the hands of an affirmative team from Waynesburg College of Waynesburg, Pennsylvania. The Hanover affirmative lost to Butler, gained a decision over Rose Poly and lost to Anderson College. A negative team composed of Allen, Thomas, and Friedersdorf later won from Oakland City. On March ninth a debate was held in Indianapolis against Butler University and broadcast over station WFBM. The Hanover negative was upheld by Healey and Allen; no decision was rendered. A final tally of all the contests by the three teams shows eight won and ten lost. Prof. Paul S. Conklin, head of the English Department, was coach and sponsor of the squad.

Freshman Forensics

A series of intramural debates was opened on November second in which only freshmen were allowed to compete. The question was the same as that used later in the season by the varsity squad in intercollegiate competition. The freshmen of Beta Theta Pi emerged victorious after an elimination series in which they won over four opponents. The freshman women of Alpha Delta Pi met the winners in the final contest the first week in December. Each organization on the campus, inclusive of the men's and women's independent groups, was represented by a team. This was the first year that the educational department of the college participated. The winning team of Beta Theta Pi included Ben Hudelson, Eldon Campbell, and Robert Barnes. The runners up were Nelle Milholland, Sally Scott, and Marjorie Mitchell. Burkert Friedersdorf coached the Beta freshmen. Coaches of other teams in the tourney were Lewis Thomas, Ruth Smith, William Graler, Curtis Hodgens, Hendon Harris, Max Healey, Herman Allen, Richard Williams. Williams was coach of the Alpha Delta Pi team.

Intramural Forensics

Following the freshman debates a tourney was held for the men of the College. In this series a new question was introduced. The respective teams argued the pro and con of a federal policing unit. The Independent Men of the College won this tourney for the second consecutive year by defeating the Beta Theta Pi team in the final debate of the elimination series. The winners affirmed the proposition in the final debate which was judged by Professor Entorf. The Independent team was composed of Hendon, Harris, Francis Johnson, and Edward Boone. The Beta team included Herman Allen, Lewis Thomas, and Burkert Friedersdorf. Of the six men participating in the final contest five were later selected for the varsity intercollegiate squad of the school. This tourney, as all forensic competition, was under the supervision of Professor Paul S. Conklin, head of the department of English.



Educational Club

The Educational Club is composed of members who are enrolled in the Normal courses of the Education Department. Programs of a varied nature are given in the regular meetings. Miss Anna Marie Fisher, faculty member, is adviser to the group.

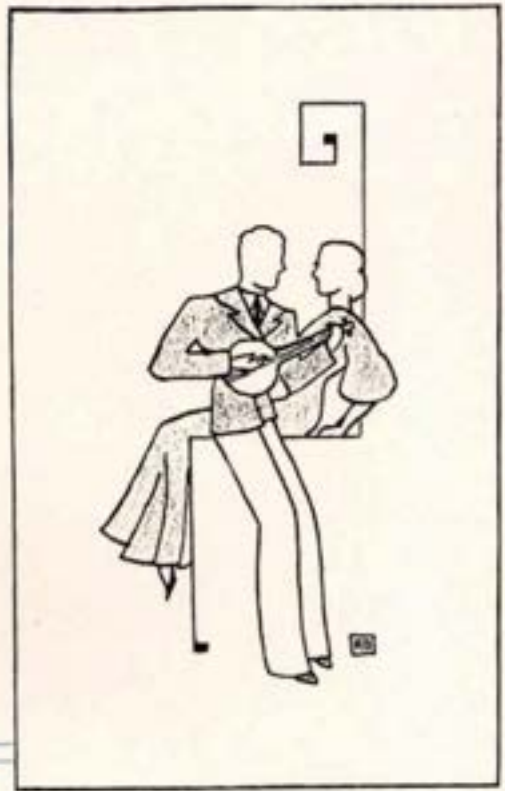
Band

The membership of the Hanover College Band this year has been larger than ever before. Membership is open only to men and programs are provided in chapel. Uniforms were provided last year by the Student Council. The band is directed by Professor Poland. Forrest Couch is president.

Chapel Choir

The Chapel Choir under the direction of Professor Maxwell Poland is composed of both men and women in the college. The regular function of the choir is to provide musical programs for the Sunday morning services in the local church. Other programs are presented in the schools and churches of this section of the state. This year a radio broadcast was also effected over station WHAS in Louisville. Iris Wimer is president of the choir.





ORGANIZATIONS



Coombs
Maze

Mannix
Faulds

Blankenship
Allen

Evans
Thomas

Raney
Monroe

Gwin
Smith

Interfraternity Council

The Interfraternity Council is composed of representatives of the four national fraternities on the campus. The membership of the organization numbers twelve.

The function of the Council is to handle problems which arise among the various organizations represented. It also has the function of disciplining its members and passing on the initiation of members into the various groups.

Pan-Hellenic Council

The Pan-Hellenic Council is an organization made up of representatives of the two sororities on the campus. It has charge of rushing and rushing rules and the disciplining of its member groups.

There are four women on the Council, elected by their respective organizations. The presidency of the Council is rotated.

Clark



McKeand



Pavey



McKay





Beta Theta Pi

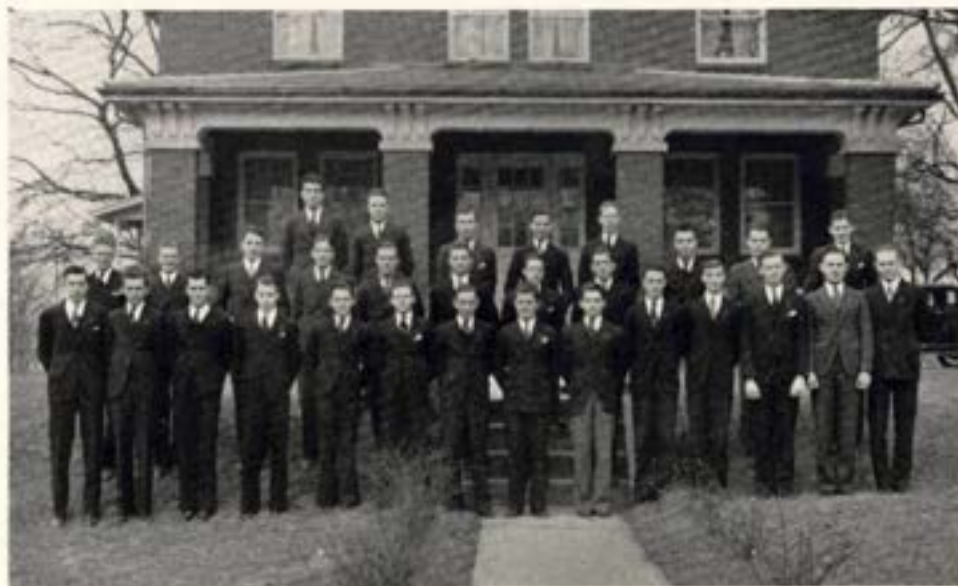
FOUNDED AT MIAMI UNIVERSITY 1839

COLORS: Pink and Blue

FLOWER: American Beauty Rose

IOTA CHAPTER

Installed 1853



Beta Theta Pi

IOTA CHAPTER

SENIORS

Fritz Chapman, Madison, Ind.
Jack Foster, Attica, Ind.
William Faulds, Cincinnati, O.
Keith Malsbary, Lafayette, Ind.
Horace Ransdell, Connersville, Ind.

JUNIORS

Elbert Lasher, Seymour, Ind.
James Shanklin, Hammond, Ind.
Herman Allen, Kokomo, Ind.
George Burkert, Indianapolis, Ind.
Orville Mann, New Albany, Ind.
Edgar Burns, Ford City, Pa.

SOPHOMORES

John Young, Hanover, Ind.
Lewis Thomas, Detroit, Mich.
Paul Martin, Santa Claus, Ind.
Burkert Friedersdorf, Madison, Ind.
Hugh Espey, Rising Sun, Ind.
Edward Billingsley, Rising Sun, Ind.
Arthur Whallon, Richmond, Ind.

FRESHMEN

| | |
|----------------------------------|-----------------------------------|
| Richard Millen, Huntington, Ind. | Wyatt Norvell, Campbellsburg, Ky. |
| Ben Hudelson, Paoli, Ind. | Robert Barnes, Winchester, Ind. |
| Fred Logan, Plymouth, Ind. | Robert Cox, Plymouth, Ind. |
| Jack Hannah, Rising Sun, Ind. | Eldon Campbell, Dundee, Ill. |
| Roy Barnes, Winchester, Ind. | Jack DeWitt, Newcastle, Ind. |
| Robert Hinds, Salem, Ind. | Joseph Moore, Huntington, Ind. |
| Roland Miller, Plymouth, Ind. | |





Phi Gamma Delta

FOUNDED AT WASHINGTON AND JEFFERSON COLLEGE 1848

COLORS: Royal Purple

FLOWER: Purple Clematis

TAU CHAPTER

Installed 1864



Phi Gamma Delta

TAU CHAPTER

SENIORS

Hilbert Cofield, Madison, Ind.
Forrest Couch, Rochester, N. Y.
William Ulbrich, Gardner, Ill.
Frank Menozi, Gardner, Ill.
John Gwin, Connersville, Ind.
Henry Coombs, Indianapolis, Ind.

JUNIORS

Wolford Allen, Pleasureville, Ky.
Herold Losche, Indianapolis, Ind.
Buford Mannix, Charleston, Ind.
Richard Williams, Canton, O.
Edward Claxton, French Lick, Ind.
Charles Hutchings, Indianapolis, Ind.
Robert Graham, Indianapolis, Ind.

SOPHOMORES

Langdon Gueotal, Indianapolis, Ind.
Ralph Holmes, Chicago, Ill.
Mark Butler, Milton, Ky.
Max Healey, Indianapolis, Ind.
Aldridge Johnson, La Canada, Calif.
Carl Hammond, Danville, O.

FRESHMEN

George Borneman, Elkhart, Ind.
Arthur Graffis, Elkhart, Ind.
Philip Allison, Gardner, Ill.
Thomas Gates, Brookville, Ind.
Howard Edgar, Danville, O.
Horace Arnold, Petersburg, Ind.
Charles Knobf, South Bend, Ind.
Robert Rupley, Columbia City, Ind.
Roger Sanders, Warsaw, Ind.
Fred Ward, Warsaw, Ind.
Horace Hooten, Cincinnati, O.
William Hargraves, Newburgh, Ind.
Harry Stringfellow, Carrollton, Ky.





Phi Delta Theta

FOUNDED AT MIAMI UNIVERSITY 1848

COLORS: Argent and Azure

FLOWER: White Carnation

INDIANA EPSILON CHAPTER

Installed 1868



Phi Delta Theta

INDIANA EPSILON CHAPTER

SENIORS

Donald Moysey, Berwyn, Ill.
Earl Thureson, Berwyn, Ill.
Bernard Corson, Berwyn, Ill.
Joe Maze, Westville, Ill.
James Snyder, Ashland, Ky.
Lowell, Anderson, Berwyn, Ill.

JUNIORS

Gordon Raney, Jeffersonville, Ind.
Paul Stines, Westville, Ill.
Robert Schuler, Henryville, Ind.
Vincent Guenther, Jeffersonville, Ind.
William Makowsky, Sellersburg, Ind.
James Corkey, Logansport, Ind.
Francis Warn, Milan, Ind.
Ernest Pease, LaPorte, Ind.
Ray Hurst, Cleveland, O.
Dillon Herzer, Gary, Ind.

SOPHOMORES

Robert John Smith, South Bend, Ind.
Edwin Anderson, Columbus, O.
Ray Sonneborn, LaPorte, Ind.
Charles McHarry, Madison, Ind.
Cleo Baker, Rising Sun, Ind.

FRESHMEN

Adron Sullenger, Boonville, Ind.
Charles Welker, Jeffersonville, Ind.
Howard Welker, Jeffersonville, Ind.
Robert Dav's, Lexington, Ind.
Eugene Vail, Scottsburg, Ind.
Will Whamond, LaPorte, Ind.
John Thomas, South Bend, Ind.
Charles Potter, Madison, Ind.
Carl Cunningham, Concrete, Wash.
Charles Meng, Ghent, Ky.
George Grossnickle, Elkhart, Ind.
Robert Horton, Cleves, Ohio
Neil Manaugh, Hanover, Ind.
Charles Reeder, Jeffersonville, Ind.
Mercer Gingles, Hardburly, Ky.
Gilbert Dotson, Elkhart, Ind.
Tommy Hoop, Shelbyville, Ind.





Theta Kappa Nu

FOUNDED AT DRURY COLLEGE 1924

COLORS: Crimson, Argent, and Sable

FLOWER: White Rose

INDIANA ALPHA CHAPTER

Installed 1924



Theta Kappa Nu

INDIANA ALPHA CHAPTER

SENIORS

William Warn, Milan, Ind.
Lawrence Evans, Columbus, Ind.

JUNIORS

| | |
|--------------------------------------|---------------------------------|
| John Blankenship, Indianapolis, Ind. | Harold Flick, Butlerville, Ind. |
| Charles Earnshaw, Okeana, O. | William Graler, Cincinnati, O. |
| Walter Martin, New Salisbury, Ind. | Vincent Young, Osgood, Ind. |
| Harold Denton, Butlerville, Ind. | Gerald Miner, Scottsburg, Ind. |

SOPHOMORES

Donald Medcalf, Dale, Ind.
Jesse Monroe, Rising Sun, Ind.
Ralph Schoolcraft, Butlerville, Ind.
Clifford Murphy, Scottsburg, Ind.
Robert Foster, Indianapolis, Ind.

FRESHMEN

| | |
|------------------------------------|------------------------------|
| Marcus Brooner, Dale, Ind. | Robert Gillis, Howe, Ind. |
| Donald Martin, New Salisbury, Ind. | Paul Hamilton, Boston, Mass. |
| Nelson Gillis, Howe, Ind. | James Spencer, Warsaw, Ky. |



Alpha Delta Alpha

FOUNDED AT COE COLLEGE 1919

COLORS: Red and White

FLOWER: Red Rose

ZETA CHAPTER

Installed 1928



Alpha Delta Alpha

ZETA CHAPTER

SENIORS

Eller Lutes, Muncie, Ind.

JUNIORS

Clifford Adams, Rockville, Ind.
Adolph White, Mexico D. F., Mexico
Harvey Hannah, Bloomfield, Ind.
David Hancock, Goodland, Ind.
Floyd Neerimer, Salem, Ind.

SOPHOMORES

Frederick Warn, Milan, Ind.
Curtis Hodgens, Eden, Ala.

FRESHMEN

John Hannah, Bloomfield, Ind.
Elton Schlemmer, Wabash, Ind.
Elvin Gelvin, Versailles, Ind.
Edmond Bottorf, Columbus, Ind.
Douglas Douglas, Warsaw, Ind.
Harold Comp, Lake Village, Ind.
Karl Heismann, College Corners, O.



Alpha Delta Pi

FOUNDED AT WESLEYAN COLLEGE 1851

COLORS: Blue and White

FLOWER: Violet

PHI CHAPTER

Installed 1913



Alpha Delta Pi

PHI CHAPTER

SENIORS

Marjorie Nighbert, Hanover, Ind.

JUNIORS

Evelyn Crim, Madison, Ind.

Thelma Ernest, Seymour, Ind.

Caroline McKay, Brooksbury, Ind.

Mary E. McKeand, Madison, Ind.

Mary Frances Hale, Shelbyville, Ind.

SOPHOMORES

Rosabelle Bridgins, Huntington, Ind.

Janice Clark, Winchester, Ind.

Annette Fewell, Aurora, Ind.

Geneva Furnish, Henryville, Ind.

Polly Gill, New Albany, Ind.

Martha Anne Hamblen, Winchester,
Indiana

Mary E. Kellogg, Fort Wayne, Ind.

Helen Merz, Cincinnati, O.

Lucille Shacklette, Jeffersontown,
Kentucky

Olive Smith, Madison, Ind.

Mary Helen Taff, Madison, Ind.

Margaret Wiley, Scottsburg, Ind.

Mildred Holsapple, Salem, Ind.

FRESHMEN

Marguerite Brumbaugh, Browns-
town, Ind.

Mary M. Downs, Boonville, Ind.

Helen Dye, New Albany, Ind.

Frances Gabel, Hanover, Ind.

Marilou' se Harmon, Madison, Ind.

Dorothy Haupt, New Albany, Ind.

Nelle Milholland, Lawrenceburg,
Indiana

Marjorie Mitchell, Thorntown, Ind.

Elizabeth Robertson, Madison, Ind.

Sallie Scott, Thorntown, Ind.

Lillian Sellars, Chicago, Ill.

Betty V. Shelby, Charlestown, Ind.

Ruth Marshall, Madison, Ind.





Phi Mu

FOUNDED AT WESLEYAN COLLEGE 1852

COLORS: Rose and White

FLOWER: Enchantress Carnation

RHO CHAPTER

Installed 1913



Phi Mu

RHO CHAPTER

SENIORS

Velma Dilts, Rising Sun, Ind. Mary Alice Owings, Vevay, Ind.
Marylou Clark, Ladoga, Ind. Thelma Price, Sunman, Ind.
Sarah E. Henning, Hanover, Ind.

JUNIORS

Louise Pavey, Martinsville, Ind. Elizabeth Calhoun, Kokomo, Ind.
Dorothy Breeding, Edinburg, Ind.

SOPHOMORES

Mary McCulloch, Jeffersonville, Ind. Margaret Scott, Columbia City, Ind.
Libby Baird Chapman, Madison, Ind. Mona Beery, South Bend, Ind.
Martha Rady, Jeffersonville, Ind. Anne Robertson, Elkhart, Ind.
Vonnie Raymond, Henryville, Ind. Myra Davis, Southport, Ind.
Mary Dee Snyder, South Bend, Ind. Katherine Hines, Southport, Ind.
Marion Marshall, LaPorte, Ind. Ladema Denton, Butlerville, Ind.
Josephine Taggart, Hanover, Ind. Willa Grey Bruce, Moores Hill, Ind.
Ruth Perin, Cincinnati, O.

FRESHMEN

Mildred Wood, Cleves, O. Dorothy Scholz, Mitchell, Ind.
Jean Baker, Alexandria, Ind. Edith Gingery, Indianapolis, Ind.
Mary Alice McCullough, New
Albany, Ind. Jo Jackson, Indianapolis, Ind.
Sally Sanders, Newcastle, Ind. Florence Heisel, Elkhart, Ind.
Betty Henninger, Connersville, Ind. Doris Stalcup, Paoli, Ind.
Helen Cavanaugh, Salem, Ind. Margaret Arnold, Elkhart, Ind.
Winnifred Sanders, Warsaw, Ind.



The Goal of Liberal Education

NO definition of education has yet been formulated which commands general assent, for ideas on this, as on any other matter, are determined by personal needs, interests and points of view. There are some to whom the term primarily signifies that sort of training which develops competence in technical, vocational or professional fields, for, they maintain, a man's first duty is that of making his own living. There is, however, a kind of education which differs from this practical training in that it is more detached and inclusive, and less directly productive of immediate and material results. This type of education may rightly be termed "cultural" or "liberal," and its nurture has traditionally been regarded as the special function of the college.

A truly liberal education seeks to develop in the individual a mind which is informed, discriminating and persistently curious. It fosters the acquisition of a culture which becomes neither an article of adornment nor a badge of superiority, but which is rather a way of living. It extends the boundaries of one's knowledge, broadens one's sympathies, and develops a tolerance which is the product of understanding rather than the result of indifference. A liberal education will free the individual, in his mental life at least, from the stupid tyranny of the crowd, and will give him a capacity for self-direction through the acquisition of a rational and intelligent set of values. The educated man achieves freedom through the progressive apprehension of truth; and truth frees him from prejudice, narrow loyalties, and allegiance to futile causes.

In a word, education is neither a commodity to be purchased nor a gift to be bestowed: its essence resides in the "spirit of learning," its fruit is insight and understanding, and its goal is the complete man.

ATHLETICS





*A*THLETICS in Hanover College have at all times been encouraged as a natural expression of the play impulse, but they have not been over-emphasized to the neglect of other equally important activities. Hanover was among the first colleges in the state to take up athletics and the records of her early teams are a source of pride (even to the present students), but more important than the lists of victories is the enviable record which she has gained for good clean sportsmanship.







Coach John M. Van Liew

Coach Van Liew had wide training in the direction of athletics before coming to Hanover College to pilot the destiny of the Red and Blue Panthers. His two years here have been marked with success. The football teams have been able to compete successfully with the best teams in the state. This holds true for the basketball, track, and baseball teams. The intramural program has been expanded to include almost every popular sport known to the athletic world.

Coach Van Liew has been ably assisted by Willard Dailey.

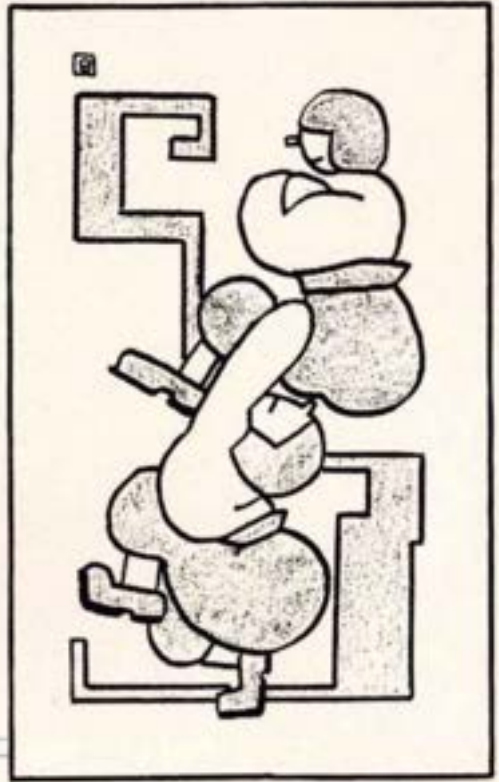
The Varsity "H" Club

In an effort to develop students with well rounded personalities, athletics were established and are maintained at Hanover College. A healthy mind is dependent upon a healthy body. The athletic program is directed towards that end and all students have equal opportunity to participate in the program as planned by the leaders.

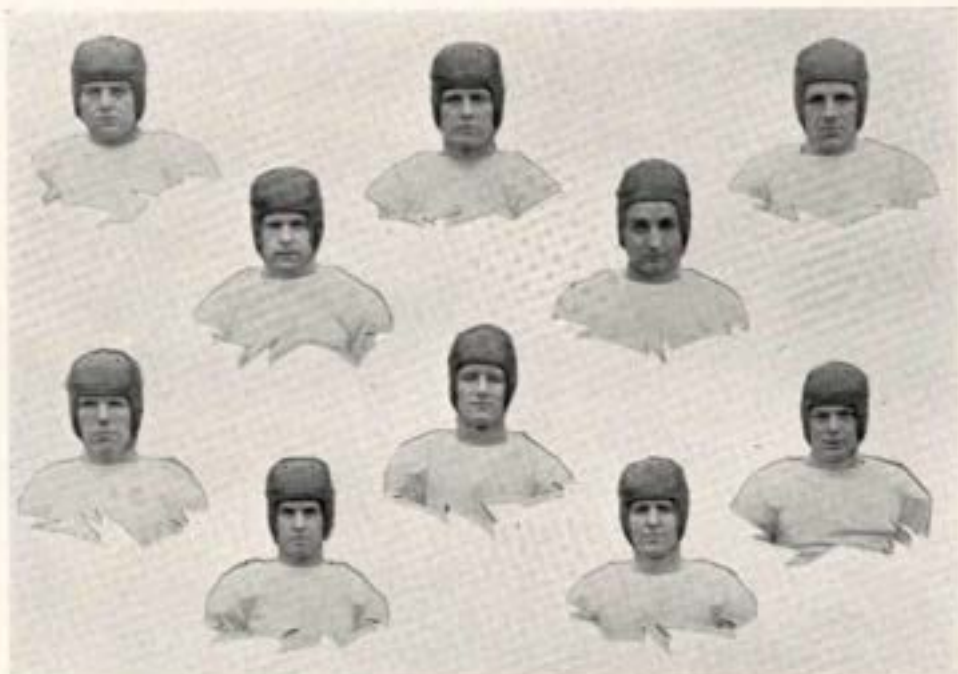
This club was formed in the year of 1927 to foster a spirit of sportsmanship among the lettermen of Hanover College.

The organization is open to any man making a Varsity "H" letter with initiation being held in the spring.





FOOTBALL



Guenther Stines Grossnickle Flick Mann
 Anderson Sonneborne Maze Blankenship Schuler

Football 1933

Just before the whistle blew for the beginning of each game last fall, the red Panthers rushed out onto the gridiron and the spectators saw the best team to represent Hanover college on the field since the 'eighties when the modern game of football began to evolve.

Coach Van Liew and Assistant Coach Bill Dailey eyed their bunch of boys with satisfaction before every tilt, and they had confidence. The boys never failed to do what was expected of them, and a bit more, which was characteristic of them. The team loved the game and they fought just as hard and cleanly during the practice scrimmages as they did during the intercollegiate frays. They needed no blustering pep talk before the game or between halves about doing or dying for the old school. They already had what was necessary—the old fight!

After two weeks of practice, the first test was put to the varsity in the form of the "machine-like" Rose Poly Engineers. The blistering hot afternoon slowed up both teams and Hanover was forced to rely on reserve material before Rose Poly was downed by the uneasy margin of 12-6.

Before the Miami game, the students lacked confidence in their team's ability to defeat the mighty Ohio aggregation. Imagine their embarrassment as well as delight when they heard the final score of 14-0 in favor of Miami instead of 50-0 which had been predicted. The forward wall was impregnable and the opponents resorted to forward pass plays to score.

Dad's Day brought out a crowd of proud Dads who watched their sons trounce Oakland City 13-7 in another close tussle. This was the only night tilt on the schedule.

The first tilt in which the Hanover team worked harmoniously like a machine was the Earlham game. The score after the first quarter was 26-0, and the second team was run in for experience. They fought on an even basis until the Quakers managed to score once, and



Dailey, assistant coach Hay Gwin Pease Head coach, Van Liew
 Edgar Arnold Hammond Denton Allen, manager

the first eleven were sent in again. Three more touchdowns were run up before the final whistle. Score 40-6.

DePauw, undefeated and unscored on, had the stiffest fight of their entire season before they eked out a 12-0 decision. After the game, the Methodists admitted they had the breaks and were lucky to win. Watch out for the 1934 season, Old Gold and Black!

Two weeks of rest put a keen edge to the Panther's claws, and Armistice Day was celebrated by another victory. Old Wabash was the victim 20-12.

Homecoming Day brought back alumni who watched their old Alma Mater put the clamps to Ball State 20-0. Probably the added incentive of a Monday holiday induced the players to do their best.

Finis was put on the 1933 season when the squad left for Charleston, Illinois to play the Eastern Illinois State Teachers in an interstate game. Hanover won for the second successive year, this time by the score of 33-0.

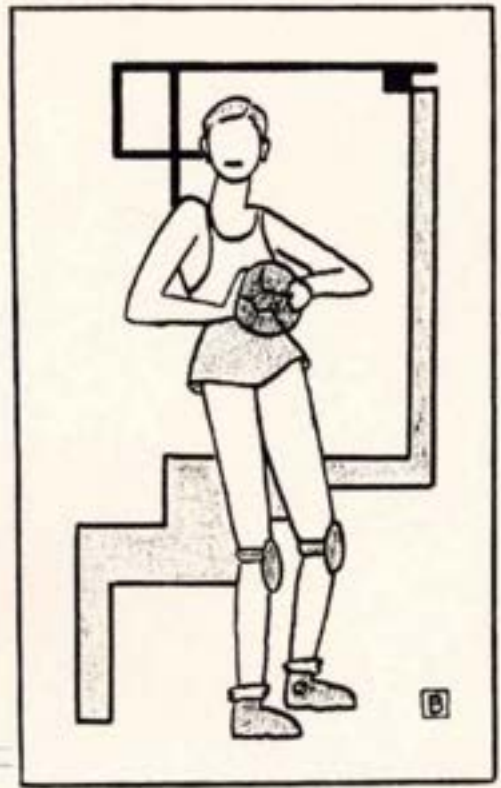
A total of 138 points to the opponents' 57 was run up in a schedule of eight games, six of which were won. Hay, signal caller, was the high scorer of the team with sixty counters.

On the whole, the entire team shared in the glory that was attributed to them by the school, the coach, the fans, and the newspaper sports writers. This was a year when the football followers had to consider Hanover as one of the three outstanding secondary colleges in Indiana, alongside of DePauw and Valparaiso. Individually the sports writers of the Indianapolis papers honored some of the varsity by selecting them on their All-State teams. John Fox, Jr., of the Indianapolis News selected Paul Stines at the guard position on his All-State team. John Gwin was placed at tackle on the second team, and Jerry Hay at half back on the third team. Vincent Guenther, center, received honorable mention. The Indianapolis Star selected Gwin and Hay on the first team of the State Secondary College eleven and Maze, halfback, on the honorable mention list. The Indianapolis Times picked Stines and Hay on their State Secondary College eleven, Gwin on the second, and Guenther received honorable mention.

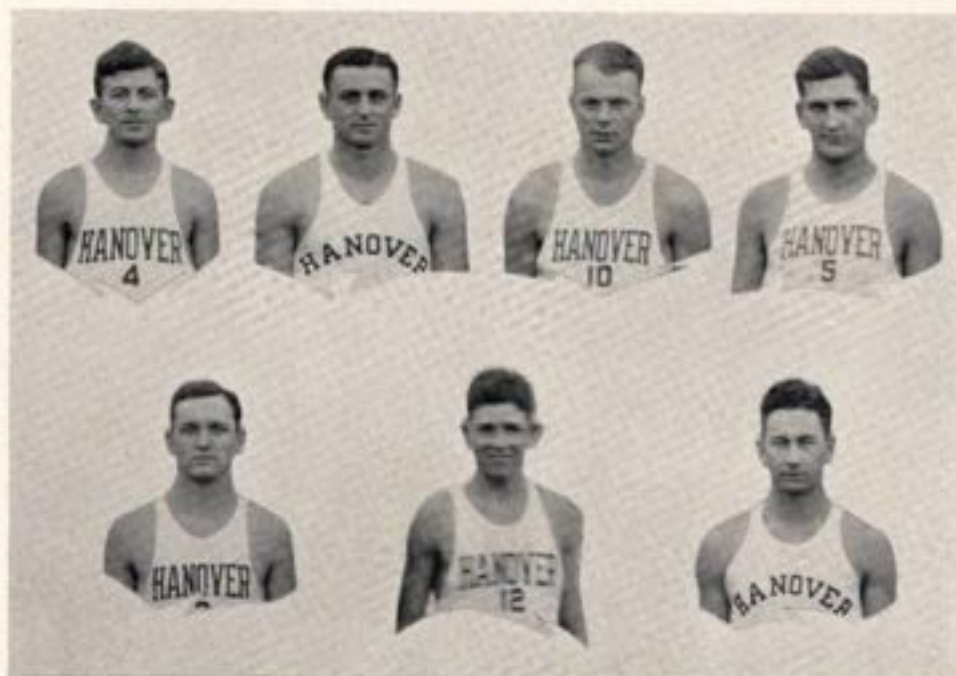
1934 Schedule

| | | | |
|----------|---------------------------|-------|-------|
| Sept. 29 | Wabash | ----- | There |
| Oct. 6 | Earlham | ----- | Here |
| Oct. 13 | Miami Univ. | ----- | There |
| Oct. 20 | DePauw | ----- | There |
| Oct. 27 | Ohio Univ. (Pending) | ----- | There |
| Nov. 3 | Open | | |
| Nov. 10 | Evansville | ----- | Here |
| Nov. 17 | Ball State | ----- | There |
| Nov. 24 | Georgetown | ----- | Here |
| Nov. 29 | Univ. of Florida (Pendng) | --- | There |





BASKETBALL



Herzer

Pease

Menozi

Raney

Schuler

Gwin

Denton

Basketball 1934

Another fair season in the way of athletics, was the basketball season which closed with eight wins and seven losses. Considering the class of opponents the Panther netmen tangled with, they deserve much more credit than the won and lost column would indicate. The extended football season hampered the early practice sessions because three of the first five basketball men were playing varsity football and insufficient team work may have caused the early season defeats. The basketeers had a fast offense averaging 32 points per game but displayed a weak man-to-man defense permitting 31 points a game to be run up against them. Only seven men played in enough games to earn letters.

SENIORS — Gwin, Menozi, Herzer

JUNIORS — Raney, Pease, Schuler

SOPHOMORE — Denton

Other men making the traveling squad were Hammond, Arnold, Manaugh, Reeder, T. Walker, F. Warn, Makowsky, Stuckey, Malsbary and Ramsey.

The managers were: Senior Mgr.—William Ulbrich;

Junior Mgr. — Paul Stines

The initial tilt of the season opened with a 49 - 43 upset over the strong Buckeye Conference team, Miami. The next three opponents proved too clever for the Hanoverites, Ball State running away with the long end of a 40 - 26 score, Central Normal winning 32 - 18, and the University of Cincinnati nosing under the wire 27 - 25.

Raney's last-second basket evened up matters with the Cincy five 34 - 33 in a return match. Spurred on by this win, the Red and Blue downed five other teams in quick succession,

University of Louisville 38 - 30, Georgetown, Ky., 43 - 17, Oakland City 34 - 28, Joliet 35 - 23, and Eastern Teachers of Illinois 43 - 38.

"Red" Money's Louisville quintet clipped the winning streak in a return tilt 29 - 25. Oakland City took advantage of another opportunity to win their return game 37 - 31. Kentucky was visited and Georgetown's long boys were again cut down 36 - 17. Central Normal's crack squad bewildered the Hanover team with their accurate shooting, every third shot swishing through the net to run up the highest score of the season 45 - 24. In the final encounter Evansville had to put out their best to win by the slim margin of 26 - 23.

Raney was high point man for the season with a total of 127. Schuler ranked second with 103 and Menozi trailed him by 2 points. Gwin with 75 points and Pease with 56 make up the remainder of the first five highest scorers.

SCHEDULE 1933 - 34

| | | | |
|---------------|-----|-----------------------------|-----|
| Hanover | 49 | Miami | 43 |
| Hanover | 26 | Ball State | 40 |
| Hanover | 18 | Central Normal | 32 |
| Hanover | 25 | Cincinnati | 27 |
| Hanover | 34 | Cincinnati | 33 |
| Hanover | 38 | Louisville | 30 |
| Hanover | 43 | Georgetown | 17 |
| Hanover | 34 | Oakland City | 28 |
| Hanover | 35 | Joliet | 23 |
| Hanover | 43 | Eastern Ill. Teachers | 38 |
| Hanover | 25 | Louisville | 29 |
| Hanover | 31 | Oakland City | 37 |
| Hanover | 36 | Georgetown | 17 |
| Hanover | 24 | Central Normal | 45 |
| Hanover | 23 | Evansville | 26 |
| Total | 484 | Opp. Total | 465 |



Eighty-nine



TRACK—1933

With the advent of Coach Van Liew, a track enthusiast, to Hanover College, track and field sports were revived after a several years' lapse, with excellent results. The thinly-clad enaged in four dual meets and the Little State Meet at DePauw. The dual meets resulted in victories for the Panthers. Nineteen points were scored at the Little State, to finish fourth, close behind DePauw, Butler, and Earlham. Hay won the javelin and broad jump events; Becker the shot put and a third place in the discus throw. Smythe placed second behind Jerry, in the broad jump, and Martin gathered a point in the javelin throw. Men were sent to the Big State meet. Only Hay managed to eke out a point through his specialty, the javelin.

The relay team out-distanced their rivals in three of four races, losing only to Indiana Central. Jacobs, Hay, Maze, Martin, Kvetinskas, Malsbary, and Allen alternated in composing the quartet of relay men.

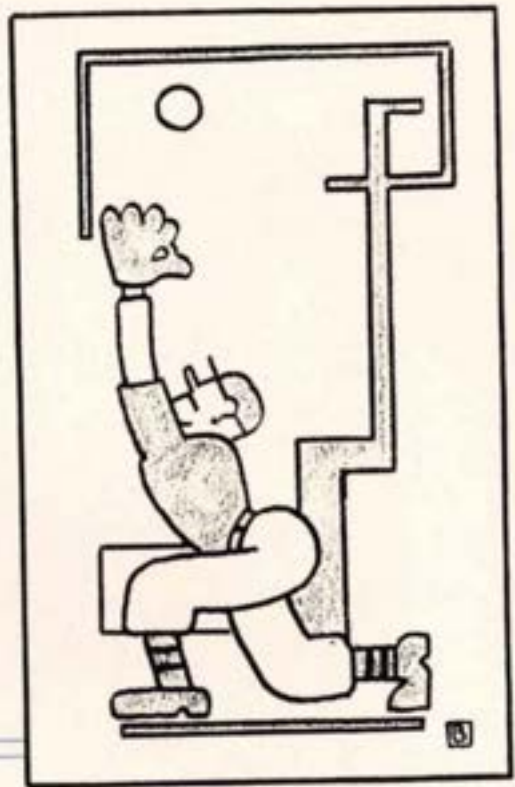
Becker, Hay, and Smythe were the consistent point gatherers: Becker winning first place in the shot put five times; three firsts, one second, one third in the discus throw. Hay hurled the javelin for four firsts and one second; and broad jumped to first place twice. Smythe received two blue ribbons in the 220; two blue ribbons and two red in the broad jump; one of each in the 100 yard dash.

Thirteen athletes received letters, only two being seniors.



TENNIS—1933

The Tennis team won three of five intercollegiate matches to enjoy a fair season. Many games on the spring schedule were cancelled because of rain and wet courts. Coach Leo Barker took charge of the Hanover racketeers and molded them into a team composed of: Herbert Burkhardt, George Burkert, Charles McHarry, Larry Evans, William Smythe.



BASEBALL



Lemen
Thureson

Gregg

Herzer

Claxton

Heichelbech
Makowsky

Baseball 1933

Because of a dearth of reserve mound artists, the 1933 baseball nine had to remain contented with winning a meager half of their games. Ike Herzer and Bill Warn, Captain-elect for 1934, were the only reliable pitchers Coach Dailey could pick from for mound duty. At the close of the year Herzer had four of the five Hanover wins under his wing. Mahlon Lemen, veteran catcher and third baseman, captained the squad. Willard Dailey, a senior member of the team coached, and was ably assisted by Professor Hyatt.

Fourteen men received letter awards of which four were seniors: Lemen, Gregg, Dailey, and Cooper, manager.

Captain Mahlon Lemen, Catcher
Earl Thureson, First Base
Willard Dailey, Second Base
John Blankenship, Shortstop
Edward Claxton, Third Base
Ike Herzer, Pitcher
William Makowsky, Catcher

Bill Warn, 1934 Captain-Elect
Charles Earnshaw, Third Base
Frank Menozzi, Field
Harold Denton, Field
Carlton Gregg, Field
James Heichelbech, Field
Robert Cooper, Manager



Cooper, manager
Dailey

Blankenship

Warr

Denton

Earnshaw
Menozi

SCHEDULE 1933

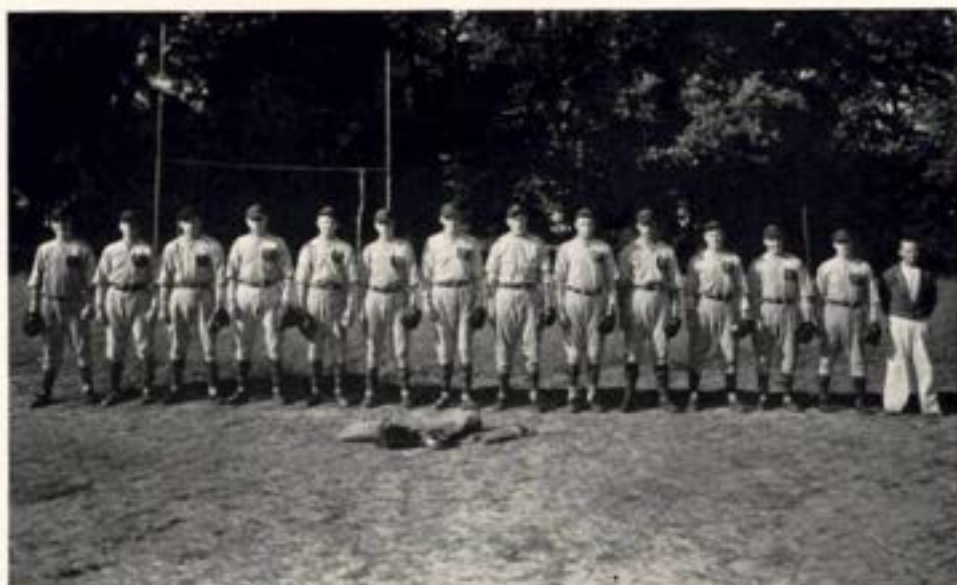
| | | | |
|--------------------|----|---------|----|
| Indiana University | 15 | Hanover | 8 |
| Oakland City | 6 | Hanover | 6 |
| Evansville | 2 | Hanover | 12 |
| Indiana University | 7 | Hanover | 0 |
| K. M. I. | 10 | Hanover | 3 |
| K. M. I. | 2 | Hanover | 3 |
| Louisville | 14 | Hanover | 9 |
| Oakland City | 3 | Hanover | 6 |
| Ball State | 3 | Hanover | 8 |
| Franklin | 8 | Hanover | 10 |
| Louisville | 9 | Hanover | 6 |

PITCHERS' RATINGS

| | Games | Won | Lost | Ties |
|-------------|-------|-----|------|------|
| Herzer | 8 | 4 | 3 | 0 |
| Dailey | 1 | 1 | 0 | 0 |
| Warr | 3 | 0 | 1 | 1 |
| Heichelbech | 1 | 0 | 1 | 0 |

1934 Schedule

| | | | |
|---------------|---------------|-------|-------|
| April 2, 3, 4 | Wabash | ----- | Here |
| April 6 | Indiana | ----- | Here |
| April 13 | Louisville | ----- | There |
| April 16 | Cincinnati | ----- | There |
| April 21 | Ball State | ----- | Here |
| April 28 | K. M. I. | ----- | There |
| May 6 | Louisville | ----- | Here |
| May 16 | Miami | ----- | There |
| May 19 | Ball State | ----- | There |
| May 26 | K. M. I. | ----- | Here |
| June 4 | Indiana State | ----- | Here |





Interfraternity Basketball

Meeting the Betas for the second consecutive year in the finals of the interfraternity basketball tournament, the Theta Kappa Nu five reversed the decision and gained possession of the Paul V. Fitzgibbon plaque. This trophy becomes the permanent possession of the organization winning it three times in succession.

An overtime game was necessary before the Beta Theta Pi boys were nosed out by a score of 33-20. In the semi-finals the Theta Nus outscored the Phi Deltas in a scoring spree, 44-30; the Phi Gams pressed the Betas hard until a final-quarter rally swept them off the floor, 32-23.

Outstanding players during the tournament were Flick and Denton, Theta Kappa Nu; Malsbary and Millen, Beta Theta Pi; Thureson and Makowsky, Phi Delta Theta; and Claxton and Hutchings, Phi Gamma Delta.

Intramural Recreation Ball

A "run away race" was won by the Phi Delta Theta recreation ball team the past season. Eight wins against no losses were chalked up against no losses in the pages of the Hanover intramural record book.

"Big Andy" Anderson, a veteran of the game, showed the intramural athletes of the opposing teams a fast ball that was almost impossible to hit. Four of the games won were shut-outs. "Little Eddie" Anderson was on the receiving end of the battery.

Trailing behind the leaders came the Phi Gams, Betas, Theta Nus, and the Independents in the order mentioned.

Intramural Basketball

A championship game between the Theta Kappa Nu and Phi Gamma Delta fraternities was necessary to play off a tie for the leadership after the regular intramural basketball schedule was over. The Theta Nus emerged victorious 35-12.

Such was the bitter rivalry during the season of play that the top-notch position changed a dozen times between the four fraternities on the campus. The Independents and the Alpha Delta Alphas proved to be the nemesis of the "big four" by upsetting them in games that were considered set-ups. A new comer, the Educational Club, improved considerably in the second round of the split season.

A team of All Stars was selected at the close of the games consisting of Flick and Earnshaw, Theta Kappa Nu; Hutchings and Claxton, Phi Gamma Delta; Millen and Malsbary, Beta Theta Pi, and Manaugh and Makowsky, Phi Delta Theta.

Intramural Volleyball

The Theta Kappa Nu and the Phi Gamma Delta teams were outstanding in the 1933-34 intramural volleyball league. The two fraternities were tied at the close of the season's play with nine wins and one loss each. The Phi Deltas, Betas, and Independents were tied for third position with four wins and six losses each. Alpha Delta Alpha was the other team in the league.

The Phi Gams started off strong at the beginning of the season and won six consecutive games before losing to the Theta Nus. The Theta Nu team after losing the first game to the Fijis, won nine in a row.

At the close of the season the following All-Star selection was chosen: Flick and Foster, Theta Nu; Williams and Hutchings, Phi Gam; Pock and Thureson, Phi Delt; Millen, Beta; Lee, Independent.

WOMAN'S SPORTS

MISS MITCHELL

Miss Viola Mitchell is director of physical education for girls, and takes charge of not only the activity classes but also teaches enough theory courses for a physical education major.

This is a meaningless stereotyped statement unless the proper perspective is given to it by going back seven years when physical education for girls was simply a sideline for some teachers, when there was no real department for female majors, when there was no equipment or money with which to get it even for the activity classes, to say nothing of the lack of a gym for the girls. With these facts in mind to contrast with the well organized physical education program for girls on the Hanover campus today, you may judge for yourself the efficiency of our director.

Miss Mitchell has been assisted by Jean Shepherd a former pupil. Jean has added enthusiasm to the girls athletic program and is qualified by experience and study to discharge her responsibility.

W. A. A. BOARD

The W. A. A. Board consists of three officers of the organization: president, vice-president, secretary-treasurer, plus a project chairman, a publicity chairman, and a social chairman. These seven members with one or more faculty advisers attempt to carry on the main business of the association, deciding on ways of making money, various publicity projects to be undertaken, and entertainment for W. A. A. such as pajama dances, walkouts, etc.

Any girl in Hanover college may be an active member of W. A. A. by the simple means of winning 100 points in not more than two consecutive sport seasons and no dues are required.





Basketball

Two intercollegiate games with the Franklin College girls marked the climax of the basketball season this year.

This competition with other colleges was begun only last year and has created considerable interest in the King of Sports. The regular intramural program is in no way interfered with, this new feat merely being used as a stimulating supplement to the color team, class and sorority tournaments.

There is no sport which draws so many participants in school here as basketball—which is clearly shown by the fact that there are beginning, intermediate and advanced classes, the two former being large enough for three or more teams each.

Hockey

Twenty-two people—eleven vs. eleven—armed in shinguards and with wooden crooks for weapons might give spectators an impression of a rather brutal game. However, ask any one of these varsity winners if you don't believe its fun.

This fall marked the third season for hockey on the Hanover campus and the interest in the game has grown by leaps and bounds.

Color team tournaments, in which every girl signed up for hockey was allowed to participate, preceded the interclass and intramural tourneys so that considerable skill was shown by the time the latter competition was scheduled.

Volleyball

Volleyball was moved up to the winter sport season to run a close second with King Basketball in courting co-ed favor this year.

Besides the usual interclass and intramural tourneys an added feature of playing "mixed games" with the fellows in the men's gym added zest to the new winter sport. A picked girls' team competed with the fellows at one time and won considerable applause if few points.

Hard overhand serves, neat set-ups and genuine "spiking" is fast revolutionizing girls' volleyball into a major sport on the Hanover campus.

Soccer

Armless Venus would have been right at home on the soccer field because when she tried to play the ball she would not have been tempted to play it with her hands, the fatal mistake for Hanoverian co-eds.

However, some of the girls become quite adept at directing the ball with their feet and a few even perform the rather brave skill of "heading" the pig skin and when one says brave it is not exaggeration.


As in hockey three kinds of tournaments; color team, class, and sorority, were run off during the latter part of the fall sport season.

Several freshmen girls proved themselves worthy of the varsity squad this year.




FEATURES





PROBABLY the most enjoyable event during the college year is the All-College boat ride held in the spring. Throughout the school year each student eagerly looks forward to the All-College boat ride held in the spring. Faculty, students, and their guests spend an enjoyable day dancing and admiring the scenery. Also in the spring the May day celebration is held. It is presided over by the May Queen chosen by the students to reign over them during the day of festivities.

From the student body certain students stand out as leaders in various activities and these are the students that have been selected as being most nearly representative of the ideals of Hanover College.



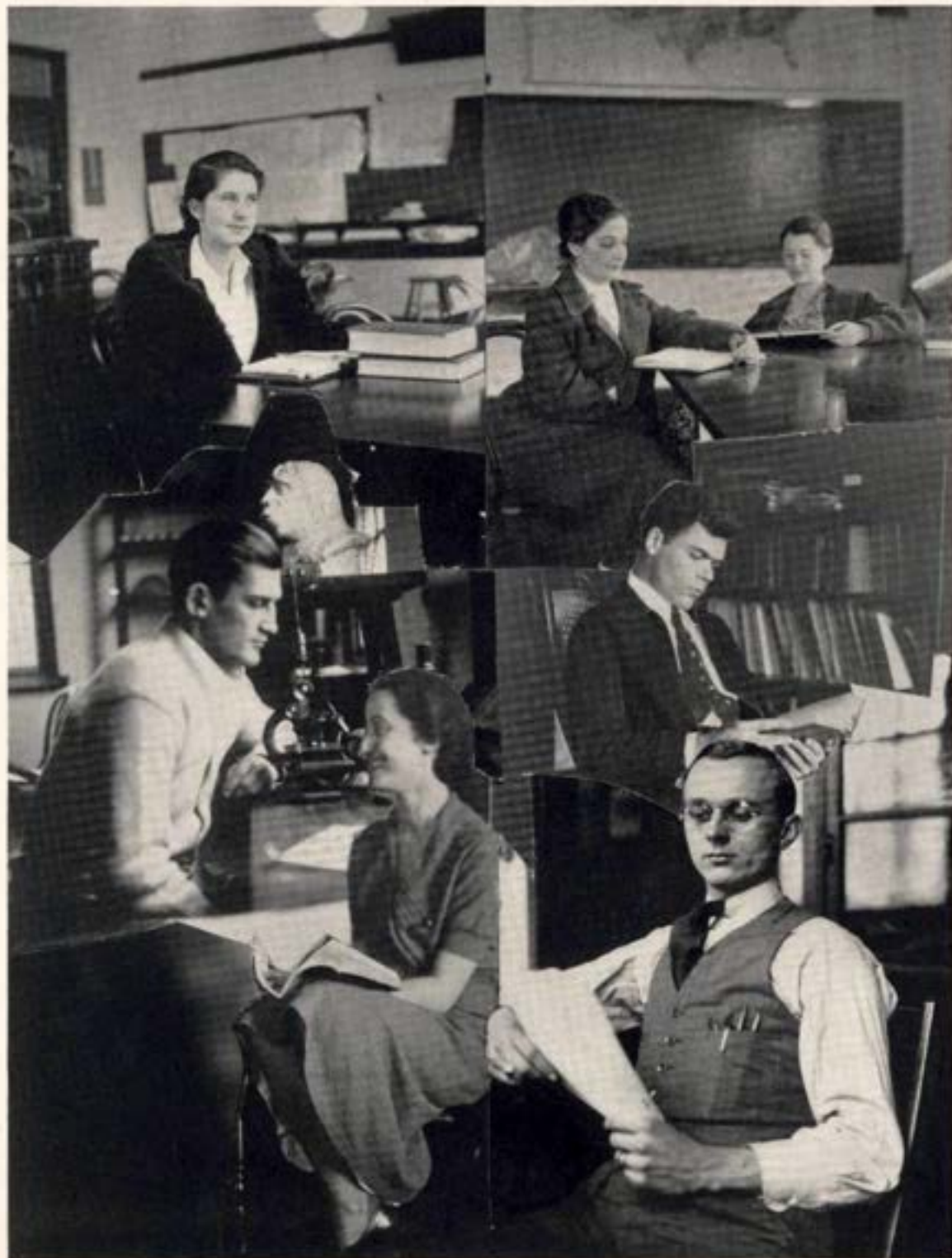


Representative Students

Fourteen Representative Students to be chosen from the junior and senior classes of the year 1933-34! Not an easy task for any group of judges, and particularly difficult for any who are so bound into our everyday lives as our own faculty. But that very difficulty makes them quite the best judges obtainable—in that theirs is truly the desire to "place credit where credit is due."

The entire junior and senior classes were considered, and in the first vote the faculty was asked to choose individually the nine students whom they thought most deserved the honor and recognition of their classmates and friends. And—from the possible eighty-six—forty-six were recommended!! It is both interesting and gratifying to know that so large a number of students have convinced at least one faculty member of their outstanding ability and contribution to campus life. Each faculty member was then told to choose the twelve students from the twenty-four, who had received two or more votes whom he most wished to approve. From these votes the fourteen highest have been chosen for the final results! The votes were all very, very close and quite a number of students missed being on the first fourteen by only one or two points. But the results are rather fortunate after all; for there are just seven fellows and seven girls, and, fate giving the seniors priority, eight seniors and six juniors!

These students have been chosen—not for their beauty and not for their intelligence, but for their good citizenship, and for their value to the college! Let's give them a hand!



MARY FRANCES HALE

MARY JO KRUMMEL *

KELSO MYERS

JOHN GWIN

ROGER WILLIAMS

DOROTHY BREEDING

LAWRENCE EVANS



HILBERT COEFIELD

JOE MAZE

MARGARET ROGERS

EVELYN GARDNER

HENRY COOMBS

THELMA ERNEST

HERMAN ALLEN



MARY JO KRUMMEL — MAY QUEEN

A

DVERTISING



Pictures Dramatize Memories * * *

* SCHOOL DAYS

... back in a flash with memories refreshed. The annual filled with pictures dramatizing school life as you lived it has an inestimable value to you as the years pass. Every school financially able should have an annual. Communicate with us for information concerning our specialized service for all kinds of school publications.

* * *

School Publication Service
INDIANAPOLIS ENGRAVING COMPANY
INDIANAPOLIS, INDIANA



PARDY'S RESTAURANT



On January 1, 1906, Pardy's Restaurant was opened to the public and to the present time has continued its policy of good foods.

Dinners or night lunches are served at reasonable prices. Their slogan,

"Pardy's, Where Friends Meet,"

is true of the students of Hanover or in Madison.

"Meet You at Pardy's"

DODD'S STUDIO

MADISON, INDIANA
121 Es. Main St.

SCOTTSBURG, IND.
Phone 150

ALL NEGATIVES KEPT ON FILE FOR
CONVENIENCE OF OUR CUSTOMERS

MAIL ORDERS GIVEN PROMPT ATTENTION

COMPLIMENTS OF

KYLE'S GROCERY

Phone 76

HANOVER

INDIANA

HANOVER GARAGE
"AT YOUR SERVICE"
Phone 25

J. E. REED
T. M. REED
REED'S LAUNDRY
No. 210 West Main St. Phone 226
MADISON, INDIANA

HANOVER COLLEGE BOOK STORE

HENRY M. LEE, Manager

NOTE BOOKS, LOOSE LEAF AND BOUND
FOUNTAIN PENS AND INKS
COLLEGE JEWELRY AND PENNANTS
ORDERS FOR BOOKS SOLICITED
USED BOOKS SOLD FOR STUDENTS

WE FURNISH ELECTRIC SERVICE

for

HANOVER

and

HANOVER COLLEGE

**MADISON LIGHT AND
POWER COMPANY**

Phone 287

MADISON, INDIANA

GENUINE GAS COKE

DOMESTIC FUEL OF

HIGHEST QUALITY

NO SMOKE

NO SOOT

LOW ASH

**MADISON UTILITIES
CORPORATION**

Phone 282

YOURS TRULY :

"THE OLD CONFEC"

HANOVER'S RENDEZVOUS

ROY — LAGRANGE & SON — PID

QUALITY FOOTWEAR

COLLEGE STYLES

STANTONS

Madison - - Indiana

CRIPE'S BAKERY

FOR

Quality Bread and Fancy Pastries

"WE STRIVE TO PLEASE YOU"

Hanover - - Indiana

GOOD COAL

R. McKIM & COMPANY

PHONE 117

MADISON, IND.

BOICOURT'S BEAUTY SHOPPE

Phone 679

MADISON

INDIANA

COMPLIMENTS OF
**EARL ELDRIDGE
GROCER**

HANOVER, INDIANA

COMPLIMENTS OF
LOWRY'S BARBER SHOP

HANOVER, INDIANA

IF IT'S FOUND
IN A DRUG STORE
INGLIS'
HAS IT

T. P. VINCENT

STAPLE AND FANCY GROCERIES
MEATS, FRUITS AND VEGETABLES

"WE APPRECIATE YOUR TRADE"

Phone: 175

Madison, Ind.

631 W. Main

COMPLIMENTS OF THE
FIRST NATIONAL BANK

MADISON, INDIANA

VAIL FURNITURE STORE
INDIANA'S LARGEST AND OLDEST

At MADISON, near Hanover College

OSCAR C. BEAR

JEWELER AND OPTICIAN

MADISON, INDIANA

WOOLEY'S

JEWELER AND OPTICIAN

EXPERT REPAIRING

LEE H. WYKOFF

QUALITY SHOE REPAIRING

MULBERRY STREET MADISON, IND.

W. H. ANGER

THE HOME OF GOOD PLUMBING

MAYTAG WASHING MACHINES AND
GENERAL ELECTRIC REFRIGERATORS

MADISON, INDIANA

N. HORUFF'S SONS

**MADISON'S LEADING SHOPPING
CENTER**

MADISON, INDIANA

C. H. ROUSCH & CO.

BOOK SELLERS AND STATIONERY

MADISON, INDIANA

COMPLIMENTS OF
**HEN & BEN
THE SHOE MEN**

MADISON, INDIANA

**SPAULDING & SCHWAB
DRY GOODS AND NOTIONS**

LADIES NOVELTIES AND COATS

Phone 29

Madison, Ind.

KNOEBEL'S

MADISON'S BEST

CLOTHING

STORE

HART SCHAFFNER & MARK CLOTHES

FRESH
FISH

DRESSED
POULTRY

FOSTER BROTHERS

MEAT MARKET

"You Must Be Satisfied"

MADISON, INDIANA

Phone 333

We Deliver

**OHIO RIVER ELEVATOR
COMPANY**

**PLYMOUTH COAL
SAND AND GRAVEL**

Phone 139

MADISON, INDIANA

COMPLIMENTS OF

BILL'S SHOE SHOP

HANOVER, INDIANA

CAMPUS CABIN

"The Latest In Fountain Service"

Phone 1511

HANOVER, INDIANA

YOUNG'S

"Always Glad to Serve You"

126 Main Street East

MADISON, INDIANA

HURRY BACK

STUDENT'S
HEADQUARTERS

In Madison

ROGER'S
DRUG STORE



COMPLIMENTS OF

MORRIS

5c and 10c to \$1.00 Store

MADISON, INDIANA

W. H. MILLER & SONS

WHOLESALE AND RETAIL

**LUMBER AND BUILDER'S
MATERIALS**

PLATE LUNCHES SHORT ORDERS

DRAKE & TAGUE

GREYHOUND CAFE

REAL HOME COOKED MEALS

COMFORTABLE ROOMS

REASONABLE RATES

GREYHOUND BUS STATION

So. Jefferson St.

MADISON - - INDIANA

Opposite Court House

REIDEL BROTHERS

GENERAL HARDWARE

"IF ITS GOOD WE HAVE IT"

MADISON, INDIANA

BOLTON MILLING CO.

GASOLINE — SERVICE STATION — OIL

ICE, FEED, AND LUMBER
CUSTOM SAWING AND GRINDING

Hanover, Indiana

Phone 3620

AUTOGRAPHS

20086

For Reference

Not to be taken from this room

IND COL
379.77213
REV

For Reference
Not to be taken
from this library

MADISON-JEFFERSON COUNTY PUBLIC LIBRARY



3 9391 00536480 5

