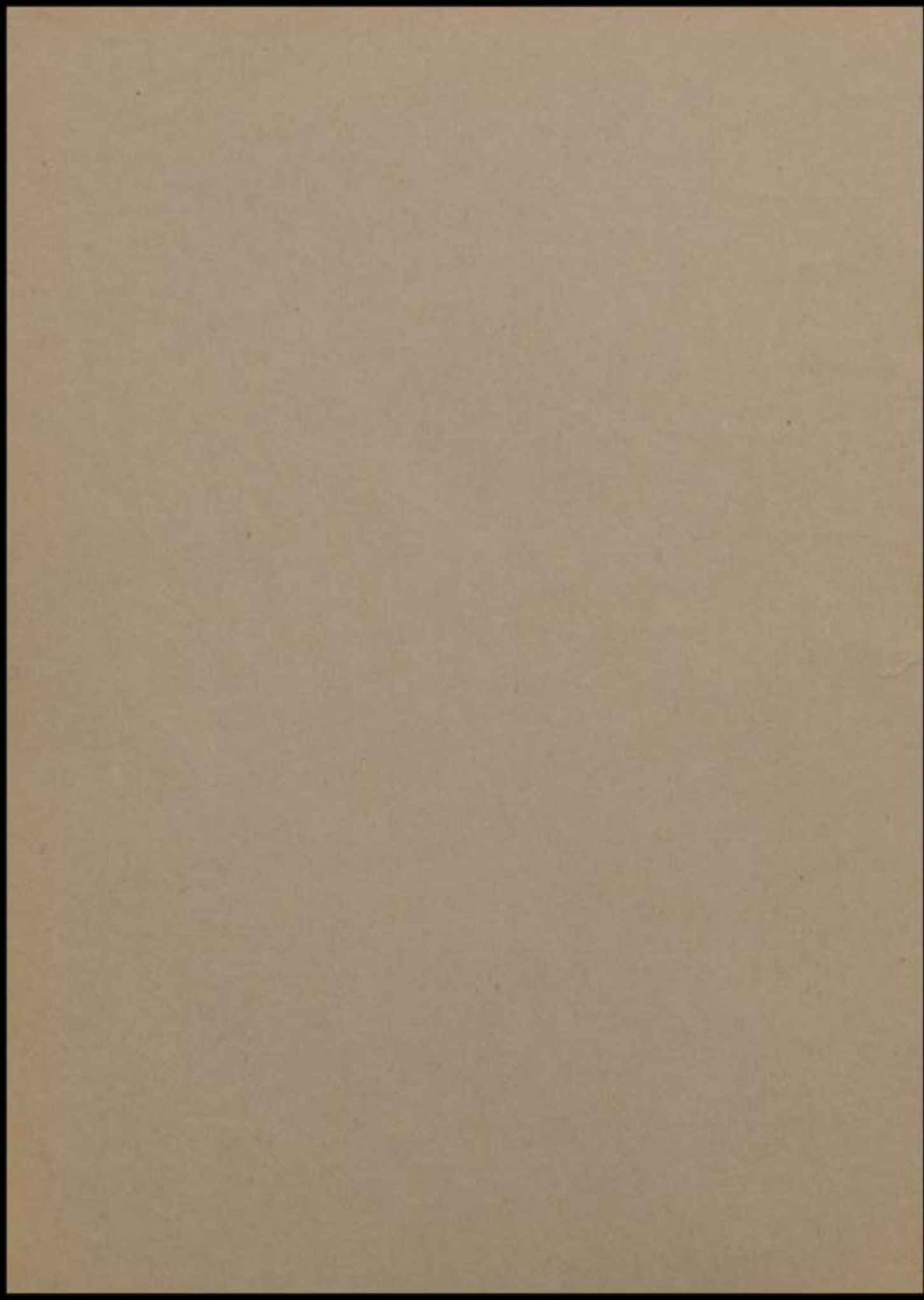
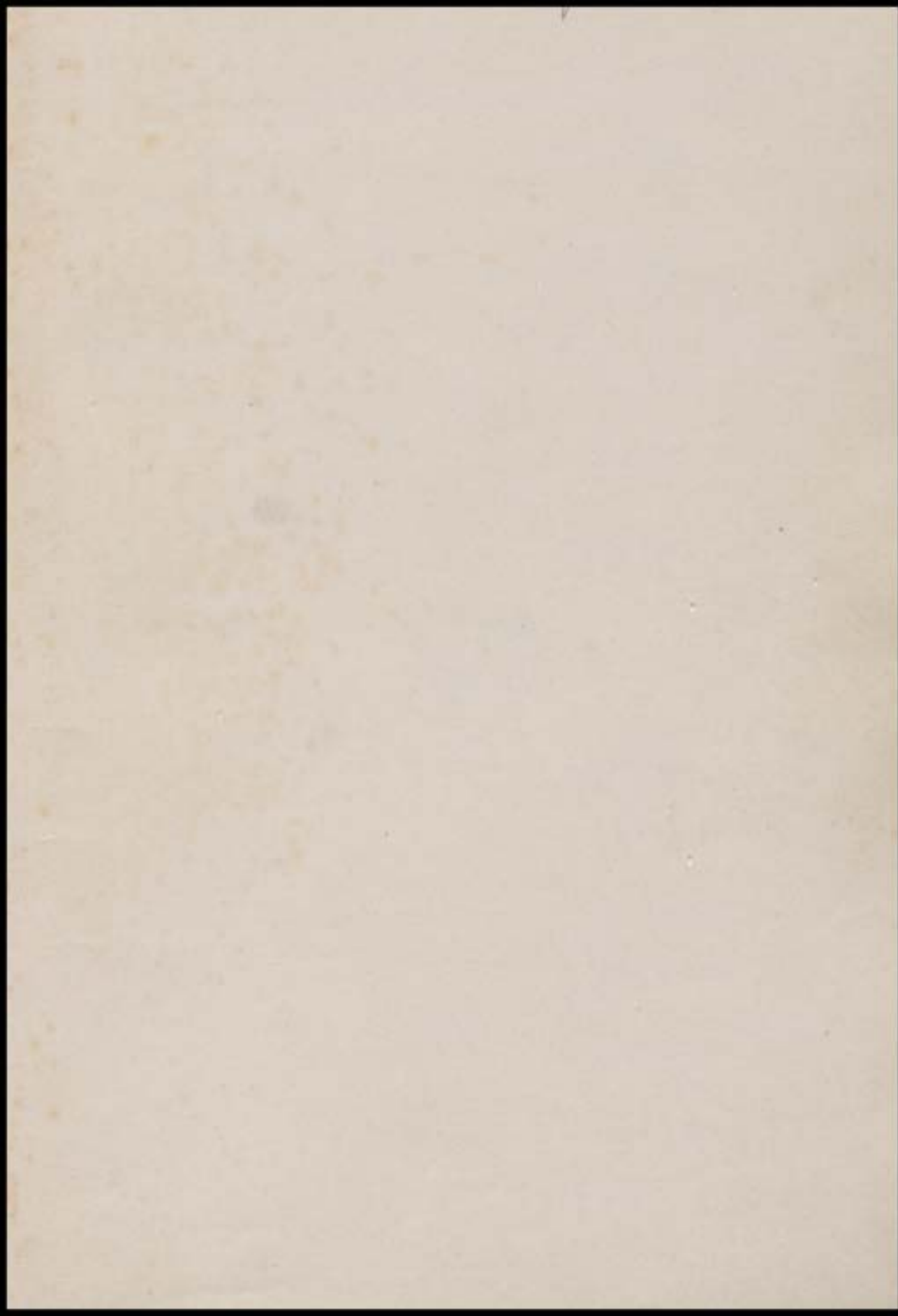
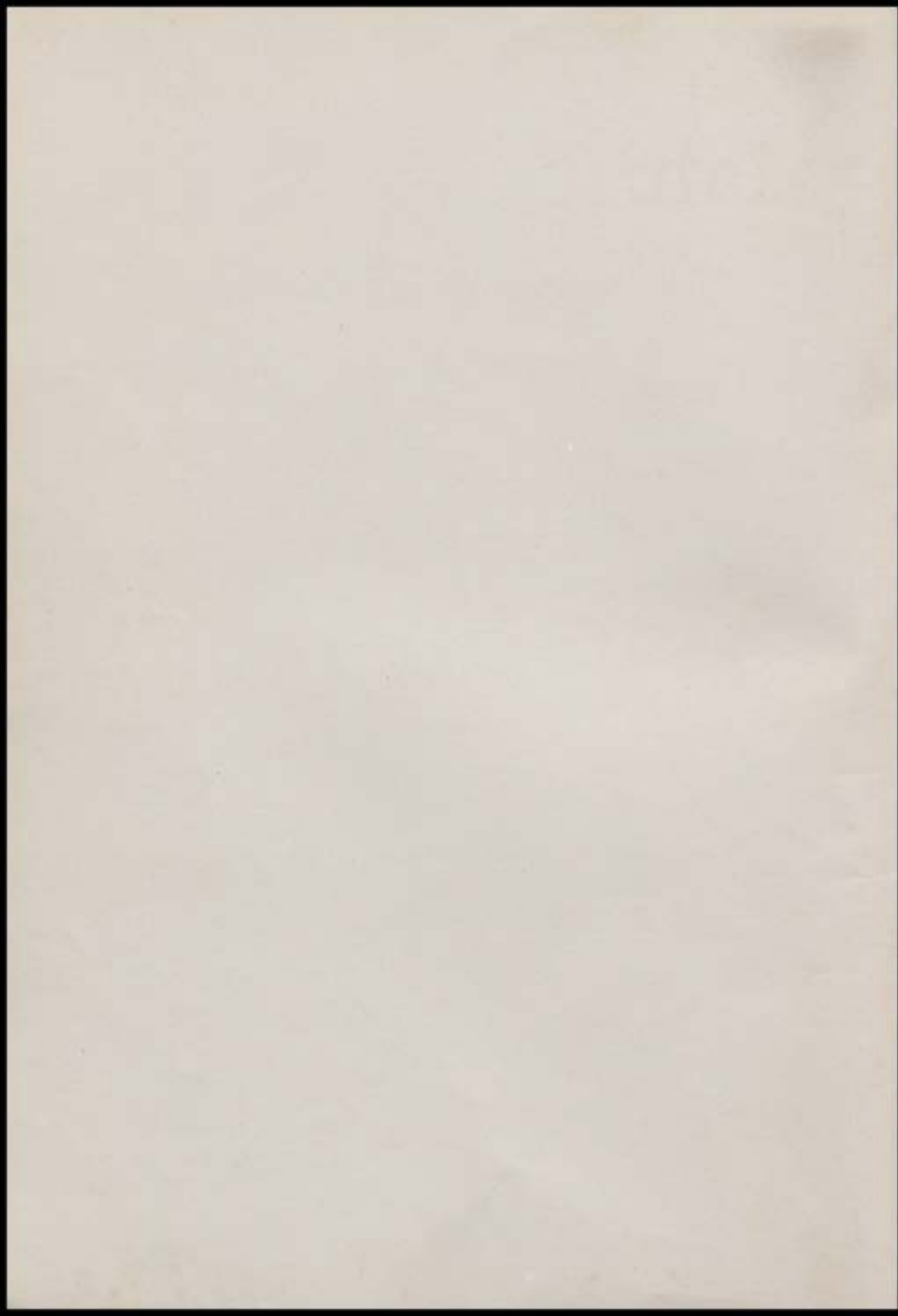


**M
A
H
I
S
C
O**

1946





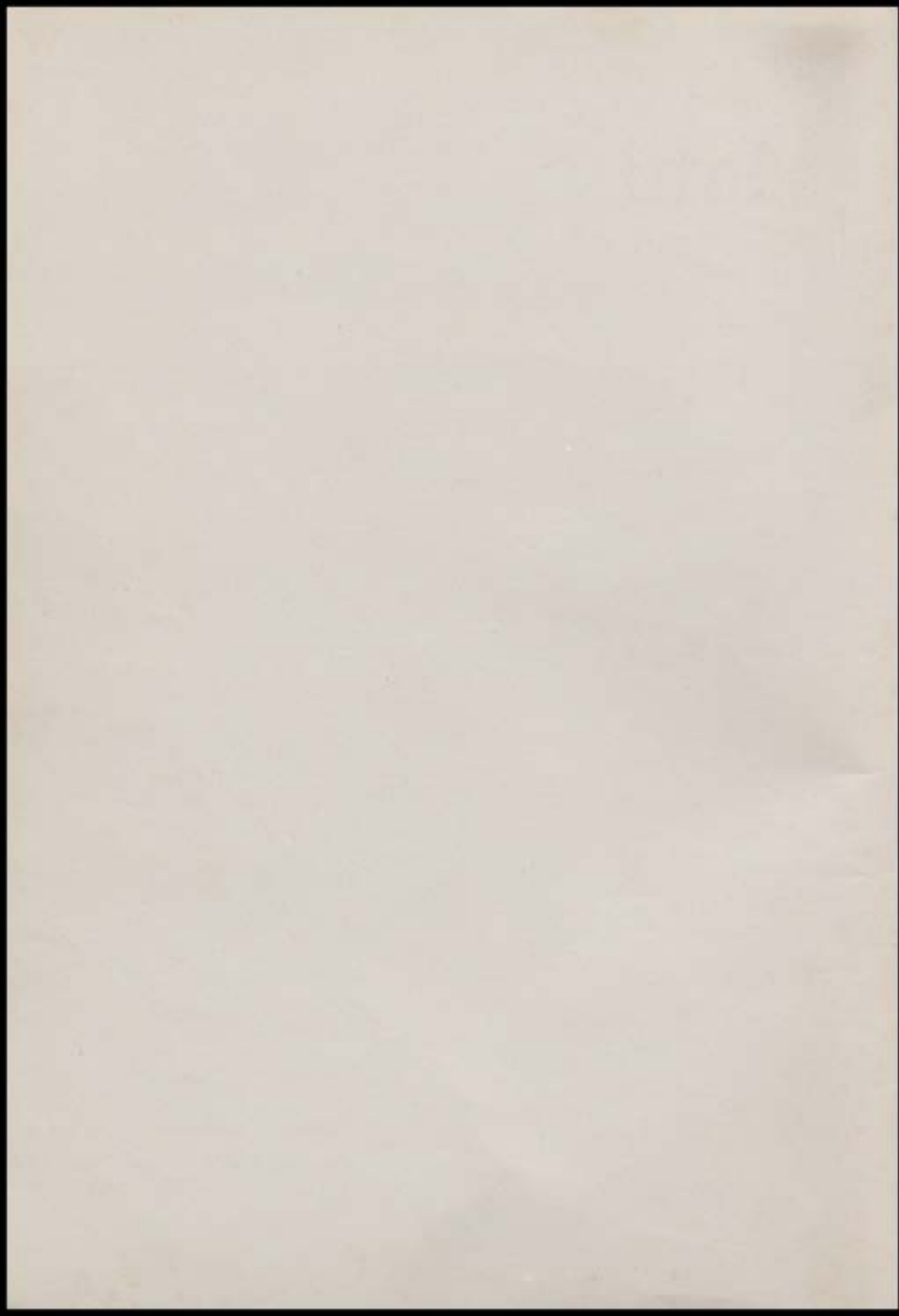


Mahisco

1946



Published by the Senior Class
Madison High School
Madison, Indiana



Mahisco

1946



Published by the Senior Class
Madison High School
Madison, Indiana

Foreward

We, the class of 1946, as the first post-war graduating class, do proudly and respectfully dedicate our Mahisco to those members of the many classes which have graduated before us; to those who have restored peace to the world, and to those who are now securing the peace.

Mr. Muncie

The Madison Public Schools have traveled the road of progress for the past twenty-six years under the guidance of an outstanding leader, Superintendent, Emery O. Muncie.

There has been a steady growth in the system of which the Madison public is proud. Modern, well equipped buildings, an excellent teaching corps, and full curriculum have been attained under his leadership.

The Madison Schools are comparable to the best in the state. Superintendent Muncie is an educator who seeks and accomplishes the best for his teachers, students, and patrons whom he serves.

The senior class of '46 feels honored to graduate from a school system that has at its helm—Emery O. Muncie.



EMERY O. MUNCIE
Superintendent
DePauw University, A. B.
Indiana University, A. M.
Hanover College



CONNOR K. SALM
Principal
Civics
Commercial Law
Psychology
Indiana University, A. B., A. M.

Mr. Salm

Madison High School has been most fortunate to have had as the principal for the preceding twenty years, Mr. Connor K. Salm.

Broadmindedness on his part has won him recognition among his associates and pupils. "Equality to all" is practiced with greatest regard to the welfare of the student who enters his office for counsel. Everyone who knows him readily admits that his sense of humor and fair play are his outstanding traits; which endears him in the hearts of the students.

We, the Senior Class of '46, consider ourselves privileged indeed to have had such a principal to guide us through these four years of our educational career.

Faculty

- VIRGINIA ERNST—Physical Education, Safety, Health, Typing, DePauw University, Normal College, American Gymnastic Union, Indiana State Teachers' College, A. B.; Butler University.
- CHARLES O. MANAUGH—History, Ph. Ed., Asst. Coach, Hanover College, A. B.
- ROBERT W. HODGERS—Industrial Arts, Indiana State Teachers' College, B. S., A. M.
- VINNIE GRAY—Art, Hanover College, John Herron Art School, Applied Art School, Chicago; Ball State Teachers' College.
- OPAL E. SHERMAN—Journalism, Mathematics, Public Speaking, Hanover College, A. B.; Butler University, Indiana University.
- JOHN A. DANGLADE—Science, Indiana University, A. B.; Chemistry, Columbia University, B. S.; Formerly Chief Chemist American Steel Foundry, Chicago.
- MRS. JENNIE REUL—Commercial, Indiana University, B. S.; Gregg College.
- DOROTHY OSGATHARP—Physical Education, Home Economics, Indiana University, A. B.
- NATHAN WILSON—Mathematics, Latin, Hanover, A. B.; Indiana State Teachers' College.
- GEORGE V. REUL—Mathematics, Social Science, Hanover College, A. B.; Indiana University.
- RAY EDDY—Athletic Coach, Purdue University, A. B.; Ph. Ed., Health, Safety.
- MABEL C. GREEN—English, Hanover College, A. B.; Wisconsin University, Indiana University, M. S.
- ARTHUR T. BUCKLES—Latin, Mathematics, Ball State Teachers' College, Indiana University, A. B.; Central Normal College.
- HAROLD ROTHERT—Music, Hanover College, Central Normal College, DePauw University, B.S.M.; Louisville Conservatory of Music, Arthur Jordan Conservatory of Music, Indiana University, M. M.
- HELEN C. LOTZ—English, Hanover College, A. B.; Butler University, Indiana University.

ROW I—Virginia Ernst, Charles O. Manaugh, Robert W. Hodggers, Vinnie Gray, Opal E. Sherman.

ROW II—John A. Danglade, Mrs. Jennie Reul, Dorothy Osgatharp, Nathan Wilson, George V. Reul.

ROW III—Ray Eddy, Mabel C. Green, Arthur T. Buckles, Harold Rotherbert, Helen Lotz.



Class Officers

TOM McLAUGHLIN
President



JAMES NICHOLS
Vice President



OPAL E. SHERMAN
Sponsor



BOB SMITH
Treasurer



ELAINE HORTON
Secretary



S

E

N

I

O

R

S



JOHN RICHERT—

"I seldom have a solemn moment."

Activities—Latin Club, 1, 2; Science, 4; Hi-Y, 4; Track, 2; Interclass Basketball, 3, 4; School Play, 3; Mahisco, 4.



DOROTHY INGLIS—

"Her thinking of others made others think of her."

Activities—Latin Club, 1, 2; G. A. A., 1, 2, 3; Choral Club, 1, 2, 3; Band, 1, 2, 3; S. S. S., 1, 2, 3, 4; Secretary, 2; Vice President, 3; Science Club, 4; School Play, 1; Business Manager, 1, 4; Mahisco, 4; Senior Play, 4.



ELIZABETH CURTIS—

"Always cheerful, always ready to talk."

Activities—Class Pres., 1; Class Queen, 2; Class Sec'y, 2; Band Majorette, 1, 2, 3, 4; Choral Club, 1, 2, 3; S. S. S., 1, 2, 3, 4; Madisonian, 3; Asst. Ed., 3; Science Club, 1.



DAVID O'NEAL—

"Genial is a word for him."

Activities—Softball, 3, 4; Interclass Softball, 1, 3; 2nd Team Basketball, 1, 2; Madisonian, 2; Mahisco, 4; Interclass Basketball, 1, 2, 3, 4; Band, 1.



THEODORE WINKEL—

"Studious, virtuous—an excellent combination."

Activities—Science Club, 1.



MARY EVELYN PORTER—

"If intelligence were gold, she would be a millionaire."

Activities—S. S. S., 1, 2, 3, 4; G. A. A., 3, 4; Choral Club, 1, 2; Latin Club, 2, 3; Science Club, 4; Mahisco, 4; School Play, 4.



BETTY LOU TEWELL—

"For she was just the quiet kind whose nature never varies."

Activities—S. S. S., 1, 2, 3, 4.



OSCAR BEAR—

"Thou hast wit and fun."

Activities—Track, 1, 2, 3, 4.



REBECCA KING—

"Strength in her right hand, and in her left hand wisdom and honor."

Activities—Student Council, 4; Secretary, 4; Mahisco, 4; S. S. S., 1, 2, 3, 4; Band, 1, 2, 3, 4; Choral Club, 1, 2, 3, 4; Accompanist, 3, 4; President, 4; Madisonian, 4; Latin Club, 1, 2; G. A. A., 1, 2; Play, 2, 4.

JOHN HECK—

"The first years of man must make provision for the last."

Activities—Madisonian, 3; Hi-Y, 3, 4; Latin Club, 2; Science Club, 3, 4.



WILLIAM GOEBEL—

"He is a soldier fit to stand by Caesar and give directions."

Activities—Mahisco, 4; Football, 1; Track, 2, 3; Hi-Y, 2, 3, 4; Choral Club, 1, 2, 3, 4; School Play, 1; Softball, 4; Interclass Basketball, 2, 3, 4; Latin Club, 1, 2.

DOTTIE HASSFURDER—

"A mighty spirit fills that tiny frame."

Activities—Yell, 3, 4; Band, 1, 2, 3, 4; Choral Club, 2, 3; S. S. S., 1, 2, 3, 4; Latin Club, 1, 2, 3; G. A. A., 1, 2; Science Club, 4; Mahisco, 4.



MARY VIRGINIA EVANS—

"A daughter of the Gods, divinely tall, and divinely fair."

Activities—S. S. S., 1, 2, 3, 4; G. A. A., 1, 2, 3, 4; Latin Club, 1, 2; Science Club, 4; Mahisco, 4; Chorus, 1; Canteen Council, 3.

RONALD CRODDY—

"The manly part is to do with might and main what you can do."

Activities—Latin Club, 1, 2; Band, 1, 2, 3, 4; Choral Club, 4; School Play, 4; Mahisco, 4; Hi-y, 4; Science Club, 4; Student Manager.



BOB SMITH—

"Sober, steadfast, quiet and true, this can be said of very few."

Activities—Central High School, 1, 2, 3; Science Club, 4; President, 4; Class Treasurer, 4.

AUDREY GILLAND—

"Impossible is a word I never use."

Activities—S. S. S., 1, 2, 3, 4; Madisonian, 3.





CAROLYN COFIELD—

"The rule of my life is to make business a pleasure and pleasure my business."

Activities—S. S. S., 1, 2, 3, 4; Latin Club, 1, 2, 3, 4; G. A. A., 1, 2; Choral Club, 1, 2, 3; School Play, 3; Madisonian, 3; Mahisco, 4; Senior Play, 4.

THOMAS McLAUGHLIN—

"None but himself could be his parallel."

Activities—Varsity Basketball, 2, 3, 4; 2nd Team Basketball, 2; Softball, 2, 3; Interclass Basketball, 2, 3; Interclass Softball, 2; Vice President, 2, 3; Class President, 4; Science Club, 1; Senior Play, 4.



JOSEPH HILL—

"Speak fitly or be silent."

Activities—Choral Club, 3, 4; Football, 1; Track, 1, 2, 3, 4; Science Club, 2; Interclass, 3.

VERA COTTRELL—

"Good nature is one of the richest fruits of the trees of Christianity."

Activities—Scipio High School, 1, 2; S. S. S., 3, 4; Mahisco, 4.



MARY LUE LEMING—

"Live while you live."

Activities—S. S. S., 1, 2, 3, 4; Science Club, 1; Choral Club, 1, 2; Senior Play, 4.

JIMMY NICHOLS—

"A youth, he seems, of cheerful yesterdays, and confident tomorrows."

Activities—Softball, 4; Interclass Basketball, 1, 2, 3, 4; Interclass Softball, 1, 3; Hi-Y, 2, 3, 4; Secretary Hi-Y, 4; Treasurer Hi-Y, 3; Student Council, 3, 4; President Student Council, 4; Latin Club, 1, 2; Mahisco, 4; Senior Play, 4.



CHARLES CAIN—

"Thinking is the hardest work there is."

Activities—Basketball, 2, 3, 4; Football, 3; Track, 2, 3; Softball, 3; Hi-Y, 2, 3, 4; Journalism, 4; Choral Club, 4; Interclass Basketball, 2, 3, 4.

MARY HELEN KLEIN—

"And chief in golden memory, stands a girl both tall and queenly."

Activities—S. S. S., 1, 2, 3, 4; G. A. A., 1, 2, 3; Student Council, 4; Yell Leader, 2; Choral Club, 1, 2.





CHARLES GIONET—

"Mingle a little folly with some wisdom."

Activities—Ripley High School, 1, 2; Vice President Science Club, 4; Interclass Softball, 3, 4; Interclass Basketball, 4; Softball, 4; Hi-Y, 4; Choral Club, 3; School Play, 4; Baseball, 4; Mahisco, 4.

MARGARET JOHNSON—

"Her very frowns are fairer far, than smiles of other maidens are."

Activities.—Latin Club, 1, 2; Asst. Editor Circum Oppidum, 2; S. S. S., 1, 2, 3, 4; G. A. A., 1, 2; Science Club Treasurer, 4; School Play, 3; Madisonian Staff, 3; Editor Madisonian, 4; Co-editor Mahisco, 4; Vice President Canteen Council, 3; Custer Contest, 4; Senior Play, 4.



ESTELLE KELLEY—

"But so fair, she takes the breath away, who gaze upon her unaware."

Activities—S. S. S., 1, 2, 3, 4; G. A. A., 1, 2, 4; Latin Club, 1, 2, 3; Science Club, 4; Mahisco, 4; Chorus, 1; Canteen Council, 3.

GEORGE F. KLEIN—

"Courteous, active, and true, a gentleman through and through."

Activities—Football, 2; Basketball, 2; Student Manager, 3, 4; Hi-Y, 2, 3, 4; Latin Club, 2; Science Club, 4; Track, 2; Interclass Basketball, 1, 2, 3, 4; Senior Play, 4.



BUDDY SCOTT—

"So good natured that no one can help liking him."

Activities—Hi-Y, 2, 3, 4; President Hi-Y, 4; Varsity Basketball, 1, 2, 3, 4; Student Council, 2, 3, 4; School Play (business manager), 4; Latin Club, 1, 2; Science Club, 4; Vice President Class, 2; Interclass Basketball, 1, 2; Interclass Softball, 1, 2, 3, 4; Football, 1; Track, 2, 3, 4; Baseball, 4; Softball, 2, 3, 4; Mahisco Staff, 4; Canteen Council, 3; Senior Play, 4.

VIRGINIA AHLMARK—

"Style is the dress of thought."

Activities—Latin Club, 1, 2; G. A. A., 1, 2; S.S.S., 1, 2, 3, 4; Choral Club, 1, 2, 3; Band, 1, 2, 3, 4; Madisonian, 3; Student Council, 4; School Play, 4; Co-editor Mahisco, 4; Band Council, 3; Senior Play, 4.



MARTHA LEE—

"She pleased while distant, when near she charmed."

Activities—S. S. S., 1, 2, 3, 4; G. A. A., 1, 2; Latin Club, 1, 2; Choral Club, 1, 2, 3; Student Council, 2, 3, 4; School Play, 3; Madisonian, 3; Mahisco, 4; Senior Play, 4.

CHARLES GROOMS—

"They just can't explain it, there is such a charm about him."

Activities—Hi-Y, 3, 4; Industrial Arts Club, 2, 3; Mahisco Staff, 4; Madisonian, 4; Interclass Basketball, 1, 2, 4; President Class, 1, 2; 2nd Team Basketball, 1, 2; Choral Club, 1.





ELAINE HORTON—

"A quiet being shows wise judgment."

Activities—Latin Club, 1, 2; S. S. S., 1, 2, 3, 4; Pres., 4; Choral Club, 1, 2, 3, 4; Class Secretary, 4; Class Treasurer, 3; Science Club, 4; G. A. A., 2, 3; Mahisco, 4; Melody Maids, 4; Prompter Senior Play, 4.



MARIANNA HODGERS—

"A kind, gentle heart she had to comfort friend and foe."

Activities—S. S. S., 1, 2, 3, 4; G. A. A., 1, 2, 3, 4; School Play, 4; Latin Club, 1, 2; Class Treasurer, 4.



PHIL COLE—

"Our youth we have today, we may always find time to grow old."

Activities—Basketball (2nd Team), 1, 2; Varsity Basketball, 2, 3, 4; Football, 2; Manager, 1; Softball, 2, 3, 4; Track, 3; Baseball, 4; Interclass, 1, 2, 3; Interclass Softball, 1, 2, 3; Choral Club, 1, 2, 3; Band, 1, 2, 3; Latin Club, 1, 2; Science Club, 4; Madisonian, 2, 3; Mahisco, 4.



BETTY CLARKSON—

"Soft peace she brings wherever she arrives."

Activities—G. A. A., 3; S. S. S., 1, 2, 3, 4.



JUDY RANAHAN—

"Her tongue is the law of kindness."

Activities—Moxee High School, Yakima, Washington, 1, 2, 3; S. S. S., 4; Mahisco, 4; Madisonian, 4; Costume Advisor School Play, 4; Senior Play, 4.



LEONARD LICHLYTER—

"The cultivation of the soil is the most important labor of man."



PAULINE FARRELL—

"Purity in mind and conduct is the glory of woman."

Activities—Vevay High School, 1, 2; S. S. S., 4; Mahisco, 4.



MARY FIEDER—

"Of manners gentle and affection mild."

Activities—S. S. S., 1, 2, 3, 4; Girls Glee Club, 4.



HARRY BORN—

"The only way to have a friend is to be one!"

Activities—Science Club, 1, 2; Interclass Basketball, 1, 2; Mahisco, 4.



DORIS MILLER—

"She may be small, but, oh, how clear; when one is in need she is always near."

Activities—S. S. S., 1, 2, 3, 4; Band, 1, 2, 3, 4; Choral Club, 1, 2, 3, 4; G. A. A., 1, 2; Madisonian, 3; Mahisco, 4; Senior Play, 4.



JUNE WILSON—

"Here's to the girl with a smile, that makes the bubble of life worth while."

Activities—Science Club, 1; G. A. A., 1; Choral Club, 1, 2, 3; Band, 1, 2, 3, 4; S. S. S., 1, 2, 3, 4; Mahisco, 4; Madisonian, 3; Senior Play, 4.



FRANK KLOPP—

"Rich are life's gifts to you, let life be thanked."

Activities—Track, 1; Science Club, 1, 4.



GLENFORD ROWLETT—

"A little nonsense now and then is relished by the wisest of men."

Activities—Hi-Y, 3, 4; 2nd Team, 2, 3; Science Club, 4; Latin Club, 1, 2; Interclass Softball, 2, 3, 4; Senior Play, 4.



MARTHA GREEN—

"If she will, she will; if she won't, she won't—so there."

Activities—Student Council, 1, 2; School Play, 2; S. S. S., 1, 2, 3, 4; G. A. A., 1, 2; Latin Club, 1, 2; Science Club, 4; Choral Club, 1, 2; Mahisco, 4; Senior Play, 4.



EDNA LUSBY—

"She doth little kindnesses, which most leave undone or despise."

Activities—S. S. S., 1, 2, 3, 4; Science Club, 1.



JOHN MOORE—

"Nothing succeeds like success."

Activities—Latin Club, 1, 2; Choral Club, 1, 2, 3, 4; Track, 1; Interclass Basketball, 2, 3, 4; Student Mgr., 3; Hi-Y, 3, 4; Student Council, 4; Custer Contest, 4; Mahisco, 4; School Play, 3, 4; Rotary Contest, 3; Senior Play, 4.



DORIS SMITH—

"Our deeds determine us as much as we determine our deeds."

Activities—S. S. S., 1, 2, 3, 4.



CHARLES COLE—

"Keen sense, common sense, but still some room for nonsense."

Activities—Track, 1, 2; Madisonian, 3; Band, 1, 2, 3.



HAROLD HASSFURDER—

"Anchors Aweigh."

Activities—Track, 1, 2, 3.



MARY LOUISE NAIL—

"The readiness of doing doth express, no other but the doer's willingness."

Activities—S. S. S., 1, 2, 3, 4; Band, 1, 2, 3, 4; Choral Club, 2, 4; Latin Club, 1, 2; Science Club, 4; Mahisco, 4; Band Council, 3, 4.



NORMA ALEXANDER—

"Her's is a spirit deep and crystal clear; calmly beneath her earnest face it lies."

Activities—Bedford and Milton High Schools, 1, 2; S. S. S., 3, 4; Mahisco, 4.



EDITH JENKINS—

"She is a wee, winsome thing."

Activities—Carrollton High School, 1, 2; S. S. S., 3, 4; Student Council, 3.



MARY S. STRICKLAND—

"She counts life by its sunshine and gladness."

Activities—S. S. S., 1, 2, 3, 4; Madisonian, 3.



ROSE ANN METZGER—

"Kind thoughts, kind words, kind deeds, are little things, but they are the things that makes one's life worth while."

Activities—S. S. S., 1, 2, 3, 4; Choral Club, 1, 2, 3, 4; Madisonian, 4.



ROSE MARIE WESBECKER—

"All her converse is sincere, Her conscience as the
noonday clear."

Activities—S. S. S., 1, 2, 3, 4; Band, 1, 2, 3, 4;
Student Council, 2; Choral Club, 2, 3; Madison-
ian, 3; Mahiseo, 4.



LENORA DITZLER—

"Happy am I, from care I'm free."

Activities—S. S. S., 1, 2, 3, 4; G. A. A., 1; Madi-
sonian, 3.



GLORIA SMITH—

"Quiet, yet deep, you would find her, if you would
only sound the depths."

Activities—S. S. S., 1, 2, 3, 4.

Class History

In the fall of '42 we, an unusual crop of green freshies, entered that intellectual institution known as Madison High School. For four fleeting eventful years, we have endeavored to prove to the faculty that we, too, deserve a place in the world.

AS FROSH.

We, in proving that we were not too green, elected Bunky Curtis, Charles Vaughn, and Stanley Vawter to fill our class offices. Our Student Council representatives were Martha Green and Morris Lockridge.

Our activities were varied. In addition to the regular band members, Pat Long and Bunky Curtis were drum majorettes. Buddy Scott and Charles Grooms played on the varsity team in several games. The boys of our class further proved our athletic ability by winning the softball tournament. In the school play, "*Andy Has the Answer*," Bill Goebel displayed our dramatic ability.

AS SOPHS.

We returned to M. H. S. a bit more confident. Having advanced from lowly position of freshmen to the height of sophomores, we began the year by electing Kenneth Guthrie, Tommy McLaughlin, and Elizabeth Curtis to guide us through the year. On the Student Council to represent us were Martha Green, Martha Lee, Johnny Campbell, Bob Miller, and Rose Marie Wesbecker.

For one night at least if a girl were dateless, it was her own fault. We gave every girl in M. H. S. her chance at our Leap Year Dance.

Both Kenneth Guthrie and Becky King had parts in the school play, "*The Home Front*."

As in our previous year, we won the Interclass Tournament. We were also Interclass Basketball "Champs."

AS JUNIORS.

We entered into one of our busiest years by electing very capable class officers.

President	John Campbell.
Vice President	Tommy McLaughlin.
Secretary	Jerry Lewis
Treasurer	Elaine Horton

For the Student Council we chose Martha Lee, Buddy Scott, Edith Jenkins, and Jimmy

Nichols. The student body elected a member of our class, Johnny Campbell, as President of the Student Council.

In the school play, "*Happy Landings*," the talent of our class was displayed by Margaret Johnson, Carolyn Cofield, John Moore, John Richert, and Martha Lee.

Aside from the three members on the varsity team our class again went into the limelight in sports. Again we won the interclass basketball tourney.

Our Prom was centered around the theme of a Mexican Fiesta.

AS SENIORS.

We, achieving at last the honor of being dignified, chose for our class officers:

President	Tommy McLaughlin
Vice President	James Nichols
Secretary	Elaine Horton
Treasurer	Bob Smith

Our Student Council representatives were: Mary Helen Klein, Martha Lee, Virginia Ahlmark, Becky King, John Scott, and John Moore. We again had the honor of having a member of our class as president of the Student Council, Jimmy Nichols, who held this office, was the first senior to be elected to it in several years.

The editorship of the *Madisonian* was taken over this year by Margaret Johnson.

During the year our class has been well represented in all the activities. Many of us were officers in the various school organizations. John Scott, president of the Hi-Y; Elaine Horton, president of S. S. S.; Becky King, president of the Choral Club, and Robert Smith, president of the Science Club. The other three officers of the Science Club were also seniors. Charles Gionet was vice president; Margaret Johnson, treasurer; and John Scott, secretary.

We busied ourselves further by choosing our caps and gowns, announcements, class colors, editing the *Mahisco*, presenting the Custer Contest, Senior Play, and Class Day, and other preparations for graduation.

As our high school career draws to a close, we look to the future, to the world of peace, and a happy and successful life for everyone of us.

THE MADISONIAN

To Print Your Name Will Be Our Aim

Vol. XXXX.

Madison High School, Madison, Indiana, May 11, 1956.

Number 12.

INDIANA UNIVERSITY, BLOOMINGTON, INDIANA, May 10, 1946—Miss Virginia Ahlmark is finally completing her medical schooling here. Miss Ahlmark, who has been struggling through Medical School since her graduation from Madison High School in 1946, is working on her last endeavor. Upon graduation she will accept a position as assistant to Doctor Kildare.

MADISON, INDIANA, May 11, 1956—Wedding bells chimed at the First National Bank this afternoon when Norma Alexander, Betty Clarkson, and Pauline Farrell became the brides of the president, vice president, and secretary, respectively, of the bank in which they were employed as stenographers. The three couples will reside in this city.

MADISON, INDIANA, May 11, 1956—One of the greatest honors which the city has ever enjoyed was conferred upon it today when the Crown Jewels of Great Britain arrived here by armored car. This display, which contains an enormous number of fabulous gems, will be on display at the Oscar C. Bear, Jr. Jewelry Store. Mr. Bear, who has been in business for ten years, received this jewelry in recognition of his honesty and integrity.

MADISON, INDIANA, May 11, 1956—Mrs. Andrew Taff, (the ex-Estelle Kelly) who recently opened a pet shop, will close May 16 in order to accompany her husband to California. They intend to open another pet shop there.

PARIS, FRANCE, May 5, 1956—I. P.—Maestro William Andrew Goebel, baritone, and his accompanist, Mrs. Goebel, the former Becky King, are making a very successful concert tour of the European continent. Tonight they will make a personal appearance in front of President Harry Born, recently elected to preside over the French Republic.

PARIS, FRANCE, May 5, 1956—I. P.—Charles Michael Cain, most prominent lawyer of Paris, has just won his most astounding case, in which he won a two year battle divorce for Mrs. Dorothy Hassfurther, Farulah, Vawter, Mouser. She has just re-married Admiral Stanley Vawter and they are spending their honeymoon in Milton, Kentucky.

NEW YORK, N. Y., May 9, 1956—A. P.—Miss Carolyn Coffield, who has now changed her name to "Mademoiselle Kay Row Lyn," has just purchased the Empire State Building. "Mademoiselle Kay Row Lyn" plans to utilize the building as home for her fast growing interior decoration business.

SHELBYVILLE, INDIANA, May 10, 1956—A. P.—Miss Martha Lee today accepted the presidency of the Merit Shoe Company. Miss Lee has been a faithful employe for fifteen years. Miss Lee also announced her forthcoming marriage to Mr. James Landry, class of '47. Congratulations were extended to both and all were happy to hear Miss Lee has finally consented.

CHICAGO, ILLINOIS, May 10, 1956—A. P.—At eight o'clock this evening Philip Cole, Jr. will give his outstanding, much talked of speech, "What's Wrong With the Youth of Today." Mr. Cole has won much acclaim for his enlightening viewpoint.

INDIANAPOLIS, INDIANA, May 10, 1956—A. P.—Miss Vera Cottrell, Lenora Ditzler, and Betty Towell have all taken positions in the State House as secretaries to Secretary of State, Jim Nichols; Representative, Ronald Croddy, and Senator, John Heck.

MADISON, INDIANA, May 10, 1956—Mary Virginia Evans has been given by her employer, William Wetzel, the job as head soda jerk, bookkeeper, chief cook and bottle washer of his drug store. She has been gainfully employed in this drug store for over ten years.

MADISON, INDIANA, May 11, 1956—The School Board of Madison High School selected the faculty for the coming semester today. There will be only one change. Miss Marianna Hodgers has signed a twenty year contract to serve as head of the Home Economics and Physical Education Departments.

NEW YORK, N. Y., May 9, 1956—A. P.—Miss Margaret Johnson, class of '46, has just accepted the presidency of the Associated Press Corporation. She will fulfill the duty in her spare time. Miss Johnson still edits the New York Times, is a member of Congress, and has a thriving law practice.

NEW YORK, N. Y., May 9, 1956—Miss Edith Jenkins, Audrey Gilland, and Rose Ann Metzger are now residing in New York City on Fifth Avenue. They are in business there, making cosmetics. Their shop is one of the most exclusive of its kind.

HOLLYWOOD, CALIFORNIA, May 9, 1956—Miss Julia Pomodoro, formerly Miss Martha Green, is appearing at the Radio City Music Hall starting tomorrow night in her most inspiring role, "My Corn Is Green."

WASHINGTON, D. C., May 9, 1956—A. P.—Joseph Hill was appointed to the office of Postmaster General early today. The President announced his decision early this morning. After the resignation of Harold Hassfurther last week it was wondered who the President would appoint.

HANOVER, INDIANA, May 10, 1956—The former Miss Ellizabeth Curtis, now Mrs. Donald Lowe, is manager, owner, and coach of her own basketball team, "The Ten Little Lowses." Mrs. Lowe is next planning a football team. They will come out for spring practice in 1966.

CHICAGO, ILLINOIS, May 10, 1956—A. P.—The former Mrs. Mary Helen Klein, Smith, Jessup, Corbin, Sauley, Robbins, Little Bear, is once more a pay divorcee and has just been given an exquisite party by Tommy Manville at the "Sherman Hotel." Mary Helen is a member of the illustrious class of '46.

THE MADISONIAN—1950—continued

MADISON, INDIANA, May 11, 1956.—Mrs. Paul Galla of Ryker's Ridge, the former Rose Marie Weabecker, entertained the Ryker's Ridge Home Economics Club with a Bingo Party last night. Prizes were awarded to June Chautauk, Doris Jessup, and Bob Smith.

NEW YORK, N. Y., May 9, 1956.—A. P.—The fourteenth Mrs. John Mansfield, Dottie Ingalls, has just won first prize in the International Portrait Contest. Her painting, a group picture of her nine children, showed great talent.

ST. LOUIS, MISSOURI, May 10, 1956.—A. P.—One of the most beautiful drug store openings ever witnessed in this city took place yesterday when George Frederick Klein opened "Pritz's Cashbar" on the corner of Main and Ninth Streets. Mr. Klein caters to the society trade.

**Visit
CETZIE CUREL BEATY
SALOON**
The rid of
Stragely Hair Rugged Nails
Hemshod Skin Strained Hair
Lue Leaning June Whison
Doris Miller
Fifth Street

**When In Reno Visit
CHARLIE'S CLASSIXO**
Dining Dancing
Proprietors: James
Charles Elomet
Charles Grooms
Three miles west of Reno, Nevada on E. N. 46.

NORTI MADISON, INDIANA, May 11, 1956.—A. P.—Frank Kiepp, The King of Northtown, has just opened his new shoe store. Mr. Kiepp intends to open shoe stores in Dayton, Dayton, Wirt, Hanover, and Brooksburg to enlarge his chain.

SILVER SPRINGS, FLORIDA, May 9, 1956.—A. P.—Mr. and Mrs. Richard Pennington have bought hair interest in the springs. They are planning to bottle their hair and put it on the market as "Pennington's Sparkling Hair Tonic"—it shines in the dark.

NEW YORK, N. Y., May 9, 1956.—A. P.—"Big Tom" McLaughlin appears tonight as one of the main attractions of Madison Square Gardens. There, before the All-State Game, he will be presented honors for "the father of the new way to coach." A crowd of thousands is expected. "Big Tom" is assisted by another member of the class of '46, Leonard Lechlytor. In his spare time Leonard buys real estate. Among his holdings are Rockefeller Center, Radio City, the New York Municipal Library, and the Brown Gymnasium.

**Grand Opening
THE CITIZEN'S GARAGE**
Proprietor: David O'Neal
Open May 12 Visitors Welcome
Refreshments
Corner of 2nd and Mulberry.

NEW JERSEY, May 9, 1956.—A. P.—Mr. Charles Cole has just opened another funeral home. Mr. Cole's chain now exceeds all other chains existing. Mr. and Mrs. Cole have funeral homes in every state.

VIENNA, AUSTRIA, May 8, 1956.—A. P.—Madame Mary Louise Nall, former student of Madison High School, class of '46, has recently been awarded the Nobel Prize for her great violin composition.

HANOVER, INDIANA, May 10, 1956.—Miss Mary Evelyn Portier, if was reported today, has been contracted to teach chemistry. Her contract is good for ten years and takes effect next September.

SEYMOUR, INDIANA, May 9, 1956.—A. P.—After long years of hard work and tedious strain, Mary Sue Strickland has transferred from telephone operator to the position of head supervisor of the Southeastern Indiana Telephone Company. Miss Strickland plans to install Theodore Winkel's new Atom-ic Rocket Telephone in all southeastern Indiana homes. Mr. Winkel recently retired to Crooked Island, of the Bahama group, to assist Dr. Evans Cottman in developing a butterless buttermilk.

**Receiving Car Wash
Complete Grooming
Shop at
Southeast Corner of Main
and Broadway
Flats Flaved Second Hand Forks
RICHERT - ROWLETT
GARAGE**

CHICAGO, ILLINOIS, May 9, 1956.—A. P.—The J. C. Penney Company has recently engaged as their head manager, Miss Elaine Horton. The J. C. Penney Company voted one hundred per cent for her induction.

INDIANAPOLIS, INDIANA, May 10, 1956.—A. P.—The State House has just recently employed two new janitors to manage the house and surroundings. These jobs have been presented to Robert Smith and John Moore in recognition of our own Secretary of State, Jim Nichols.

SEATTLE, WASHINGTON, May 9, 1956.—A. P.—Miss Judy Hannah appeared in court for the thirtieth time this week as a result of reckless driving. She has been warned once again by the courts that her carelessness, if continued, will not be tolerated.

SCOTTS INC.
Fine Foods
Good Trucks
Fast Transportation
Handsome Truck Drivers
ORDER NOW
John E. Scott, Jr.
Get Acquainted

SMITH'S ANTIQUE SHOP
Old China Old Glassware
Old Furniture Old Men
Call 360
Ask for Doris or Gloria





*U
N
D
E
R
C
L
A
S
S
E
S*



ROW I—Virginia Helton, Barbara Ketterman, Mary Cosby, Georganna Gray, Patsy McDonald, Marianna Johann, Ruth Irwin, Shirley Faught, Priscilla Eckert, Wanda Tanksley, Theresa Kasper, Virginia Olmstead.
 ROW II—Alene Zapp, Gladys O'Neal, Margaret Inglis, Bette Cole, Carolyn Schnaitter, Patricia Bersch, Mary Louise Bennett, Judy Wingham, Virginia Klopp.
 ROW III—Nadine Zapp, Norma Haas, Alma Skirvin, Bill Lohrig, Robert Cheatham, Charles Orrill, William Bilz, Joseph Winkel.
 ROW IV—William Kiser, John Hoffman, Oscar Tullis, Mr. Reul, Robert Gray, Cooper Buchanan, George Eaglin, Richard Vaughn, Robert Clegg.
 ROW V—James Landry, William Moorhead, Phil Kahn, Frank Armstrong, Miss Lotz, Coburn Jackson, Louis Garlinghouse.

Juniors

In nineteen hundred forty-three we entered Madison High School, a group of very "green" but enthusiastic freshmen. After adjusting ourselves to the ways of high school life, we elected John Hoffman, Robert Clegg, Theresa Kasper, and Charles Orrill as our class officers. Our able Student Council representatives were Phil Kahn and Patricia Bersch. We were honored when Marianna Johann and Bill Moorhead were chosen the first freshmen King and Queen of Madison High School for a number of years. One member of the class, Carolyn Schnaitter, was included in the cast of the school play, "The Home Front."

Our views were expressed on the Student Council in our sophomore year by Frank Armstrong, Marianna Johann, Charles Orrill, Carolyn Schnaitter, Bill Moorhead, and Phyllis Strong. The dramatic ability of two members of the class was revealed when Bob Clegg and Charles Orrill were given parts in the school play. Bill Moorhead, Frank Armstrong, and James Landry were awarded Interscholastic Scholarships for having better than average grades for three semesters and a major letter in sports.

To finance the annual Junior-Senior Prom, we engaged in a number of activities as juniors. Selling schedule pencils, Cub basketball pins, and taking magazine subscriptions netted over a three hundred dollar profit—a total unsurpassed by any other junior class. Again we were well represented on the Student Council. This year the representatives were Bob Clegg, Theresa Kasper, Judy Wingham, and Robert Cheatham. Major roles in the school play were given to Theresa Kasper and Ruth Irwin. Beside winning the Interclass Basketball Tourney, the junior class boasts five members of the first team—Bill Moorhead, Phil Kahn, Bob Clegg, James Landry, and Robert Cheatham.

Our class officers were:

President	Patsy McDonald
Vice President	Bob Gray
Secretary	Virginia Klopp
Treasurer	Paul Conklin

Sophomores

But now we're sophomores! Yes, last year we were those somewhat uncertain group of freshmen. To lead us through our first year we chose Mary Ann Vincent and Bob Knoebel. Our Student Council representatives were Mary Frances Hill and Bob Houze. In the school play, "Happy Landings," Bill Bear typified the dramatic abilities of our class.

Having left our greenish ways behind us, we, as sophomores elected the following people for class officers.

President	Mildred Johnson
Vice President	Bob Knoebel
Secretary	Jo Ann Short

To represent us on the Student Council we chose Bonnie Hugeback, Bill Bear, Norma Vestal, and George Wesbecker. To prove that we too are athletically inclined, Jack Server made the first team. Bob Beetem was chosen for a part in the school play, "The Mountain House Mystery."

ROW I—Janet Kestner, Joy Grimes, Mary Frances Hill, George Wesbecker, John Hoffman, Nancy Hassfunder, Leila O'Neal, Marjorie Wilson, June Ricketts, Rachel Jenkins, Fredalynn Daubenbi, Betty Winkel, Dorothy Adler, Ruby Sutter.

ROW II—Louis Burkhardt, Betsy Haas, Mildred Johnson, Lorillard Blackwell, Darlene Holland, Norma Harding, Rose Boyd, Donna Cottrell, Marguerite Schwab, Ellen Davis, Alice McConnell, Patricia Ditzler, William Bear, James Craig, Raymond Schnabel, Kenneth Lee.

ROW III—Mary Ann Vincent, Mary Jo Dattilo, Mary Ann Ackerman, Sally Breitenbach, Mary Kay White, Jo Ann Short, Georgetta Earls, Dorothy Hammond, Norma Vestal, Paul Goebel, Vincent Goebel, Emmett Kelly.

ROW IV—Wilma Eades, Bonnie Hugeback, Mary Helen Cruzier, Bernice Rusk, Caroline Lynch, Alma Skirvin, Vernadell Powell, Ann Rose Lueders, Harold Muncie, Thomas Nichols, Leonard Eades, Ralph Storm, Thomas Cheatham.

ROW V—Leroy Lakeman, Harry Hill, Charles Gautier, Norma Overstreet, Richard Newman, Jesse Monroe, Dorothy Murphy, Suzanne Peddie, Frances Stiver, Nancy McKay, Joann Haak, Jack Winters, Fred James, Ralph Sooy, Albert Mundt, Ralph Richey, John Kasper.

ROW VI—Jerry Craig, George Wolfschlag, Robert James, George Cofield, Robert Knoebel, Miss Green, Joann Melton, Richard Hill, Richard Niesse, Carl Lunsford, Donald Leek.

ROW VII—Jack Server, Raymond Green, Mr. Buckles, Mr. Danglade, Everett McDowell.





- ROW I—Emma Jean Bennett, Rita Stolte, Carolyn Scott, Ginger Bell, Dixie Driskell, Maxine Bever, Louise Montgomery, Olga Stoner, Betty Jo Ackerman, Betty Peters, Dorothy Rowlett, Frances Foxworthy, Mary Jane Sauley, Marilyn Demaree, Josephine Anderson, Ella Jean Spillman.
- ROW II—Richard Eaglin, Bill Wallace, Philip Stanton, Evelyn Herring, Norvella Wallace, Patricia Howley, Rose Marie Baglan, Norma Burkhardt, Jane Twineham, Mary Bea Lorenz, Donna Gayle Ashley, Dorothy Schmidt, Peggy Bunton.
- ROW III—Louis Burkhardt, Mr. Eddy, Bill Johann, Marjorie Hoagland, Jane Ann McClanahan, America Ashby, Shirley Stewart, Helen Parker, Catherine Jahries, Mary Jane Hawkins, Joanna Sherman, Susanne Davison, Donna Bersch, Clark Ketterman, Dickie Demaree.
- ROW IV—Louis Dalhover, Charles Robbins, Graham Taylor, Bobby Bilz, Margaret Anderson, Helen Smith, Alene Wright, Charles Wilson, Leonard Eaglin, James Ritchey, William Winkel, Charles Smith, Clyde James, Bernard Gordon, Norbert Schultz.
- ROW V—Glendale Warren, Wayne Grimes, Charles Gautier, Billy Joe Sullivan, Pat O'Connell, William Humphrey, Dick Henderson, John Cain, Robert Karst, Robert Hartman, Russell Willey, Joe Gray.
- ROW VI—Mr. Manaugh, William Smith, Jack Thorpe, John Botts, Bobby McDowell, Eddie Orrill, Jim Werbe, Bill Ross, Donald Adams, Jack Ice, James Jenkins, Junior D. Monroe, Bobby Lorenz, Walter Ricketts.

Freshmen—assembly

In the fall of the year of 1945, our class of ninety-two entered the portals of M. H. S. to take our place and win fame for our school.

The officers that we elected to lead us were:

President	Junior Monroe
Vice President	Edward Orrill
Secretary	Marilyn Demaree
Treasurer	Peggy Bunton

The Student Council members were Joanna Sherman and Ronald Wheeler. We were well represented in practically all of the school activities such as Latin Club, Sunshine Society, and G. A. A. That we were musically inclined was evident from the large number of our group who were in the band and chorus.

In our midst we find several very talented athletes. Those on the second team in basketball were: Junior Monroe, James Werbe, Edward Orrill, Robert Karst, John Cain, Norbert Schultz, Bill Johann, and Richard Eaglin. The special distinction of being Yell Leader in his freshman year went to Dick Demaree.

Marilyn Demaree represented us in the field of dramatics by her excellent interpretation of the mysterious maid in the school play, *"The Mountain House Mystery."* Joanna Sherman served as stage manager.

Freshmen—9B

Thirty-two new freshmen came into high school at the beginning of the second semester. They had Room 25 for their home room. Several of the members have shown interest in school activities, and much can be expected of them during the next few semesters. They had Mr. Wilson as their home room teacher, and the following set of officers were chosen:

President	Elston Branch
Vice President	Thomas Richey
Sec'y.-Treas.	Edna Bennett

ROW I—Alma Clarkson, Helen Lakeman, Norma Jean Robinson, Mary Jo Peddie, Harriet Haas, Margaret Robinson.

ROW II—Ronald Irwin, Bennie Goins, Edna Bennett, Margy Sterns, Betty Jenkins, Rosemary Jones, Elston Branch, Bobby Thorne.

ROW III—Bill Webster, Ted Server, Billy G. Miller, Charles VanWye, Thomas Ritchie, Gerald Fragier, Donald Morgan, Donald Hummel, Charles Browne.

ROW IV—Lee Buchanan, Spencer Schnaitter, Charles Kloss, Ruby Jones.

ROW V—Mr. Wilson, Roy Brooks, Norbert Burris, Tommy Ryker.





*O
R
G
A
N
I
Z
A
T
I
O
N
S*

Mahisco Staff

The senior class of 1946, due to the lowering of war time restrictions found it possible to publish our annual. The printing was done by the local company, The Democrat, and the engraving by Bush-Krebs of Louisville, Kentucky.

The Mahisco staff was:

Co-editors	Margaret Johnson Virginia Ahlmark	Alumni	Martha Green Judy Ranahan Jimmy Nichols David O'Neal
Business Managers	June Wilson Elaine Horton Rose M. Wesbecker Doris Miller Ronald Croddy	Will	Martha Lee
Senior Activities	Estelle Kelly Mary V. Evans	Prophecy	Mary Helen Klein Lue Leming
Class Editors	Rebecca King William Goebel	Circulation Mgrs.	Deborah Inglis Mary E. Porter Harry Born Tom McLaughlin
Organization Editors	Mary L. Naill Dorothy Hassfurther	Dramatics Editors	Elizabeth Curtis Marianna Hodgers
Faculty	John Moore John Richert Glen Rowlett	Publicity Mgrs.	John Scott Charles Gionet Charles Grooms
Athletics	Phil Cole Fritz Klein Charles Grooms	Typists	Vera Cottrell Lenorz Ditzler Norma Alexander Edna Lusby Pauline Farrell Edith Jenkins Audrey Gilland
Calendar	Carolyn Cofield		



Madisonian Staff

The Madisonian first made its appearance in the halls of M. H. S. in 1919. This first paper, a six by eight weekly edition has gradually enlarged until we have our large five column sixteen inch, four page bi-monthly paper of today.

The mailing list of the Madisonian, which has been steadily growing large due to the subscriptions of service men and other alumni, has this year reached an all time high. The Madisonian has a circulation of 500 copies bi-monthly.

The motto of the Madisonian, "To Print Your Name Will Be Our Aim," is very efficiently executed by the members of the journalism class.

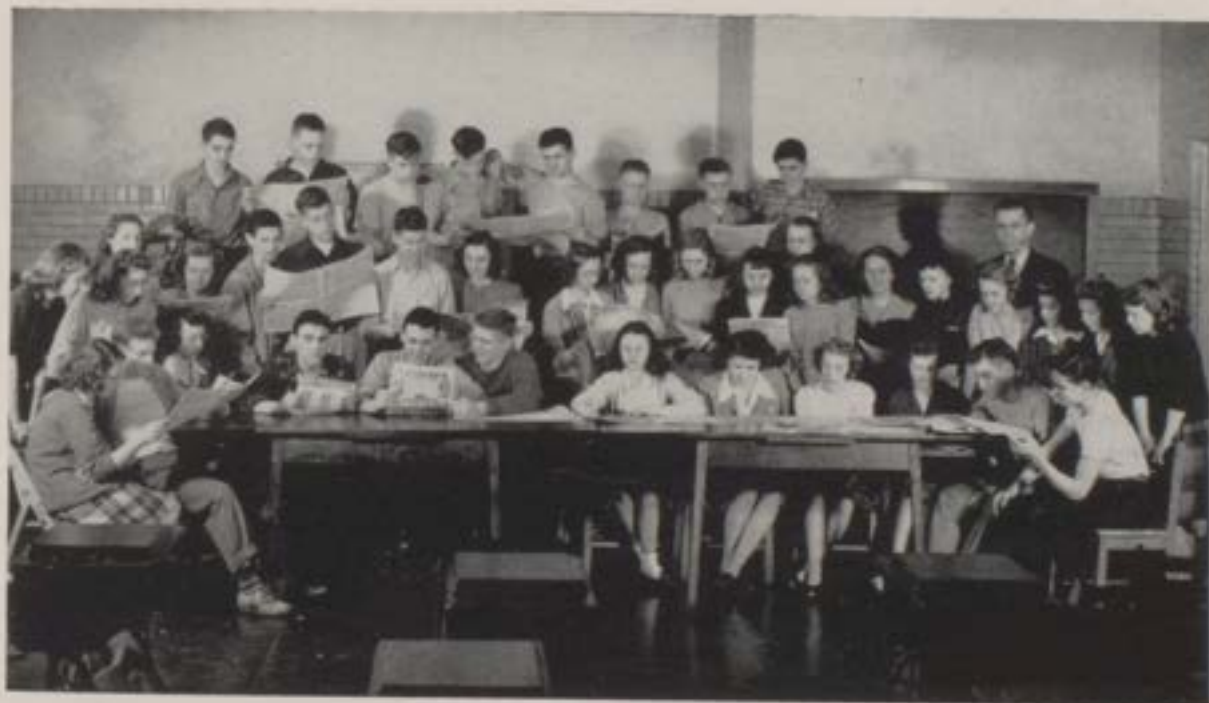
The staff for this year was:

Editor	Margaret Johnson	Business Managers	Phil Kahn
Sports Editors	Robert Clegg		Robert Clegg
	Frank Armstrong	Reporters	Members of
	Robert Cheatham		Journalism Class
Asst. Editor	Marianna Johann	Faculty Advisors	Opal E. Sherman
			George V. Reul

ROW I—Patsy McDonald, Robert Houze, Rebecca King, Robert Cheatham, Robert Clegg, Frank Armstrong, Margaret Johnson, Mary Helen Klein, Lue Leming, Mary Cosby, James Landry, Charles Orrill.

ROW II—Caroline Lynch, Joann Melton, Mary Sue Strickland, Judy Ranahan, Mary Ellen Kiser, Gladys O'Neal, Thomas Nichols, Harold Muncie, Jack Server, Georganna Gray, Joann Haak, Bernice Rusk, Nancy McKay, Barbara Ketterman, Suzanne Peddie, Miss Sherman, Norma Haas, Virginia Olmstead, Alene Zapp, Nadine Zapp, Georgetta Earls.

ROW III—Leonard Lichlyter, Coburn Jackson, David O'Neal, Louis Garlinghouse, Charles Cain, William Bilz, Joseph Winkel, Cooper Buchanan.





ROW I—Bonnie Hugeback, Joann Melton, Norma Vestal, Martha Lee, Joanna Sherman, Rebecca King, Virginia Ahlmark, Mary Helen Klein.

ROW II—James Werbe, Harold Muncie, Robert Cheatham, James Nichols, John Moore, Bill Bear, Robert Clegg, John Scott, George Wesbecker.

ROW III—Mr. Salm, Miss Sherman, Mr. Buckles.

Student Council

The purpose of the Student Council is to give the school body representation in an organization working to promote the welfare of the school from the standpoint of the students.

This year the council sold War Bonds during the Victory Loan. On each Monday War Stamps were sold in the home rooms. The council provided some interesting assembly programs.

The Student Council officers this year were:

President	Jimmy Nichols
Vice President	Theresa Kasper
Secretary	Rebecca King

Hi-Y Club

The Hi-Y Club stands for clean mind, clean speech, and thought. Only boys of high character may belong. Its purpose is to render service to the school and community.

The hall monitor system was used again this year.

An award of five dollars is given each year by the club to the senior boy ranking high in scholarship who has a good school spirit.

The Hi-Y Club this year has grown from seventeen to thirty members under the capable leadership of Mr. Manaugh.

The officers this year were:

President	John Scott
Vice President	Phil Kahn
Secretary	Jimmy Nichols
Treasurer	Jimmy Landry

ROW I—Emmett Kelly, Kenneth Lee, Richard Vaughn, Robert Clegg, George F. Klein, James Landry, Thomas Cheatham, John Kasper, George Wesbecker.

ROW II—Glen Rowlett, Robert Houze, Charles Orrill, William Bear, Robert Knoebel, Harold Muncie, Thomas Nichols.

ROW III—John Heck, John Scott, Robert Gray, Tom McLaughlin, Ronald Croddy, Robert Cheatham, Charles Gionet.

ROW IV—Mr. Manaugh, William Goebel, John Moore, James Nichols, Charles Chowning.

ROW V—John Hoffman, William Moorhead, Frank Armstrong, Charles Cain, William Kiser, Phil Kahn.





ROW I—Robert Smith, Richard Vaughn, Robert Clegg, Glen Rowlett, James Landry, Charles Chowning, George F. Klein, John Scott, Phil Cole, Bill Moorhead.

ROW II—Charles Orrill, Oscar Bear, Margaret Inglis, Margaret Johnson, Carolyn Schnaitter, Patricia Bersch, Georganna Gray, Elaine Horton, Charles Gionet, Patsy McDonald.

ROW III—Ronald Croddy, Barbara Ketterman, Mary Virginia Evans, Bettie White, Martha Green, Mary Evelyn Porter, Virginia Klopp, Mary Louise Nail, Dorothy Hassfurder, Mary Cosby.

ROW IV—Frank Klopp, Mr. Danglede, Estelle Kelly, Judy Ranahan.

ROW V—Frank Armstrong, Dorothy Inglis.

Science Club

Sponsored by Mr. Danglede, the Science Club was organized with a thought to keeping pace with current scientific developments and performing interesting experiments as a sideline.

The first meeting was called on October 19, 1945 and the following officers were elected:

President	Robert Smith
Vice President	Charles Gionet
Treasurer	Margaret Johnson
Secretary	John Scott, Jr.

Latin Club

The Latin Club was organized in 1926. This is the twentieth successful year of the club, which is open to all students taking Latin. It meets on the first and third Mondays of each month.

At the meetings of the Latin Club, all types of games involving Latin words, phrases and sentences are played.

Displaying also a social interest, the members sponsored a very enjoyable and profitable dance in the Brown Gym on January 11.

The present sponsor of the Latin Club is Mr. Wilson.

This year the officers were chosen as follows:

President	Mary Ann Vincent
Vice President	George Cofield
Secretary-Treasurer	Robert Knoebel

ROW I—Donna Bersch, Peggy Bunton, Joanna Sherman, Marilyn Demaree, Mary Bea Lorenz, Janet Kestner, Betty Jo Ackerman, Betsy Haas, Mildred Johnson, Betty Peters, Marjorie Wilson.

ROW II—Mary Ann Vincent, Mary Helen Crozier, Mary Jane Sauley, Frances Foxworthy, Jane Twineham, Mary Kay White, Mary Ann Ackerman, Bonnie Hugelback, Wilma Eades.

ROW III—Glenn Dale Warren, Richard Henderson, Charles Smith, Vincent Goebel, James Ritchy, William Winkel, Ralph Richey, Everett McDowell.

ROW IV—Paul Goebel, Clark Ketterman, George Cofield, George Wolf, Raymond Green, Mr. Wilson, William Bear.

ROW V—Richard Hill, Harry Hill, Raymond Schnabel, Robert James, Robert Knoebel, Richard Vaughn.



Juniors and Seniors



Freshmen and Sophomores



- ROW I—Barbara Ketterman, Doris Miller, June Wilson, Patsy McDonald, Margaret Inglis, Georganna Gray, Martha Lee, Wanda Tankaley, Priscilla Eckert, Shirley Faught, Elaine Horton, Virginia Olmstead, Rose Marie Wesbecker, Dorothy Hassfurther, Mary Cosby.
- ROW II—Mary Virginia Evans, Doris Smith, Betty Tewell, Bette Cole, Gladys O'Neal, Carolyn Schnaitter, Mary Lou Bennett, Patricia Bersch, Marianna Hodgers, Virginia Klopp, Mary Louise Naill.
- ROW III—Estelle Kelly, Nadine Zapp, Aline Zapp, Norma Haas, Virginia Skirvin, Martha Green, Lue Leming, Mary Helen Klein, Betty Clarkson, Mary Ellen Kiser.
- ROW IV—Edna Lusby, Mary Sue Strickland, Dorothy Inglis, Etta Belle Helton, Judy Ranahan, Rebecca King, Mary Evelyn Porter, Judy Wingham, Georgene Stephens, Bettie White, Carolyn Coheld, Virginia Ahlmark, Margaret Johnson.

Sunshine Society

A high school is hardly complete without a charitable organization. The M. H. S. Sunshine Society is one of such. This year the society has helped to provide for the needy at Christmas, and has contributed to various community projects.

The officers for 1945-46 were:

President	Elaine Horton
Vice President	Virginia Klopp
Treasurer	Marianna Hodgers
Corresponding Secretary	Norma Burkhardt
Recording Secretary	Mildred Johnson

- ROW I—Rita Stolte, Joy Grimes, Emma Jean Bennett, Carolyn Scott, Georgetta Earls, Dorothy Adler, Norma Harding, Norma Vestal, Gladys O'Neal, Nancy Hassfurther, Betty Ann Winkel, Carolyn Lynch, Fredalynne Daubenbis, Rachel Jenkins, Ella Jean Spillman, Ruby Sutter.
- ROW II—Lorilard Blackwell, Mary Kay White, Pat Ditzler, Louise Montgomery, Joann Melton, Dorothy Hammond, Betty Ann Ackerman, Josephine Anderson, June Ricketts, Donna Mae Cottrell, Rose Boyd, Norma Burkhardt, Helen Parker, Dorothy Smith, Dorothy Murphy.
- ROW III—Darlene Holland, Leila O'Neal, Janet Kestner, Marjorie Wilson, Norma Overstreet, Rose Bagland, Joann Short, Mary June Hawkins, Anna Rose Leuders, Betty Peters, Dixie Driskell, Maxine Bever, Ellen Davis, Shirley Stewart, Norma Owens, Katherine Jahries, Frances Stivers.
- ROW IV—Nadene Zapp, Mary Ann Vincent, Mary Ann Ackerman, Betsy Haas, Mary Jane Sauley, Mildred Johnson, Frances Foxworthy, Jessie Monroe, Bernice Rusk, Alma F. Skirvin, Mary Bea Lorenz, Jane Twineham, Dorothy Rowlett, Mary Helen Crozier, Marilyn Demaree, Sue Davison, Joanna Sherman, Peggy Buntou, Donna Bersch, Mary Jo Dattilo.
- ROW V—Rosemary Jones, He'len Lakeman, Alma Clarkson, Mary Jo Peddie, Margaret Robinson, Alice McConnell, Edna Bennett, Vernadell Powell, Marquerite Schwab, Betty Lou Jenkins, Wilma Eades, Donna Gayle Ashley, Nancy McKay, Bonnie Hugelback, Mary F. Hill, Joann Haak, Suzanne Peddie, Sallie Breitenback.
- ROW VI—Harriet Haas, Olga Stoner, Ginger Bell, Evelyn Herring, Miss Ernst, Novella Wallace, America Ashby, Jane Ann McClanahan, Marjorie Hoagland, Patricia Howley, Margaret Anderson, Helen Smith, Alene Wright.



- ROW I—Mary Jane Sauley, Frances Foxworthy, Betty Peters, Mary V. Evans, Donna Bersch, Estelle Kelly, Mary Lou Bennett, Wanda Tanksley, Margaret Inglis, Marianna Rodgers, Virginia Klopp, Nancy Hassfurder, Leila O'Neal, Gladys O'Neal.
- ROW II—Marilyn Demaree, Sue Davison, Mary Helen Crozier, Peggy Bunton, Joanna Sherman, Donna Gayle Ashley, Dorothy Rowlett, Jane Twincham, Mary Evelyn Porter, Nadine Zapp, Alene Zapp.
- ROW III—Janet Kestner, Norma Overstreet, Mary Bea Lorenz, Betty Jo Ackerman, Wilma Eades, Mrs. Osgatharp, Joy Grimes, Mary Ann Ackerman, Mary Kay White, Darlene Holland, Norma Vestal.
- ROW V—Marjerie Wilson, Betsy Haas, Mary Jo Dattilo, Jo Ann Short, Dorthy Hammond.

Girls' Athletic Association

The Girls' Athletic Association, sponsored by Mrs. Osgatharp, is one of the most active and entertaining organizations of M. H. S. The membership and interest of the girls show a high percentage. This has proved that organizations such as this are worth while, as well as important.

The girls are divided into four squads, or groups. They meet on Tuesday evenings from 6:00 until 7:30. A business meeting is held once a month in the school.

Basketball and volleyball are the two major sports; however, there are many other activities in which the girls take part. A very good example of this was a pitch-in supper which was held. It was successful due to the planning and co-operation offered.

The officers of the club are as follows:

President	Wanda Tanksley
Vice President	Wilma Eades
Secretary	Mary Ann Ackerman
News Reporter	Jo Ann Short

Senior Play

Before an unusually large audience at the Brown Gymnasium, the class of 1946 presented "Springtime for Suzie," a three-act comedy by Samuel French, Tuesday, April 30.

The cast consisted of:

June Wilson	Suzie Smith	Virginia Ahlmark	Constance Pawle
Martha Green	Laura Lorraine	John Moore	Bunny Slingsbee
Thomas McLaughlin	Sam Lorraine	George F. Klein	Jud Jones
Judy Ranahan	Armistice Johnson	Lue Leming	Jane Smith
Buddy Scott	Wayne Lorraine	Margaret Johnson	Rita Pandros
Martha Lee	Lola Clifford	Carolyn Cofield	Sadie Applebaum
Glen Rowlett	Cupie Clooney	Dottie Inglis	Mrs. Frankfort
		Doris Miller	Joyce Farrow

Those assisting in production were:

Stage Managers	Rose Marie Wesbecker	Prompter	Elaine Hoeton
	Charles Grooms	Costume Assistant	
	John Heck		Mary E. Porter
Business Managers		Ushers	Marianna Hodgers
	Ronald Croddy		Elizabeth Curtis
	Mary S. Strickland		Mary Helen Klein
	Harry Born	Music	Bill Goebel
	Rose Ann Metzger		Becky King
	Dorothy Hassfurther		Mary Louise Nail
	Charles Gionet	Director	Miss Sherman

ROW I—Doris Miller, Martha Lee, Glen Rowlett, Virginia Ahlmark, John Moore, Miss Sherman, Fritz Klein, Lue Leming, Dorothy Inglis, Margaret Johnson, Carolyn Cofield.

ROW II—Rose Ann Metzger, Ronald Croddy, Elaine Horton, Charles Gionet, Buddy Scott, June Wilson, Becky King, Bill Goebel, Mary Louise Nail, Martha Lee, Tom McLaughlin, Judy Ranahan, John Heck, Rose Marie Wesbecker, Mary Evelyn Porter, Mary Helen Klein, Marianna Hodgers.





ROW I—Miss Sherman, Theresa Kasper, Bob Beetem, Virginia Ahlmark, Charles Gionet, Ruth Irwin, Mary Helen Klein.
 ROW II—John Moore, Dorothy Inglis, Judy Ranahan, Buddy Scott, Ronald Croddy, Marianna Hodggers, Mary Evelyn Porter, Marilyn Demaree, Joanna Sherman, Becky King, Bill Goebel, Martha Lee.

School Play

The "Mountain House Mystery," one of the most thrilling mysteries, was presented at the Brown Gymnasium on December 11, 1945.

The play was centered around the Williams family and relatives. Excitement was produced by an escaping criminal, a false uncle, and a mysterious girl. The play was directed by Miss Sherman.

The managers were:

Joanna Sherman	Prompter	Judy Ranahan	Costume
Rebecca King	Sound Effects	Bob Clegg	Publicity
Bill Goebel	Lighting	Buddy Scott	Publicity
Martha Lee	General Chairman	Dorothy Inglis	Publicity Manager

The cast included:

Charles Gionet	Maxwell Williams	Mary E. Porter	Hilda Jones
Ruth Irwin	Sandra Williams	Marianna Hodggers	Mysterious Girl
Mary H. Klein	Elizabeth Williams	Virginia Ahlmark	Mrs. Williams
Marilyn Demaree	Mary Sawyer	Bob Knoebel	Thomas King
Theresa Kasper	Peggy Sears	Ronald Croddy	Andrew Scott
Bob Beetem	Harold Trueblood	John Moore	Jonathan Fox

Girls' Glee Club

A democratic aspect of Madison High School's music department, the Girls' Glee Club, was organized this year to provide vocal instruction for students who did not wish to take the selective examination given in other branches. Any student who elected to enroll was given an opportunity to participate. A high standard of work was, nevertheless, achieved.

Activities of the unit included a program for the Parent-Teacher Association in November, Christmas appearances for the Presbyterian Guild and Cragmont church service, a performance before the Madison Woman's Club in April and a prominent part in the Spring Concert in May.

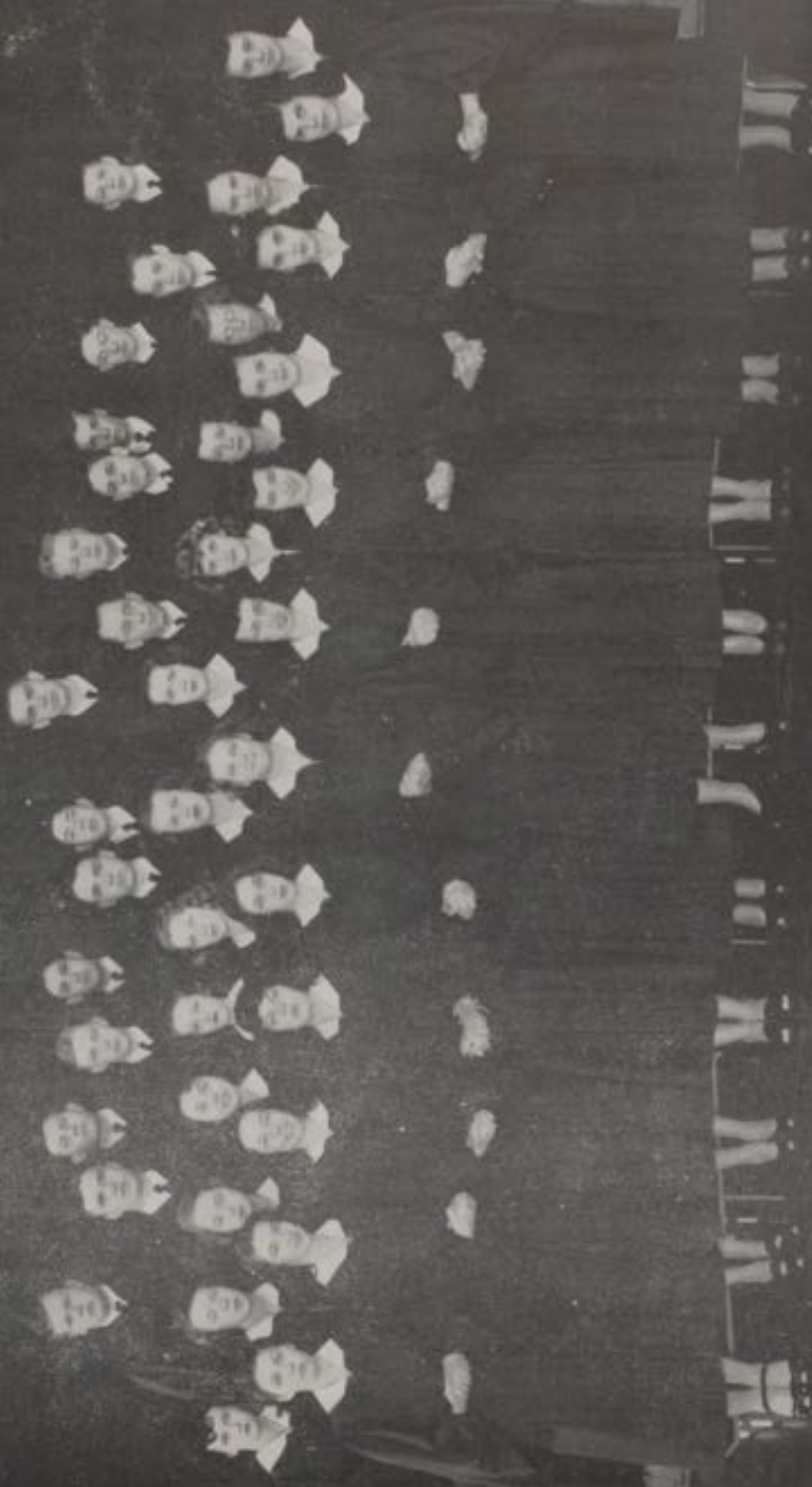
ROW I—Donna Gayle Ashley, Mary Jane Sauley, Marilyn Demaree.

ROW II—Theresa Kasper, Francis Foxworthy, Mary Bea Lorenz, Anna Rose Lueders, Gloria Smith.

ROW III—Joanna Sherman, Betty Jo Ackerman, Rose Ann Metzger, Sue Davison, Peggy Bunton, Judy Wingham, Betsy Haas.

ROW IV—Mr. Rothert.





ROW I—Doris Driskell, Fred Daubenbiss, Margaret Inglis, Bette Cole, Joan Melton, Mary Louise Nail, Rebecca King, Elaine Horton, Donna Bersch, Norma Overstreet, Patricia Bersch.

ROW II—Ginger Bell, Georgetta Earls, Jo Ann Short, Barbara Ketterman, Norma Harding, Mary Helen Crozier, Carolyn Schnaitter, Mary Ann Vincent, Betty Peters, Mary Cobby, Mary Ann Acherman, Rachel Jenkins, Marjorie Wilson.

ROW III—William Goebel, Glenford Rowlett, William Bear, Mr. Rothert, Harry Hill, George Cofield.

ROW IV—Jack Wallace, Robert Knoebel, Charles Orrill, Donald Hummel, Raymond Green, George Wolfschlag, John Hoffman, Tommy Ryker, Bill Johann.

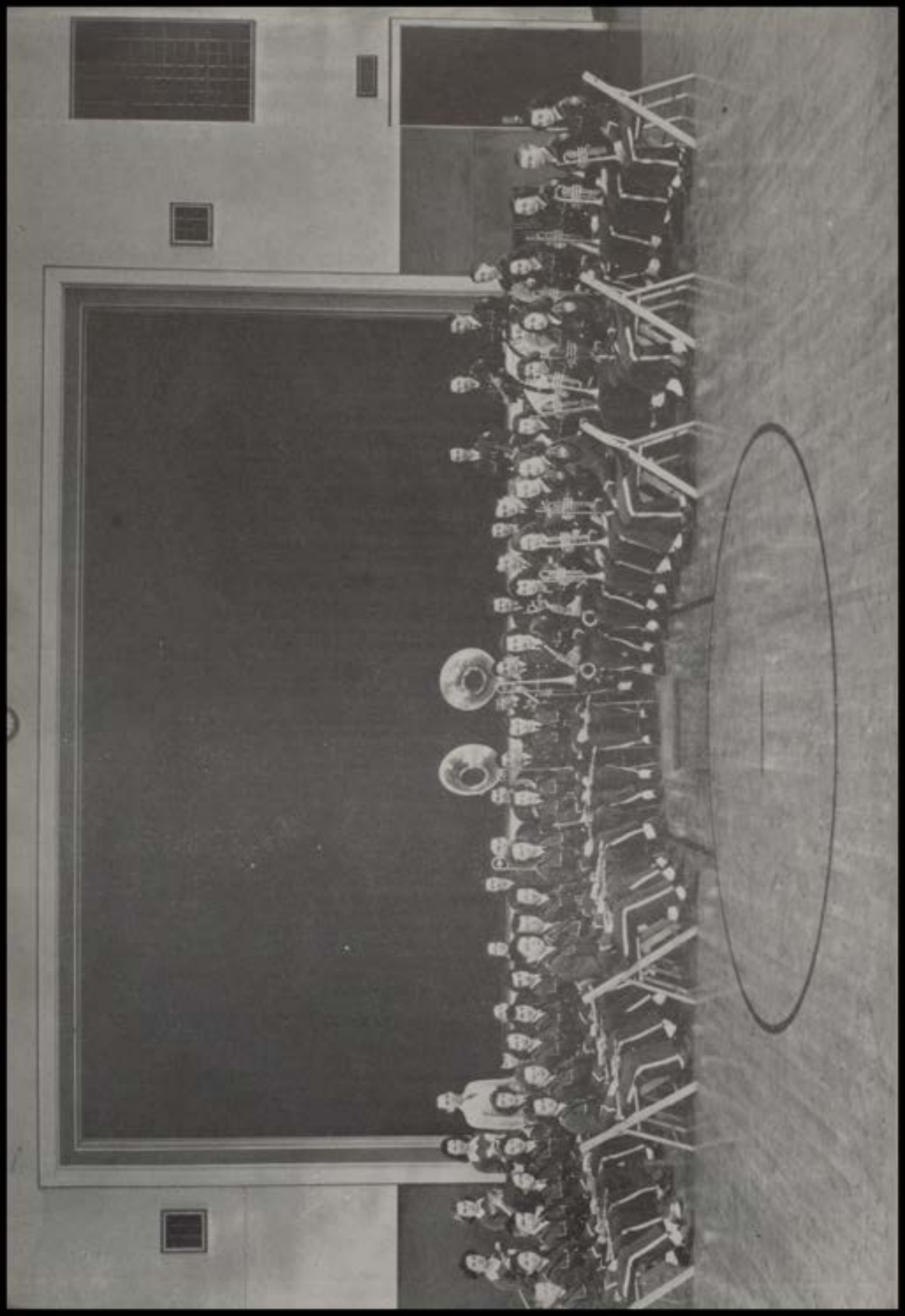
Choral Club

A complete re-organization of the Choral Club at the beginning of the school year placed a new premium upon membership. Only those who passed a proficiency test and had a record of good school citizenship were admitted. A constitution was adopted and officers were elected. The Choral Club thus became primarily a student-governed organization.

Opening its concert season, the choristers appeared early in December at the Elks' memorial service. Shortly afterward they embarked upon a number of pre-holiday appearances which included the Kiwanis and Rotary clubs, Hanover High School and Hanover College. Yuletide activities were climaxed by a broadcast from radio station WFHAS at Louisville, heard at such distant points as Baltimore, Maryland; Palm Beach, Florida; Mobile, Alabama; and Minneapolis, Minnesota.

The Choral Club participated in the Valley Choral Festival, held at New Albany High School on April 26, resumed after a suspension during the war years. The vocalists sang for the Madison Women's Club in March and took an important part in the Spring Concert in May. The annual Baccalaureate and Commencement exercises provided a fitting conclusion to the Choral Club's first post-war season.

Officers for the year were Becky King, president; Carolyn Schnaitter, vice president; and Charles Orrill, secretary-treasurer.



ROW I—Bill Bear, Rebecca King, Mary Jane Sauley, Joanna Sherman, Doris Miller, Mildred Johnson, Bonnie Hugelback, Mary Jane Hawkins, Marilyn Demares, Peggy Buntton, Mary Louise Nail.

ROW II—Marjorie Wilson, Betsy Haas, Virginia Ahlmark, June Wilson, Rose Marie Wesbecker, Ronald Croddy, Vincent Goebel, Charles Orrill, Raymond Schnabel, Ralph Storm, Nadene Zapp, Alene Zapp, Ralph Richey, Janet Kestner.

ROW III—John Hoffman, Dixie Driskell, Philip Stanton, Rose Baglan, Barbara Ketterman, Jane Twineham, Donna Gayle Ashley, Clark Ketterman, Mary Ann Vincent, Dorothy Hassfurther, Leonard Eades, Jimmy Craig, Gladys O'Neal, Etta Belle Helton, Mary Kay White, Betty Jo Ackerman, Richard Henderson, Maxine Bever.

Standing—Elizabeth Curtis, Emma Jean Bennett, Rita Stolte, Mr. Rothert, Georganna Gray, Patsy McDonald, Lyman Tullis, Louis Dalhover.

Band

In its eighteenth year of continuous existence, the band achieved a new pinnacle of accomplishment, the result of new standards by which members were admitted only through examination.

An important contribution to school life was made by the band at all home basketball games, when the unit provided varied programs of marches, service songs and popular airs during intermission periods. The instrumentalists made their first out-of-town trip since the beginning of the war when they played at the Madison-Greensburg game in the latter city on February 8. Their schedule was further complemented by taking a major part in the Spring Concert. An appearance at the Commencement service concluded an active season.

The social element in the band's activities found an outlet in the Band Ball, held in early May. Restricted to members of the band and their personal guests, the dance was a high-light of the school's social calendar.

The organization's officers for the year were Bill Bear, president; Ronald Croddy, vice president; and Mary Ann Vincent, secretary-treasurer. Elizabeth Curtis, Rita Stolte, and Emma Jean Bennett, as majorettes, added an impressive touch to performances.



Jo Ann Short, Norma Harding, Elaine Horton, Norma Overstreet, Judy Wingham, Theresa Kasper.

Melody Maids

The Melody Maids this year were formed by Theresa Kasper, Judy Wingham, Norma Harding, Elaine Horton, Norma Overstreet, and Jo Ann Short. They participated in various programs during the year such as the Basketball Banquet, the Kappa Kappa Kappa, Inc., the Kiwanis Club, the Custer Contest, and the Spring Concert. Their sponsor was Mr. Harold Rothert.

Custer Contest

The thirty-fifth annual Custer Oratorical Contest was held on May 10 at the Brown Gymnasium. All five contestants, the highest members of the graduating class who had attended Madison High School for four years, gave dramatic selections of their own choosing.

James Nichols, who was also eligible, declined and his place went to the next in line. Mary Evelyn Porter, Robert Smith, and Judy Ranahan ranked high but were ineligible since they had not spent four years at M. H. S.

The awards went to:

1st prize—John Moore—"The Inmate of the Dungeon."

2nd prize—Becky King—"Into a Better Kingdom."

Equal rank—Margaret Johnson—"Mary, Queen of Scots"; Martha Lee—"A Little Child"; Marianna Hodgers—"The Bells of Mediva."

Margaret Johnson, Marianna Hodgers, John Moore, Becky King, Martha Lee.





*A
T
H
L
E
T
I
C
S*

In Memoriam

This year, the first season of peacetime basketball since the outbreak of hostilities in 1941, has seen many of the old familiar faces of the letter-men and other of our Alumni returning to their homes from far-flung battle-fronts, once again to see their favorite sport being played as only boys from Indiana can play it. But there are some of the boys who, in years past, not only played for their Alma Mater but also sat in the stands and cheered the Cubs to victory, who will never again see the sport popularly known as, "HOOSIER HARDWOOD MADNESS," for they were lost in the struggle to maintain the rights of "LIFE, LIBERTY, AND THE PURSUIT OF HAPPINESS."

To these boys, IRWIN ANDERSON, GEORGE BLACK, FRANK "DUFFY" WALTERS, RALPH KNOEBEL, JR., ROBERT FINCH, JOHN M. NEAL, and JOHN CUNDY, we humbly dedicate the athletic portion of our 1946 Annual.

The Sports Editors.

Coach Eddy

For the past seven years, Madison High School's athletic ventures have been directed by two very capable men, Mr. Ray Eddy and C. O. Manaugh.

Coach Eddy has piled up a won - lost record with his basketball teams which has never been equaled by any of his predecessors, and Coach Manaugh has done likewise with his second teams; this year's squad of reserves was the greatest ever, winning 16 and losing but 2.

In his seven years at M. H. S., Coach Eddy has compiled this remarkable record: six sectional championships; three regional crowns (in succession); one semi-final championship; runner-up in the State Finals in 1941; two Southeastern Conference basketball championships; two S. E. I. C. softball crowns; one S. E. I. C. football championship; and three invitational tourney (New Years Day) crowns. In all these glorious victories, Coach Eddy has been superbly assisted by the "big, little" assistant coach of our school.



RAY EDDY.



C. O. MANAUGH.

Coach Manaugh

The inimitable "C. O.," Coach Manaugh has worked all the boys on these teams who have gained athletic fame since his arrival in 1943, on various fundamentals of football, basketball, etc. He is responsible for the development of the second team boys into varsity material. In a large way, he has developed boys to the point where Coach Eddy can make young men who achieve athletic fame.

But these two men not only coach sports. They also develop in all their players better character, and help them to want to be better school citizens.

Great men? We, of M. H. S., certainly think so! This epitaph only in part glorifies them, because, as it has been said:

"All things cannot be coined into simple words,
One can write easily of flowers and birds;
Or still can speak of warm spring days;
But *Character*, try to put *that* into a single phrase.

Cub Varsity



BILL MOORHEAD.



BOB CHEATHAM.



BOB CLEGG.



PHIL COLE.



TOM McLAUGHLIN.

Cub Varsity



JIM LANDRY.



JACK SERVER.



BUD SCOTT.



PHIL KAHN.



HAROLD MUNCIE.

Cub Roster

	PLAYER	POS.	WT.	HT.	YRS. EXP.	CLASS
1.	JOHN SCOTT, JR.	F-C	175	6'0"	4	SENIOR
2.	THOMAS McLAUGHLIN	C	178	6'4"	3	SENIOR
3.	PHILIP COLE, JR.	G	172	5'7"	3	SENIOR
4.	WILLIAM MOORHEAD	G-F	190	6'1"	3	JUNIOR
5.	JAMES LANDRY	G	165	5'8"	3	JUNIOR
6.	PHILIP KAHN, JR.	G	150	5'9"	1	JUNIOR
7.	ROBERT CLEGG	F	165	6'0"	1	JUNIOR
8.	HAROLD MUNCIE	F	147	6'1"	1	SOPHOMORE
9.	JACK SERVER	G	130	5'10"	1	SOPHOMORE
10.	ROBERT CHEATHAM	F-G	142	5'11"	1	JUNIOR

Total Points

NAME	FG	FT	PF	TP
JOHN SCOTT	99	62	68	260
TOM McLAUGHLIN	101	32	44	234
BILL MOORHEAD	71	21	31	163
PHIL KAHN	42	33	58	117
BOB CLEGG	33	23	21	89
HAROLD MUNCIE	20	25	19	65
JACK SERVER	19	5	20	43
PHIL COLE	14	11	28	39
JIM LANDRY	9	12	31	30
BOB CHEATHAM	7	3	9	17
Totals	415	227	330	1057
Regional				39
Grand Total Points				1096

Season's Record

M. H. S.	OPPONENT	M. H. S.	OPPONENT
43	Vevay	20	Batesville
44	North Vernon	23	Greensburg
33	Columbus	36	Lawrenceburg
29	Scottsburg	19	BLIND TOURNEY
29	Lawrenceburg	25	Seymour—January 1.
38	Salem	41	Seymour
29	Scottsburg	30	New Albany
58	Aurora	31	Final
48	Aurora	22	SECTIONAL
52	Salem	35	Hanover
31	Jeffersonville	40	North Madison
56	North Vernon	33	Deputy
57	Brownstown	29	Scottsburg
36	Franklin	27	Final
48	Huntingburg	51	39
			REGIONAL
			Columbus
			53

Statistics

This year's band of high scoring Cubs, in piling up 1096 points, broke just about every record ever attained in Madison High School in the statistics department. They not only out-shot their opponents 415 to 254 field goals for a margin of 161 fielders, but they also dropped in 227 points from the charity stripe, while their adversaries were able to garner but 155 gratis tosses, for a margin of 72 free pitches. From the personal foul standpoint, the charges of Cub mentor, Ray Eddy, totaled 41 less miscues than did their opponents, the count being 330 for the Red and White, to 371 for all their foes.

The Bruins' defensive ability was well proven this year, as they held their opponents to an aggregate sum of 716 points, for an average of 28 points per contest, while ringing up a total of 44 per game for themselves.

Huntingburg's Happy Hunters, always a high scoring outfit, were the only team to score more than 15 field goals against Eddy's crew this year. The Hunters scorched the cords with 23 fielders, but this mark was the exception rather than the rule, as the Cubs held most of their foes to between 9 and 12 field goals per game.

Playing 13 conference games, the Cubs were victorious in 11 of them; they lost to Salem and Scottsburg by meager margins of 41-38 and 30-29, respectively. Although dropping these two contests the Cubs later gained revenge from Salem, as they defeated the Lions 52-35 on the Madison floor, and avenged the Scottsburg loss, dropping "Whiskey" Feeler's Warriors 36-35 in the finals of the sectional tourney. During the regular season, Coach Eddy's boys handed the Warriors their only set-back, when they defeated them 29-19 at Scottsburg.

The Eddy-men scored an aggregate total of 576 points in the conference this year, and held their opponents to 370 markers for an offensive average of 44 points and a defensive mark of 28. These scores helped the Cubs rank first in conference offensive averages, and second, defensively; their margin of victory in first place slot this year.

Sectional

Madison drew Hanover's County Champion Bulldogs in the first game of the sectional held at the Brown Gym, and were pressed for three quarters before defeating the Dogs, 42-28.

After North Madison had eliminated Central 28-23, Scottsburg's Warriors eliminated Saluda 39-15, Dupont was put out by Austin 38-30, and Deputy crushed Paris Crossing 38-15, setting the stage for Madison's resounding whacking of North Madison 65-22. Madison had an easy time, leading at every quarter, 19-2, 35-12, and 48-18.

Scottsburg began the semi-finals by defeating Austin by a whisker, 28-24, then Madison came on to crush Deputy 63-7; quarter scores were 15-5, 32-5, and 45-7, all Madison's. This victory pitted arch rivals, Scottsburg and Madison in the finals.

The Cubs were off to the races early, but Feeler's Warriors almost closed the gap late in the game. Madison led at the first stop 17-9, and held a 25-17 halftime advantage, only to see Scottsburg come within striking distance the third quarter 33-28. With two minutes left in the game, Scottsburg forged in front 34-33, then Jack Server cracked a long, high arched shot from the middle of the floor to put the Cubs ahead 35-34 with a minute left. Amick, Scottsburg's guard, was fouled, and he proceeded to drop in one of two free throws to tie the proceedings 35-35 with 40 seconds remaining and all indications pointed to an overtime, when Bob Clegg was fouled by Lloyd Everitt of Scottsburg, and counted a free throw to send Madison ahead 36-35. Madison got the ball and Scottsburg fouled, then elected to take the ball out of bounds, and the Cubs stalled the rest of the game to win 36-35 and become 1946 sectional champions.

Regional

The Cubs dropped the first game of the regional to the "dead eyed" Columbus Bulldogs by a score of 53-39. Franklin defeated Sandcreek 50-24 and went on to subdue Columbus 29-21 in the finals.



ROW I—Mr. Manaugh, Coach; Norbert Schultz, Kenneth Lee, Raymond Green, Thomas Cheatham, John Cain, Bill Johann.
 ROW II—Richard Eaglin, Junior Monroe, Oscar Tullis, James Werbe, Bill Karst, Edward Orrill.
 ROW III—Cooper Buchanan, Student Mgr.; John Kasper, George Cofield, Student Mgr.

Second Team

This year's second team, holding the best won and lost record of any M. H. S. reserve team for many years, divided its season, unlike Rome, into only two parts, the lopsided half, in which they won all their games by comfortable margins, and the "win in by a whisker" half, or that portion of the season in which they won practically all their games by a scant one or two points.

Coach C. O. Manaugh's Little Cubs, after opening their season with victories over North Vernon and Vevay, lost a 25-22 decision to Columbus, then went on a rampage, hanging up a 13 game win streak before being downed by Lawrenceburg 36-27 in the last game of the year.

The "big wheels" for the Cubs this year were Junior Monroe, who scored 144 points to lead the reserves; Oscar Tullis, who threw in 90; Buck Cheatham, racking up 80; Kenny Lee, who made 78; and John Kasper and Jim Werbe who scored 31 and 29, respectively. Others scoring this season were Raymond Green, lanky center, 13; Norbert Schultz and Ed Orrill, 3; John Cain, 4; and Bill Johann, 2. Dick Eaglin and Bob Karst, although not scoring, contributed much to the success of the reserve squad.

Interclass Basketball

By virtue of their 32-29 triumph over the sophomores, the juniors emerged with the interclass tourney crown this year.

The sophomores, leading at every quarter, 10-0, 22-7, 27-17, and 39-21 at the gun, advanced to the finals against the juniors, who trounced the seniors 24-14. Quarter scores were 4-2, 10-4, and 15-7, all in favor of the juniors.

The final game was a tight contest all the way. The juniors led at the end of the first quarter 7-4, but the sophs came back to the lead at the half 21-11. Led by O. Tullis, the third-year men came back to the lead at the third step 24-22, then went on to win 32-29.

The seniors defeated the frosh 36-12 in the consolation game, leading at every period, 7-1, 16-2, and 26-12. The juniors were awarded gold basketballs in recognition of their victory. Coaches were Jim Landry, juniors; Bill Moorhead, sophomores; Tom McLaughlin, seniors; and Phil Cole, freshmen.

Phil Kahn, Bob Clegg, and Bob Cheatham advanced to the varsity from the junior squad, while Harold Muncie and Jack Server stepped up from the sophs.

ROW I—John Hoffman, Robert Clegg, William Kiser, Robert Cheatham.

ROW II—Frank Armstrong, Oscar Tullis, Richard Vaughn, Phil Kahn, James Landry, Coach.





ROW I—William Bear, Paul Goebel, Raymond Green, James Craig, Charles Orrill, Frank Armstrong, Robert Clegg, Ralph Sooy, Charles Smith.
 ROW II—Ralph Storm, George Wolfschlag, George Cofield, Clark Ketterman, Bob James, Jack Wallace, John Cain, Robert Karst.
 ROW III—Robert Knoebel, Charles Grooms, James Werbe, Edward Orrill, Harold Muncie, William Ross, Everett McDowell, Vincent Goebel.
 ROW IV—Emmett Kelly, Richard Vaughn, William Moorhead, John Heck, Oscar Bear, William Johann, George Wesbecker, Kenneth Lee.

Track

Madison High School's track team, after being the under-dogs for the past five years, came back this year and turned in an exceptionally fine record.

The Cubs of this year won two out of their three dual meets, finished second in a triangular meet, and wound up fourth in the annual S. E. I. C. track meet, held at Scottsburg.

The Cubs opened their season with the strong Seymour Owls, and due to lack of practice, were defeated by the large margin of 84-21. For their next engagement, Madison's thinly clad journeyed to Scottsburg for a dual meet with the perennial strong Warriors, and after the smoke had cleared, the Cubs were victorious, 54-53. A week later, the Cubs trekked to Aurora for a triangular meet with Aurora and the Lawrenceburg Tigers, and finished second with 48½ points, Aurora winning the affair.

As their year's finale, the Bruins once more went to Scottsburg, this time for the conference track meet. Although Salem won the meet, Madison made an exceptionally fine showing, finishing fourth with 22½ points to their credit, and winning a first place in both the broad jump and the pole vault.

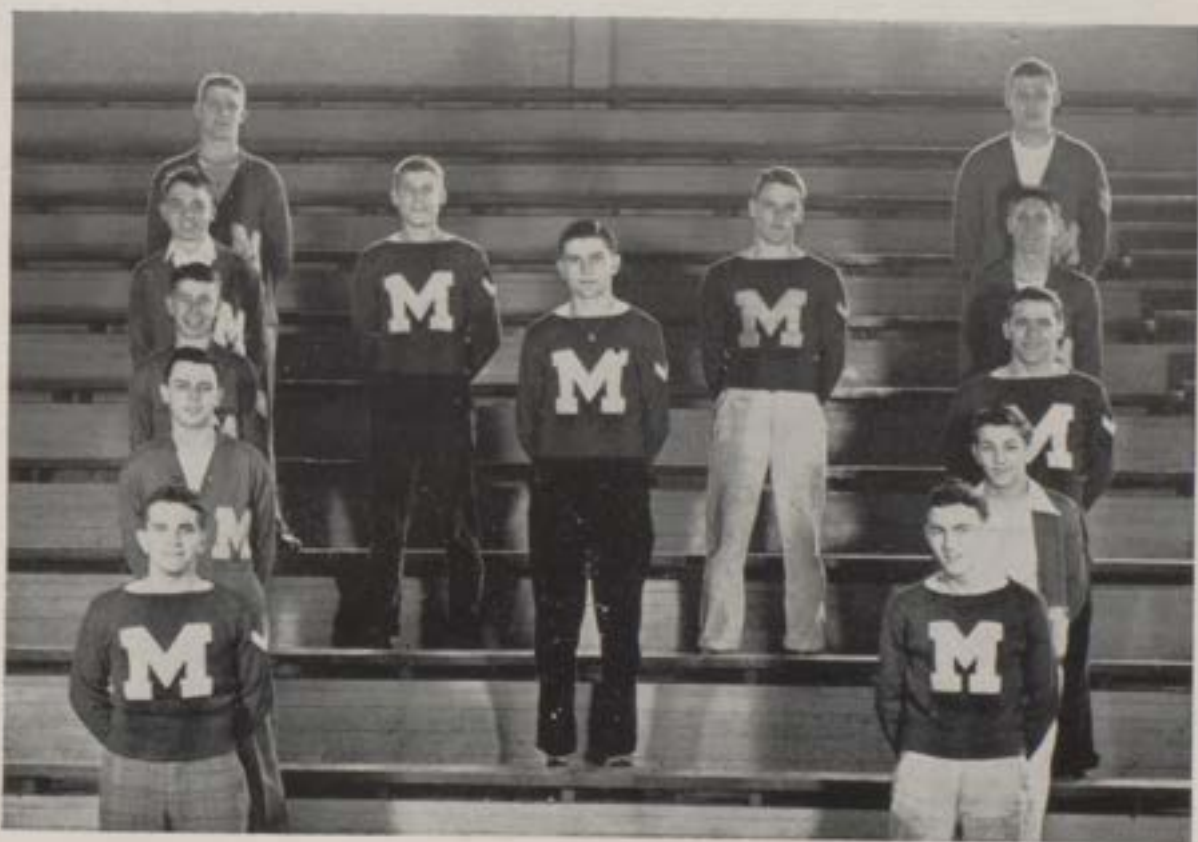
Earning letters this year were Bill Moorhead, hurdles; Bob Clegg, broad jump; Bob James, pole vault; Phil Kahn, dashes; Bill Bear, mile run; Oscar Bear, half-mile; Joe Hill, high jump; Frank Armstrong, shot put; Charles Cain, shot put; and Charles Orrill, middle-distances.

The three lettermen who will be lost by graduation this year are Charles Cain, Joe Hill, and Oscar Bear. Much credit must go to them for their fine performance in the years they have served their school in the field of athletics.

Lettermen

JIM LANDRY, '47, Football, Baseball Basketball.
BOB CLEGG, '47, Basketball, Track.
JACK SERVER, '48, Basketball, Baseball.
BILL BEAR, '49, Track.
FRANK ARMSTRONG, '47, Track.
HAROLD MUNCIE, '48, Basketball.
TOM McLAUGHLIN, '46, Basketball.
BUD SCOTT, '46, Basketball, Football, Baseball.
WILLIAM MOORHEAD, '47, Basketball, Football, Track.
FRITZ KLEIN, '46, Football, Basketball Student Mgr.
PHIL COLE, '46, Football, Baseball, Basketball.
CHARLES CHOWNING, '47, Football Student Mgr.
ROBERT CHEATHAM, '47, Baseball, Basketball.

James Landry, Robert Clegg, Jack Server, Bill Bear, Frank Armstrong, Harold Muncie,
Tom McLaughlin, John Scott, Bill Moorhead, George F. Klein, Phil Cole, Charles
Chowning, Robert Cheatham.





Charles Chowning, Georganna Gray, Dorothy Hassfurther, Dick Demaree.

Cheer Leaders

Each year, at the beginning of the basketball season, the student body elects two boys and two girls to serve as cheer leaders. This year the four yell leaders whom the students voted as their choice were: Georganna Gray, Dorothy Hassfurther, Lloyd Risk, Jr., and Dick Demaree.

In December "Dunie" Risk was married and "retired" from our M. H. S. halls. "Dottie," "Dickie," and "George," however, continued to lead our cheers competently throughout the season. At sectional time, Charles Chowning, one of last year's yell leaders, returned to M. H. S. and joined the squad. So now it's our turn to give three rousing cheers for our cheer leaders.

M. H. S. Alumni—1862-1945

CLASS OF 1862:

Wm. N. Fitch, Mm. Henry Rogers, Emma Morehouse.

CLASS OF 1863:

Jennie Cockran, Sarah Marshall, Asa Hunt, Mary Jewell, Joseph Chapman, Kate Reid, Elisha Whitehead, George Chapman, Alois Holstein.

CLASS OF 1864:

Anna Langtree.

CLASS OF 1865:

Mary Cotton, Alice Conway, Emma Charlesworth, Isabell Duncan.

CLASS OF 1866:

Mary Caplinger, Hattie Ong, Thomas N. Callaway, Ida Zuck, Smith N. Collins.

CLASS OF 1867:

Sarah J. Thomas, Dora Temple.

CLASS OF 1868:

Wm. Voorhies Clark, Lucian H. Richardson, Thomas T. Davidson, Lizzie Dill, Jennie Culbertson, Clara Thompson.

NO CLASS IN 1869.

CLASS OF 1870:

Kate M. Caplinger, Ness Lanham, Josephine Shaddy, Helen Lewis, Mary Calloway, Jennie Hurlbut, Anna Charlesworth, Sallie Reynolds, Mary Mathews.

CLASS OF 1871:

Lilia Foster, Josie Rushton, Lucretia Phillips, Eva Phillips, Lillian Pearson, Dora McCoy, Wm. Alonzo Stanton, Sara A. Worden.

CLASS OF 1872:

Vena Arbuckle, Lizzie Greyble, Jennie Duncan, Effie Duncan, Sarah Benson, Eliza Maria Thompson.

NO CLASS IN 1873.

CLASS OF 1874:

Cora Danie's, Charles R. Barnes, Emma Vauter, Minnie B. Traux.

CLASS OF 1875:

Della Culbertson, Julia Rushton Deputy, Mary G. Taylor, Eliza Sering.

CLASS OF 1876:

Ella Arbuckle, Sulie Ralston, Birdie Clough, Nettie B. Hubbs, Nettie Ralston.

CLASS OF 1877:

Lydia B. Middletown, Bertha B. Taylor, Emma L. Rushton, Lizzie L. Vorbees, Nellie Sanxay.

CLASS OF 1878:

Mattie D. Dougherty, Lue B. Sullivan, Alice M. Hulbert, Lulie L. Smock, Sallie C. Hubb.

Alumni continued

CLASS OF 1879:

Laura M. Arbuckle, John L. Clough, Judie Bright, Katie R. Cochran, Emma Clegg, Callie J. Harrison.

CLASS OF 1880:

Nettie M. Colegate, Nellie Grayson, Josiel Hutchings, Emma M. Davis, Ida Hennessey, Emma R. Vorhees, Annie L. Duncan, Maud Hitchings.

CLASS OF 1881:

Jennie Elliott, Sophronia S. Lewis, Minnie Weir, Frank P. Gerbest, Clara E. Rabe, Lizzie Williams, Cora A. Hennessey, Luella Weir.

CLASS OF 1882:

Kitty Alling, Kate Cochran, Ella Early, Agnes Sanxay, Fannie Vaile, Anna Josephine Crosby, Elmer E. Scott, Cora Cross, Stella Stanley, Charles Allison, Nettie Hurlbert, Hallie Bright, Hattie Joyce.

CLASS OF 1883:

Isa Davidson, Fallie C. Wood, Helen D. Stanton, William D. Sullivan, Ada G. Rushton, Ida Greiner, Fannie C. Morton.

CLASS OF 1884:

Fannie Claplinger, John C. Palmer, Mary Cornett, Charles F. Rea, Mamie Gavitt, Lizzie Richert, Gertie Greiner, Fannie Ross, Anna L. Marquis, Maggie Stockhouse, Dora Marks.

CLASS OF 1885:

Carrie Calloway, Florence Harper, William H. Phillips, Belle Doig, Alice Grossman, Lenora Schwab, Nettie Francisco, Clara Grebe, Mollie Lepper, Anna Weir, Nora Henninger, Charles Middleton, Jessie Smith, Sadie Ida Catherine Hammel.

CLASS OF 1886:

Will B. Aten, Rachael Kronenberger, Agnes Cornett, Laura Peterman, Gertrude Gibson, Charles Stanton, Fannie G. Glenn, Mattie Skillman, Clarissa Hammel, Sarah Sullivan, Leah Kronenberger, Belle Wallace.

CLASS OF 1887:

Emma Brashear, Lillie Muse, Nora Gibson, Lillie Henry, Grace Gahr, Etta Crozier, Jesse Gunliffe.

CLASS OF 1888:

Maud H. Branham, Rose Lovinger, Elizabeth M. Stanley, Minnie Wallace, Margaret DeMoss Fitch, Bertha V. Swope, Grace Tibbets, Lulu Dickson, Carrie Peace, Stella Marie Skaggs, Grace Chapman Maude Mahaffey, Clara C. Price, Lydia G. White, Carrie Davison, Robert T. McCloy, Florence C. Schick, Orilla Williams, Carrie Glaser, Alice M. Quigley, Albert B. Voiles.

CLASS OF 1889:

Benjamin Baer, Ida Hillabold, Robert S. Stanton, Bertha Hennessey, D. May Gray, Minnie Kronenberger, Joseph Stanley, Adela Leland, John Sterns.

CLASS OF 1890:

Clara Aten, Grace Hay, Brainard Platt, Nora Schofield, Mayme Greusling, Flora Schelke, Virginia Given, Nellie Hitz Stanton, Olive Sanxay, Florence Smiley, Earle Martin, Theodore Sullivan.

Alumni continued

CLASS OF 1891:

Kathryn Barton, Florence Cisco, Adelaide Dorsey, Anna Frieddley, Ida Hitz, Bessie Middleton, Margaret S. Crozier, Sallie E. Thomas, Jesse Bowman, Lulie M. Dietz, Pauline H. Ernst, Elizabeth H. Gatton, Agnes Hutchings, Grace Myers, Josephine Schumann, Ella Bras, Agnes M. Doig, Lillie B. Foltz, Fred C. Hennessy, Ada McGregor, Marion Robinson, Annie A. Tait.

CLASS OF 1892:

Nellie Barber, Etta Hoffstadt, Thresa Richerts, Alice Robertson, Bettie Thompson, Maggie Burlage, Thomas Hoffman, Nellie Roberts, Edward S. Roberts, Carrie Weyer, Lizzie Herbst, Robert McKenna, Charles Robinson, Abbie Townsend.

NO CLASS IN 1893.

CLASS OF 1894:

Eva Buchanan, Kate Snyder, Nellie Elliott, Cordia Tate, Edna Whallon, Pearl Shannon, Louie Wallace.

CLASS OF 1895:

Mamie Bishop, Anna Heck, Mamie Hoffstadt, Ferd Litterer, Carrie Mitchell Hayden, Abbie Sering Moffett, Cora Voires, Anna Gardner Cravens, Stella Hitz Whiting, Ethel Jewell, Helen Lodge, Louis Ross, Gertrude Smock, Lola Williams, Fritz B. Ernst, John Hoffman, Bertha Kronenberger, Inez Long, Fannie Schick, Pauline Tague.

CLASS OF 1896:

Gertie Bowman, Suza Brinkworth, Richard W. Buchanan, Ines Carr, Mable Creamer, Bertha Crosby, Margaret Crosby, Louise Diederich, Rebekah Drake Hugh Goode Garber, Beatrice Garlinghouse, Florence Glaser, May Brundage, Mayme Glass, Ella Hampton, Eddie Heuse, Will Leland, David P. Leland, Fannie L. Meuser, Alvin Montgomery, Emma P. Black, Irene Reiser, Margaret Sering, Salome Shannon, Pauline Townsend.

CLASS OF 1897:

Frederick C. Alling, Fannie V. Barrett, May Bell, Leota Bowman, Jeannette Chadwick Davis, Agnes Cochrane, Mary Corya, Walter Dietz, Nellie DeMuth, Carl Dow, Daisy Ernst, Michael Garrer, Ethel Gardner, Bessie Hampton, Margaret Johnson, Frances Hennessy, Tom McGregor, Ford Moore, Roland Rennee, Frank Stewart, Sabina Townsend, Mayme Wallace, Elizabeth Wilson, Arthur E. Wooden.

CLASS OF 1898:

Ella B. Branham, Agnes Carr, Hattie C. Cross, Will S. Dow, Mary H. Firth, Helen Francisco, Robin Graham, Mayme Griffin, Maud Hammond, Lula Harris, Bessie Hitz, Lucy Hughs, Zoe Mitchings, Helen Hennessey, Mabel Johnson, Charles Leonard, Emma Meyer, Gertrude F. Miller, Daisy Nash, Strusie Nash, Mayme Phillips, George Sherlocke, James L. Snyder, Paul Snyder, Bessie Stackhouse, Ben Stewart, Emma Stuart, Lulie Winnefeld.

CLASS OF 1899:

Anna Barton, Cora Brump, Florence Conway, Grace Cochrane, Maud Grayson, Katie Hughes, Reynolds Cosby, Phillip Kestner, Bert Lay, Mabel Moore, Lida Price, Agnes Rea, George Rea, Henry Scofield, George Simpson, Anna Smith, Hodges Sherlocke, Mary Van Horn Ashley, Jeannette Wilson, Robert Rea.

CLASS OF 1900:

Clifford Ach, Stewart Blasingham, Emery Bowen, Myrtle Courtney, Joe Ernst, Mamie Glauber, Joe Griffin, Walton Hampton, Daisy Jamison, Richard Johnson, Rosetta Johnson, George Middleton, Lola Ryker, Elsie Schooley, Pearl Spotts, Charlotte Stanley, Gertrude Sullivan, Robert Swan, Estella Wallace, Jessie Wood, Walter Wooden.

Alumni continued

CLASS OF 1901:

Maud Allen, George Bersch, Lina Bowman, Alice Camerer, Alex Golden, Emma Heuse, Martha Hill, Guy Matthews, Flora Price, Korah Lounsbury, Howard Wallace, Alfred Wood, John Wilson.

CLASS OF 1902:

Alice Straub, May Copeland, Lemuel Richert, Laura Rea, Grace Martin, Bessie Williams, Grace Ringwald, Susie Stewart, May Blackard.

CLASS OF 1903:

Blanche A. Cisco, Benjamin F. Davis, Mary Hill, Ethel Jamison, Clara Miller Lauer, Mantie Montgomery, F. Helen Nesslage, Jeanette E. Simpson, H. Belle Watlington, Richard B. Cooney.

CLASS OF 1904:

Mary Anger, Arthur Ach, Dot B. Barnes, Oscar Demaree, Thomas Finnegan, Clara Heuse, Neil Hinton, Ray Hoffstadt, Leota Lochard, Emma Millar, Oscar Rahe, John Rankin, Howard Richardson, Howard Turpin, Anna Sauer, Stella Straub, Maud Wolf.

CLASS OF 1905:

Ella Crawford, Rose Dickerson, Harriett Angeline Davis, Walter A. Greiner, Rachel E. Haigh, Alice E. Henry, Edith Johnson, Julia R. Klein, Fred W. Lotz, Dorothy Brooke Lotz.

CLASS OF 1906:

Wm. Miller.

CLASS OF 1907:

Mary Bowman, Ethel Calloway, Lena Camerer, William Cochran, Kathrine Crawford, Fred Diedrich, Florence Friedersdorf, Gertrude Gordon, Elizabeth Gossom, Virginia Hitz, Mary Hughes, William Klein, Nadine Millican, George Osner, William Rahe, Willa Walker, Lila Willhoite, Lottie Wolf.

CLASS OF 1908:

Will Anderson, Horton Barber, Moses Cochrane, Everett George, Phillip Kahn, Julian Klein, William Kremer, Harry Lemen, John Lotz, Lawrence Matthews, Herbert Metzger, Harold Patton, Dell Steigerwald, Chester Williams, Robert Williams, Laura Bach, Josephine Dadzow, Mary Driggs, Nellie Ferguson, Marguerite Gibson, Georgia Haumesser, Corinne Johnson, Mary Kermen, Carrie Moffett, Edith Stewart, Jeanette Tester, Lyland Tevis, Grace Wood, Nellie Wallace.

NO CLASS IN 1909.

CLASS OF 1910:

Charles Anger, Stella Brooks, Ethel Copher, Gladys Cox, Stella Cravens, Howard Douglas, Edna Ferguson, Clara Finnegan, Erwin Flora, Fred Flynn, Edna Greiner, Charles Grooms, Carl Grossman, Anna Harper, Juliet Hoffstadt, Frank Holzhaur, Evelyn Hood, Mabel Jessup, Helen Leland, Henry Lyons, Helen McGregor, Bertha Metzger, Mary Phillips, Fred Pommerehn, Alice Radcliffe, Florence Rea, Cora Renfro, Ethel Rivaud, Wallace Robertson, Gertrude Rousch, Blanche Ryker, Leota Stott, Mary Wilson, Robert Yunker.

CLASS OF 1911:

Carl Bach, Cleon Colgate, David Cox, Glenn Hewitt, Oscar Hunger, Julian Keller, Harold Lotz, Tom Luckett, Vinton Matthews, John Niessee, Levant Sample, Robert Stanton, Robert Thomas.

INGLIS

HAS IT

IF IT'S FOUND IN A

DRUG
STORE

KAHN'S VARIETY & GIFT
SHOP

"We please most of the people
most of the time."

Compliments of
HOME HEATING CO.

Compliments of
COLEMAN CO.

Compliments of
REED'S LAUNDRY

Read the
MADISON COURIER or the
WEEKLY HERALD
"Send them to your friends"

Get up early - get up late,
Miss the bus at 7 - catch it at 8.
CITY BUS LINE

Scotty's
Grill

"Enjoy the Best"

"WHERE HOME COOKING
MEETS YOUR APPETITE"

TABLE SERVICE

Phone 440

VAUGHN'S GROCERIES

(Two Locations)

Jefferson St. Walnut St.

WE DELIVER

IRWIN'S FEED STORE

FEEDS—SEEDS—CHICKS

FARM EQUIPMENT

Edward Eckert & Son

FRIGIDAIRE REFRIGERATORS, STOVES

WATER HEATERS, AND DEEP FREEZE

BENDIX AUTOMATIC HOME LAUNDRY

HOOVER SWEEPERS — COPPERCLAD RANGE

GANS'

FURNITURE STORE

TWO LOCATIONS

MAIN STREET

JEFFERSON STREET

and

FUNERAL HOME

SECOND STREET

WE SATISFY

HAND'S

Complete
Food Market

Phone 259

MADISON UTILITIES CORP.

Gas Service in Madison

Since 1851

Compliments of

SAMPLE'S ICE CREAM

CASSIDY'S

Barber and Beauty

Shop

Compliments of

SULLIVAN'S STUDIO

For Highest Quality Pictures

and

SULLIVAN'S CAMERA STORE

The Store With the Free "Information Service"

205 East Main Street

Phone 62-L

Compliments of

HOFFMAN'S
HARDWARE

Compliments of

HUGHES'
TOBACCO
WAREHOUSE

YUNKER MOTOR CO.

CHRYSLER and PLYMOUTH
MOTOR CARS

MACK and FEDERAL
MOTOR TRUCKS

SALES and SERVICE

MADISON, IND.

Compliments of

**WESBECKER
IMPLEMENT
&
TRUCK SALES**

Phone 596

Madison, Ind.

Schultz Bros.

Successors to

HEN & BEN

The Shoe Men

Compliments of

FIRESTONE STORES

108 E. Main Street

Madison, Ind.

Compliments of

CLAPP MOTOR SALES

THE FARMERS' STORE

Stewart Douglass, Prop.

John Deere and Oliver

Farm Equipment

310 Mulberry St. Phone 231

Compliments of

SHELL SERVICE STATION

Harry R. Berry

"Quality Food at Right Prices"

VINCENT GROCERY

Oscar

C.

Bear

LICENSED OPTOMETRIST

36 Years Experience

206 East Main Street

Compliments of
THE ELMER E. SCOTT CO.
Wholesale Grocers

Style—Quality—Value
Shoes—Rubbers—Hosiery
at
MERIT SHOE STORE

SINCE 1845
Serving the public and the medical profes-
sion of this community for a century.
HARPER'S
REXALL DRUG STORE

Compliments of

Hotel

Hillside

Champion

PETROLEUM PRODUCTS

Broadway
Service Station

Funeral Directors
PETERS & MONROE
Ambulance Service Day or Night
Phones: Madison 213; New Wash. 2

WARD'S TAXI
24 Hours
Dependable Service

"ENJOY"
Red Rock Cole - 12 Oz. 5c
RED ROCK COLA CO.

Paul J. Peddie
DRY CLEANERS

OFFICE AND PLANT

122 W. FIFTH ST.

Phone 63

Compliments of

KOEHLER
SUPPLY
COMPANY

STUDENTS

YOU ARE ALWAYS

WELCOME

AT THE

MORRIS

5c to \$1.00

Store

Compliments of

GAUTIER'S
INSURANCE
AGENCY

GENERAL INSURANCE LINES

Phones 631 - 651

Madison, Ind.

Sincere Good Wishes To the Class of '46

BOYCE R. MORROW - RICHARD C. HECK

NEW MILL ST. & NEW INDEPENDENT
WAREHOUSES

"SAY IT WITH FLOWERS,
SAY IT WITH OURS."

F. H. Hitz

SHORT'S
CAB LINE
24 HOUR SERVICE

Phone

564-X

Office: 204 East Second St.

MADISON, IND.

BOWMAN MOTOR SALES
Studebaker Cars and Trucks
SECOND STREET

Compliments of
TUTTLE'S BAKERY
312 Jefferson St. Phone 378-Y

HARRY MARCUS
Clothing and Shoes
Main and West

WYKOFF
Shoe Repair
Service

326 Mulberry St.

PHONE 171-X

Compliments of

SCHNABEL'S
MEAT
MARKET

KATY THE KLOTHIER
Latest Styles in
Clothing - Accessories - Gifts
130 E. Main St. Phone 198-L

BREITENBACH
Pearl Brand Meat
Phone 61

Compliments of
A & P STORE

Compliments of

SCOTT'S 5c & 10c STORE

COLONIAL

CHICK & FEED STORE

Chicks, Feeds and Poultry Supplies

**KY. CENTRAL LIFE
ACCIDENT INSURANCE CO.**

F. C. WATTS, Agt.

Office 111 W. Third St.

Second Door West of P. O.

Phone 455-R

P. O. Box 133

MADISON, INDIANA

**OHIO VALLEY
FROZEN FOOD
LOCKERS**

303-305 West Main St.

MADISON, INDIANA

**BERRY
MOTOR CO.**

DeSota, Plymouth

SALES and SERVICE

North Madison, Ind.

PHONE 7612

Compliments of

C & R PARTS SERVICE

Compliments of

GALLAGHER & MULLEN

Elizabeth Lowe Martha Coleman

Compliments of

FIRST NATIONAL BANK

CENTRAL COAL CO.
West Virginia Coal and Coke
Phone 501

CHARLES H. HUGEBACK
Clover Farm Store
3rd St. and Lincoln Ave.
Groceries - Meats - Vegetables

LICHLYTER BLDG. SUPPLY
& CONTRACTING CO.
Madison, Indiana

Bob
Armstrong's
Super Service Station
MOBILE GAS and MOBILE OIL
Corner Main and Jefferson
Madison, Indiana
PHONE 234

A VAIL SERVICE

IS A FITTING TRIBUTE,
WORTHY OF ONE YOU
ENTRUST TO OUR
CARE.

VAIL MEMORIAL FUNERAL HOME

R. C. WOOLEY
Graduate Registered
Optometrist
Jeweler and Optician

MEESE INC.

Compliments of
MEYERS AND SON
Manufacturing Co.

Schnabel Jewelers

321 Mulberry Street

MADISON, INDIANA

KASPER

Fruits - Vegetables - Groceries
Phone 64 for Daily Delivery

DRAKE MUSIC STORE

Baldwin Pianos
Instruments Sheet Music

McCAULEY CANDYLAND

Home of Celebrated
Fish Candy
Madison - - - Indiana

Compliments of

**COPELAND
HARDWARE CO.**

220 W. Main Street

**DANNER'S
GARAGE**

Pontiac Sales
and Service

WHEEL ALIGNMENT

AAA SERVICE

Phone 158

Madison, Indiana

Compliments of
GOODYEAR SERVICE

Phone 120

FIESTA CAFE

Fountain Service

Luncheonette

LYON'S WELDING

General Welding and Auto Repair

Mulberry Street

FOOTWEAR
HOSIERY
SOCKS

Stanton's

SINCE 1858

MOUNTJOY

Dry Cleaners

HOLWAGER'S GROCERY

1117 W. Main Street

Phone 208

Compliments of

METZGER'S

Shoe and Clothing Store

LODGE HARDWARE

If It's Hardware You Want
We've Got It"

Compliments of

PEGGY DRESS SHOP

"We serve you well
That we may serve again."

NEWMAN TAXI

Phone 126 907 W. Main St.

Standerford
Motor Company

Ford Cars - Trucks - Tractors

Authorized Sales and Service

Telephone 424 319 E. Main St.

Madison, Indiana

Compliments of

**M. W. RISK
& SON**

BODY AND FENDER WORK

Corner Third and Jefferson

Compliments of

THOMPSON and GLASS

WETZEL'S DRUG STORE

Phone 396

W. H. Wetzel

J. H. Fertig

Compliments of

KOLB TIRE SERVICE

Birds-Eye Frosted Foods

WEHNER'S

MODERN GROCERY

STANLEY SHOPPE

Smart Feminine Apparel

Madison - - - Indiana

BETTY MUNDT CANDIES

Home Made

Candies and Ice Cream

WHITE STAR

BUS LINE

4 ROUND TRIPS DAILY

Phone 109-L

Alumni continued

CLASS OF 1912:

Anna Bangertter, Nell Bingham, Libby Clements, Katherine Dolan, Martha Dietz, Mabel Ford, Blanche Garber, Maude Greiner, Mary Frances Hargan, Helen Hughes, Mildred Huntington, Helen Johnson, Bernice Knoebel, Madeline Laidley, Glenn Law, Verna Paugh, Nell Pogue, Marie Rapp, Margaret Robertson, Gertrude Schroeder, Margaret Scott, Frieda Schwab, Minnie Schwab, Gladys Shipman, Bernice Stern, Helen Sulzer, Margaret Vail, Ollene Whealey, Eleanor Wyatt.

CLASS OF 1913:

Mary Reul Barnes, Carrick F. Cochran, Florence Emilie Demaree, Agnes Marie Donlan, Anna Catherine Fehr, Hazel Belle Furbush, Howard G. Haak, Richard Charles Heck, Merwin R. Holtzman, Helen Rosalia Jamieson, Alfrieda Anna Kalb, Lelia G. Lamb, Helen Charlotte Lotz, Mayme Elizabeth Rivaud, Nellie Beatrice Rivaud, Alvin L. Rogers, Mabel Ryker, John H. Sauer, Ophelia Elizabeth Schnitter, Golden Pruitt Skeldon, Margaret Gertrude Stillhammer, Mary Spaulding, May Demaree Tevis.

CLASS OF 1914:

Edna C. Augustine, Daisy Elizabeth Adams, Theresa B. Bierck, Stanley Cochrane, Ada Randall Colgate, Elzia Cumiskey, Bess Davison, Mary Ellison Francisco, Laura F. Gertz, Howard S. Hitz, Helen Martha Hatch, Charles P. Heck, Carolyn Victoria Hargan, Carmon Ercil Hankins, Ellen Gezn Harper, Mildred Bertha Hummel, Vera V. Hammel, Wilhelmine Hazel Heimsath, Chris Herbig, Edna Marie Kestner, Marcella B. Keller, Simeon E. Leland, Beatrice Stewart Lanham, Cecile B. Leakey, John S. Matthews, Boyce R. Morrow, Everett Phillips, Fancis Prenatt, Earl R. Rogers, Nina Alliene Ryker, Robert W. Shaughnessy, John P. Shaughnessy, Eugene C. Sauer, Edith Sauer, Frieda Regina Schelke, R. Lewis Stern, Erhel V. Shockley, Mildred Evan Tibbets, Rhyden F. Vawter, Martha Cassandra Winter.

CLASS OF 1915:

Alice M. Adams, Donald Reul Bear, Eleanor Annitta Beerck, Goldie M. Bird, Wallace Bishop, William C. Bowman, Roy E. Brown, Irene Victoria Bucknell, Nora Frances Bucknell, Ella Rhea Carson, William Aaron Clay, Jessie Anderson Copher, Burton N. Eaglin, Robert Sering Ernst, John Robert Fagan, Anna Louise Finnegan, Alliene Ruth Garlinghouse, Gladys Marie Grayson, Nadine E. Harr, Claire Margaret Hitz, Mabel O. Housefield, John Moffett Inglis, Albert Johnson, Mary Antoinette Keller, Mary E. Leland, Bernard Charles Lotz, Frieda Dortha Lotz, Bessie B. Lyon, Mildred Marie McKenna, Alice Joyce Millar, Elsie Catherine Mersdorf, Charles Aaron Nichols.

CLASS OF 1916:

Maud Anderson, Winifred Glenn Ashby, Tressie Oella Augustin, Rayburn Castle Austin, Ruth Amethyst Bellamy, Joseph Randell Colgate, Aldean Copeland, Charles Rogers Creamer, Sena Marie Dow, Irine Marie Dunne, Raymond Earl Francisco, Leo Marguerite Haskell, Edward Forrest Holtzman, Pauline Ruth Hughes, Mary Bryan Jackson, Charles Richard Klein, Lora Florence Lee, Charles Clifford McCullough, David H. Noble, Nettie Agnes Ralston, Mary Grace Sauer, Harry Bernard Shaughnessy, Edna Opal Sherman, Ella Agnes Stuart.

CLASS OF 1917:

Hazel Bessie Augustin, Bernice Bucknell, Leah Victoria Barber, Charles Alois Beerck, Cullie Brook, Jessie Mae Buchanan, George S. Cowlam, Robert Caplinger, Rosetta Cumiskey, Linda Williams, Clements, James William Gus Campbell, Alfred Schofield Donat, Earl E. Douglas, Bertha Dell Eaglin, William Frederick Friedersdorff, Ruth Ernestine Hanna, James Hargan, Harry A. Horton, Margie Ann Hancock, Mary Elizabeth Hoefling, Adelaide M. Jones, Charles Russell Kleopfer, Mabel Claire Litson, Louis Coleraine McIntyre, Harold J. McKenna, Harriet Criegler McGlavson, Accia S. Martin, Floyd Earl Meek, Jessie M. Mechem, Millburn W. Mickel, Alene Marie Oliver, Mary Elizabeth Pratt, Alyne Frances Pate, Clara Elizabeth Ringwald, Maud Hammond Schad, Goldie E. Smith, Margaret Steinberger, Ben Morris Strother, Marion M. Singer, Edward Skeldon, Eleanor Armstrong Tevis, Virginia Tevis, Martin Earl Turner, Marie Vaughn, Charles Wainscott, Barbara Wunderlich, Marie K. Yunker.

Alumni continued

CLASS OF 1918:

Thomas Carlyle Antrobus, Roy Black, Variance Tremma Brett, Myrtle Mary Bucknell, Agnes Lillian Demaree, Howard Hunter Denton, Ruth Donat, Pauline Virginia Ernest, Wilhelmena Edith Furnish, Paul Edwin Fewell, Mildred Lucille Grayson, Robert Edward Haak, Merritt Colgate Harper, Sarah Louise Heath, Glenn Fairbanks Hewitt, Glenna L. Joyce, Clara Edna Lanham, Mabel Lanham, John Ellison McGuire, Ernestine Marie Miller, Maude Mildred Miles, Francis Leroy Peck, Nellie E. Robbins, Marianna Schofield, Roy H. Server, Anna Marie Smith, Donald H. Weyer, Dorcas Willyard, Maydene Woodfill.

CLASS OF 1919:

Hilda Armand, Helen Margaret Crozier, T. Garrett Donlan, Nesda Louvada Garlinghouse, Herbert N. Gourley, Margaret Emily Horton, Richard M. Johnson, Louise Johnson, Herman Lester Jessup, Cellette Blanche Keller, Benjamin Gertz Lotz, Stanley J. Leland, Maurine J. Merritt, Norma Louise Miller, Mildred Mickel, Margaret Shannon Reed, Marie Stodghill, Helen Rodgers Sauer, Samuel Sauley, Charles S. Stanton, Anna Sauley, Robert K. Schelke, Charles William Schnabel, Henry Nathan Sauer, Thomas P. Vincent, Dorothy Vail, Wray Randolph Waters, Sophie Louise Wunderlick.

CLASS OF 1920:

Hilda Armand, Hazel Barber, Harry Benson, Margaret Buchanan, Helen Chandler, Sidney Cofield, Fred Coleman, William Colgate, Sam Colgate, Bernard Copeland, Edith Demaree, Helen Demaree, Charles Dunn, Hilda Dunn, Louise Eckert, Louis Friedersdorf, Aline Gerdes, Edward Hunger, Myrtle James, Roy Keller, Myra Lemen, Helen Litson, Vivian Magers, Ruth Martin, Joseph Maxwell, Lucille Miles, Joe Moorhead, Mabel Morrow, Mary Morrow, Paul Peckie, Louise Pullem, Grace Ralston, Laura Jean Ralston, Marcella Ralston, Rueben, Schirmer, Francis Schofield, Alice Schnabel, Charlotte Schwab, Margaret Scott, Lowell Smith, Freda Stevenson, Esther Taylor, Hannah B. Tibbets.

CLASS OF 1921:

Raymond Barber, Wesley Bear, Edward Bird, Edith Black, Lucie Mae Brett, Arline Buchanan, Mae Buchele, Harold Cochrane, Nadine Cox, Lesta Crawford, Della Cross, Gaylord Crozier, Brooks Davis, *Robert Demaree, Margaret Dixon, Redford Dorsey, Daisy Ernst, Sam Feuerstin, Bertha Geile, Agnes Graham, Mary Helen Haigh, Raymond Jessup, Mary Kampe, Hannah McIntyre, Gieve McNeal, Daniel McGuire, Mary Maupin, Lloyd Neal, Lola Phillips, May Phillips, Charles Pratt, Arthur Pullem, Earl Ringwalt, Catherine Roe, Martha Schlereth, John Scott, Raymond Sherman, Stanley Shober, Evelyn Smith, Anna Stanley, Elmer Sulzer.

CLASS OF 1922:

Harry Baum, Gertrude Baxter, Lucille Bovard, Anna Ceelia Ford, Russel G. Hoelling, Richard Vawter Irwin, Howard E. Lanham, Wilma K. McCord, Elinor M. Manville, Randall Moreland, Martha Mundt, Delia Snyder, Milton R. Snyder, Roger L. Steinberger, William G. Steinhardt, Mary Ellen Stewart, James Douglass Tyson, Robert Charles White, Herbert Charles Zeiring.

CLASS OF 1923:

Edith L. Baxter, Raymond Orison Bowman, Sarah Elizabeth Brushfield, Horace Buchanan, Howard Buchanan, Mildred Elizabeth Buchanan, Louis G. Bumen, Carolyn Elizabeth Cochrane, Leroy Conner, Edna Cooney, *Raymond James Cope, Warren H. Coppage, Louise Cowan, Wilson Doig, *James H. Demaree, Marion B. Ford, William Gallagher, Bess Hampton Garber, Stourton Geile, Ralph Horton, Raymond M. Jones, Gertrude H. Klein, Catherine E. Krue, Maurine Frances Lee, Lois Edyth Lindsay, Frances Virginia Litson, Edna Lora McGlasson, Margaret E. McGuire, Elizabeth Hendricks Moffett, Suzanne Lenore Moffat, Lloyd Gilbert Neal, Joseph H. Niese, *C. Frederick Phillips, Agnes T. Ralston, Mary J. Ralston, Garfield Rogers, Roy Rogers, Shirley Rogers, Elizabeth Roe, Lottie C. Schirmer, Cooper Schlereth, William Schnabel, Jr., Foreste E. Smith, Marie E. Snyder, Pauline E. Spaulding, Virginia Kathrynne Turner, Mabel Louise Wagener, Mary Ella Williamson.

* Those who served in World War II.

Alumni continued

CLASS OF 1924:

Mildred Louise Augustin, Maysel A. Bare, Bertha Althea Bliton, Theresa Marie Buchanan, Frieda M. Buck, Lester E. Campbell, Dale F. Copeland, Kathryn E. DeMint, Clara M. Diederich, Elizabeth Frances Dierkes, Hilda Marie Flint, George E. Geile, Beatrice Irene Glone, Mathilda Frances Graham, Virginia Louise Goldren, *Virgil D. Hand, Carleton E. Hargis, Victor J. Hertz, Joseph F. Hunger, Mertie A. Hoffman, Graham F. Hand, Dorothy Jones, William H. Lilly, Mary Emily Lodge, Jean Wagner Lodge, Virginia Carolyn Marquette, John Mersdorff, Jr., Mildred Virginia Moreland, Dorothy McGuire, Herbert D. Niles, Esther Cross Pheasant, Lydia Barton Powell, William Pfortner, *Jessie L. Richey, Charles R. Risk, Fayette E. Ramsey, Roy C. Robinson, Edith Sauley, Andrew N. Taff, Granville L. Taylor, Pauline Tyson, Mary Lillian Trout, Ethel Wade, Ruth Wentworth.

CLASS OF 1925:

George Alexander, Ruth J. Barton, Frank L. Bird, Nancy Lee Butler, Dorothy P. Chapman, Thomas McKenna Cisco, Katherine Harriet Coleman, *Edward L. Courtney, Mildred Davis, Vinetta Maude Harper, LaVerne Nadine Hostutler, Margaret E. Leinenweber, Esther E. McCartney, *James White Mitchell, Norma Adalene Norisz, Martha Louise Pfeister, David Richert Sample, George Shober, Agnes Maude Smith, Edna Virginia Trout, Helen P. Vernon, William Willis, *Bernard Baum, Margaret Bellamy, *Kenneth Buchanan, Robert E. Chandler, Kathryn Myra Childs, Elizabeth Laidley Clements, Alma Lee Conn, Merle Cripe, Dorothy Caroline Eckert, Anna C. Kahn, Burrell C. Lawton, Morris Lorenz, Viola Fern McLaughlin, Edgar W. Moreland, Allison F. Patton, Eva Isabelle Pribble, Mai Louise Siddall, Marjorie Carolyn Smith, A. Louis Spivey, Jr., J. Thomas Tullus, Edith Waters, Donald Zearing.

CLASS OF 1926:

Mary Louise Anger, William Frederick Buck, Marguerite E. Cripe, Thomas Finnegan, Mildred Irene Heinrich, Irene G. Hunter, Ernst Moore Hampton, Eva Jones, *William Martin Kasper, John Knoebel, Lola Lockridge, Ethel McCartney, Elizabeth Dillon Rea, Martha Francisco Roberts, Robert Renschler, *Bernard G. Steinhardt, Anne Elizabeth Schofield, Fern Louise Stewart, Harry C. Wilde, *William John Bierck, Dorothy Cox, Harold L. Davis, Hannah Mary Golden, Stella Fay Heinrich, Bertha James, Ida Elizabeth Johnson, Martha Evelyn Krom, Allie Mae Kirk, George Chauncey Lewis, Jessie May Lodge, William David Roth, Norma May Rutherford, Garnet Marjorie Risk, Dorothy Allene Ramsey, Sebastian Thomas Sheets, Virginia Madelyn Skeldon, *Chester Schnabel, Melvin J. Yater.

CLASS OF 1927:

Edith Etta Anderson, Hortense Buchanan, Virginia Boicourt, Adam Christman, *George R. Crawford, Wallace Edward Childs, Kenneth D. Chatham, John A. Chandler, Feirde Francisco, Denzel M. Fewell, Pauline Smith Fordyce, Sarah Nelda Gray, Helen Emma Geyman, Mildred O. Gray, Margaret Elizabeth Gosson, Margaret Rebecca Harper, Frank J. Hertz, Roy Denny Holwager, Birl O. Hill, Charles C. Humphrey, Gladys Marie Hillis, George F. King, Louise Stanley McKay, Virginia Kathryn Niese, Mildred Merrill Perry, Gilbert D. Quinn, Frances Rogers, John Ray, Lewis Ralston, Edna Hazel Sheets, Kathleen Smith, Charlotte Stanley Schofield, Eleanor Lucile Stewart, Robert H. Schirmer, Charles J. Schmidt, *John Shipley, Lucian Bayard Spauling, *Frederick R. Schad, Gracie Edna Truesdell, Jean Eloise Tornace, Martha Tandy Vaughn.

CLASS OF 1928:

Helen Louise Morrow, William Sherman Conway, Ida Ruth Mathews, Maurice Finnegan, Charles Edwin Mills, Daniel Monroe Mills, Dorothy DeMint, George D. Yater, Mary Elizabeth Frechtling, Ruby Lucille Rodgers, Maude Edna Shirley, Josephine Klein, Inez Belle Barber, Nelson Bivens, *Nelson W. Boicourt, Aline Brooks, *Noble H. Burdett, Burton Perry Chambers, Ellen L. Christman, Margaret Harriett Collins, Alma Gertrude Demaree, Wilma Evelyn Denny, Gladys Florence Diederich, *John B. Eckert, Stella Hill Firth, Martha L. Gallagher, Naydene Francis Goins, Anna Marie Gunnison, William Walter Hertz, Charles H. Hirst, Dorothy H. Hoelling, Ruth Doris Holwager, Virginia Lucretia Hyatt, Wendell M. Jacobs, Gertrude May King, Charles S. Klein, Warren J. Lanham, *Arthur Layton, Mary Loren-

* Those who served in World War II.

Alumni continued

CLASS OF 1928 continued:

Leinenweber, Hiram G. Lemen, John Rowison, Joseph Ernest Rugherford, Helen Virginia Schnabel, Bernard W. Schultz, *James Robert Scott, Nicholas Charles Steinhardt, Lena Grace Stewart, Jessie Louise Tidball, Joe S. Vail, Mary Ella Weber, Mildred Margaret Weber, Charles Williams, *Albert C. Winter, *Robert F. Zepf.

CLASS OF 1929:

Martha Richert Eckert, *Charles W. Geile, Mabel Kathryn Raney, Howard W. Hillis, Emily Harper Rea, Anna Rosalia Koehler, William George Schwab, Edna Catherine Eckert, Virginia Louise Diller, Mary Jean Drake, *William H. Joyce, Margaret Opha Andres, John David Mitchell, Anna Eaglin, Wilhemina L. Gourley, Lona Eileen Vestal, Adelbert S. Albright, Gladys Marie Black, Asa Gilbert Buchanan, *Charles Frederick Chapman, *John A. Crozier, *Glenroe L. Danner, John H. Driskell, Jr., Clarise Elston, Daniel H. Garry, Jr., Marie Isabelle Golden, Jean Linwood Gray, Horace Ernst Hamilton, Geneva F. Harper, Ralph L. Heath, Thelma L. Jenkins, Margaret Jean White, Ralph Edward Kahn, *Robert Stanley Kendall, Geneva Stewart Lee, Pauline Lemen, Margaret Jean Lewis, Ethel Louise Meyers, *Graham Cooke Miller, *Charles H. Norisz, Joan Cravens Ogden, Louise Elizabeth Quinn, David Lawrence Spann, Walter W. Schmidt, Clair Smith, Edna Lee Taff, Anna Dalphene Turner.

CLASS OF 1930:

Wilbur R. Barton, Virginia Elizabeth Buck, Cordia Virginia Chambers, *Hilbert Squibb Cofield, *Harold Edward Jones, Mary Capitola Keelty, Bessie M. Kloss, Martha Jean McKenna, Lucie Clair Miles, Margaret Eleanor Rea, Margaret Jeanne Spicer, Bernice LaVerne Turner, Hubert Frank Bersch, Luella May Black, Meredith Beatrice Bright, Janice Esther Burkhardt, Winnie Charlotte Collins, Helen Pauline Cripe, *Cornelius T. Drake, Myrtle Geneva Fancher, *Francis G. Ferguson, Gertrude Marie Gourley, Charles Edward Haungs, John Oliver Holwager, Charles Francisco Horuff, Virginia Lee Howe, Betty M. King, Vivienne L. Kirgan, Helena McGill, *Van Earl Miller, Herbert A. Miller, Henry L. Moore, Eleanor Frances Morrow, Mildred Dorothy Petit, Earl Pommerehn, Leota Geneva Robbins, *Charles Rochat Scott, Grace Sedam, Norbert Anthony Steinhardt, John H. Thacker, Robert Elmer Turner, Charlotte Ellen Torrance, Eunice Kathleen Wentworth, Lena Catherine Willis, Opal Lillian Wilson, *Harold Albert Yiesla, Helen Jeanette McKay.

CLASS OF 1931:

Elizabeth Barber, Frances Aldean Brindley, *James Sage Chadwick, Eugene Louis Cooper, Helen Lee Farley, Nellie Elizabeth Jones, Caroline Bradley McKay, Marjorie Larimore McKay, Mary Elizabeth McKeand, Emily Elizabeth Nickell, Harold John Nisse, Drusilla Lanier Ogden, Helen Lucille Schirmer, Mildred Anna Tevis, Mildred Irene Thompson, Gladys Marie Vaughn, Lucile Elizabeth Yater, *Jacob Henry Bersch, Edward J. Bronner, John Emerson Collins, *Richard Cox, *William David Cox, Mary Louise Crozier, Erma June Davis, *William A. Dixon, Walter Wallis Dowell, *Joseph DeLoste Eckert, Margaret Edson, Inez Alent Eldridge, Julius George Fisher, Martha Rebecca Goodrich, Florence Gladys Gourley, Bernice Swanell Gray, Wilma Frances Gray, *Edward R. Greene, *Jesse L. Hall, Lavina Jane Harsin, Jean Abigail Heath, Serelda Lemen, *Howard Boone Lodge, *Robert Knox Lodge, Nell Lucille McCauley, *Dwight Mills, *John William Miller, Dorothy Hempstead Patterson, George C. Perry, Mary Margaret Pfortner, Kenneth Ray Smith, Melvin Spotts, *Charles Keith Stewart, Chester Walker, Charles Louis Wettrick.

CLASS OF 1932:

Annette Jean Fewell, Lula Belle McCauley, Alberta Clara Zepf, John Robert Morrow, Mary Helen Taff, Joseph Cooper, Jr., Dorothy Dean Denny, Ruth Kathryn Otter, Melva Helen Lohrig, Irene Thompson, Frances Clements Ross, Olive Marie Smith, Charles C. Bersch, Orvel M. Bird, Dorothea Dene Black, Myrtle Emma Buchanan, *John H. Cheatham, Franklin Lee Crutchlow, Charles Lincoln Demaree, Frieda Mae Denny, Pauline Alma Eckert, John L. Firth, *Burkert Friedersdorf, Frances Marie Garry, Charlotte Josephine Golden, Alma Emma Gray, Hendon Harris, Helen Mary Hertz, Agnes R. Jacobs,

* Those who served in World War II.

DEMOCRACY

JOIN
NOW

MAKE JEFFERSON POST NO. 9 1000 STRONG

The American Legion



After

School — The Game — Studies
It's "The Canteen"

Compliments

JEFFERSON POST NO. 9

MADISON, INDIANA

LOYALTY

JUSTICE

FREEDOM

Clifty Falls Mills, Inc.

MANUFACTURERS

TROWS PERFECTION FLOUR

and

WHITE SATIN FLOUR

POULTRY & LIVESTOCK FEEDS

THIRD STREET

MADISON, IND.

PHONE 252

CLIFTY

Compliments of

Madison Coal
& Supply Co.

VISIT

Hinkle's

24 HOUR SERVICE

Delicious Sandwiches

Light Lunches

204 W. Main

PROFESSIONAL DIRECTORY

DOCTORS:

WM. A. ABERNETHY, D. C.
L. F. BEETEM, M. D.
A. G. W. CHILDS, M. D.
J. P. CHRISTIE, M. D.
E. C. COOK, M. D.
F. C. DENNY, M. D.
ANNA GOSS, M. D.
G. A. MAY, M. D.
L. A. McCLANHAN, D. C.
E. J. SHARMAN, M. D.
W. A. SHUCK, M. D.
O. A. TURNER, M. D.

I-C RESTAURANT

Sandwiches - Plate Lunches

LAWYERS:

DONALD BEAR
COOPER & COOPER
ARTHUR D. CUTLER
CURTIS MARSHALL
GEO. METFORD
HARRY NICHOLS
W. A. ROBERTSON
PAUL SCHNAITTE

DENTISTS:

DR. F. S. HENDERSON
DR. S. H. FEUERSTIN
DR. P. E. FEWELL
DR. P. N. KESTNER
DR. R. E. RINGWALD



The Mark of Excellence

The Annual with Personality
Unusual Beauty and Dignity;
The Reflector of the Spirit
and Ideals of your School
can be Yours through our
Services.

Refer to winners of past
Kentucky Dress Association
Contests for our record
of "Better Annuals."

Bush-Krebs Co.

ENGRAVERS ..
COLLEGE ANNUAL
· EXPERTS ·

Louisville, Ky.

"The South's Most Progressive Annual Engravers"

3



*STATE
PARK* Clifty Inn

MADISON, INDIANA

Rest and Relaxation

Amid Scenic Beauty

OPEN YEAR 'ROUND

R. McKIM
& CO.

Highest Grade Coals

Phone 117

Steigerwald
INSURANCE
AGENCY

All Kinds of Good Insurance

K. of P. BUILDING

Phone 517-L

Madison, Indiana

MAY ALL YOUR FUTURE
ENDEAVORS BE EVER
SUCCESSFUL IS THE
SINCERE WISH
OF THE

Lytle
FUNERAL HOME

Compliments of

Rousch's
Dairy

Madison, Ind.

FOR REAL ESTATE

C U S B 4 U B Y
R S E L L R T R A D E

HARRY
LEMEN

Real Estate

Phone 143

409 W. Street Madison, Ind.

Compliments of

MADISON
TREATRE
COMPANY

OHIO & MADISON
THEATRES

HANOVER CABINET SHOPS, Inc.

Hanover, Ind.

Custom Built Kitchen Corner and Utility Cabinets

Store Fixtures and Fixture Hardware

Hallways and Room Paneling of Walnut, Mahogany,

White Oak, Birch, and Other Woods

PHONE HANOVER 30-L FOR ESTIMATES

Compliments of

RICHARD M. JOHNSON

Insurance Agency

IF IT'S SOLD
IN A DRUG STORE
YOU
CAN GET IT AT

Rogers

SPAULDING
& SCHWAB

Dry Goods and Ready-To-Wear

"A Home Owned Store"

112 E. Main St. - Madison, Ind.

Phone 29

CENTRAL HOTEL
CAFETERIA

*Our Food
Talks For Itself*

Compliments of

Cooper's Corner

Hanover, Indiana

Compliments of
PEARSON'S MEAT MARKET
Phone 414

MADISON RADIO SERVICE
Records and Radios
Phone 222-L.

Compliments of
ECONOMY DRY CLEANERS

BOICOURT'S
Beauty Shop

Compliments of
STAR FOOD STORE
801 W. Main Street
Phone 246

FURNISH'S
"LITTLE FOLK SHOP"
The Only Baby Store in Town

A FRIEND

Compliments of
MACK and SHIMMIE'S TAXI
Phone 294-L

Compliments of
JUDY'S GROCERY

Compliments of
MADISON COFFEE SHOP
Madison Hotel
Phone 14

Compliments of
**Haigh
Funeral
Home**

**National Branch
Bank**

**Madison Safe
Deposit &
Trust Co.**

Compliments of
MADISON HOTEL

AVON BEAUTY SALON
318 W. Main St. Phone 565-Y
Mildred Meredith, Mgr.

RAY WARD'S CAB SERVICE
775 Presbyterian Ave.
24 HOUR SERVICE
Phone 228

HERFF-JONES COMPANY

DESIGNERS AND MANUFACTURERS OF

SCHOOL AND COLLEGE JEWELRY

MEDALS

GRADUATION ANNOUNCEMENTS

CUPS AND TROPHIES

INDIANAPOLIS, INDIANA

Jewelers to Madison High School

Knoebel-Bird Clothing

THE STORE OF
BETTER VALUES

Ralph T. Knoebel and J. H. Bird

"Don't Worry - Be Happy"

OGLE and PORTER

Compliments of

HERTZ SHOE STORE

When Inexperience Can't Do It,
Bring It to Experience

C. M. MILLER WELDING SHOP

Established 1923

MAIN MARKET

Groceries - Meats

Birds-Eye Frosted Foods

601 W. Main St. Phone 591-L

Compliments of

RICHERT HOUSE

Tourist Rooms

Compliments of

L. J. HILL

Buick

BLACKARD'S SANDWICH SHOP

"GIVE US A TRIAL"

221 E. MAIN

OFFICE - SCHOOL
EQUIPMENT - SUPPLIES

- * Globe - Wernicke Desk and Files
- * Cramer Posture Chairs
- * L. C. Smith Typewriters
- * R. C. Allen Business Machines

Rousch's

Greeting Cards - Stationery

SOUTHERN INDIANA'S
BEST
CLOTHING STORE

John Knoebel
& Son

Hart-Schaffner & Marx Clothes
Stetson Hats and Arrow Shirts

THE RELIABLE STORE

Compliments of

Maddox
Tobacco
Warehouse

HOUSE
OF FLOWERS

"CORSAGE SPECIALIST"

Mr. and Mrs. Emmett S. Wood

Corner of Main and Mulberry

Phone 740

Thanks for Your Patronage
and
Welcome To Our New Shop

Compliments of

Wilson's

FURNITURE and APPLIANCES

105 W. MAIN ST.

MADISON, IND.

Phone 322

"Where Good Furniture
Costs Less"

W. H. MILLER & SONS LUMBER CO.

LUMBER AND BUILDING
MATERIAL

Sash Doors and Mill Work

Compliments of

WHITE'S STUDIO

"THE STUDENT'S CHOICE"

DEMOCRAT
PRINTING
COMPANY

"Your Printer"

Goodman-Jester

DEPARTMENT STORE, Inc

Dry Goods - Wearing Apparel

THE STORE
WHERE
QUALITY AND VALUE
MEET

ASK US, WE HAVE IT!

The Madison
Lumber Co.

"At the Sign of the Nail"

Madison - - - - Indiana

Madison Light
& Power Co.

ELECTRIC SERVICE

MADISON

Phone 824

Alumni continued

CLASS OF 1932 continued:

William W. Jacobs, Helen Fern Jones, Emma Frances Kendall, Dorothy Louise Klein, Norma Loraine Konkle, Ronald V. McKay, Jane Louise Miller, *Scott K. Mills, Elizabeth Corinne Mitchell, Mildred Louise Poindexter, Orville H. Reed, *Richard Robinson, Margaret Marie Schmidt, Georgine Rea Sherlock, Foster Stutsman, Verna Catherine Schirmer, Graham A. Tevis, *James Morrison Tidball, Gilbert Understeller, Neva Leota Willis, Alice Bernice Woodfill, Frances Ellen Woodfill.

CLASS OF 1933:

Neoma Shingleton, Herman C. Yater, Robert Bruce Moffett, Mary Kathryn Boicourt, Edna Adeline Nickell, Emma Margaret Claflin, *Robert T. Reed, Betty Mountjoy, *Ernie Lemen, Ruth Marshall, Mildred G. Thomas, Margaret Wolf, *Charles F. Renschler, Catherine E. Einsel, Richard Young Patterson, *John Bersch, Catherine L. Carr, Stella C. Collins, *Charles W. Courtney, Elizabeth Cox, Thelma E. Fancher, *Robert M. Gourley, *Robert G. Greiner, Thomas H. Hargitt, Marilouise Harman, *Edgar Hearne, Marcella C. Hoffman, Robert C. Hoffman, Thelma E. Holwager, *Charles Hugelback, Margaret Hugelback, Marie Kellems, *Wilbur L. King, Alberta Klein, Marianne E. Knoebel, *Ford Kohl, Mary Anna Krueger, *Billy Lawson, *Dalice F. Lynn, *Francis J. Matthews, *George H. Miller, James C. Oakley, Anna L. Pfortner, *Charles W. Potter, Elizabeth W. Robertson, Edith Mae Sando, *Dormond Schoolcraft, *Edwin Schultz, *Everett Stutsman, George H. Thieman, Frederick White, Eleanor Jeanette Wolfe.

CLASS OF 1934:

Jessie Eaglin, Pauline Marie Ryker, Sam M. Moffett, Alice Chowning Coffin, *Enos H. Baglan, Everett Welby Heath, Margaret Jean Voiers, Wilma Kellems, Ruth E. Ramsey, *John Robert Cooke, Helen Marr Hill, Erma A. Furnish, Marian Georgine Cofield, Patsy Lowey Cochrane, Katheyn Calland, John Calvin Black, Marie M. Potter, *Frank E. Buchanan, Bertie Frances Campbell, *Richard Chadwick, Margaret Jane Chatham, Frances Jane Crawford, Henrietta K. Crawford, *Charles Cooper, Pearl J. Crutchlow, *Philip Martin Daily, Anna Kathryn Danner, George F. Denny, Catherine Louise Genter, *Walter E. Hassfurder, *Joseph Harold Hertz, Anna Laura Hill, Martna Hudson, Dorothy June Jenkins, Violette R. Jenkins, Mildred Virginia Jones, *Robert Henry Kalb, Clarence H. Knoebel, Lillian Myrl Kremer, Charles Layton, Welby Layton, *Gavin Knox Lodge, *William D. Miller, Catherine Ross, *Gilbert Schnabel, Mary Theresa Schnebelt, Mildred G. Schultz, *Shirley Smith, Bea Smith, Portia Tevis, Richard Weber, Helen Marie Weber.

CLASS OF 1935:

Mary Elizabeth Meyers, *Paul Edward Steinhardt, Sally Virginia Otrich, Jeanette Turner, Mary Louise Francisco, Margaret Catherine Wallace, Mary Elizabeth Battles, Mary Elizabeth Crawford, Marjorie Sauer, *William R. Smith, Betty Lucille Quinn, Ruth Lockridge, *Gerald E. Amos, *William L. Amos, John Alban Blake, *Martha Lucille Blaze, Jack C. Callaway, Charles Nathan Cowan, *Joe E. Cox, *John C. Cox, Clara Crutchlow, Alice Louise Daroertt, Evelyn Dew, John F. Genter, *Luther W. Giltner, *George F. Harper, Mary Jane Hargitt, Clifford E. Hassfurder, *John William Hoefling, *Maurice O. Hoffman, Martha King, Floyd Lane, *Philip A. Layton, Ruth Elizabeth Layton, *J. Chester Lodge, Margaret Lynn, *Robert E. McCauley, *Theodore L. McKay, Eleanor Wanda Miller, David Patterson, Alene B. Peake, Charles W. Peake, *John Peddie, Bradford Roberts, Ben Schnabel, *Melvin Schnabel, Helen Ruth Smith, William Thomas, Elizabeth Eileen Turner, Eleanor Uebele, Emerson Wilson.

CLASS OF 1936:

Dorothy Jean Cornage, Anna Margaret Pender, Clarence Burton Sheets, Martha Elden Danner, Sarah Isabel Cooke, Pauline Tingle, Helen Karen Boggess, Edna Louise Miller, Maurice Fredric Herbst, Vivian Thompson, Helen Jean Kremer, Kathryn Marie Powell, Roberta L. Winkel, Harvey Albert Alexander, Ramona E. Bish, *Clyde Louise Bragg, Kenneth E. Bush, Lucille N. Cranford, William Crawford, Marjorie Frances Denny, Lillian Eileen Finch, Margaret Anne Furnish, Ann Elizabeth Glauber, Mary Louise Greiner, Carroll E. Heath, *Joseph Preston Joyce, *Judson A. Klein, Bernadine Kremer, Andrew Graham Larimore, Laverne McClure, Nerine Eloise Lockridge, *William Perry, *Petros C. Petrakos, *Charles

* Those who served in World War II.

Alumni continued

CLASS OF 1936 continued:

Poindexter, *William Poindexter, *Charles Richard Quinn, *Bernard J. Rousch, Dorris B. Schmidt, *Judson Alvin Schmidt, Delores Lee Tewell, Rose Marie Tice, Mary Alice Torrance, Betty Virginia Vincent, *Maurice T. Wolf.

CLASS OF 1937:

Betty Jean Harris, Mary Eleanor Taylor, Lucy Mildred Holt, Martha Badger, Louise Roberta Thomas, Olive Frances Thomas, Norma June Turner, Mildred Elizabeth Phillips, Catherine Velma Stoner, *Irwin H. Anderson, *George K. Black, Dennis W. Breidzbach, Marietta Cole, *Marion Carlisle Derossett, Horace Farley, *Charles M. Feider, *Robert B. Finch, Dorothy F. Gold, Thelma L. Greene, *Daily Francis Hill, June Hugelback, Lloyd V. Imel, *George W. Kalb, *Roger F. King, Helen Kathryn Klein, *Charles J. Lawson, Ruby Catherine Lusby, *Wilbert R. McCauley, Adaline Evelyn McLaughlin, *Donald J. Mutter, *William H. Niese, Mary Thelma Perkinson, Mary Kathriene Raiser, *John F. Schoenstein, Arzetta Clara Sieferman, *Herbert Ray Turner, Ann Kathryn Wells *E. Clayton Wheeler, Mary Elizabeth Wolfe, *Richard J. Zepf, *William C. Zopf.

CLASS OF 1938:

Jean Maureen Montgomery, *Martha Jane Server, *George Denny Hughes, Jessie M. Coppage, Lillian Helen Douglass, Mary Gladys Tingle, William A. Lyon, Dorothy Joan Vincent, *Robert Bethea, Jr., Mary Aveline Schumacher, Dorothy J. Grebe, *William K. Black, Wilhelmina Burris, *Kenneth R. Giesler, Ruth Carolyn Hancock, *Herman Edward Hoffman, Gladys M. Hugelback, Elmer R. Jones, *Charles Phillip Kasper, Jeanne Elizabeth Penn, Martha Ellen Keelty, Morris Kidwell, *Thomas Grover Klein, Roberta K. Langsdale, *Earle M. Lewis, *Kenneth G. McKay, Mary Elizabeth Major, Jack T. Matthews, William Paul Meyers, Anna Martha Mundt, Catherine Petrakos, Christina Petrakos, Drusilla L. Poindexter, Ralph M. Pratt, Jr., Mary Kathryn Quinn, *John T. Reed, Polly Saltgaber, *James Edward Schafer, *Bonnie Shuck, *Clarence Nichols Scott, Rita E. Sheets, William D. Simmons, *Shepherd E. Stivers, Jr., Emily Jane Thacker, Russel F. Thomas, Martha Jean Uebele, Robert N. Wilson.

CLASS OF 1939:

E. Delbert Schneider, Robert W. Hodgers, Betty Jean Forthofer, Louise Ryker, Bernadette Cavidy, *Wm. Kenneth Stutsman, *Ralph E. Knoebel, Joseph J. Hoffman, *Jack H. Gans, Louis Hill, Jr., Mary Eunice Muncie, Jean Pauline Thomas, Audrey Irene Armstrong, *Alfred Leonard Baglan, Eunice M. Bentz, *Gail Robert Burchfield, Norma J. Burris, *Richard V. Chatham, Thelma Fern Cheatham, William Paul Cole, Norma Ruth Cole, Evelyn J. Eaglin, Janet E. Friedersdorf, *Verle V. Giesler, *William Marion Gray, *Charles E. Harrod, R. Dale Harrod, *Paul Hill, *Albert Hoagland, *Richard Holsclaw, Anna Kathryn Kasper, *Jephtha Kimmel, Margaret Ruth Klein, *John K. Layton, Mary Gene Lemen, Maxine L. Long, *Walter Mundt, *John Melvin Neal, Norma E. Niese, *Robert J. Perry, Aletha Mae Robinson, *Kenneth Sauer, Stella G. Smith, Glenna Frances Stoner, *Patrick Albert Toomey, *William O. Weaver.

CLASS OF 1940:

Dorothea Mae Baumgartel, *William L. Bentz, Virginia Brooks, *Louis H. Cowan, *John L. Cundy, *Elmer Dahlem, *Thomas B. Demaree, *Robert Howard Douglass, *Jack M. Eaglin, Rosemary Evans, Virginia Grebe, *Walter E. Griffin, Wanda Marie Hand, Susan Beebe Harper, *Benjamin H. Hassfunder, John M. Jenkins, Mildred J. Kahn, *George R. Knoebel, Joe Langsdale, *Lynn R. Layton, *William Thomas Lockridge, Louise Loretta Lusby, Virginiaanna Matthews, *Dale Melton, Pauline Messmore, Wynona Jean Perkinson, Mary Poindexter, Doris Mae Ricketts, Dorothy Rogers, Gertrude Ethel Rusk, *Connor Kyle Saltn, Jr., Mary Catherine Scherer, Catherine R. Schmidt, *William F. Semon, Dave M. Smith, Lena Mae Stanton, Wilma C. Stephanus, *Paul Conrad Storm, *Raymond E. Turner, Ruth Alberta Webster, Vera Lee Lawton, Opal Laverne Bellamy, *Howard F. Richards, Frieda Mae Burkhardt, *James Richard Geyer, Kathryn Marie Born, Ilva Josephine Kelley, *Eugene David Spivey, James Robert Firth, Helen Catherine Wolf, Bette Black, Lena Kathryn Graham, Geraldine Pless, Lloyd Merle Miller, Marianna Cole.

* Those who served in World War II.

Alumni continued

CLASS OF 1941:

Mildred Ann Bersch, *H. Brooklyn Cull, *Clyde A. Wallace, Betty Ann Grooms, Norma L. Sautley, Mary Bernice Giesler, *A. Louis DeCar, Jr., *James C. Eckert, Mary Alice Bock, Jean Carolyn Faught, Sara Virginia Hill, Doris Lucille Baker, Rena Madelene Mundt, Opal Margaret Barber, Betty Jane Chadwick, George E. Hylcord, *Elbert Richard Turner, *Donald A. Roell, Dorothy Ann Abernethy, Edith Adams, *Evertson R. Ashby, *Albert V. Banta, *Albert C. Barrett, Leana LaVerne Bentz, *Robert John Claffin, *Mose Cochrane, *Chris Cranford, Catherine Arlene Curtis, Mary Elizabeth Doores, *G. Frank Dunn, Jr., *William F. Evans, Frederick W. Feider, *George J. Feider, Loretta L. Grimes, *Rowan E. Guthrie, *Charles Everett Hamilton, Elvin E. Holt, Vera Jean Howe, *Wilbur G. Imel, Marjorie Jeanette Jenkins, *William D. Johann, Doris M. Lane, Christine D. Langsdale, *Glenn H. Lawson, *Howard E. Layton, Emily McLaughlin, *Charles F. Peddie, *Donald Roy Server, Janet Mae Sheets, *Edwin R. Strickland, *Russell Keith Vawter, George F. Walters, *Gerald Kroot Weinberg, *Robert A. Willick.

CLASS OF 1942:

*John C. Wilson, Virginia Louise Baglan, Elizabeth Johnson Lyon, *Paul D. Needler, Mary Jane Reed, *Rogers Clark Walker, *John Paul Foxworthy, Mildred Inez Hunt, Lawrence N. Gordon, *Dana C. Winn, *Jack K. Coppage, Frances Clarkson, Alice M. Alcorn, *Wayne Swope Montgomery, Mary Alice Mayfield, Mary Margaret Geyman, *John B. Armstrong, *William Bellamy, *John Graham Bock, Wilma Born, *Gene Cheatham, Jary Jane Corbin, Lucille Curtis, Patricia Ann Davis, Betty Jean Delzell, Rosemary Dipper, George E. Distel, Jr., *Forrest E. Douglais, Rosemary Louise Faught, Ruth E. Gibson, Phyllis Jean Gwinn, *Keith Hand, Jannie Mae Handlon, *Calvin B. Hasfurd, *Richard Tevis Heck, Robert C. Hughes, June Hulett, Martha Jane Kalb, *Edward L. Klopp, *William L. Lodge, Betty Ann Lowe, Bonnie Lou Lowry, Alice Opal Lynch, *Markt Andrew Lytle, *Lavon McClure, Donald Lander McKenna, *Charles F. McNimery, George A. McLaughlin, *Fred D. Norris, Charles Elbert Osborn, *Louis David Owens, Richard Lee Pryor, Merle H. Richardson, Margie H. Ryker, *Arthur Schafer, Norma Joan Scherer, *Norman Logan Smith, *William Irvin Stoner, Audrey J. Thomas, *Francis Jos. Toomey, Jr., Selma Kathryn Turner, Elizabeth Vaughn, *Gilbert G. Winkel, *Raymond Charles Wolf.

CLASS OF 1943:

Helen Elizabeth Geyer, Nancy Saunders Ross, Evelyn Jean Wilson, Doris L. Kremer, *Thomas A. McKay, Florence Irene Carson, Dora Grace Ricketts, Janet Louise McNimery, Mary Jane Hertz, *J. Brinton Thomas, Norma A. Cull, Norma Jean Jenkins, Wilma Jean Conway, Agnes E. Sample, Betty Jean Hartman, Mary Louise Eisenhardt, Lillian Edna Sachleben, Mary Elizabeth Ashby, *Leo Eugene Graves, Marie La Arbuckle, *James H. Bayne, *Horace A. Black, Thelma Burnham, Jeannette Lee Cooley, Ina Lee Corn, *John Robert Easton, Hazel M. Ely, Jeannette A. Gans, *Francis E. Gaines, Edna Ernestine Giltner, *John S. Glone, *Gerald Lee Gooden, Mary E. Harr, Nancy Jean Heck, Charles F. Hill, *Matthew J. Huffman, Jr., *Robert C. Horton, *William Lynn Horton, Bettie Marie Johann, *Paul E. Jones, *William Robert Klein, Charles L. Lantz, *Albert M. Layton, Virginia Lee Long, Edna Ruth Martin, Martha M. Mefford, *Richard M. Miller, *Emery Teaford Muncie, *Richard Edward Neal, *Louis T. O'Neal, Betty Jeanne Price, *Graham Robinson, Anna Margaret Romans, Frank William Rusk, *William Robert Standerford, *Andrew Miller Taff, *Dale Bates Taylor, Betty Jo Ann Turner, *William Howard Wilson.

CLASS OF 1944:

Mary Muffett Inglis, Sarah M. Bethua, Betty Jean Hargis, Mary Lizabeth Hughes, *Rolla Mae Owens, Analee Plew, Ethel M. Bennett, Suzanne Thomas, Mary Nash Ross, Jessie Sailor, Margaret Scott Jeanne A. Bechhold, Mary Ann Bear, James Henry Berach, Norma Ruth Bladen, Norma Jean Brook, Louis Denny Chowning, William Wesley Corbin, *William Edwin Cranford, Mary Janice Curtis, *John E. Dagleish, *Robert Charles Dierkes, Ella Jean Evans, *John William Feuerstin, Helen Louise Goins, Norma Bess Gray, *William J. Guthrie, *Robert William Guina, Martha Lucille Gwinn, *Leslie Samuel Hayes, Joan Ruth Holsclaw, Mildred Hughes, *Charles S. Humphrey, *Vincent Coleman Janes, *A. Ray-

* Those who served in World War II.

Alumni continued

CLASS OF 1944 continued:

mond Jessup, Jr., *Herman Joseph Kasper, Mary Elizabeth Kasper, Jean Hope Klopp, M. Helen Long,
*Charles E. Maddox, *Nathan E. Mayfield, *J. Lynn Moore, Roberta Anne Newman, Betty Kathryn
Oakley, James Brandt O'Neal, Mary Gladys Petrakos, *William Howard Robinson, *Paul Kenneth Reed,
Margaret E. Roll, Betty Jane Rothhaas, Patricia Ann Siefertman, Ada Hyacinth Tewell, Marjorie Anne
Thacker, Janet C. Tharp, Jean Wallace, *Bob Wallace, *Robert A. Zimmerman.

CLASS OF 1945:

Corinne L. Lyon, *William Ralph Pfister, Katherine Ann Hughes, M. Janet Cofield, Helen Marie
Gans, Helen Frances Ricketts, Mary Margaret Mills, Zona Lee Kloepfer, Myrtle Louise Shipley, Anna
Belle Manaugh, Dorothy Lucille Born, Theodore William Wilkins, *Tommy Joe Conpage, Mary Margaret
Scott, Eleanor Evans, *William N. Butler, Jean Kingsley Greiner, Loleta Maxine Mason, George Powell
Alexander, Mary Ellen Bailey, *James Edward Bellamy, *Charles E. Bennett, *John Fredrick Burkhardt,
Jr., *Arthur T. Cain, Ann Eaglin, Norma Lynn Faught, Mabel Ruth Goins, Phyllis Esther Harlow,
*Everett T. Harrell, Norma Jean Hassfurther, Virginia Mae Helton, Catherine A. Hill, Patricia G. Hill,
*Clement G. Hoffman, William Glenford Horine, *Richard J. Irwin, George A. Jones, Vera Mae Jones,
Richard A. Klein, Sondley A. Littrell, Morris Lockridge, Dale Murphy, Jr., Ida Mae Niesse, Freda C.
Parker, Paul Kirby Peddie, Anna Mae Phagan, Elizabeth W. Potter, *Ronald Marshall Potter, Winifred
R. Robinson, William E. Sauley, *Carl R. Schnebelt, Jessie Lucille Seigel, Norma Blanche Siefertman,
*Robert E. Smith, *Merrill L. Stephanus, Mary Evelyn Waas, Helena Faye Winn.

* Those who served in World War II.

. . . *Autographs* . . .

